

FUJIFILM
Value from Innovation

SHOOT, REWIND, PRINT

instax SQUARE SQ20

HYBRID INSTANT CAMERA



Time is a series of moments. Now you can crop and shape your favorites.

The instax SQUARE SQ20 allows you to creatively showcase the beauty of moving subjects.

Whether you're capturing that exciting moment or a thrilling adventure the instax SQ20 allows you to enjoy photography and instant prints like never before.

Actual size (instax SQUARE 86x72mm)



FRAME GRAB

Shoot a video up to 15 seconds long and select the frame that captures the best moment. Capturing a moving subject has never been so easy.



TIMESHIFT COLLAGE

One press of the shutter shoots four photos in a time shift sequence to capture the motion of a moving subject.



SPECIAL FILTERS "SEQUENCE"

Showcases the motion of the subject in an image to create a sense of action.

HYBRID INSTANT CAMERA

- Uses the highly popular instax SQUARE format
- Create and print new image compositions with the built in crop tool
- Enjoy editing photos with a variety of filters

instax
SQUARE
SQ20

HYBRID INSTANT CAMERA
[INSTANT PRINT + DIGITAL TECHNOLOGIES]



MATTE BLACK



BEIGE



FRAME GRAB

Shoot a video up to 15 seconds long, use the dial on the back of the camera to select the frame that captures the best moment and print your photo. Capturing a moving subject has never been so easy.



Capturing your favorite moment is easy - just turn the dial on the back!



SHOOTING MODE

A variety of modes to widen the range of creativity in your photos.

TIMESHIFT COLLAGE

One press of the shutter shoots four photos in a time shift sequence to capture the motion of a moving subject. The time between frames can be adjusted in increments of 0.2 seconds, with a maximum of 2.0 seconds between frames.



DOUBLE EXPOSURE

Two shutters go off and the two pictures are combined into one image.



BULB MODE

A variety of modes to widen the range of creativity in your photos.



SPLIT

Choose two layouts from a two-pane, three-pane, four-pane and nine-pane arrangement. Each pane shows a photo that you have taken.



COLLAGE

Select the collage layout of your choice and capture photos for each frame to create a collage photo.



ADJUSTING / PROCESSING IMAGES (EFFECT)

Enjoy editing and processing with a variety of filters that can be applied while shooting or viewing photos.

Still picture

Movie shooting

FILTERS (Still picture & Movie shooting)



Cornelius



Monochrome



Luna



Immerse



Amber



Marmalade



Martini



Sepia



Roppongi



Highline



Nostalgic



Skin Brightening

FILTERS (Still picture only)

FILTERS : PARTIAL COLOR (Still picture & Movie shooting)



Red



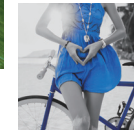
Orange



Yellow



Green



Blue



Purple

BRIGHTNESS CONTROL



-1 2/3



0



+1 2/3

FILTERS (Movie shooting only)



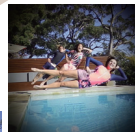
Sequence



Retro



Film Frame



MAX



0



MIN

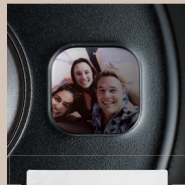
VIGNETTE CONTROL



* A part of images is for illustration purposes.

SELFIE MIRROR

A mirror is included next to the lens to ensure the perfect selfie every time.



ZOOM

The SQ20 is the first camera in the instax series to include a digital zoom function. The digital zoom allows you to zoom up to 4x to adjust your view.



OTHER FEATURES

- The internal memory holds around 50 still images. More can be saved by using a Micro SD card.
- Reprinting allows the last 50 photos to be printed from the print history.
- Index prints can be created with a four-frame or nine-frame layout.
- Comes with a built-in rechargeable battery.

SPECIFICATIONS

Image sensor	1/5-in., CMOS with primary color filter
Effective pixels	1920 x 1920
Storage media	Built-in memory, microSD/microSDHC memory card
Recording capacity (still picture)	Built-in memory: Approx. 50 files (still picture), Approx. 30 seconds(movie) microSD/microSDHC memory card: Approx. 1000 files per 1 gigabyte
Recording capacity (movie)	microSD/microSDHC memory card: Approx. 3 minutes (total) per 1 gigabyte
File system	Still picture: Compliant with Design Rule for Camera File System (DCF), Exif Ver.2.3, Compliant with JPEG and PIM Movie: 800 x 800 x 15 fps, H.264 (No sound can be recorded.)
Focal length	Fixed as 33.4 mm (35-mm format equivalent)
Aperture	F2.4
Auto focus system	Single AF (Contrast-detect TTL, equipped with AF illuminator) Continuous AF (Only for movie shooting)
Focus range	10 cm/3.9 in. to ∞
Shutter speed	1/7500 sec. to 1/2 sec. (Auto), maximum 10 sec. in Bulb mode
Sensitivity	ISO 100 to 1600 (Auto)
Exposure control	Programmed AE
Exposure compensation	-2.0 EV to +2.0 EV in increments of 1/3 EV
Metering	256-segment through the lens (TTL) metering, Multi metering
White balance	Auto
Flash	Auto/Compulsory flash/Suppressed flash Effective range: Approx. 50 cm to 8 m/1.6 ft. to 26.2 ft.
Shooting mode	Standard, Double exposure, Bulb mode, Split, Collage, Time Shift Collage
Self-timer	Approx. 10 sec./Approx. 2 sec.
Image effect	21 Filters (18 for still picture, 3 for movie shooting only), Brightness adjustment, Vignette
Playback function	Trimming, Multi image playback

Film	FUJIFILM Instant Film "instax SQUARE" (Purchased separately)
Photo capacity	10 prints/pack
Film size	86 mm x 72 mm/3.4 in. x 2.8 in.
Image size	62 mm x 62 mm/2.4 in. x 2.4 in.
Supported image size	800 x 800 dots
Printing solution	12.5 dots/mm (318 dpi, 80 μm dot pitch)
Printing levels	256 levels per color (RGB)
Supported image format	JPEG (Some images saved with a photo editing/processing software may not be displayed or printed.) JPEG files captured from a movie file can be printed.
Printing time	Approx. 12 seconds
Print timing	Printing shortly after shooting/Printing after selecting image
Printing function	Images on built-in memory/micro SD card
Reprint	Printable up to the past 50 prints (Up to 50 images stored in print history)
Digital zoom	Up to 4 X in shooting/printing
LCD monitor	2.7-in. (6.9 cm) TFT color LCD monitor, Pixels: Approx. 230k-dots
External interface	Micro USB Micro-B (For charging/file copying)
Power supply	Li-ion battery (Built-in, Cannot be removed.)
Charging function	Built-in
Printing capacity	Approx. 100 prints (From when the battery is charged fully) *Varies depending on the conditions of use.
Charging time	Approx. 2 to 3 hours (Using 0.5 A USB port) *Varies depending on air temperature.
Dimension	119 mm x 50 mm x 127 mm/4.7 in. x 2 in. x 5 in. (W x D x H)
Weight	390 g/13.8 oz. (excluding film pack and memory card) 440 g/15.5 oz. (including film pack and memory card)
Operating environment	Temperature: 5 °C (41 °F) to 40 °C (104 °F) Humidity: 20% to 80% (no condensation)

* Specifications above are subject to change for improvement.

INSTANT FILM

instax SQUARE

Film size : 86 mm x 72 mm
Image size : 62 mm x 62 mm

WHITE Frame

- 10 Sheets x 1 Pack
- 10 Sheets x 2Packs



BLACK Frame

- 10 Sheets x 1 Pack



instax.com

FUJIFILM

FUJIFILM Corporation

7-3, AKASAKA 9-CHOME, MINATO-KU,
TOKYO 107-0052, JAPAN