

SYMBOL LS2208

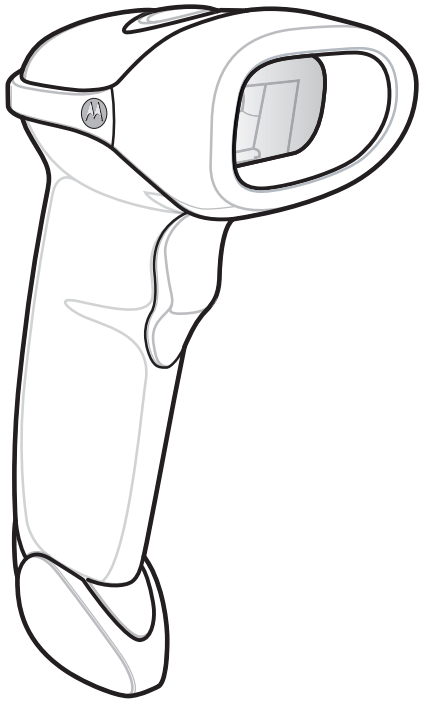


Quick Start Guide

STEP 1 - ATTACH CABLE TO SCANNER

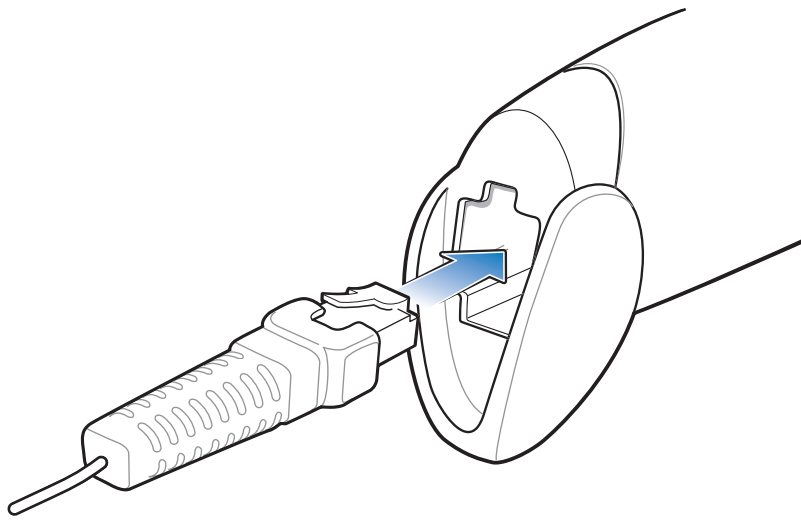
<http://www.motorola.com/ls2208>

POST IN WORK AREA

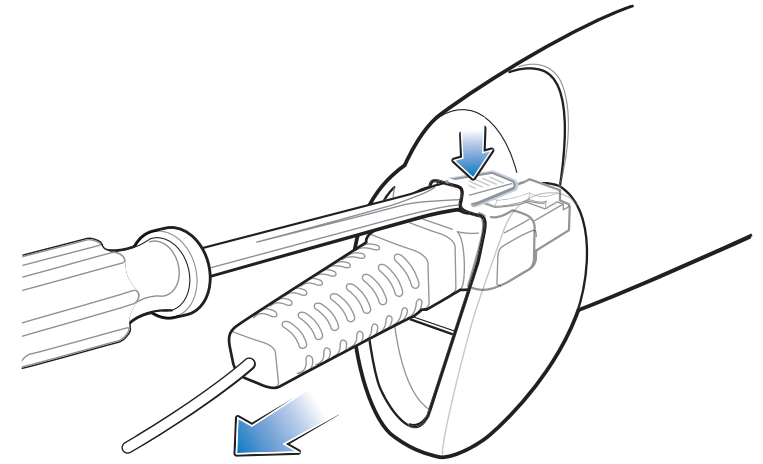


See Product Reference Guide for detailed information

Attach Cable



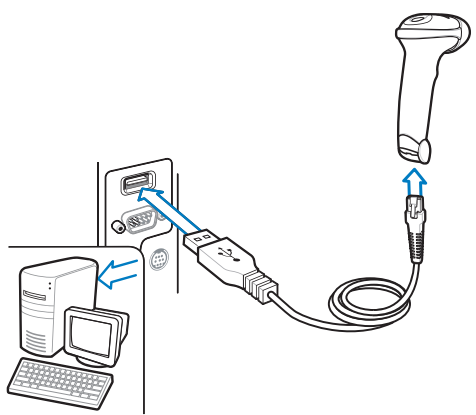
Remove Cable (to change interface)



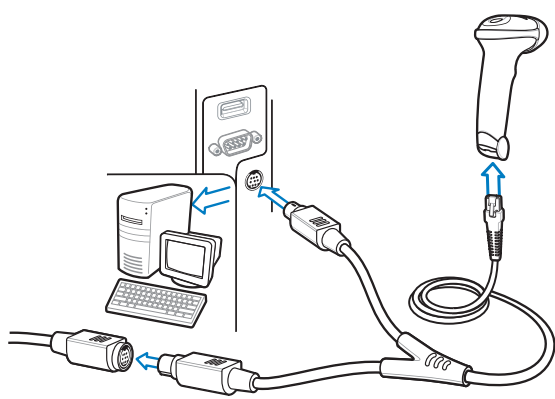
STEP 2 -CONNECT CABLE TO A HOST

NOTE: Cables may vary depending on configuration.

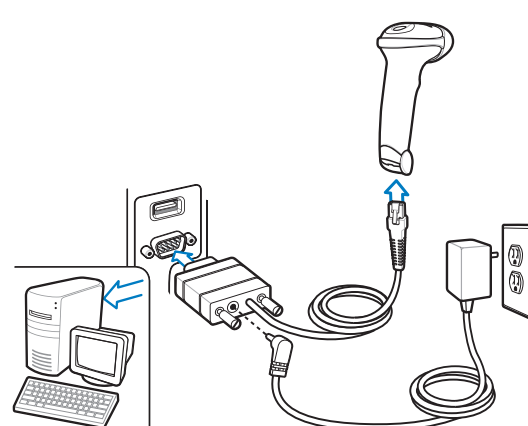
USB



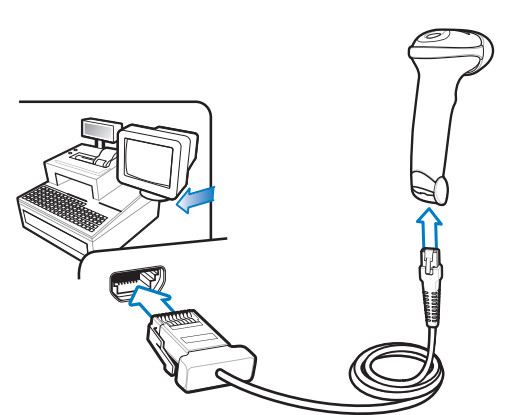
Keyboard Wedge



RS-232



IBM 46XX



STEP 3 - SET UP INTERFACE (Scan Host Bar Codes)

Important: Out of box, Keyboard Wedge and USB interfaces require no bar code scan setup. Bar codes are provided for complex programming or interface changes.

USB

Scan **ONE** of the bar codes below



IBM HAND-HELD USB



HID KEYBOARD EMULATION

Keyboard Wedge

Scan **ONE** of the bar codes below



IBM AT Notebook



IBM PC/AT and IBM PC COMPATIBLE

RS-232

Scan **ONE** of the bar codes below



OPOS/JPOS



STANDARD RS-232

IBM 46XX

Scan **ONE** of the bar codes below



PORT 5B



PORT 9B

ADD AN ENTER KEY (CARRIAGE RETURN/LINE FEED)

To add an **ENTER** key after scanned data, scan all **THREE** bar codes below in numerical order.

1



SCAN OPTIONS

2



<DATA>-<SUFFIX>

3



ENTER

ADD A TAB KEY

To add a **Tab** key after scanned data, scan all **THREE** Enter key bar codes above in numerical order then scan all **FIVE** bar codes below in numerical order.

1



SCAN SUFFIX

2



7

3



0

4



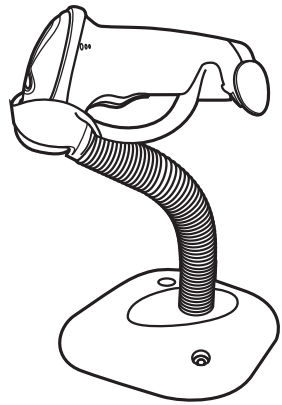
0

5



9

HANDS FREE STAND



SET DEFAULTS



SET DEFAULTS

OPTIMUM SCANNING



123SCAN²

123Scan² is an easy-to-use, PC-based software tool that enables rapid and easy customized setup via a bar code or USB cable. For more information, visit: <http://www.motorola.com/123Scan2>.

SCANNER INDICATIONS

LED Indications

- Off**: Scanner is on and ready to scan, or no power to scanner
- Green**: Bar code is successfully decoded
- Red**: Transmission error

Beeper Indications

- Standard Use**
- Low/medium/high beep**: Power up
 - Short medium beep**: Bar code decoded
 - 4 long low beeps**: Transmission error detected, data is ignored
- Parameter Menu Scanning**
- High/low/high/low beep**: Successful parameter setting
 - High/low beep**: Correct programming sequence performed
 - Low/High beep**: Incorrect programming sequence or 'Cancel' bar code scanned

Troubleshooting

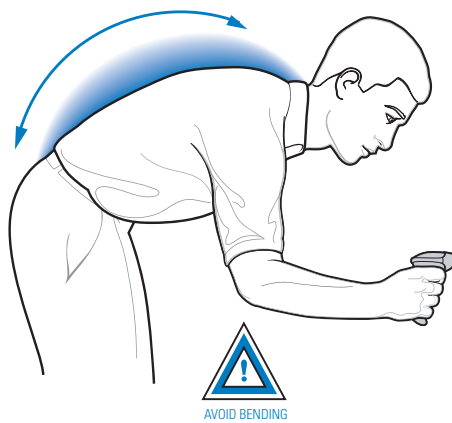
- Scanner not working**
- No power to scanner**: Check system power; ensure power supply, if required, is connected
 - Incorrect interface cable used**: Ensure that correct interface cable is used
 - Interface/power cables are loose**: Ensure all cable connections are secure
- Scanned data incorrectly displayed on host**
- Scanner not programmed for correct host interface**: Scan appropriate host parameter bar codes
- Scanner not decoding bar code**
- Scanner not programmed for bar code type**: Ensure scanner is programmed to read type of bar code being scanned
 - Bar code unreadable**: Ensure bar code not defaced; try scanning test bar code of same bar code type
 - Distance between scanner and bar code incorrect**: Move scanner closer to or further from bar code

RECOMMENDED USAGE GUIDE - OPTIMUM BODY POSTURE

Avoid Extreme Wrist Angles



Avoid Bending



Avoid Reaching



Ergonomic Recommendations

Caution: In order to avoid or minimize the potential risk of ergonomic injury follow the recommendations below. Consult with your local Health & Safety Manager to ensure that you are adhering to your company's safety programs to prevent employee injury.

- Reduce or eliminate repetitive motion
- Maintain a natural position
- Reduce or eliminate excessive force
- Keep objects that are used frequently within easy reach
- Perform tasks at correct heights
- Reduce or eliminate vibration
- Reduce or eliminate direct pressure
- Provide adjustable workstations
- Provide adequate clearance
- Provide a suitable working environment
- Improve work procedures.

REGULATORY INFORMATION

© MOTOROLA, INC. 2010 All rights reserved.

Motorola reserves the right to make changes to any product to improve reliability, function, or design. Motorola does not assume any product liability arising out of, or in connection with, the application or use of any product, circuit, or application described herein. No license is granted, either expressly or by implication, estoppel, or otherwise under any patent right or patent, covering or relating to any combination, system, apparatus, machine, material, method, or process in which Motorola products might be used. An implied license exists only for equipment, circuits, and subsystems contained in Motorola products.

Power Supply
Note: Use only a Symbol-approved power supply (p/n 50-14000-253R, 50-14000-256R, 50-14000-257R, 50-14000-258R or 50-14000-259R) output rated 5 VDC and minimum 650mA. The power supply is certified to EN60950 with SELV outputs. Use of alternative power supply will invalidate any approval given to this device and may be dangerous. Hinweis: Benutzen Sie nur eine von Symbol Technologies genehmigte Stromversorgung mit einer Ausgangsleistung von 5 VDC (Gleichstrom) und mindestens 650mA. Die Stromversorgung ist nach EN60950 für die Verwendung in SELV-Stromkreisen zertifiziert. Bei Verwendung eines anderen Netzzeugs werden alle für das Gerät gewährten Genehmigungen außer Kraft gesetzt, und der Betrieb kann gefährlich sein.

Warranty
For the complete Motorola hardware product warranty statement, go to: <http://www.motorola.com/enterprisemobility/warranty>

Service Information
If you have a problem using the equipment, contact your facility's Technical or Systems Support. If there is a problem with the equipment, they will contact the Motorola Enterprise Mobility Support at: <http://www.motorola.com/enterprisemobility/contactsupport>

For the latest version of this guide go to: <http://www.motorola.com/enterprisemobility/manuals>

Waste Electrical and Electronic Equipment (WEEE)

- English:** For EU Customers: All products at the end of their life must be returned to Motorola for recycling. For information on how to return product, please go to: <http://www.motorola.com/recycling/usa>
- Spanish:** En cumplimiento de la Ley 10/2013 de residuos y reciclaje, los productos de Motorola deben ser devueltos a Motorola para su reciclaje. Para obtener información sobre cómo devolver un producto, visite <http://www.motorola.com/recycling/usa>
- French:** Pour clients de l'Union Européenne: tous les produits doivent être retournés à Motorola à la fin de sa vie afin de pouvoir être recyclés. Si vous n'avez pas d'informations sur la façon de retourner un produit, visitez <http://www.motorola.com/recycling/usa>
- German:** Für Kunden innerhalb der EU: Alle Produkte müssen am Ende ihrer Lebensdauer zum Recycling an Motorola zurückgegeben werden. Informationen zur Rücksendung von Produkten finden Sie unter <http://www.motorola.com/recycling/usa>
- Italian:** Per clienti in Italia: tutti i prodotti che sono giunti al termine del rispettivo ciclo di vita devono essere restituiti a Motorola al fine di poter essere riciclati. Per informazioni sulla modalità di restituzione, visitate il seguente sito Web: <http://www.motorola.com/recycling/usa>
- Japanese:** ES 製品は、EU の顧客向けに、製品のライフサイクルの終了時に Motorola に返却する必要があります。製品の返却方法に関する詳細については、<http://www.motorola.com/recycling/usa> をご覧ください。
- Portuguese:** Para clientes da UE: todos os produtos no fim de vida devem ser devolvidos à Motorola para reciclagem. Para obter informações sobre como devolver o produto, visite <http://www.motorola.com/recycling/usa>
- Russian:** Для клиентов из ЕС: все продукты должны быть возвращены в Motorola по окончании срока службы. Для получения информации о том, как вернуть продукт, посетите сайт <http://www.motorola.com/recycling/usa>
- Ukrainian:** Для клієнтів з ЄС: всі продукти повинні бути повернуті в Motorola після закінчення терміну служби. Для отримання інформації про те, як повернути продукт, відвідайте веб-сайт <http://www.motorola.com/recycling/usa>

Laser Labels

In accordance with Clause 5, IEC 825 and EN60825, the following information is provided to the user:

ENGLISH	HEBREW	ITALIAN / ITALIANO	NORWEGIAN / NORSK	PORTUGUESE / PORTUGUÊS	SPANISH / ESPAÑOL	SWEDISH / SVENSKA	CHINESE / 简体中文	KOREAN / 한국어
CLASS 1	מסדר לייזר מסוג 1	CLASSE 1	KLASSE 1	CLASSE 1	CLASE 1	KLASS 1	1类	1등급 레이저 제품
CLASS 2	מסדר לייזר מסוג 2	CLASSE 2	KLASSE 2	CLASSE 2	CLASE 2	KLASS 2	2类	2등급 레이저 제품

Regulatory Information

Symbol Technologies, Inc., the Enterprise Mobility business of Motorola, Inc. ("Motorola"). All Symbol devices are designed to be compliant with rules and regulations in locations they are sold and will be labeled as required. Any changes or modifications to Symbol Technologies equipment, not expressly approved by Symbol Technologies, could void the user's authority to operate the equipment. Antenna's, use only the supplied or an approved replacement antenna. Unauthorized antennas, modifications, or attachments could cause damage and may violate regulations.

Laser Devices

The following statement is required to comply with US and international regulations: **Caution: Use of controls, adjustments or performance of procedures other than those specified herein may result in hazardous laser light exposure.**

Class 2 laser scanners use a low power, visible light diode. As with any very bright light source, such as the sun, the user should avoid staring directly into the light beam. Momentary exposure to a Class 2 laser is not known to be harmful.

Radio Frequency Interference Requirements

Note: This equipment has been tested and found to comply with the limits for a Class B digital device, pursuant to Part 15 of the FCC rules. These limits are designed to provide reasonable protection against harmful interference in residential installation. This equipment generates, uses and can radiate radio frequency energy and, if not installed and used in accordance with the instruction manual, may cause harmful interference to radio communications. However there is no guarantee that interference will not occur in a particular installation. If this equipment does cause harmful interference to radio or television reception, which can be determined by turning the equipment off and on, the user is encouraged to try to correct the interference by one or more of the following measures:

- Reorient or relocate the receiving antenna
- Increase the separation between the equipment and receiver
- Connect the equipment into an outlet on a circuit different from that to which the receiver is connected
- Consult the dealer or an experienced radio/TV technician for help.

Radio Frequency Interference Requirements – Canada

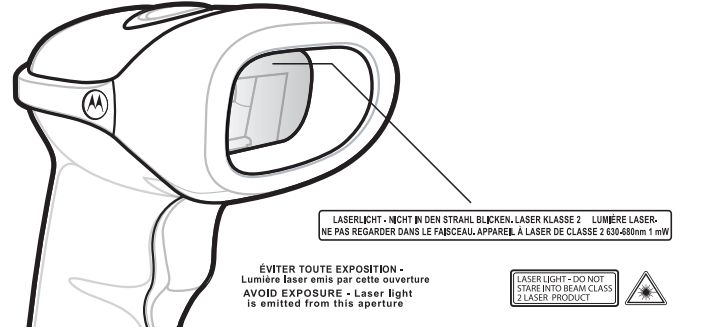
This Class B digital apparatus complies with Canadian ICES-003. Cet appareil numérique de la classe B est conforme à la norme NMB-003 du Canada.

Marking and European Economic Area (EEA)

Statement of Compliance
Symbol Technologies, Inc., hereby declares that this device is in compliance with all the applicable Directives, 89/336/EEC, 73/23/EEC. A Declaration of Conformity may be obtained from <http://www.motorola.com/enterprisemobility/doc>

Japan (VCCI) - Voluntary Control Council for Interference

この装置は、情報処理装置等電波障害自主規制協議会 (VCCI) の基準に基づくクラス B 情報技術装置です。この装置は、家庭環境で使用することを目的としていますが、この装置がラジオやテレビジョン受信機に近接して使用されると、受信障害を引き起こすことがあります。取扱説明書に従って正しい取り扱いをして下さい。 This is a Class B product based on the standard of the Voluntary Control Council for Interference from Information Technology Equipment (VCCI). If this is used near a radio or television receiver in a domestic environment, it may cause radio interference. Install and use the equipment according to the instruction manual.



MOTOROLA
Motorola, Inc. One Motorola Plaza, Holtsville, New York 11742-1300, USA
<http://www.motorola.com/enterprisemobility>

MOTOROLA and the Stylized M Logo and Symbol and the Symbol logo are registered in the U.S. Patent and Trademark Office. All other product or service names are the property of their respective owners. © Motorola, Inc. 2010

72-71882-01 Revision D March 2010

SYMBOL LS2208

<http://www.motorola.com/ls2208>