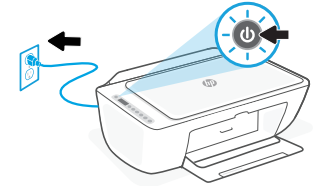
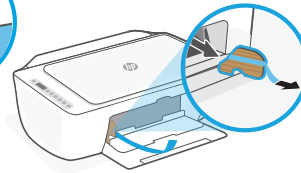
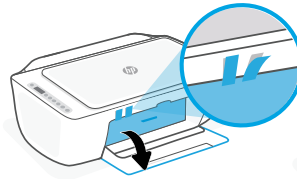
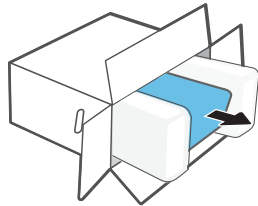




# Get Started | Démarrage | Empezar

# 1

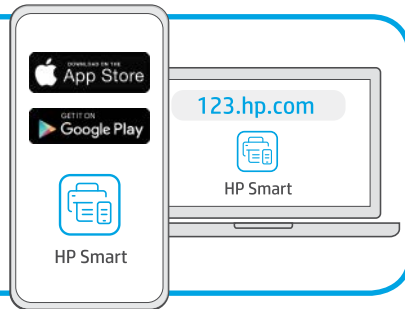


- EN** 1 Unpack the printer and remove the tape and cardboard. Plug in and turn on the printer.
- FR** 1 Déballez l'imprimante et retirez le ruban adhésif et le carton. Branchez et allumez l'imprimante.
- ES** 1 Desempaquete la impresora y retire la cinta y el cartón. Enchufe y encienda la impresora.

# 2

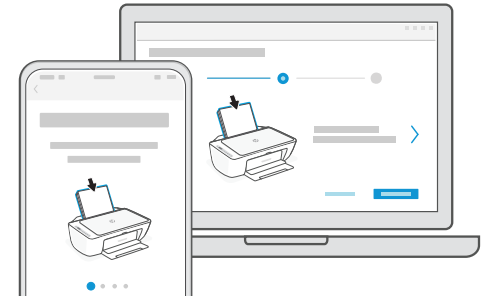


123.hp.com



- EN** 2 HP Smart app **required** for setup.
- FR** 2 Application HP Smart **requis** pour la configuration.
- ES** 2 Se **requiere** la aplicación HP Smart para la configuración.

# 3



- EN** 3 Follow the instructions in the app. It will guide you through setup.
- FR** 3 Suivez les instructions indiquées dans l'application. Elles vous guideront à travers la configuration.
- ES** 3 Siga las instrucciones de la aplicación, que le guiarán por la configuración.

Questions? | Des questions? | ¿Preguntas?

[hpsmart.com/dj2700](https://hpsmart.com/dj2700)



---

The Apple logo is a trademark of Apple Inc., registered in the U.S. and other countries.  
App Store is a service mark of Apple Inc.  
Android, Google Play, and the Google Play logo are trademarks of Google Inc.

Printed in China      Imprimé en Chine      Impreso en China

© Copyright 2020 HP Development Company, L.P.

EN FR ES



3XV17-90043