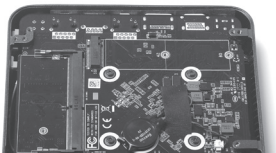
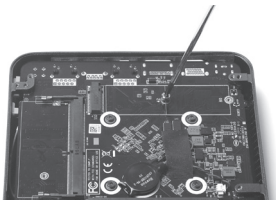




291-9B423-0100F

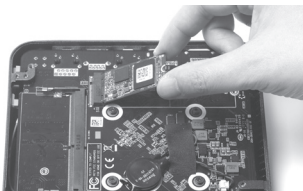
Installing M.2 SATA SSD 2242 / 2280 module

1. Locate the M.2 SSD slot and remove the screw.

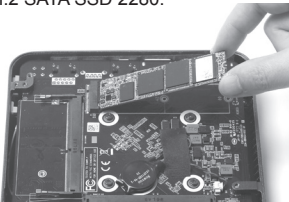


2. Insert an M.2 SATA SSD module into the slot at a 45 degree angle.

M.2 SATA SSD 2242:

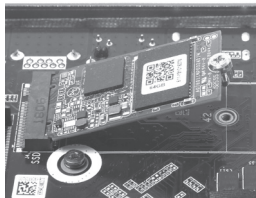


M.2 SATA SSD 2280:

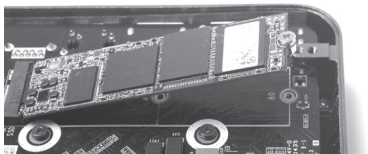


3. Attach the screw to the M.2 SATA SSD module as shown below.

M.2 SATA SSD 2242:

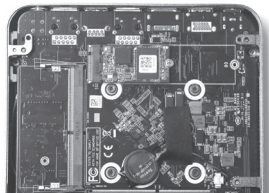
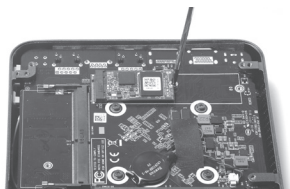


M.2 SATA SSD 2280:



4. Gently press down on the M.2 SATA SSD module, and install the screw on board.

M.2 SATA SSD 2242:



M.2 SATA SSD 2280:

