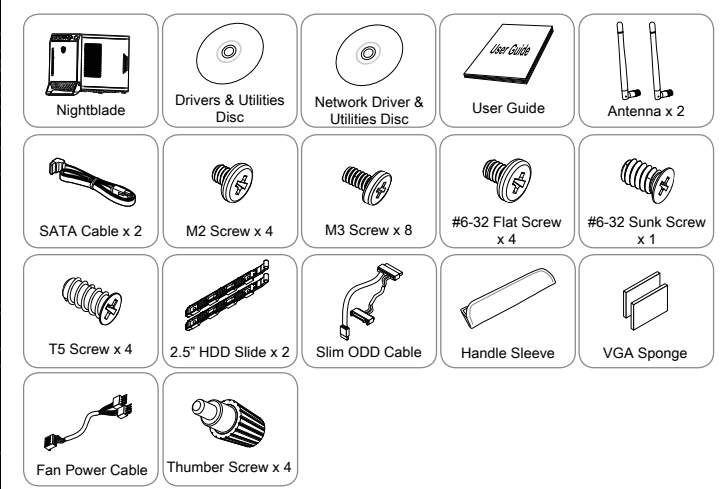
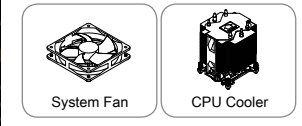


Packing Contents

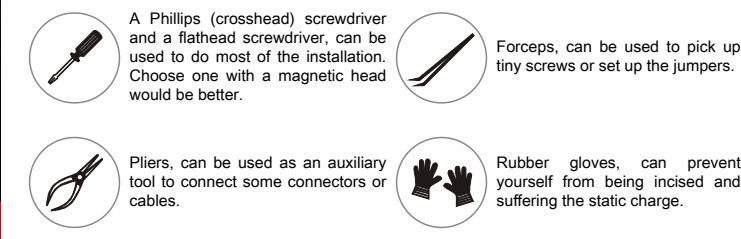


Optional Accessories



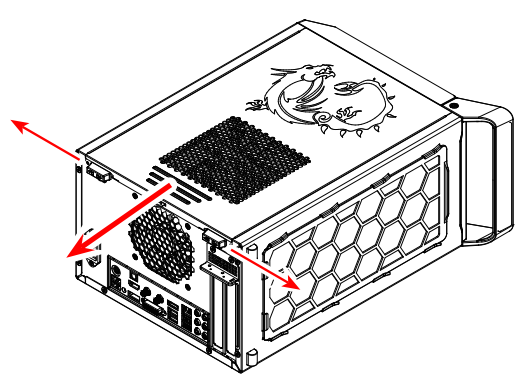
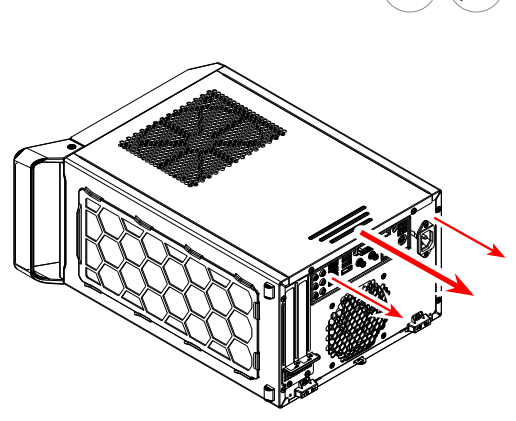
* These pictures are for reference only and may vary without notice.
 * The packing contents may vary according to the model you purchased.
 * If you need to purchase the optional accessories or request part numbers, please visit the MSI website at <http://www.msi.com/index.php> or consult the dealer.

Assembly Tools You Need



Opening the Chassis

開啟機箱
 开启机箱
 シャーシの開ける方
 케이스 열기
 Membuka Casing
 Mở thùng máy ra
 เปิดฝาตัวเครื่อง
 الكيسه فتح
 سىك كرن باز
 Abrir la torre
 Ouverture du chassis
 Gehäuse öffnen
 Открытие корпуса
 Aprire lo Chassis
 Kasayı açma
 Otevření skříně
 Nyissa ki a házat
 Otwieranie obudowy
 Abrindo gabinete
 Het chassis openen
 Otvorenie skrine
 Deschiderea carcasei
 Otvaranje kućišta
 Öppna Chassit
 Hvordan chassiset åbnes
 Kotelon avaaminen
 Äpne kabinettet
 Korpuse avamine
 Korpusa atvēršana
 Atidarymas Važiukoelė



Important
 These screws can be replaced by thumbscrews for easy chassis open and close.

OC Genie Button (Nightblade X2)

OC Genie button can help to gain the better performance while playing 3D games.

- Push the OC Genie button to activate the overclocking mode. The button LED will light.
- Push the OC Genie button again to deactivate the overclocking mode.



LED Light Button (Nightblade X2B)

Push the LED light button to turn on or off the LED on the bottom of the chassis.



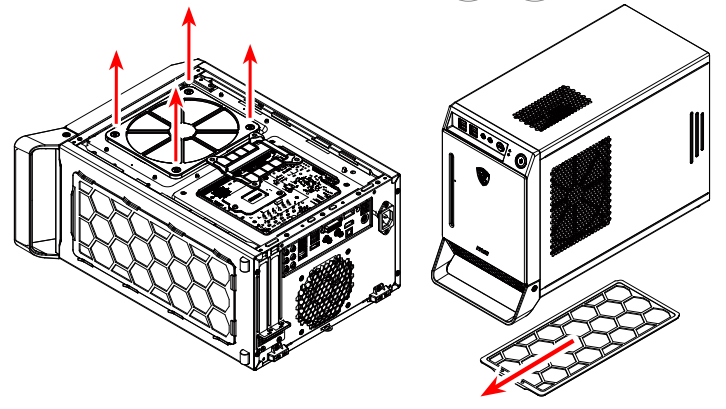
BIOS, Driver and Utility Updates

Visit the MSI website for technical guide, BIOS, driver and utility updates, and other information.

<http://www.msi.com/service/download/>
 Keyword: Nightblade X2 / Nightblade X2B



Cleaning the Dust Container



Important
 Regularly cleaning the dust container could keep the system well-ventilated. Clean the dust container with clean water and dry it before replacing it to the system.

Important
 These diagrams here are for reference only and may vary from the product you purchased. The CPU, CPU cooler, system fan, memory module, graphics card, and storage device showed in the installation drawing are optional.

Assembly Precautions

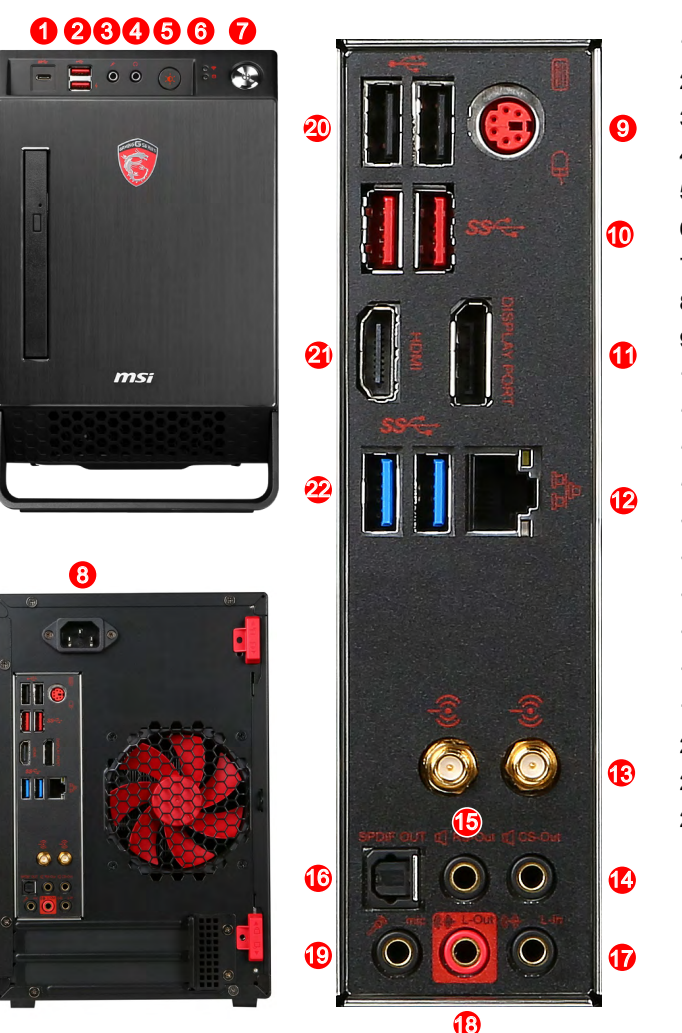
- The components included in this package are prone to damage from electrostatic discharge (ESD). Please adhere to the following instructions to ensure successful computer assembly.
- Always turn off the power supply and unplug the power cord from the power outlet before installing or removing any computer component.
- Ensure that all components are securely connected. Loose connections may cause the computer to not recognize a component or fail to start.
- It is recommended to wear an electrostatic discharge (ESD) wrist strap when handling the motherboard to prevent electrostatic damage. If an ESD wrist strap is not available, discharge yourself of static electricity by touching another metal object before handling the motherboard.
- Before turning on the computer, ensure that there are no loose screws or metal components on the motherboard or anywhere within the computer case.
- Do not use the computer in a high-temperature environment.
- Do not boot the computer before installation is completed. This could cause permanent damage to the components as well as injury to the user.
- If you need help during any installation step, please consult a certified computer technician.

Nightblade X2 Overview



- USB 3.0 Port (Type C)
- USB 2.0 Port/ Super Charger USB Port
- Microphone jack
- Line-Out jack
- OC button
- LED indicator
- System power button
- Power jack
- PS/2 Keyboard/Mouse combo port
- USB 3.0 port
- DisplayPort
- RJ-45 LAN port
- Antenna connector
- Center/ Subwoofer Out
- Rear Speaker Out
- Optical S/PDIF-Out
- Line-In/ Side Speaker Out
- Line-Out/ Front Speaker Out
- Mic In
- USB 2.0 port
- HDMI port
- USB 3.0 port
- USB 3.1 Port (Type C)

Nightblade X2B Overview



- USB 3.0 Port (Type C)
- USB 2.0 Port/ Super Charger USB Port
- Microphone jack
- Line-Out jack
- LED light button
- LED indicator
- System power button
- Power jack
- PS/2 Keyboard/Mouse combo port
- USB 3.0 port
- DisplayPort
- RJ-45 LAN port
- Antenna connector
- Center/ Subwoofer Out
- Rear Speaker Out
- Optical S/PDIF-Out
- Line-In/ Side Speaker Out
- Line-Out/ Front Speaker Out
- Mic In
- USB 2.0 port
- HDMI port
- USB 3.0 port

