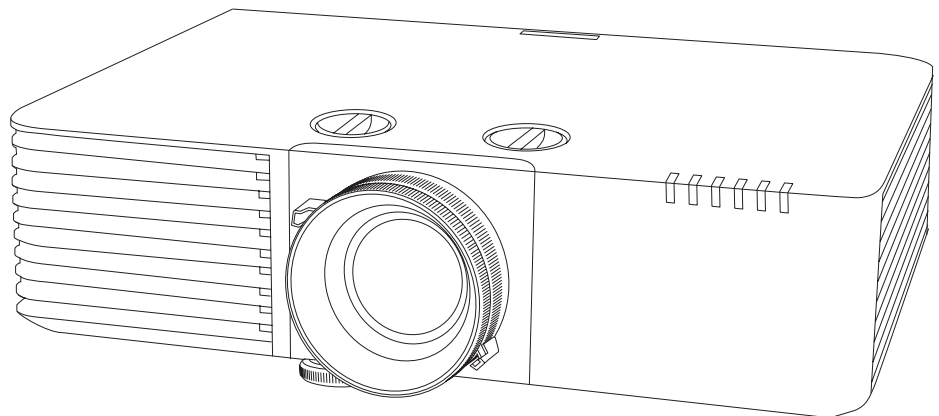


EB-L735U EB-L630SU
EB-L730U EB-L630U
EB-L720U EB-L530U
EB-L635SU EB-L520U

Specifications



Contents

■ Product Overview	3
■ Dimensions	8
■ Dimensions with Ceiling Mount (ELPMB22)	12
■ Dimensions with Ceiling Mount (Low profile) (ELPMB30)	21
■ Interface	24
■ Remote Control Operating Range (Wireless)	24
■ Screen Size and Projection Distance	25
■ Supported Resolutions Table	31
■ Installation Angle	33
■ Installation Environment	34
■ Monitoring and Control	35
■ Image Quality Maintenance	52
■ Cautions	52
■ Disclaimer	52

■ Product Overview

This projector comes with a variety of special features.

This manual explains the projector's technical specifications.

For details on how to use each feature, see the projector's "User's Guide".

EB-L735U/EB-L730U/EB-L720U/EB-L635SU/EB-L630SU

Product Specifications

Product name		EB-L735U EB-L730U	EB-L720U	EB-L635SU EB-L630SU
System		RGB liquid crystal shutter		
LCD panel	Size (diagonal)	0.67"		
	Resolution	2,304,000 pixels		
	Pixel number	(1,920 (W) × 1,200 (H) dots) × 3		
Projection lens	F value	1.5 - 1.7		1.7
	Zoom	Optics (1.0 - 1.6)		Digital (1.0 - 1.35)
	Focus	Manual		
Lens shift	System	Manual	-	Manual
	Range	Maximum vertical direction: Approx. ± 50% Maximum horizontal direction: Approx. ± 20%	-	Maximum vertical direction: Approx. ± 50% Maximum horizontal direction: Approx. ± 20%
Light source	Type	Laser diode		
	Output power (maximum)	115.5 W		
	Wavelength	449 to 461 nm		
	Life expectancy*1	Approx. 20,000 hours (Light Source Mode: Normal, Quiet) Approx. 30,000 hours (Light Source Mode: Extended)		
Brightness*2		7,000 lm (Light Source Mode: Normal) 4,900 lm (Light Source Mode: Quiet, Extended)		6,000 lm (Light Source Mode: Normal) 4,200 lm (Light Source Mode: Quiet, Extended)
Contrast ratio*2		Over 2,500,000:1 (Dynamic Contrast: Normal, High Speed)		
Color reproducibility		Maximum of 1,070 million colors		
Speaker		10 W (monaural)		
Scanning frequency	Analog	Horizontal: 15 - 92 kHz Vertical: 50 - 85 Hz		
	Digital	Horizontal: 15 - 135 kHz Vertical: 23.98/24/25/29.97/30/50/59.94/60 Hz		
Operating environment	Operating temperature*3	At an altitude of 0 to 2,286 m: 0 to +45°C (Humidity 20 to 80%, no condensation) At an altitude of 2,287 to 3,048 m: 0 to +40°C (Humidity 20 to 80%, no condensation)		
	Storage temperature	-10 to +60°C (Humidity 10 to 90%, no condensation)		
	Operating altitude	Altitude 0 to 3,048 m		
Power supply		100 - 240V AC ± 10% 50/60Hz 3.6 - 1.6 A		
Power consumption	Operating	100 to 120 V area	358 W (Light Source Mode: Normal, Custom) 267 W (Light Source Mode: Quiet, Extended)	
		220 to 240 V area	345 W (Light Source Mode: Normal, Custom) 258 W (Light Source Mode: Quiet, Extended)	
	Standing by	Communication On	2.0 W	
		Communication Off	0.3 W	
Dissipation BTU (maximum)	100 to 120 V area	1217.2 BTU/h		
Air flow (maximum)		95.0 CFM		

Product name		EB-L735U EB-L730U	EB-L720U	EB-L635SU EB-L630SU
Dimensions (W × H × D)		440 × 122 × 304 mm (not including raised section)		
		440 × 136 × 339 mm (including raised section)		440 × 136 × 334 mm (including raised section)
Mass	Projector	Approx. 8.4 kg	Approx. 7.8 kg	Approx. 8.4 kg
	Ceiling mount (ELPMB22)	Approx. 3.5 kg		
	Ceiling mount (Low profile) (ELPMB30)	Approx. 3.5 kg		
	Ceiling pipe 450 (450 mm) (ELPP13)	2.1 kg		
	Ceiling pipe 700 (700 mm) (ELPP14)	2.6 kg		
Noise level ^{*2}	Light Source Mode: Normal	38 dB	39 dB	38 dB
	Light Source Mode: Quiet	27 dB	27 dB	27 dB
Items supplied		Remote, 2 AA dry cell batteries (for remote control), power cord (approx. 3 m), cable cover ^{*4} , warranty card, User's Guide set		

- *1 Approximate time before the brightness of the light source is reduced by half.
(Assuming the projector is being used in an environment containing airborne particles of 0.04 to 0.2 mg/m³. This is an approximate guide only and may change depending on the projector's usage and surroundings.)
- *2 All average values for this product at time of shipping comply with the ISO 21118 international standards.
- *3 When the surrounding temperature rises, the brightness of the light source is automatically reduced.
(Approx. 40°C at an altitude of 0 to 2,286m and approx. 35°C at an altitude of 2,287 to 3,048 m although these will vary depending on the usage environment.)
- *4 Not included with the EB-L720U.

EB-L630U/EB-L530U/EB-L520U

Product Specifications

Product name		EB-L630U	EB-L530U	EB-L520U	
System		RGB liquid crystal shutter			
LCD panel	Size (diagonal)	0.67"			
	Resolution	2,304,000 pixels			
	Pixel number	(1,920 (W) × 1,200 (H) dots) × 3			
Projection lens	F value	1.5 - 1.7			
	Zoom	Optics (1.0 - 1.6)			
	Focus	Manual			
Lens shift	System	Manual		-	
	Range	Maximum vertical direction: Approx. ± 50% Maximum horizontal direction: Approx. ± 20%		-	
Light source	Type	Laser diode			
	Output power (maximum)	115.5 W	44 W × 2		
	Wavelength	449 to 461 nm			
	Life expectancy ¹	Approx. 20,000 hours (Light Source Mode: Normal, Quiet) Approx. 30,000 hours (Light Source Mode: Extended)			
Brightness ²		6,200 lm (Light Source Mode: Normal) 4,340 lm (Light Source Mode: Quiet, Extended)	5,200 lm (Light Source Mode: Normal) 3,640 lm (Light Source Mode: Quiet, Extended)		
Contrast ratio ²		Over 2,500,000:1 (Dynamic Contrast: Normal, High Speed)			
Color reproducibility		Maximum of 1,070 million colors			
Speaker		10 W (monaural)			
Scanning frequency	Analog	Horizontal: 15 - 92 kHz Vertical: 50 - 85 Hz			
	Digital	Horizontal: 15 - 135 kHz Vertical: 23.98/24/25/29.97/30/50/59.94/60 Hz			
Operating environment	Operating temperature ³	At an altitude of 0 to 2,286 m: 0 to +45°C (Humidity 20 to 80%, no condensation) At an altitude of 2,287 to 3,048 m: 0 to +40°C (Humidity 20 to 80%, no condensation)			
	Storage temperature	-10 to +60°C (Humidity 10 to 90%, no condensation)			
	Operating altitude	Altitude 0 to 3,048 m			
Power supply		100 - 240V AC ± 10% 50/60Hz 3.8 - 1.7 A	100 - 240V AC ± 10% 50/60Hz 3.1 - 1.4 A		
Power consumption	Operating	100 to 120 V area	358 W (Light Source Mode: Normal, Custom) 267 W (Light Source Mode: Quiet, Extended)	301 W (Light Source Mode: Normal, Custom) 232 W (Light Source Mode: Quiet, Extended)	
		220 to 240 V area	345 W (Light Source Mode: Normal, Custom) 258 W (Light Source Mode: Quiet, Extended)	293 W (Light Source Mode: Normal, Custom) 223 W (Light Source Mode: Quiet, Extended)	
	Standing by	Communication On	2.0 W		
		Communication Off	0.3 W		
Dissipation BTU (maximum)	100 to 120 V area	1217.2 BTU/h	1023.4 BTU/h		
Air flow (maximum)		95.0 CFM			
Dimensions (W × H × D)		440 × 122 × 304 mm (not including raised section)			
		440 × 136 × 339 mm (including raised section)			

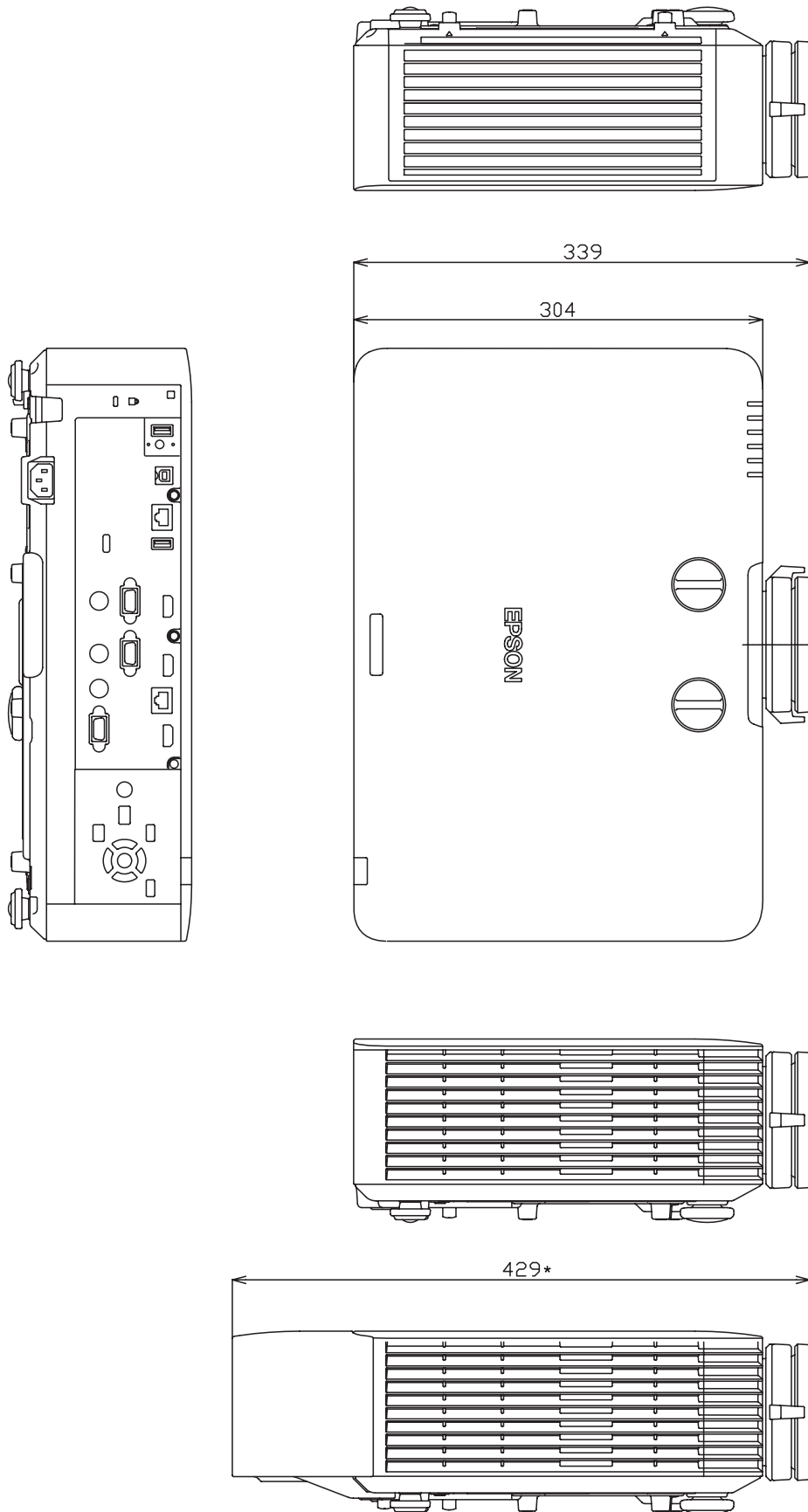
Product name		EB-L630U	EB-L530U	EB-L520U
Mass	Projector	Approx. 8.4 kg	Approx. 8.2 kg	Approx. 7.7 kg
	Ceiling mount (ELPMB22)	Approx. 3.5 kg		
	Ceiling mount (Low profile) (ELPMB30)	Approx. 3.5 kg		
	Ceiling pipe 450 (450 mm) (ELPP13)	2.1 kg		
	Ceiling pipe 700 (700 mm) (ELPP14)	2.6 kg		
Noise level ^{*2}	Light Source Mode: Normal	38 dB	31 dB	
	Light Source Mode: Quiet	27 dB	23 dB	
Items supplied		Remote, 2 AA dry cell batteries (for remote control), power cord (approx. 3 m), cable cover ^{*4} , warranty card, User's Guide set		

- *1 Approximate time before the brightness of the light source is reduced by half.
(Assuming the projector is being used in an environment containing airborne particles of 0.04 to 0.2 mg/m³. This is an approximate guide only and may change depending on the projector's usage and surroundings.)
- *2 All average values for this product at time of shipping comply with the ISO 21118 international standards.
- *3 When the surrounding temperature rises, the brightness of the light source is automatically reduced.
(Approx. 40°C at an altitude of 0 to 2,286m and approx. 35°C at an altitude of 2,287 to 3,048 m although these will vary depending on the usage environment.)
- *4 Not included with the EB-L520U.

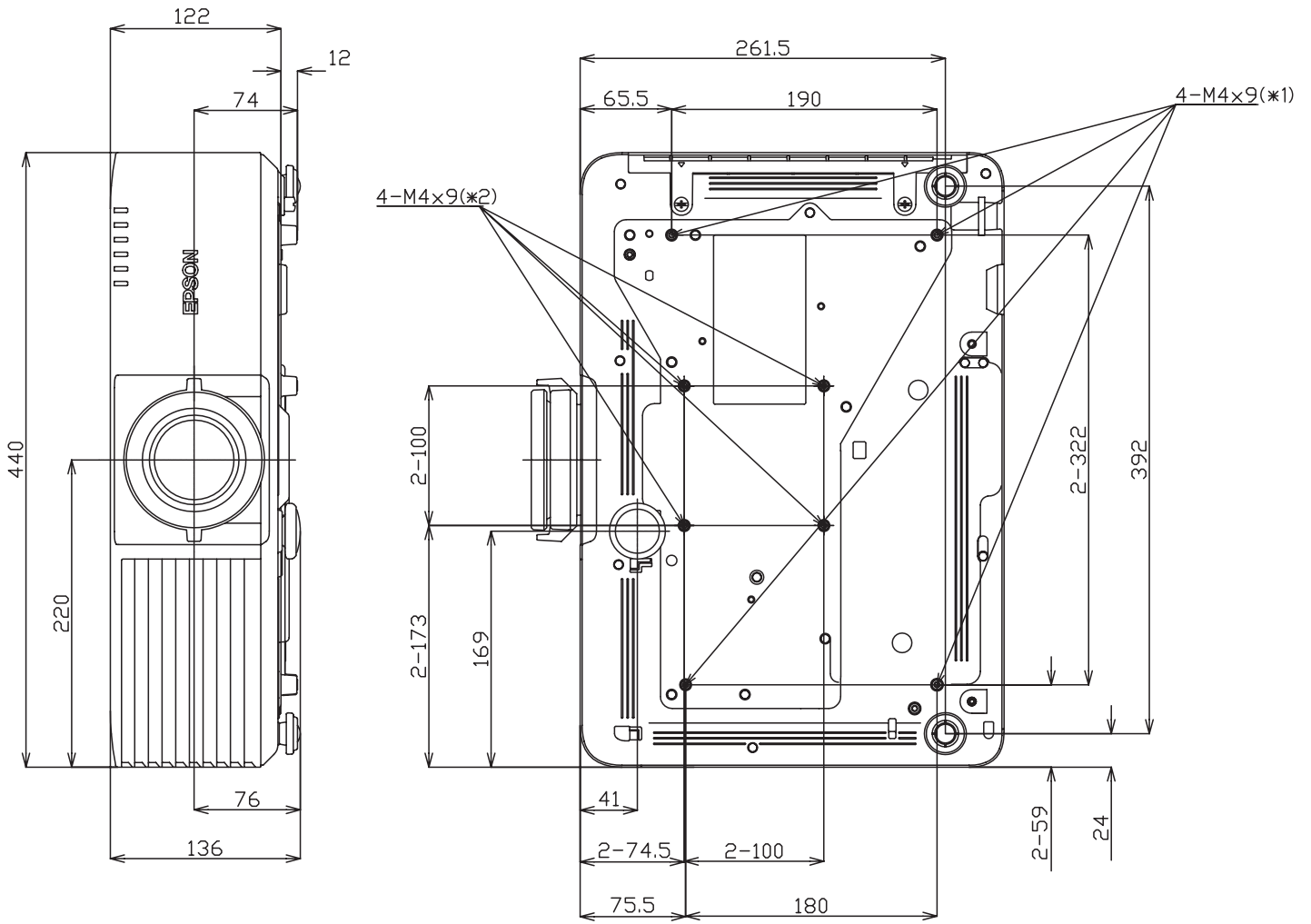
■ Dimensions

EB-L735U/EB-L730U/EB-L720U/EB-L630U/EB-L530U/EB-L520U

[Units: mm]

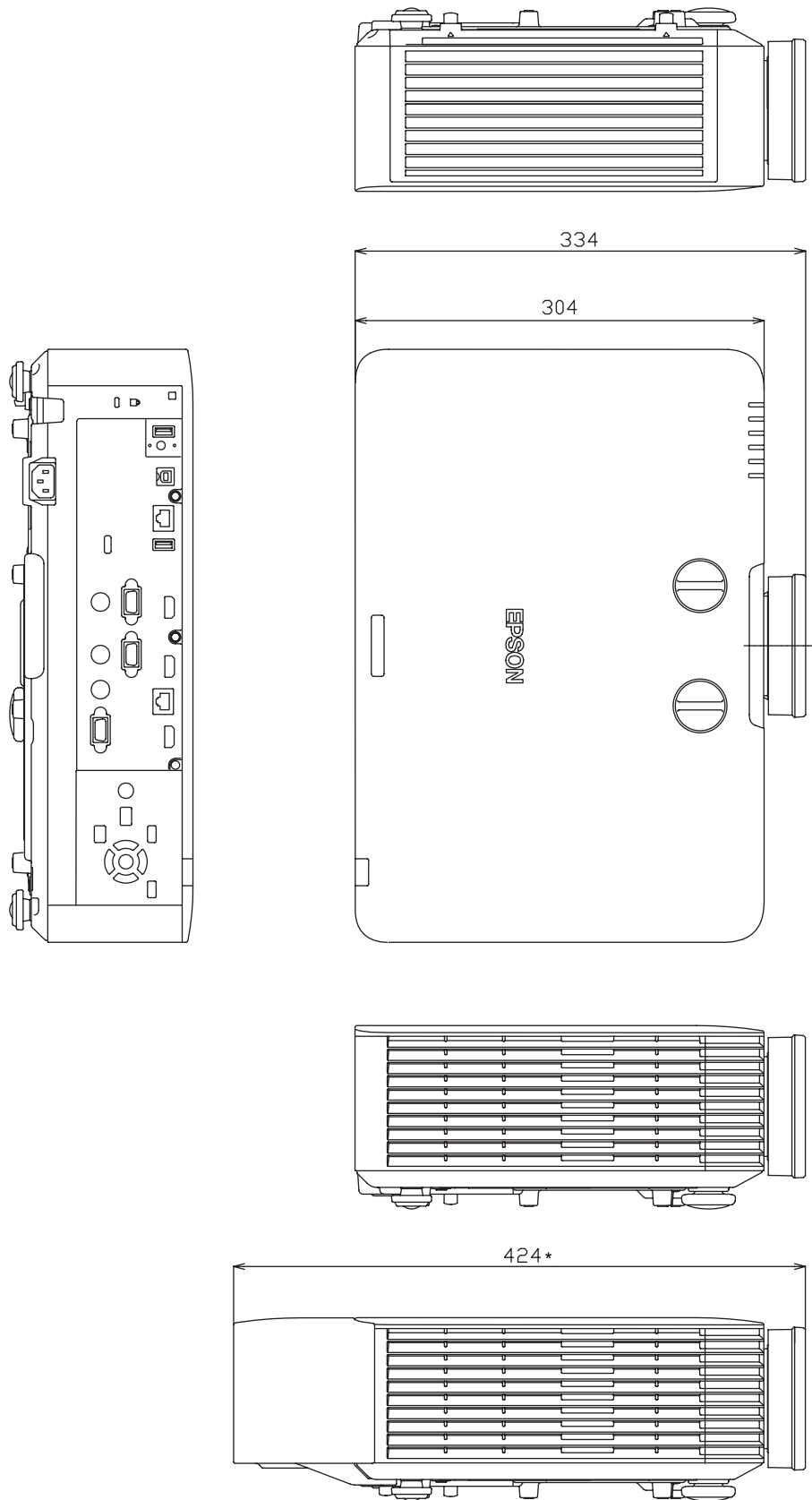


*Dimensions when the cable cover is attached.

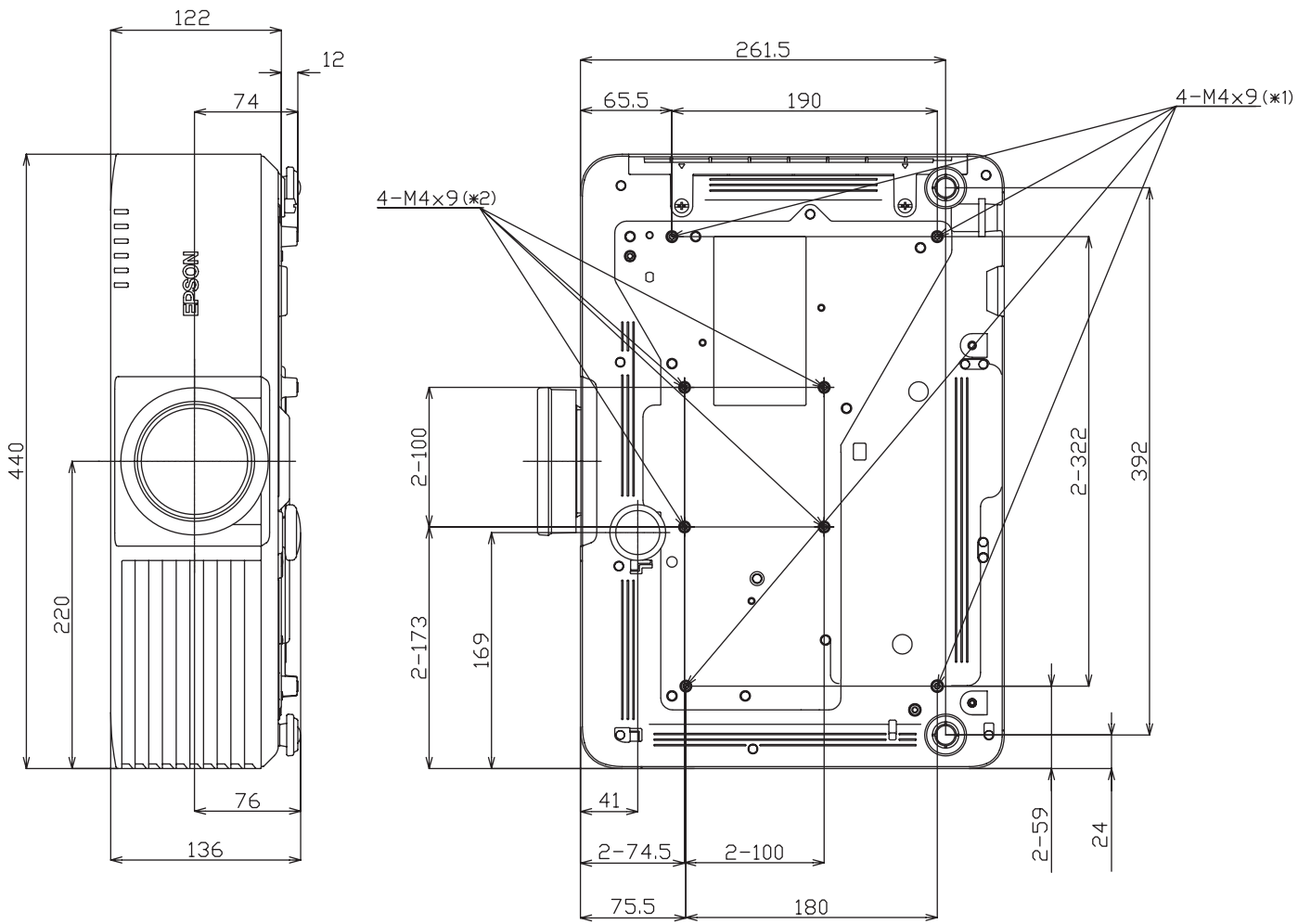


*1 Mounting section for optional mount.

*2 Mounting section for mount conforming to VESA standards (100 x 100 mm).



*Dimensions when the cable cover is attached.



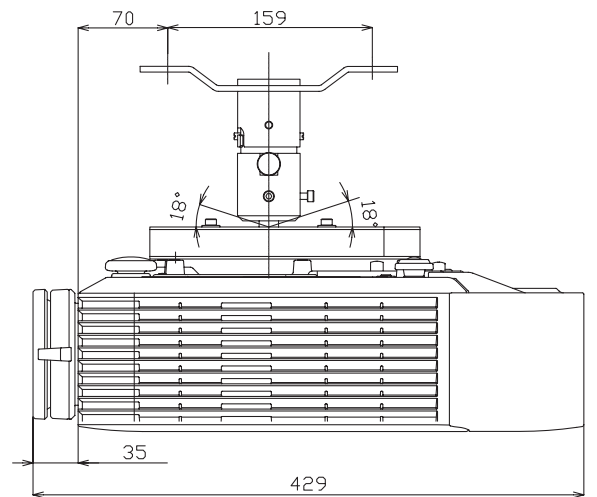
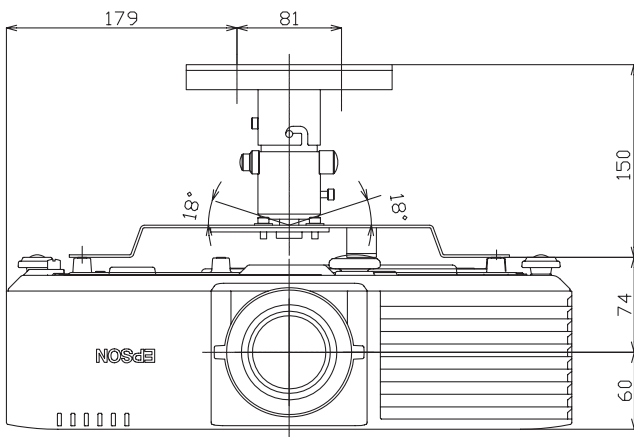
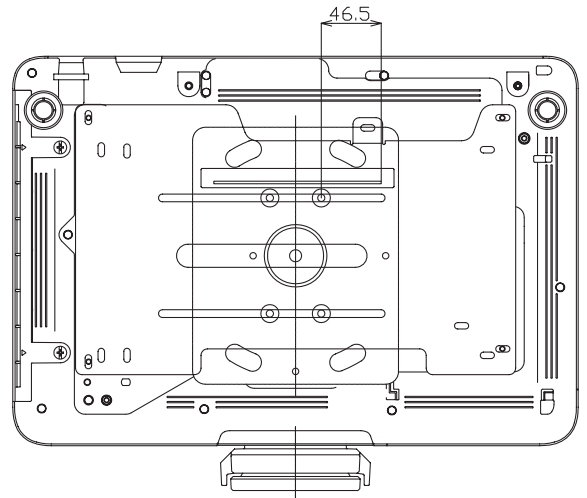
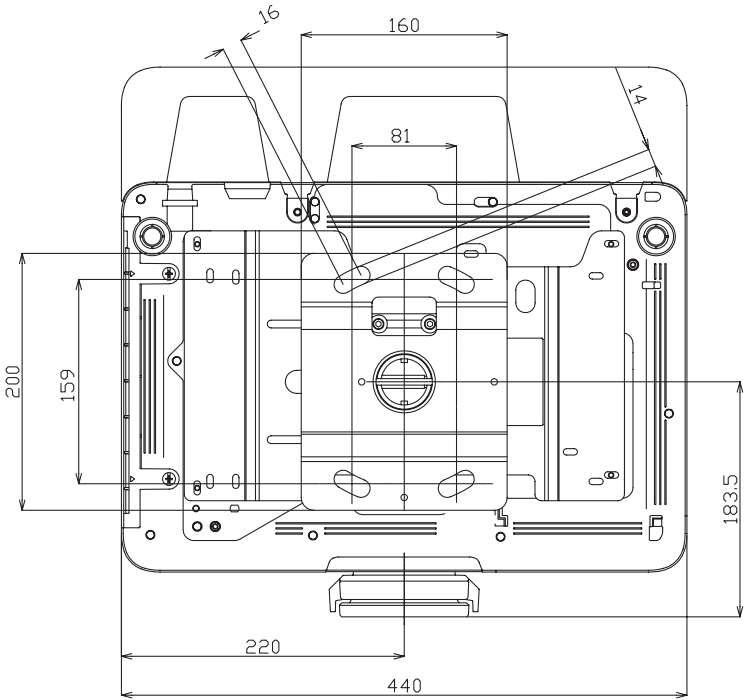
*1 Mounting section for optional mount.

*2 Mounting section for mount conforming to VESA standards (100 x 100 mm).

■ Dimensions with Ceiling Mount (ELPMB22)

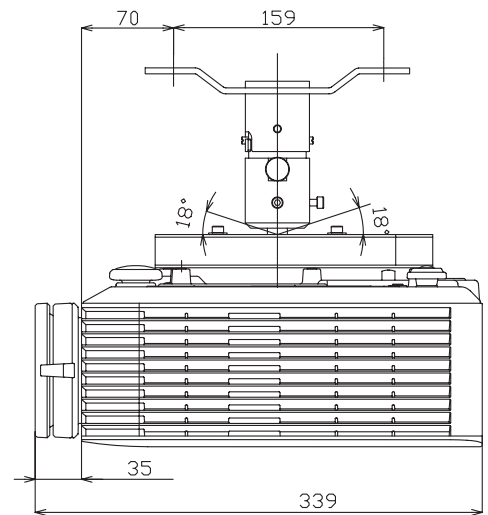
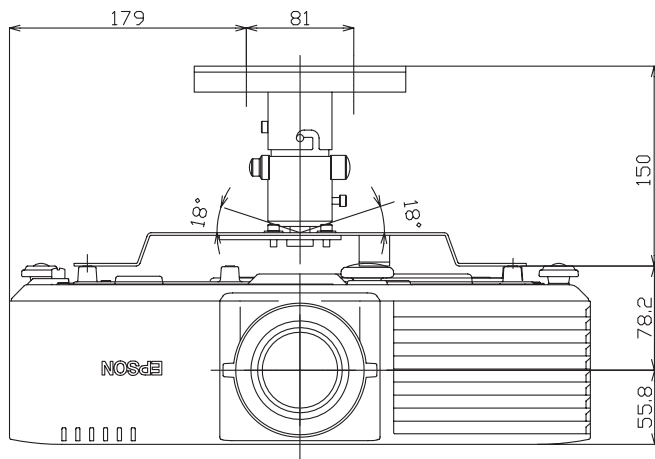
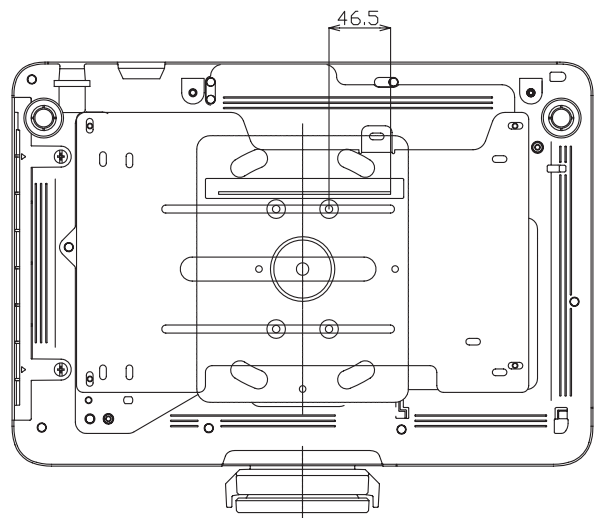
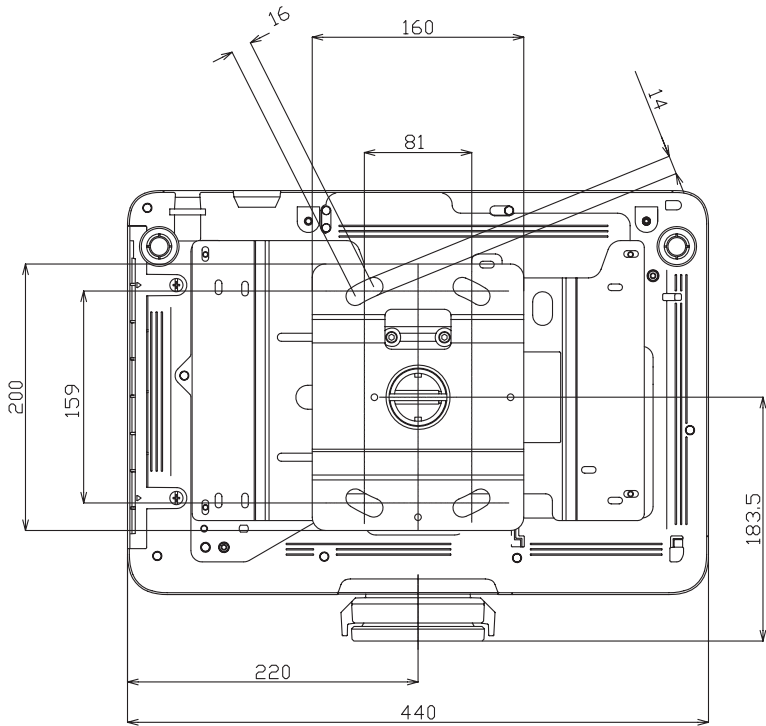
EB-L735U/EB-L730U/EB-L630U/EB-L530U

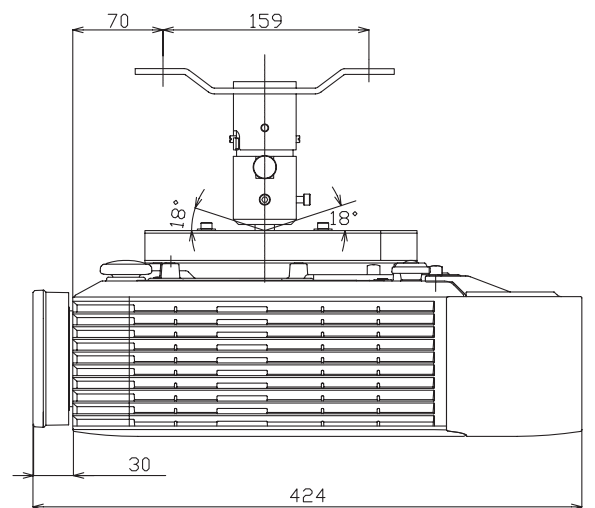
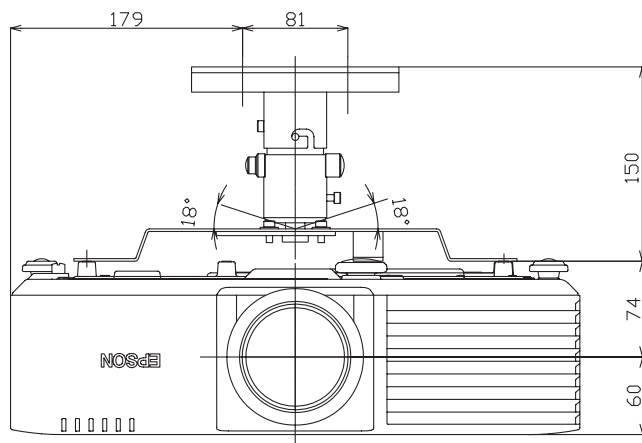
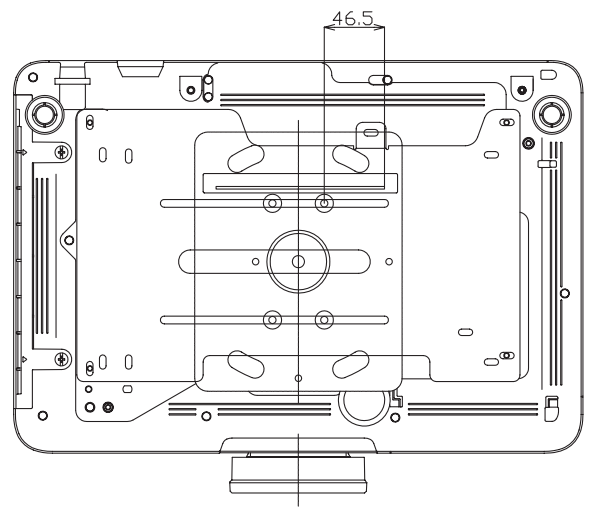
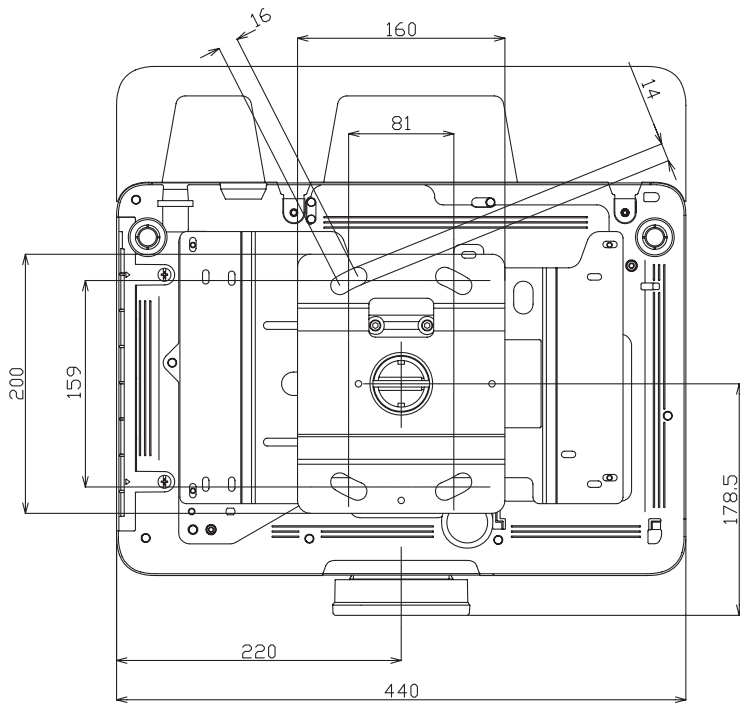
[Units: mm]



EB-L720U/EB-L520U

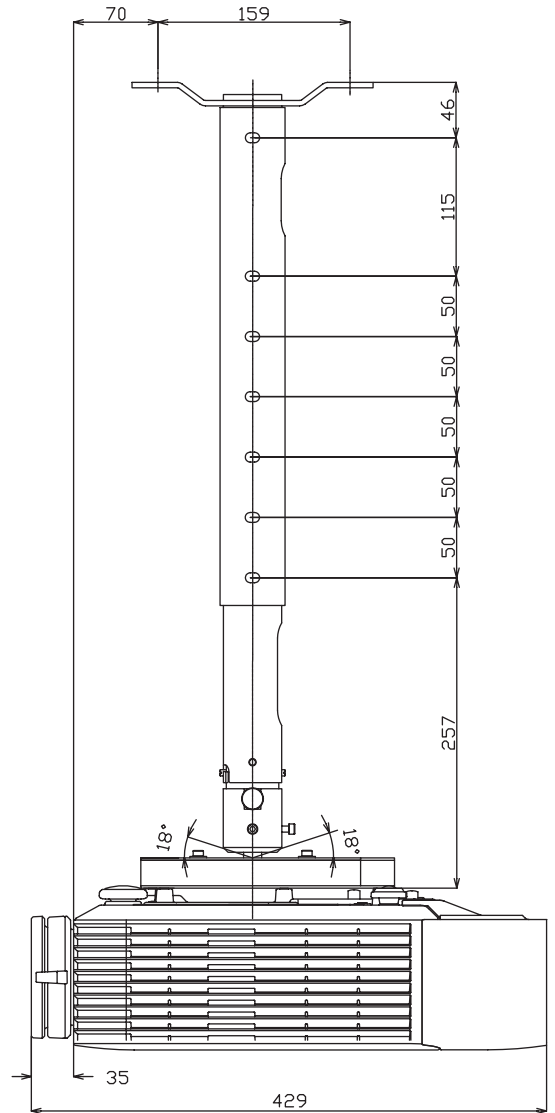
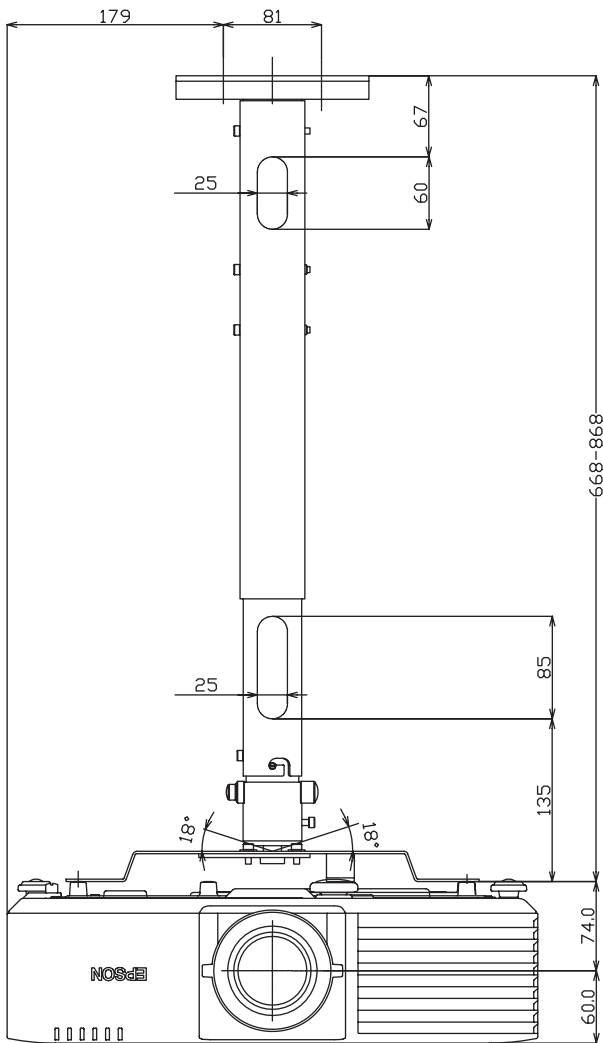
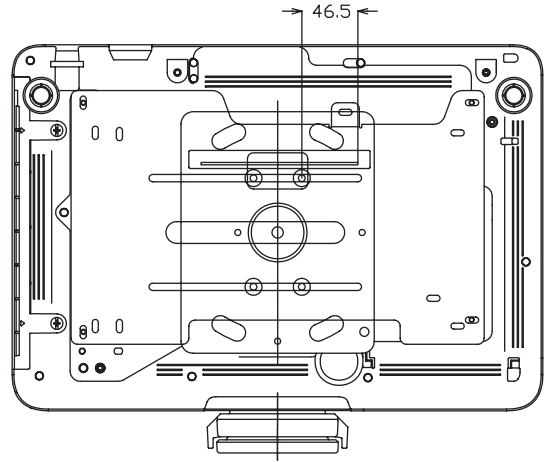
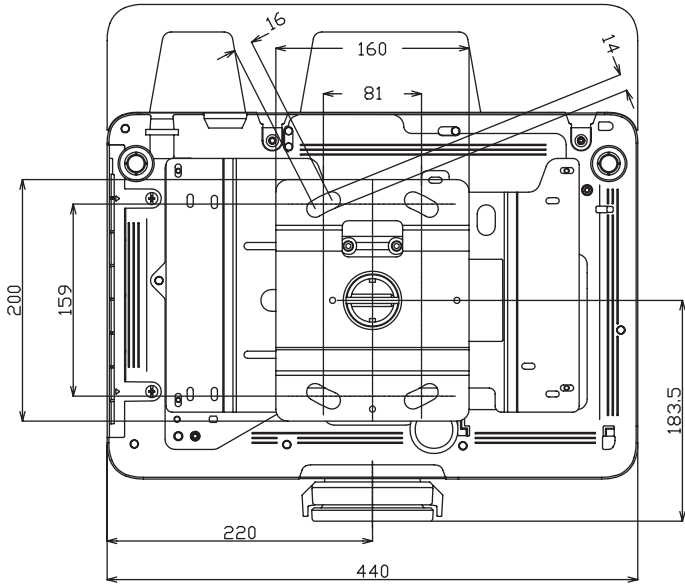
[Units: mm]

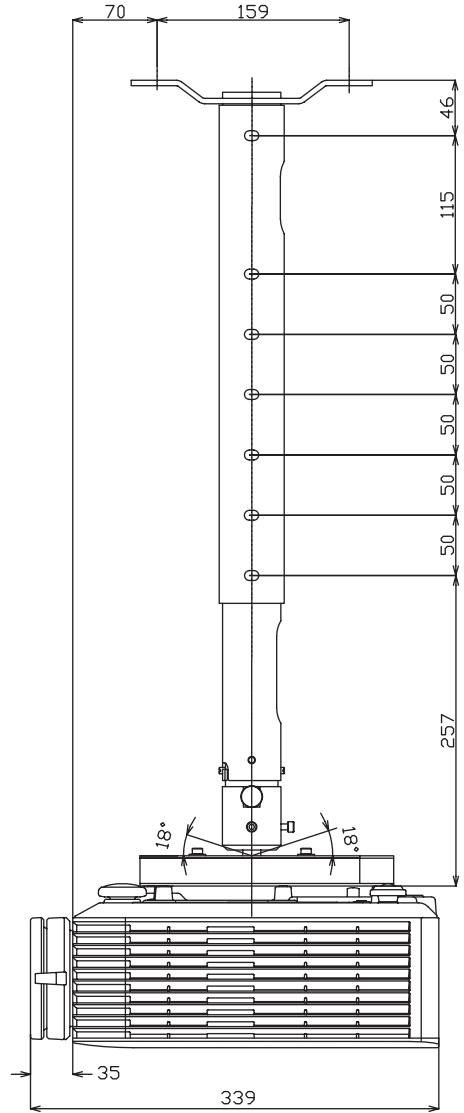
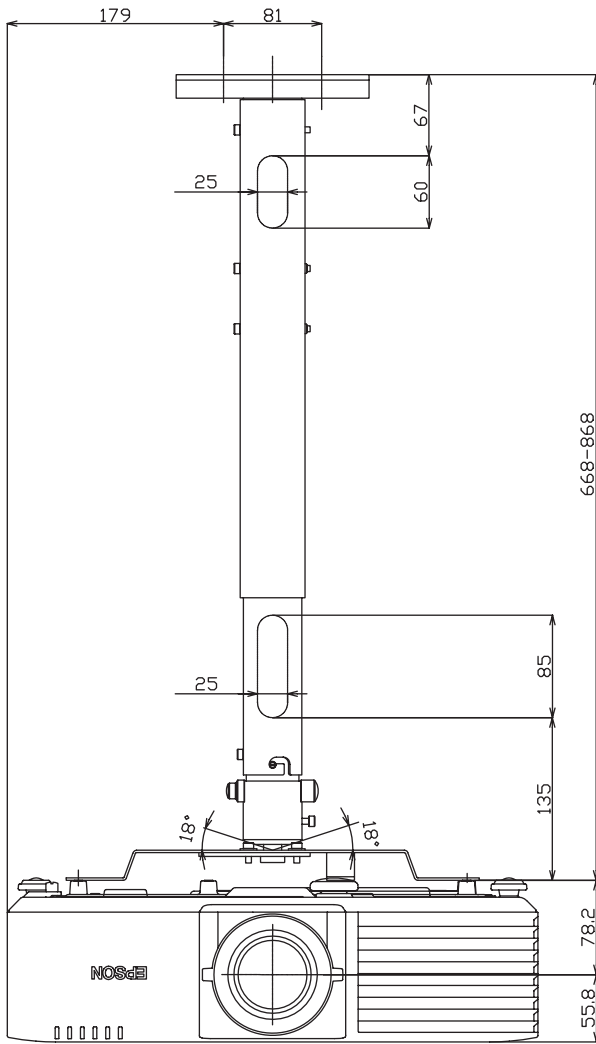
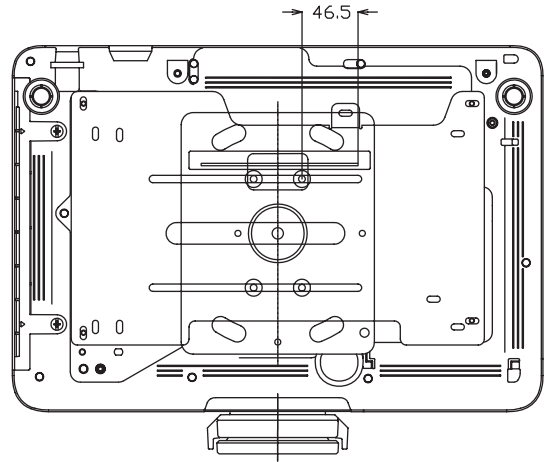
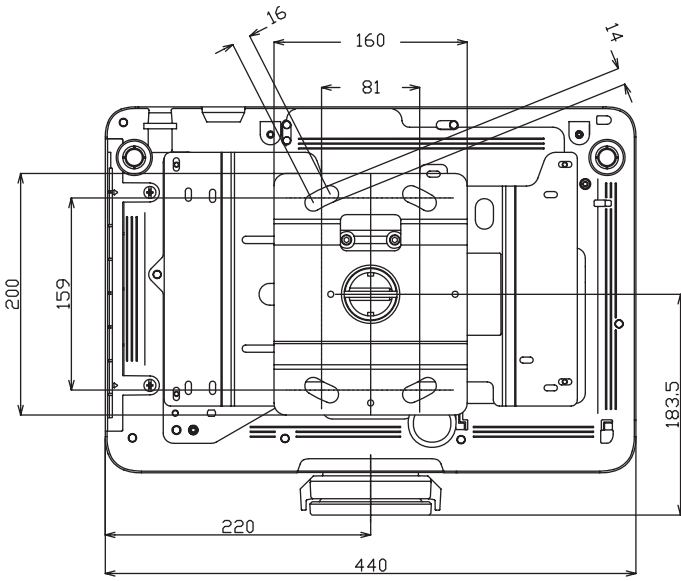




When using Ceiling mount (ELPMB22) and Ceiling pipe 450 (ELPPF13)
EB-L735U/EB-L730U/EB-L630U/EB-L530U

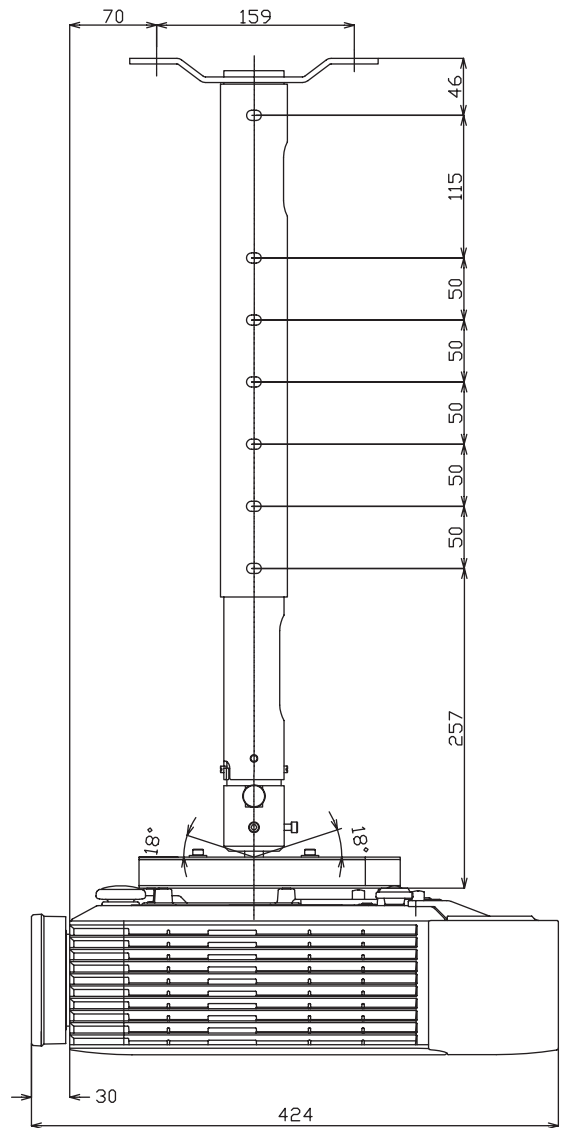
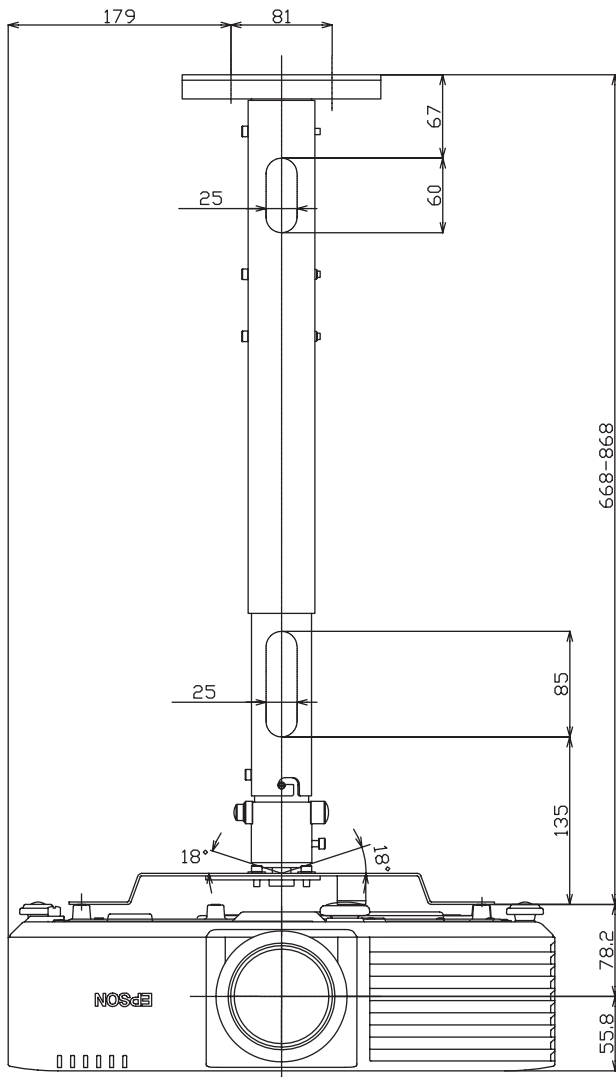
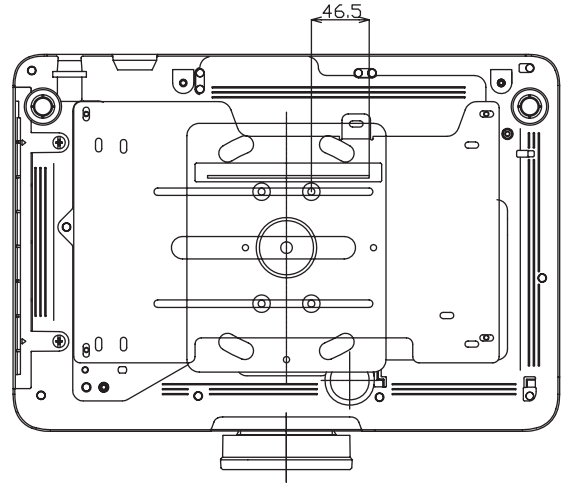
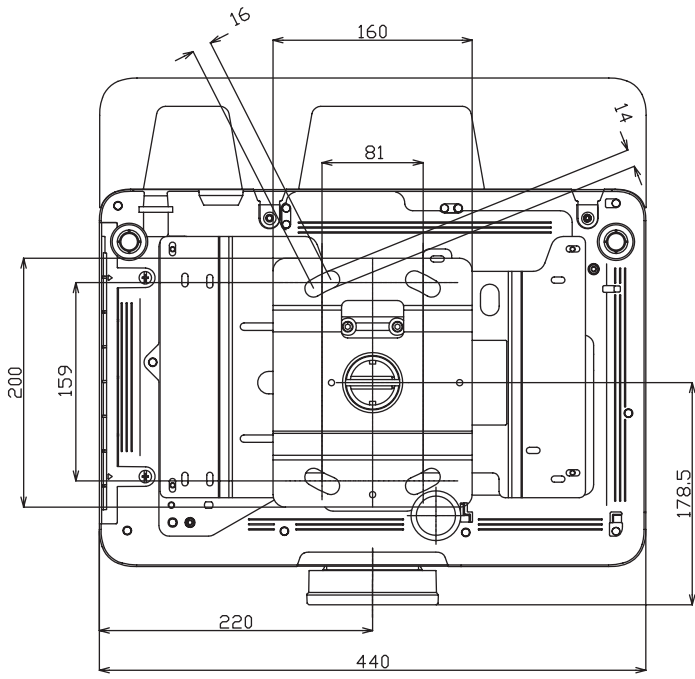
[Units: mm]





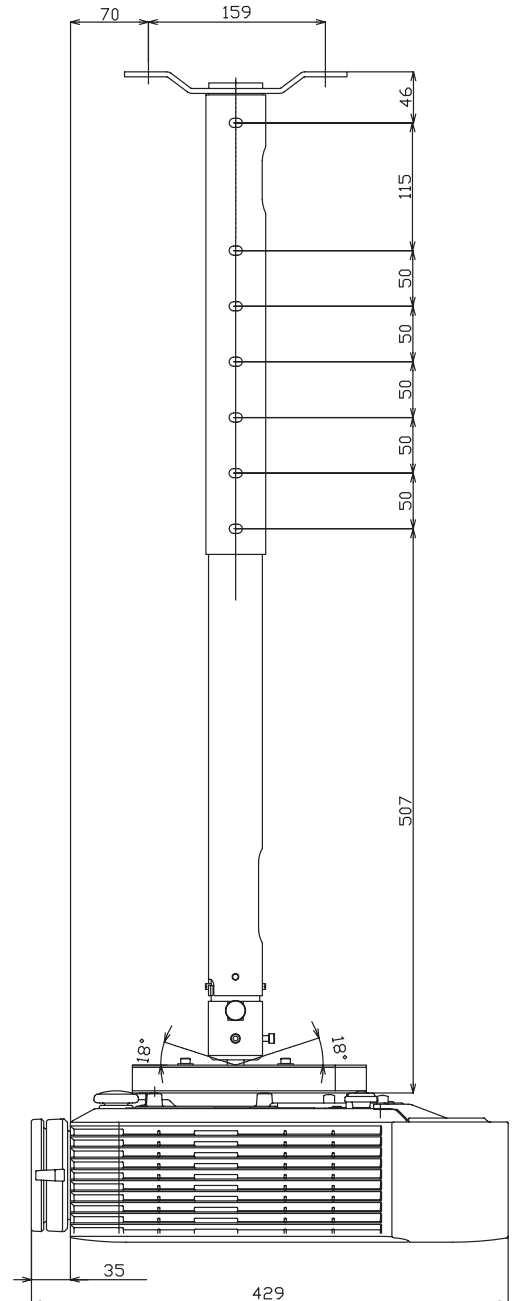
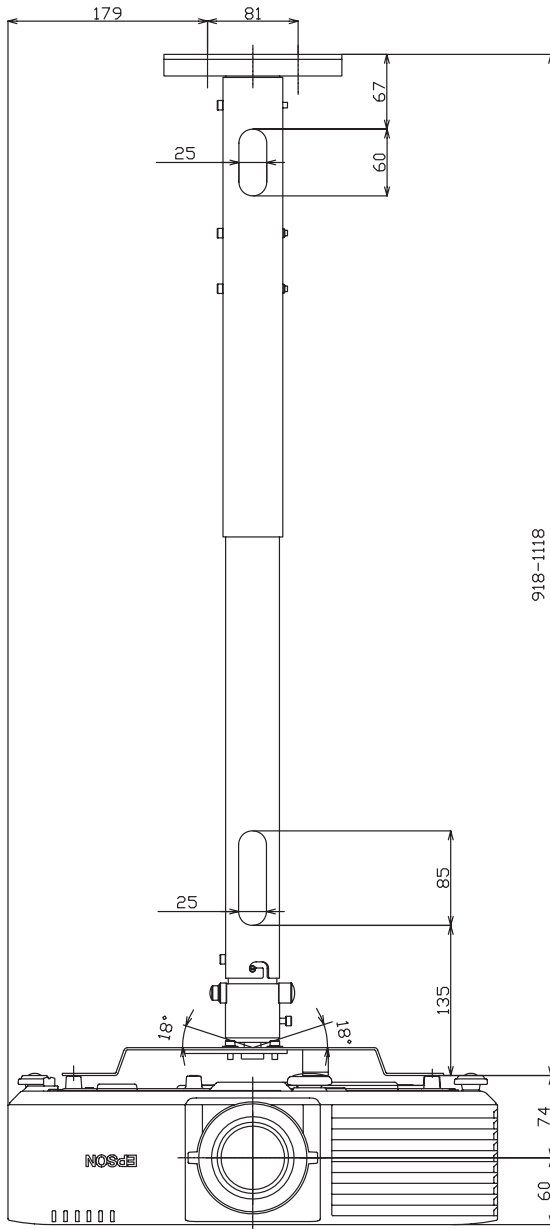
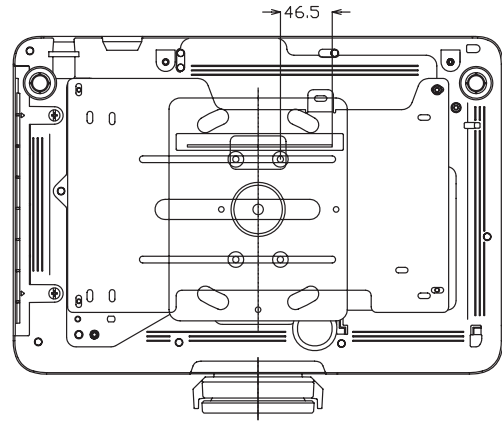
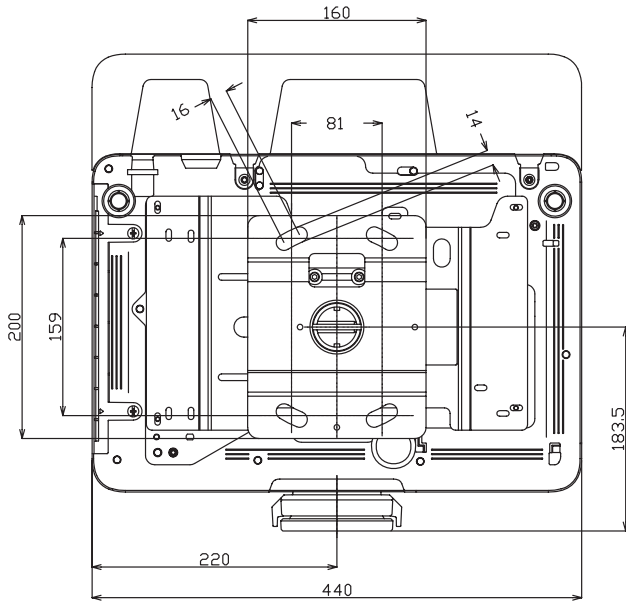
EB-L635SU/EB-L630S

[Units: mm]



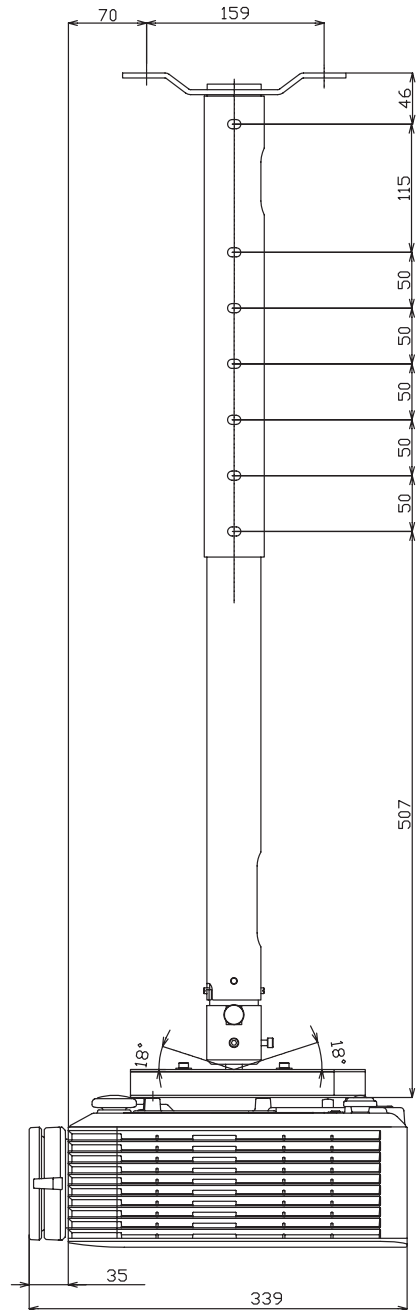
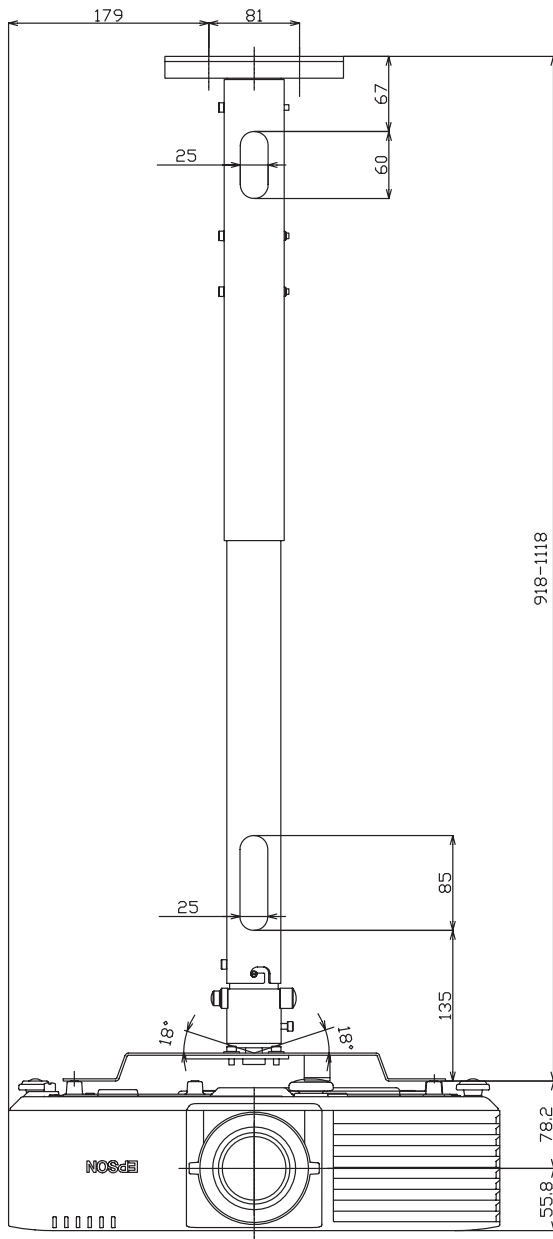
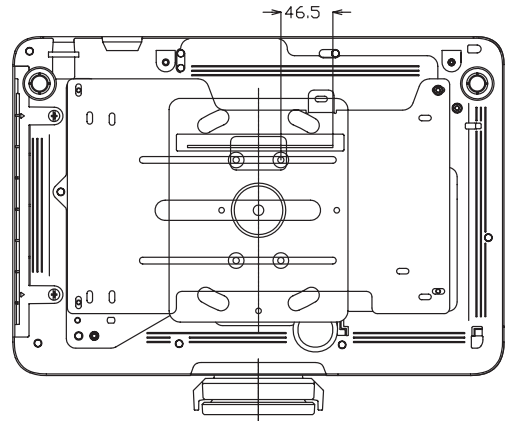
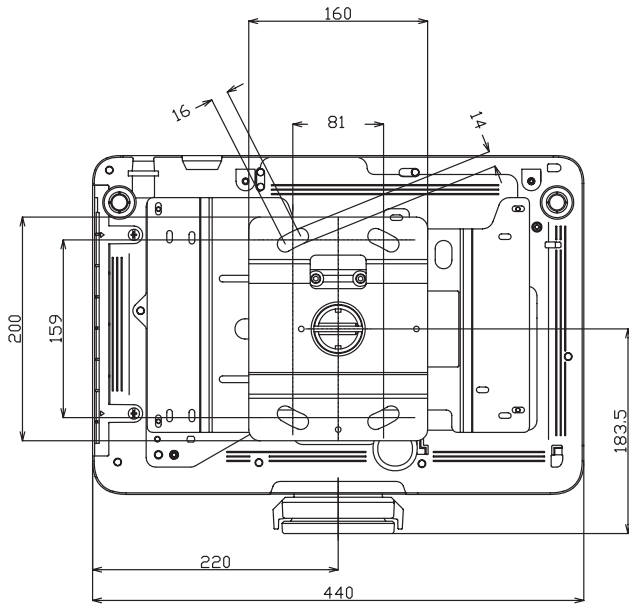
When using Ceiling mount (ELPMB22) and Ceiling pipe 700 (ELPPFP14)
 EB-L735U/EB-L730U/EB-L630U/EB-L530U

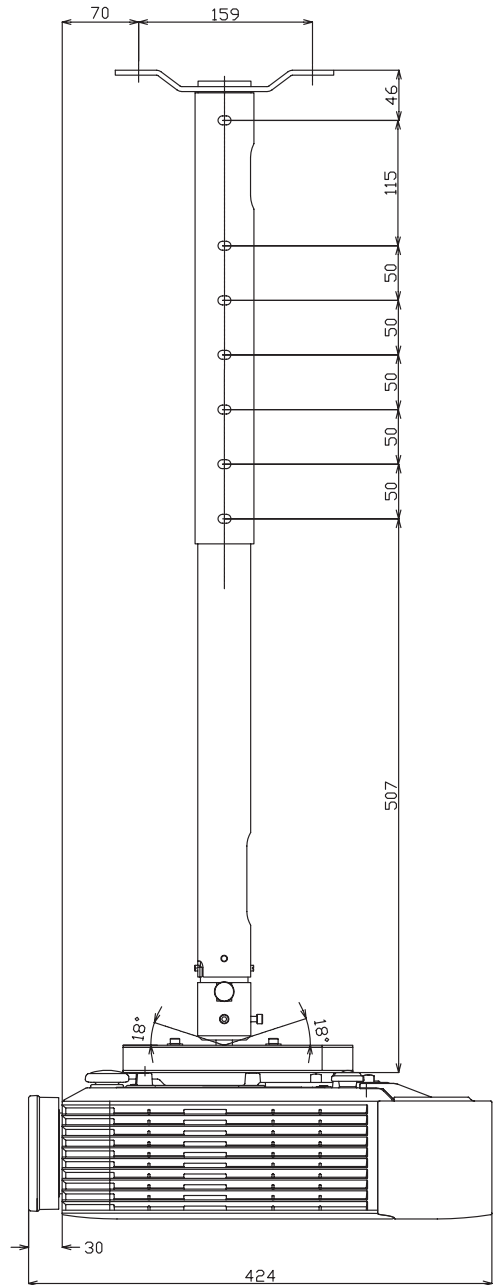
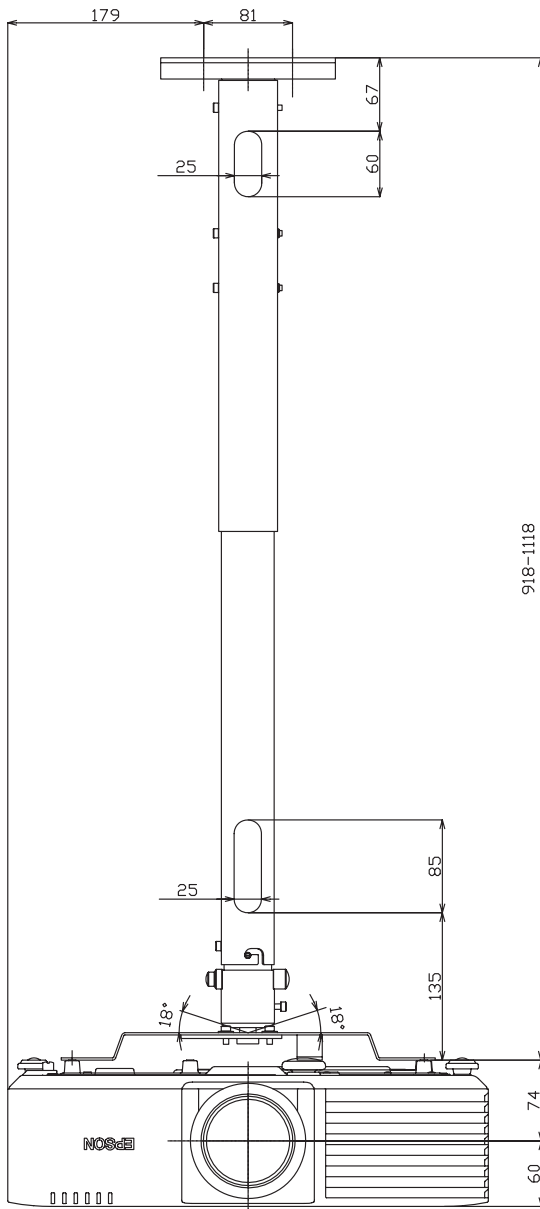
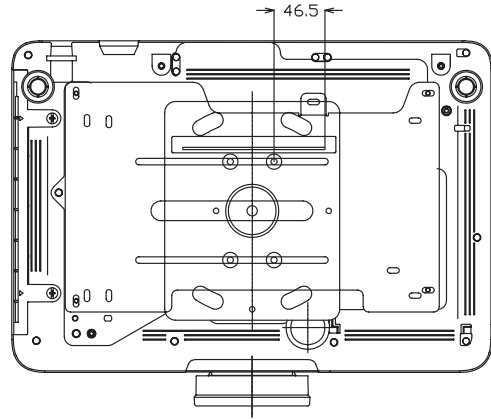
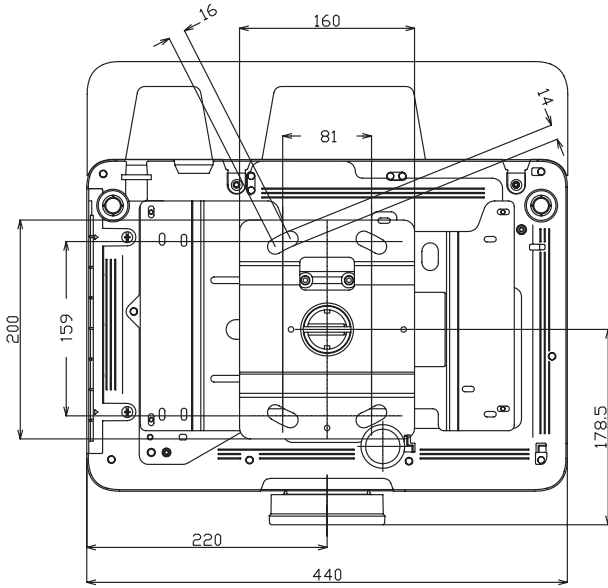
[Units: mm]



EB-L720U/EB-L520U

[Units: mm]

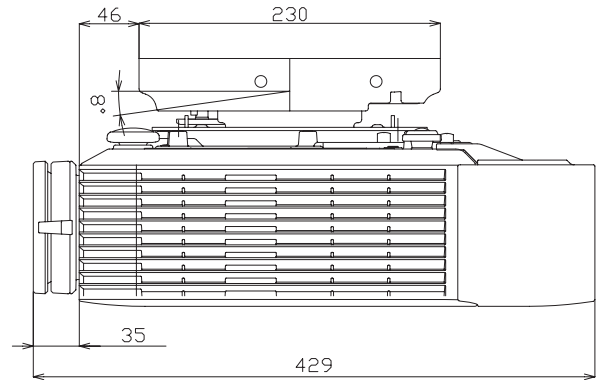
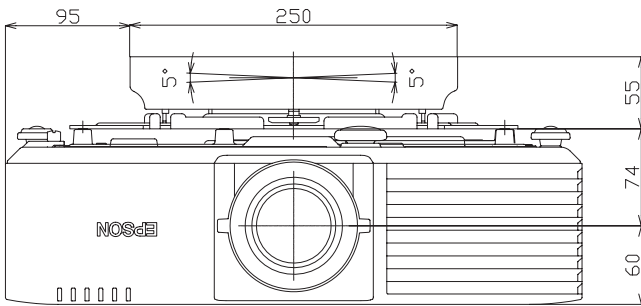
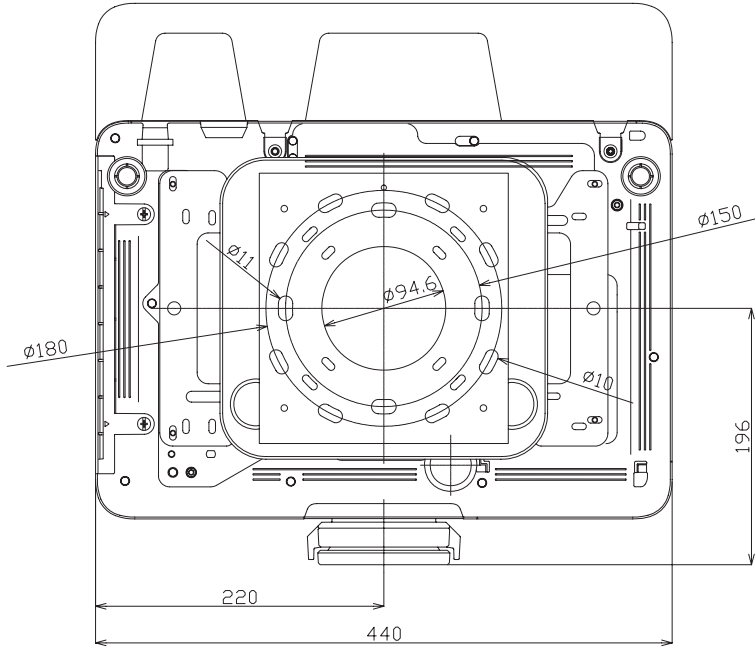


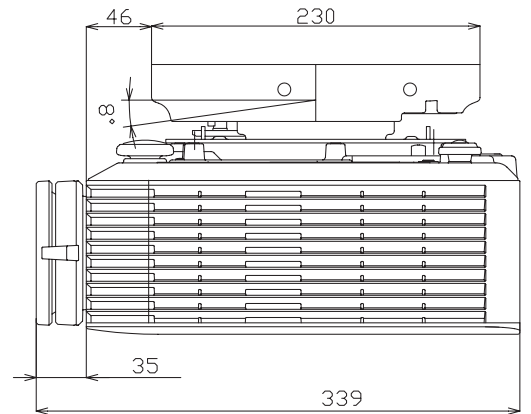
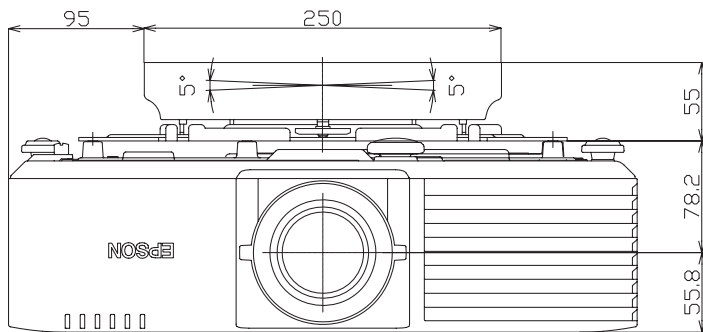
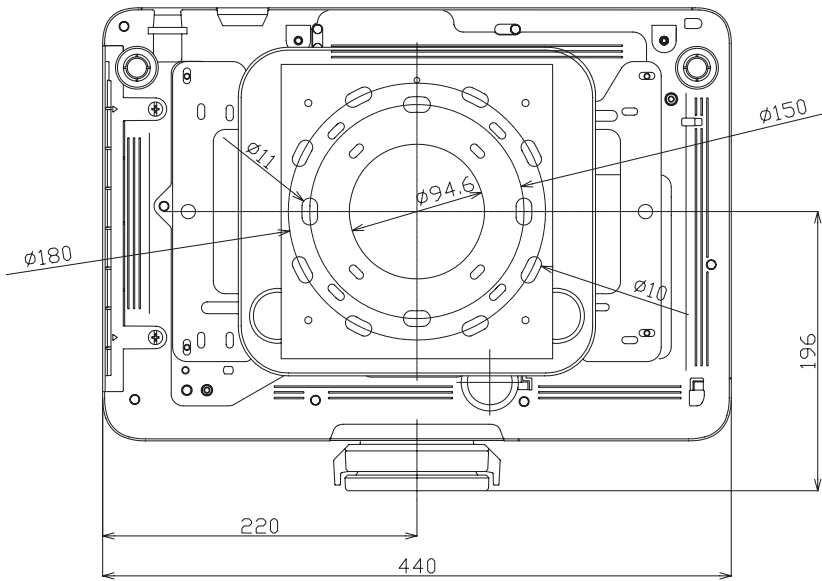


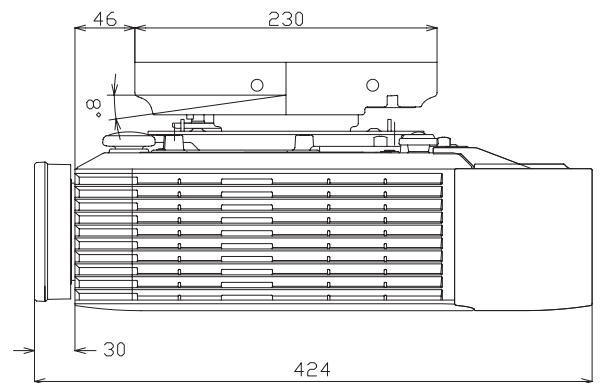
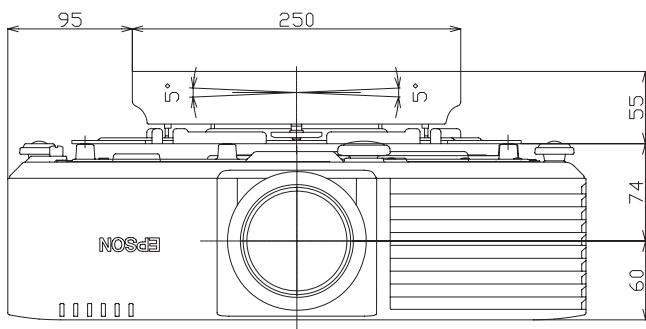
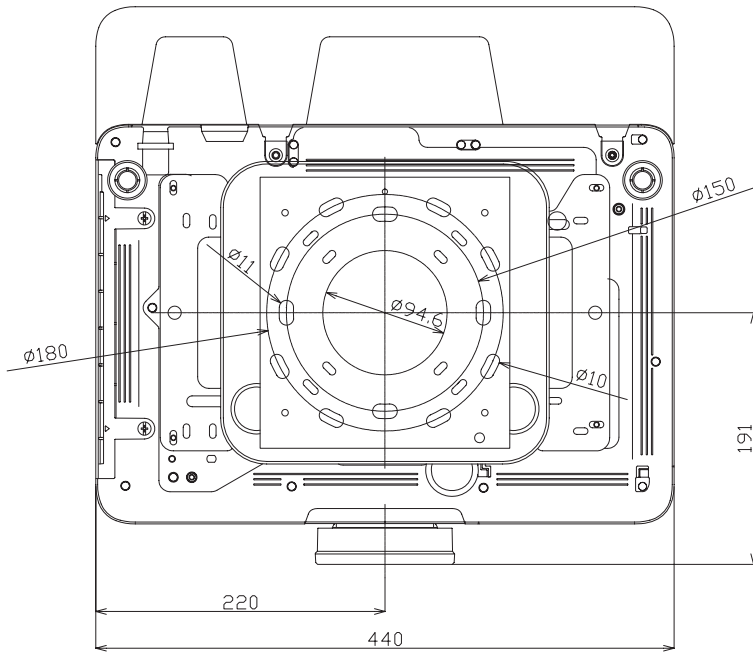
■ Dimensions with Ceiling Mount (Low profile) (ELPMB30)

EB-L735U/EB-L730U/EB-L630U/EB-L530U

[Units: mm]

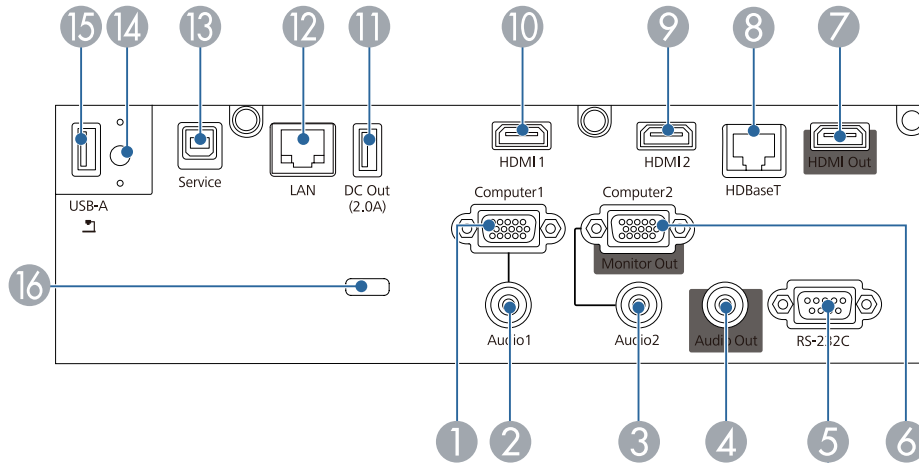
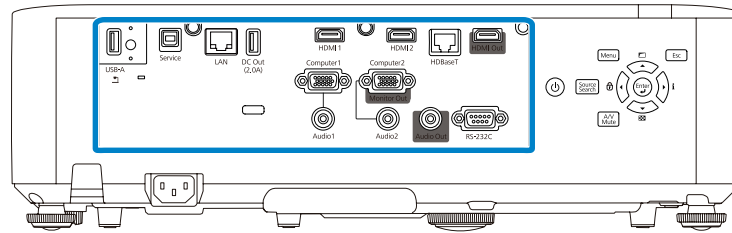






Interface

* Position of interface on projector



No.	Name	No.	Name
①	Computer1 port (Mini D-Sub 15-pin, female)	⑨	HDMI2 port ^{*3*4}
②	Audio1 port (Stereo mini pin jack)	⑩	HDMI1 port ^{*3*4}
③	Audio2 port (Stereo mini pin jack)	⑪	DC Out port (EB-L735U/EB-L730U/EB-L635SU/EB-L630SU/EB-L630U/EB-L530U)
④	Audio Out port (Stereo mini pin jack)	⑫	LAN port (RJ45: 100Base-TX) ^{*5}
⑤	RS-232C port (Mini D-Sub 9-pin, male) ^{*1}	⑬	Service port (USB Type-B) ^{*2}
⑥	Computer2/Monitor Out port (Mini D-Sub15-pin, female)	⑭	Wireless LAN module fixing screw
⑦	HDMI Out port (EB-L735U/EB-L730U/EB-L635SU/EB-L630SU/EB-L630U/EB-L530U) ^{*4}	⑮	USB-A port
⑧	HDBaseT port ^{*4*5}	⑯	Cable holder

*1 You do not need to use this port normally.

*2 This port is used for batch setup.

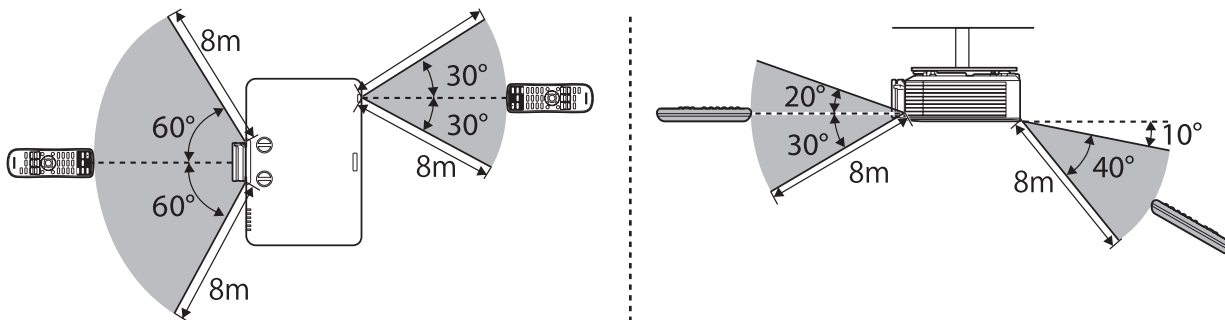
*3 Audio is only supported by PCM.

*4 HDCP2.3 is supported.

*5 Make sure you use LAN cables that are straight STP cables, category 5e or higher, and recommended by the HDBaseT Alliance.

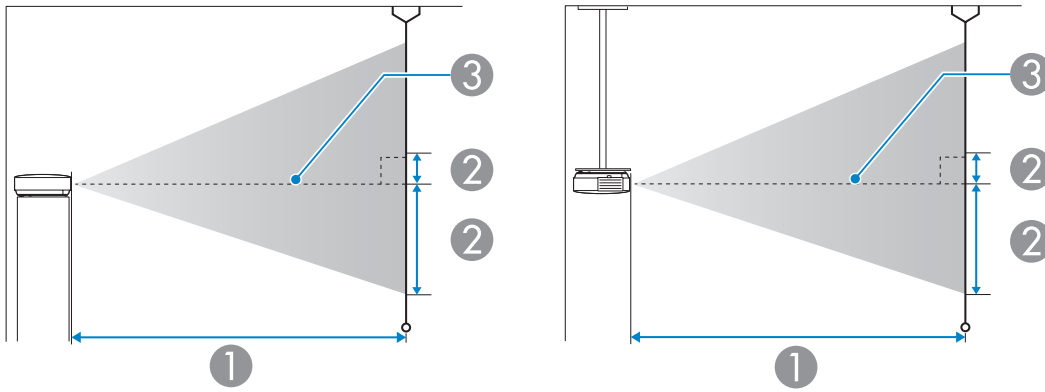
Remote Control Operating Range (Wireless)

The following shows the operation range for the remote control supplied with the projector.



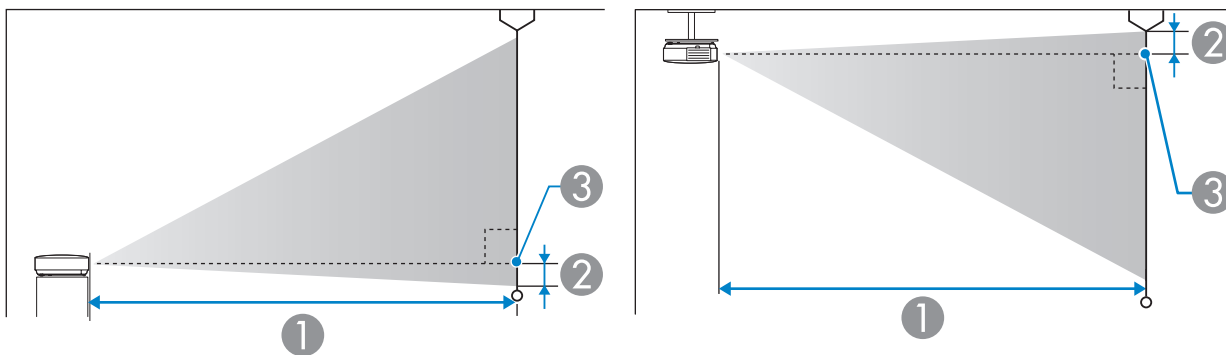
■ Screen Size and Projection Distance

EB-L735U/EB-L730U/EB-L635SU/EB-L630SU/EB-L630U/EB-L530U



- ① Projection distance (cm)
- ② Distance from the center of the lens to the base of the screen (This changes depending on the setting for vertical lens shift.) (cm)
- ③ Center of lens

EB-L720U/EB-L520U



- ① Projection distance (cm)
- ② Distance from the center of the lens to the base of the screen (or to the top of the screen, if suspended from a ceiling) (cm)
- ③ Center of lens

EB-L720U/EB-L520U do not support lens shift.

■ Projection Distance Formula

EB-L735U/EB-L730U/EB-L720U/EB-L630U/EB-L530U/EB-L520U

<For screens with an aspect ratio of 16:10>

Projection distance (①) formula	
Minimum	Projection distance (cm) = Projection screen size (inches) × 2.95848 - 3.5728
Maximum	Projection distance (cm) = Projection screen size (inches) × 4.7743 - 3.5078

<For screens with an aspect ratio of 4:3>

Projection distance (①) formula	
Minimum	Projection distance (cm) = Projection screen size (inches) × 3.34923 - 3.5728
Maximum	Projection distance (cm) = Projection screen size (inches) × 5.40488 - 3.5078

<For screens with an aspect ratio of 16:9>

Projection distance (①) formula	
Minimum	Projection distance (cm) = Projection screen size (inches) × 3.04074 - 3.5728
Maximum	Projection distance (cm) = Projection screen size (inches) × 4.90704 - 3.5078

<For screens with an aspect ratio of 16:6>

Projection distance (①) formula	
Minimum	Projection distance (cm) = Projection screen size (inches) × 3.26665 - 3.5728
Maximum	Projection distance (cm) = Projection screen size (inches) × 5.27161 - 3.5078

EB-L635SU/EB-L630SU

<For screens with an aspect ratio of 16:10>

Projection distance (①) formula	
Minimum	Projection distance (cm) = Projection screen size (inches) × 1.76148 - 3.00768
Maximum	Projection distance (cm) = Projection screen size (inches) × 2.378 - 4.06037

<For screens with an aspect ratio of 4:3>

Projection distance (①) formula	
Minimum	Projection distance (cm) = Projection screen size (inches) × 1.99413 - 3.00768
Maximum	Projection distance (cm) = Projection screen size (inches) × 2.69208 - 4.06037

<For screens with an aspect ratio of 16:9>

Projection distance (①) formula	
Minimum	Projection distance (cm) = Projection screen size (inches) × 1.81046 - 3.00768
Maximum	Projection distance (cm) = Projection screen size (inches) × 2.44411 - 4.06037

<For screens with an aspect ratio of 16:6>

Projection distance (①) formula	
Minimum	Projection distance (cm) = Projection screen size (inches) × 1.94496 - 3.00768
Maximum	Projection distance (cm) = Projection screen size (inches) × 2.6257 - 4.06037

Projection Distance

The projection distances are approximate values.

Visit the following Web site to find the projection distance calculator.

<https://epson.com/>

EB-L735U/EB-L730U/EB-L630U/EB-L530U

<For screens with an aspect ratio of 16:10>

[Units: cm]

Screen size		①	②
Inches (Diagonally)	Width × Height	Minimum (Wide) to Maximum (Tele)	Vertical lens shift (Bottom to Top)
50	108 × 67	144 - 235	-67 - 0
60	129 × 81	174 - 283	-81 - 0
70	151 × 94	204 - 331	-94 - 0
80	172 × 108	233 - 378	-108 - 0
100	215 × 135	292 - 474	-135 - 0
120	258 × 162	351 - 569	-162 - 0
150	323 × 202	440 - 713	-202 - 0
200	431 × 269	588 - 951	-269 - 0
300	646 × 404	884 - 1429	-404 - 0
500	1077 × 673	1476 - 2384	-673 - 0

<For screens with an aspect ratio of 4:3>

[Units: cm]

Screen size		①	②
Inches (Diagonally)	Width × Height	Minimum (Wide) to Maximum (Tele)	Vertical lens shift (Bottom to Top)
45	91 × 69	147 - 240	-69 - 0
50	102 × 76	164 - 267	-76 - 0
60	122 × 91	197 - 321	-91 - 0
80	163 × 122	264 - 429	-122 - 0
100	203 × 152	331 - 537	-152 - 0
110	224 × 168	365 - 591	-168 - 0
120	244 × 183	398 - 645	-183 - 0
150	305 × 229	499 - 807	-229 - 0
200	406 × 305	666 - 1077	-305 - 0
300	610 × 457	1001 - 1618	-457 - 0
440	894 × 671	1470 - 2375	-671 - 0

<For screens with an aspect ratio of 16:9>

[Units: cm]

Screen size		①	②
Inches (Diagonally)	Width × Height	Minimum (Wide) to Maximum (Tele)	Vertical lens shift (Bottom to Top)
49	108 × 61	145 - 237	-64 - 3
50	111 × 62	148 - 242	-66 - 3
60	133 × 75	179 - 291	-79 - 4
80	177 × 100	240 - 389	-105 - 6
100	221 × 125	301 - 487	-131 - 7
110	244 × 137	331 - 536	-145 - 8
120	266 × 149	361 - 585	-158 - 8
150	332 × 187	453 - 733	-197 - 10
200	443 × 249	605 - 978	-263 - 14
300	664 × 374	909 - 1469	-394 - 21
480	1063 × 598	1456 - 2352	-631 - 33

<For screens with an aspect ratio of 16:6>

[Units: cm]

Screen size		①	②
Inches (Diagonally)	Width × Height	Minimum (Wide) to Maximum (Tele)	Vertical lens shift (Bottom to Top)
46	109 × 61	147 - 239	-55 - 14
50	119 × 45	160 - 260	-59 - 15
60	143 × 54	192 - 313	-71 - 18
70	166 × 62	225 - 366	-83 - 21
80	190 × 71	258 - 418	-95 - 24
100	238 × 89	323 - 524	-119 - 30
120	285 × 107	388 - 629	-143 - 36
150	357 × 134	486 - 787	-178 - 45
200	476 × 178	650 - 1051	-238 - 59
300	713 × 268	976 - 1578	-357 - 89
452	1075 × 403	1473 - 2379	-537 - 134

EB-L635SU/EB-L630SU

<For screens with an aspect ratio of 16:10>

[Units: cm]

Screen size		① *1	②
Inches (Diagonally)	Width × Height	Minimum (Wide) to Maximum (Tele)	Vertical lens shift (Bottom to Top)
50	108 × 67	85 - 115	-67 - 0
60	129 × 81	103 - 139	-81 - 0
80	172 × 108	138 - 186	-108 - 0
90	194 × 121	156 - 210	-121 - 0
100	215 × 135	173 - 234	-135 - 0
148	319 × 199	258 - 348	-199 - 0
150	323 × 202	261 ^{*2}	-202 - 0
180	388 × 242	314 ^{*2}	-242 - 0
200	431 × 269	349 ^{*2}	-269 - 0

<For screens with an aspect ratio of 4:3>

[Units: cm]

Screen size		① *1	②
Inches (Diagonally)	Width × Height	Minimum (Wide) to Maximum (Tele)	Vertical lens shift (Bottom to Top)
45	91 × 69	87 - 117	-69 - 0
50	102 × 76	97 - 131	-76 - 0
60	122 × 91	117 - 157	-91 - 0
80	163 × 122	157 - 211	-122 - 0
90	183 × 137	176 - 238	-137 - 0
100	203 × 152	196 - 265	-152 - 0
120	244 × 183	236 - 319	-183 - 0
130	264 × 198	256 - 346	-198 - 0
150	305 × 229	296 ^{*2}	-229 - 0
176	358 × 268	348 ^{*2}	-268 - 0

<For screens with an aspect ratio of 16:9>

[Units: cm]

Screen size		① *1	②
Inches (Diagonally)	Width × Height	Minimum (Wide) to Maximum (Tele)	Vertical lens shift (Bottom to Top)
49	108 × 61	86 - 116	-64 - 3
50	111 × 62	88 - 118	-66 - 3
60	133 × 75	106 - 143	-79 - 4
80	177 × 100	142 - 191	-105 - 6
100	221 × 125	178 - 240	-131 - 7
120	266 × 149	214 - 289	-158 - 8
144	319 × 179	258 - 348	-189 - 10
150	332 × 187	269 ^{*2}	-197 - 10
180	398 × 224	323 ^{*2}	-237 - 12
194	429 × 242	348 ^{*2}	-255 - 13

<For screens with an aspect ratio of 16:6>

[Units: cm]

Screen size		① *1	②
Inches (Diagonally)	Width × Height	Minimum (Wide) to Maximum (Tele)	Vertical lens shift (Bottom to Top)
46	109 × 41	86 - 117	-55 - 14
50	119 × 45	94 - 127	-59 - 15
60	143 × 54	114 - 153	-71 - 18
80	190 × 71	153 - 206	-95 - 24
100	238 × 89	191 - 259	-119 - 30
120	285 × 107	230 - 311	-143 - 36
134	319 × 120	258 - 348	-159 - 40
150	357 × 134	289*2	-178 - 45
180	428 × 161	347*2	-214 - 54
181	430 × 161	349*2	-215 - 54

*1 Maximum (Tele): Digital Zoom

*2 Projecting in Wide (maximum zoom)

EB-L720U/EB-L520U

<For screens with an aspect ratio of 16:10>

[Units: cm]

Screen size		①	②
Inches (Diagonally)	Width × Height	Minimum (Wide) to Maximum (Tele)	
50	108 × 67	144 - 235	-2
60	129 × 81	174 - 283	-3
70	151 × 94	204 - 331	-3
80	172 × 108	233 - 378	-4
100	215 × 135	292 - 474	-5
120	258 × 162	351 - 569	-6
150	323 × 202	440 - 713	-7
200	431 × 269	588 - 951	-10
300	646 × 404	884 - 1429	-14
500	1077 × 673	1476 - 2384	-24

<For screens with an aspect ratio of 4:3>

[Units: cm]

Screen size		①	②
Inches (Diagonally)	Width × Height	Minimum (Wide) to Maximum (Tele)	
45	91 × 69	147 - 240	-2
50	102 × 76	164 - 267	-3
60	122 × 91	197 - 321	-3
70	142 × 107	231 - 375	-4
80	163 × 122	264 - 429	-4
100	203 × 152	331 - 537	-5
120	244 × 183	398 - 645	-7
150	305 × 229	499 - 807	-8
200	406 × 305	666 - 1077	-11
300	610 × 457	1001 - 1618	-16
440	894 × 671	1470 - 2375	-24

<For screens with an aspect ratio of 16:9>

[Units: cm]

Screen size		①	②
Inches (Diagonally)	Width × Height	Minimum (Wide) to Maximum (Tele)	
49	108 × 61	145 - 237	1
50	111 × 62	148 - 242	1
60	133 × 75	179 - 291	1
70	155 × 87	209 - 340	1
80	177 × 100	240 - 389	2
100	221 × 125	301 - 487	2
120	266 × 149	361 - 585	2
150	332 × 187	453 - 733	3
200	443 × 249	605 - 978	4
300	664 × 374	909 - 1469	6
486	1076 × 605	1474 - 2381	9

<For screens with an aspect ratio of 16:6>

[Units: cm]

Screen size		①	②
Inches (Diagonally)	Width × Height	Minimum (Wide) to Maximum (Tele)	
46	109 × 41	147 - 239	11
50	119 × 45	160 - 260	12
60	143 × 54	192 - 313	15
70	166 × 62	225 - 366	17
80	190 × 71	258 - 418	20
100	238 × 89	323 - 524	24
120	285 × 107	388 - 629	29
150	357 × 134	486 - 787	37
200	476 × 178	650 - 1051	49
300	713 × 268	976 - 1578	73
452	1075 × 403	1473 - 2379	110

Signal type	Signal format	Resolution (Dot)	V Sync (Hz)	Computer		HDMI/HDBaseT								
				RGBHV	YCbCr	RGB			YCbCr					
						8	10	12	4:4:4 4:2:2			4:2:0		
8	10	12	8	10	12	8	10	12						
HD	HDTV (720p)	1280 × 720	50	✓		✓			✓					
			59.94	✓		✓			✓					
			60	✓		✓			✓					
	HDTV (1080i)	1920 × 1080	50			✓			✓					
			59.94			✓			✓					
			60			✓			✓					
	HDTV (1080p)	1920 × 1080	23.98			✓			✓					
			24			✓			✓					
			25											
			29.97			✓			✓					
			30			✓			✓					
			50	✓		✓			✓					
59.94			✓		✓			✓						
60			✓		✓			✓						
4K	3840 × 2160	3840 × 2160	23.98			✓			✓					
			24			✓			✓					
			25			✓			✓					
			29.97			✓			✓					
			30			✓			✓					
			50									✓		
			59.94									✓		
			60									✓		
	4096 × 2160 SMPTE	4096 × 2160	23.98			✓			✓					
			24			✓			✓					
			25											
			29.97											
			30											
			50									✓		
			59.94									✓		
			60									✓		
Unique resolutions	16:6	1920 × 720	60			✓ ^{*3}								

*1 Conforms to VESA CVT-RB (Reduced Blanking).

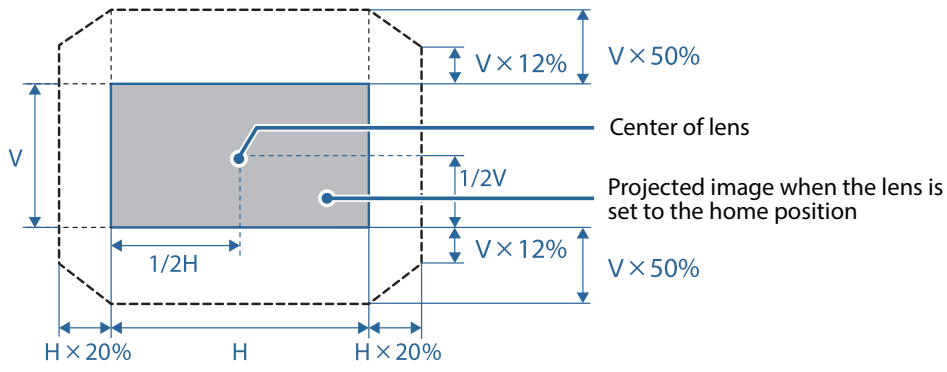
*2 Compatible only when [Wide] is selected as the [Resolution] setting in the projector's [Image] menu.

*3 If the image is not projected correctly, set the timing settings on your computer to match the values in the following tables. (You may not be able to change these settings, depending on your computer.)

Dotclk (MHz)	H Freq (KHz)	Refresh Rate (Hz)	H Active (dot)	H Front Porch (dot)	H Sync Width (dot)	H Back Porch (dot)
95.045	45.96	60	1920	42	32	74
V Active (Line)	V Front Porch (Line)	V Sync Width (Line)	V Back Porch (Line)	H Sync Polarity	V Sync Polarity	Scan Type
720	20	8	18	Positive	Negative	Progressive

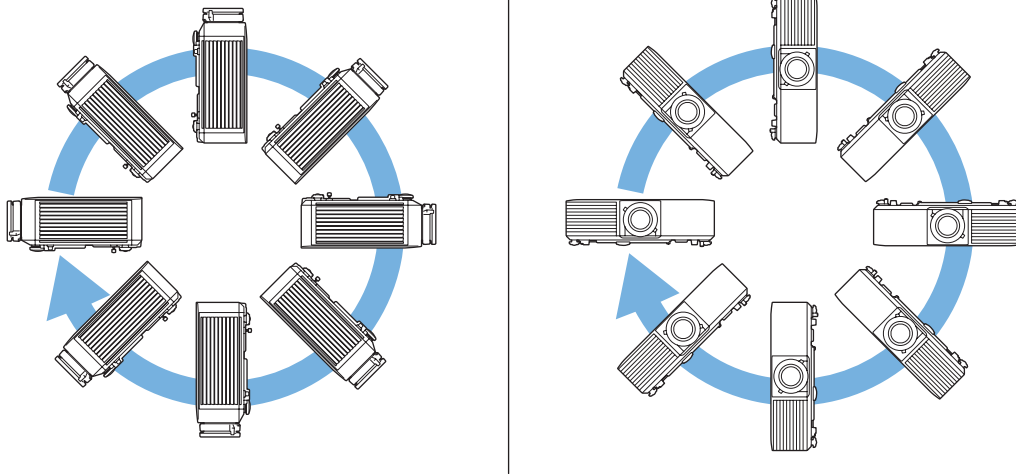
■ Available Lens Shift Adjustment Range

The ranges within which the image can be moved are shown below.
EB-L720U/EB-L520U do not support lens shift.



■ Installation Angle

You can install the projector or mount it to the ceiling at any horizontal or vertical angle.

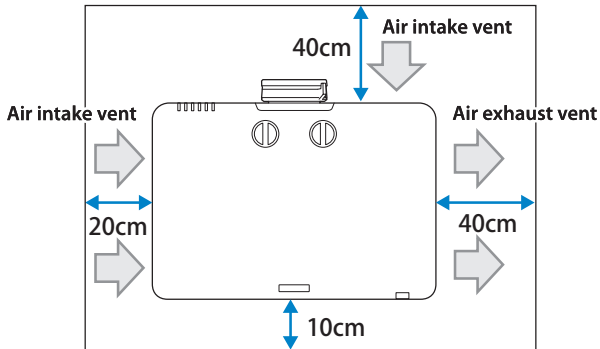


■ Installation Environment

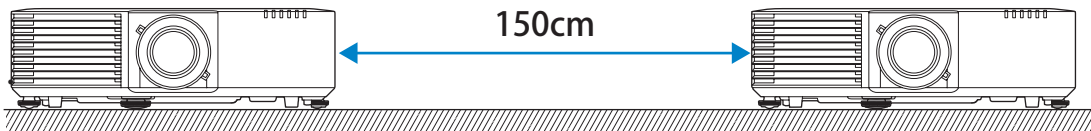
⚠ Warning

Do not cover the projector's air intake or air exhaust vents. If the vents are covered, the internal temperature could rise and cause a fire.

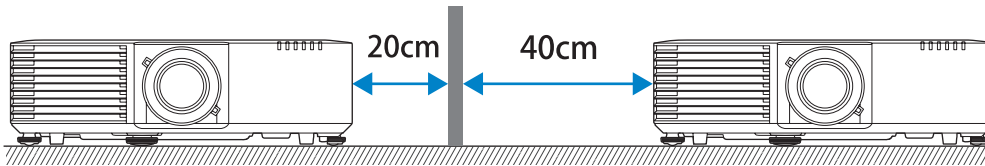
- Be sure to leave the following amount of space around the projector so as not to block the air exhaust and intake vents. Do not install the projector in an enclosed location such as a shelf or box, where air does not circulate.



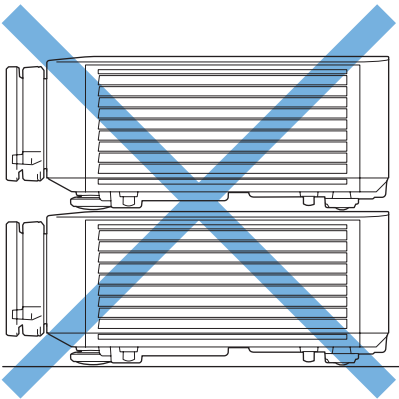
- If you are installing multiple projectors next to each other, make sure hot air from the exhaust vent does not go into the air intake vent of another projector.



- If you use a partition, you can narrow the space between the projectors.



- Do not install multiple projectors in a stacked configuration.



- A special mount is required for portrait projection. Contact a specialist to help you prepare the mount.

■ Monitoring and Control

The projector can be monitored and controlled using the following methods.
For details, see the projector's "User's Guide".

• ESC/VP21 commands

When the projector is connected to a computer with an RS-232C cable, you can control the projector with communication commands. You can control the projector from a computer connected to the optional HDBaseT transmitter with an RS-232C cable.

• Epson Web Control

By using the Web browser of a computer connected to the projector on a network, you can operate the projector or edit your playlists. You can also operate the projector or edit your playlists from a mobile device using the Epson iProjection (iOS/Android) app.

• PJLink commands

PJLink was established by the JBMIA (Japan Business Machine and Information System Industries Association) as a standard protocol for controlling network-compatible projector's as part of their efforts to standardize projector control protocols.

The projector complies with the PJLink Class2 standard established by the JBMIA. From a computer connected to the projector on a network, you can control the projector with PJLink commands.

• Epson Projector Management (Software provided by Epson)

Allows you to control multiple Epson projectors on a network.

You can download Epson Projector Management from the following Web site.

<https://epson.com/>

• Epson Projector Professional Tool (Software provided by Epson)

You can adjust the images projected by the projector and monitor the status of the projector over a network.

You can download Epson Projector Professional Tool from the following Web site.

<https://epson.com/>

• Crestron Connected

This is an integrated control system provided by Crestron. You can monitor and control multiple connected to the network all at once. For more information on Crestron Connected, visit the Crestron website.

<https://epson.com/>

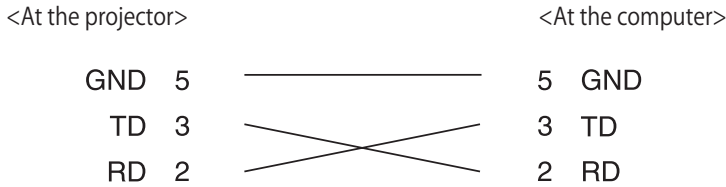
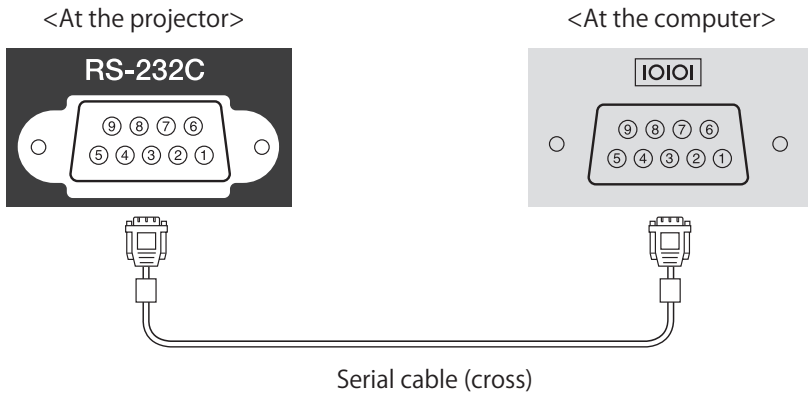
• Web API

You can control the projector by Web API communication using API authentication (Digest authentication).

For details, see the "Web API Specifications for Projectors" on the following website.

<https://support.epson.net/setupnavi/>

Serial Connection



<Serial port specifications>

Connector shape: D-Sub 9-pin (male)

Projector input port name: RS-232C

<Communication specifications>

- Default baud rate setting: 9600 bps
- Data length: 8 bit
- Parity: None
- Stop-bit: 1 bit
- Flow control: None

ESC/VP21 Command List

When the power on command is transmitted to the projector, the power turns on and it enters warm-up mode. When the projector's power has turned on, a colon ":" (3Ah) is returned.

When a command is input, the projector executes the command and returns a ":", and then accepts the next command.

If the command being processed terminates abnormally, an error message is output and a ":" is returned.

Function classification: Start/Stop

Function	Command	Epson Web Control Setting Availability	Setting Value/Response Value
Power on	PWR ON	✓	-
Power off	PWR OFF	✓	-
Power status query	PWR?	✓	-
	Return code		00: Standby condition 01: Normal status 02: Warm-up status 03: Cooling status 04: Network monitoring status /communication standby 05: Error standby status 09: A/V Standby/USB Power Standby

Function classification: Operation

Function	Command	Epson Web Control Setting Availability	Setting Value/Response Value
Key operation	KEY x1	✓	Control panel 01: Power 03: Menu 05: ESC 16: Enter 35: Up 36: Down 37: Left 38: Right 48: SourceSearch 15: A/V Mute Remote control 3B: Power A1: Power ON 6C: Power OFF 3C: Menu 30: Home/Help 3D: ESC 49: Enter 58: Pointer Top 59: Pointer Bottom 5A: Pointer Left 5B: Pointer Right 4A: Auto 43: Comp1(Computer) 67: SourceSearch 4D: HDMI 8A: LAN 85: USB 47: Freeze 28: E-Zoom+ 29: E-Zoom- 3E: A/V Mute(Blank) 3F: Color Mode 20: Aspect 56: Volume+ 57: Volume- 50: EFFECT C8: Keystone 84: User 88: Default 8F: ID A0: Split C6: USB Viewer

Function classification: Projection screen adjustment

Function	Command	Epson Web Control Setting Availability	Setting Value/Response Value
V-Keystone Settings/Acquire settings	VKEYSTONE x1	✓	-
	VKEYSTONE?	✓	-
	Parameter/Return code		0-255 INIT/INC/DEC (settings only)
H-Keystone Settings/Acquire settings	HKEYSTONE x1	✓	-
	HKEYSTONE?	✓	-
	Parameter/Return code		0-255 INIT/INC/DEC (settings only)
V-Balance Settings/Acquire settings	VBALANCE x1	✓	- (except for EB-L720U/EB-L520U)
	VBALANCE?	✓	- (except for EB-L720U/EB-L520U)
	Parameter/Return code		0-255 INIT/INC/DEC (settings only)
H-Balance Settings/Acquire settings	HBALANCE x1	✓	- (except for EB-L720U/EB-L520U)
	HBALANCE?	✓	- (except for EB-L720U/EB-L520U)
	Parameter/Return code		0-255 INIT/INC/DEC (settings only)

Function	Command	Epson Web Control Setting Availability	Setting Value/Response Value
Quick Corner Coordinate Settings/Acquire settings (based on image projection area)	QCS x1 x2 x3 x4 x5 x6 x7 x8	✓	-
	Parameter		x1-x8: 0 to 9999 Specify in the order: top left (x, y), top right (x,y), bottom right (x, y), bottom left (x, y)
	QCS?	✓	-
	Return code		0 to 9999 Coordinates (x, y) for 4 points are divided into 4 lines and responded
Quick Corner Vector Settings	QCV x1 x2 x3 x4 x5 x6 x7 x8	✓	-
	Parameter		x1-x8: 0 to 99 Specify in the order: top left (x, y), top right (x,y), bottom right (x, y), bottom left (x, y)
Quick Corner Coordinate Shift	QCMV control direction movement	✓	-
	Parameter		control: QC control location specifications 01: Top left control 02: Top right control 03: Bottom right control 04: Bottom left control INIT (settings only) direction: Direction specifications 01: Move up 02: Move down 03: Move left 04: Move right movement: Amount of movement specifications Only INC is enabled (settings only)
Keystone/screen correction method settings/acquisition	CORRECTMET x1	✓	-
	CORRECTMET?	✓	-
	Parameter/Return code		00: Off 01: H/V-Keystone 02: Quick Corner correction 03: Point Correction 06: Arc Correction
Geometry Correction Load Memory	POPGC x1	✓	-
	Parameter		01: Memory 1 02: Memory 2 03: Memory 3
Geometry Correction Save Memory	PUSHGC x1	✓	-
	Parameter		01: Memory 1 02: Memory 2 03: Memory 3
Geometry Correction Erase Memory	ERASEGC x1	✓	-
	Parameter		00: ALL (Geometry Correction Reset Memory Settings) 01: Memory 1 02: Memory 2 03: Memory 3
Geometry Correction Rename/Acquire Memory	NAMEGC x1 x2	✓	-
	Parameter		x1 Memory No. 01: Memory 1 02: Memory 2 03: Memory 3 x2 Custom name (ASCII code)
	NAMEGC? x1	✓	-
	Parameter		Same as first parameter for NAMEGC
	Return code		Same as second parameter for NAMEGC

Function	Command	Epson Web Control Setting Availability	Setting Value/Response Value
Aspect settings/Acquire settings	ASPECT x1	✓	-
	ASPECT?	✓	-
	Parameter/Return code		30: Auto 40: Full 50: H-Zoom 60: Native A0: V-Zoom INIT (settings only) When selected <Auto> (acquire only) x1: Mode x2: Auto parameters (fixed at 30)
Screen Type Settings/Acquire settings	SCFORMAT mode param	✓	-
	SCFORMAT? mode	✓	-
	Parameter/Return code		mode: Settings Mode 01: Screen Type Settings 02: Screen Position Settings INIT (settings only) param: Value (mode = 01) 01: 4:3 02: 16:9 03: 16:10 04: 16:6 param: Value (mode = 02) C19 to 000 to 3E7
Brightness Control/Light Source Mode Settings/Acquire settings	LUMINANCE x1	✓	-
	LUMINANCE?	✓	-
	Parameter/Return code		00: Normal 01: Quiet 04: Extended 05: Custom INIT (settings only)
Brightness Level Settings/Acquire settings	LUMLEVEL level	✓	-
	LUMLEVEL?	✓	-
	Parameter/Return code		0-255 INIT/INC/DEC (settings only)
(Brightness) Set/Acquire Constant Brightness	LUMCONST x1 [x2]	✓	-
	LUMCONST?	✓	-
	Parameter/Return code		x1: Constant Brightness 00: Off 01: On INIT (settings only) x2: Brightness Level 0 to 255
Image Shift Settings/Acquire Image Shift	IMGSHIFT x y	✓	- (EB-L630SU/EB-L635SU only)
	IMGSHIFT?	✓	- (EB-L630SU/EB-L635SU only)
	Parameter/Return code		X: Shift position in X direction -2 to 2 y: Shift position in Y direction -2 to 2
Tele Wide Settings/Acquire settings	ZOOM x1	✓	-
	ZOOM?	✓	-
	Parameter/Return code		EB-L635SU/EB-L630SU only: Electronic Tele/Wide 0 to 255 INIT/INC/DEC (settings only) EB-L720U/EB-L520U: E-Zoom (Zoom In/Zoom Out) 0 to 255 INIT/INC/DEC (settings only)

Function	Command	Epson Web Control Setting Availability	Setting Value/Response Value
Overscan Settings/Acquire settings	OVSCAN x1	✓	-
	OVSCAN?	✓	-
	Parameter/Return code		00: Off 02: 4% 04: 8% A0: Auto INIT (settings only)

INC: Increase the setting value/DEC: Decrease the setting value/INIT: Return to defaults

Function classification: Source Select/Signal Status settings

Function	Command	Epson Web Control Setting Availability	Setting Value/Response Value
Source Select/Acquire	SOURCE x1	✓	30: HDMI1 A0: HDMI2 80: HDBaseT 10: Computer1 20: Computer2 52: USB 53: LAN 56: Screen Mirroring1 59: Screen Mirroring2
	SOURCE?	✓	30: HDMI1 A0: HDMI2 80: HDBaseT 10: Computer1 20: Computer2 52: USB 53: LAN 56: Screen Mirroring1 59: Screen Mirroring2
Resolution Settings/Acquire settings	RESOL x1	✓	-
	RESOL?	✓	-
	Parameter/Return code		00 : Auto 01-02, 08-1E, 20-2D: Manual A0: Customized 1 A1: Customized 2 F0: Wide F1: Normal INIT (settings only)
Auto Source Search	AUTOSEARCH x1	✓	-
	AUTOSEARCH?	✓	-
	Parameter/Return code		00: Off 01: On

INC: Increase the setting value/DEC: Decrease the setting value/INIT: Return to defaults

Function classification: Image adjustment

Function	Command	Epson Web Control Setting Availability	Setting Value/Response Value
Brightness Settings/Acquire settings	BRIGHT x1	✓	-
	BRIGHT?	✓	-
	Parameter/Return code		0-255 INIT/INC/DEC (settings only)
Contrast Settings/Acquire settings	CONTRAST x1	✓	-
	CONTRAST?	✓	-
	Parameter/Return code		0-255 INIT/INC/DEC (settings only)
Color Saturation Settings/Acquire settings	DENSITY x1	✓	-
	DENSITY?	✓	-
	Parameter/Return code		0-255 INIT/INC/DEC (settings only)
Tint Settings/Acquire settings	TINT x1	✓	-
	TINT?	✓	-
	Parameter/Return code		0-255 INIT/INC/DEC (settings only)

Function	Command	Epson Web Control Setting Availability	Setting Value/Response Value
Sharpness Settings/Acquire settings	SHARP x1	✓	-
	Parameter		x1: Adjustment value 0-255 INC/DEC/INIT
	SHARP?	✓	-
	Return code		0-255
Color Temp. Settings/Acquire settings	CTEMP x1	✓	-
	CTEMP?	✓	-
	Parameter/Return code		Color Temp. 0-255 INIT/INC/DEC (settings only)
Skin color (G-M Correction) Settings/Acquire settings	FCOLOR x1	✓	-
	FCOLOR?	✓	-
	Parameter/Return code		0-255 INIT/INC/DEC (settings only)
Color Mode Settings/Acquire settings	CMODE x1	✓	-
	CMODE?	✓	-
	Parameter/Return code		01: sRGB 04: Presentation 06: Dynamic 0F: DICOM SIM 15: Cinema 1A: Multi-Projection INIT (settings only)
Horizontal Display Position Settings/Acquire settings	HPOS x1	✓	-
	HPOS?	✓	-
	Parameter/Return code		0-255 INIT/INC/DEC (settings only)
Vertical Display Position Settings/Acquire settings	VPOS x1	✓	-
	VPOS?	✓	-
	Parameter/Return code		0-255 INIT/INC/DEC (settings only)
Tracking Settings/Acquire settings	TRACKING x1	✓	-
	TRACKING?	✓	-
	Parameter/Return code		0-255 INIT/INC/DEC (settings only)
Synchronize Settings/Acquire settings	SYNC x1	✓	-
	SYNC?	✓	-
	Parameter/Return code		0-255 INIT/INC/DEC (settings only)
Noise Reduction Settings/Acquire settings	NRS x1	✓	-
	Parameter		0-255 INIT/INC/DEC
	NRS?	✓	-
	Return code		0-255
MPEG Noise Reduction	MPEGNRS x1	✓	-
	MPEGNRS?	✓	-
	Parameter/Return code		00: Off 01: Low 02: Normal 03: High
Red Offset Settings/Acquire settings Green Offset Settings/Acquire settings Blue Offset Settings/Acquire settings	OFFSETR x1	✓	-
	OFFSETR?	✓	-
	Parameter/Return code		0-255 INIT/INC/DEC (settings only)
	OFFSETG x1	✓	-
	OFFSETG?	✓	-
	Parameter/Return code		0-255 INIT/INC/DEC (settings only)
	OFFSETB x1	✓	-
	OFFSETB?	✓	-
Parameter/Return code		0-255 INIT/INC/DEC (settings only)	

Function	Command	Epson Web Control Setting Availability	Setting Value/Response Value
Red Gain Settings/Acquire settings Green Gain Settings/Acquire settings Blue Gain Settings/Acquire settings	GAINR x1	✓	-
	GAINR?	✓	-
	Parameter/Return code		0-255 INIT/INC/DEC (settings only)
	GAING x1	✓	-
	GAING?	✓	-
	Parameter/Return code		0-255 INIT/INC/DEC (settings only)
	GAINB x1	✓	-
	GAINB?	✓	-
	Parameter/Return code		0-255 INIT/INC/DEC (settings only)
Gamma Settings/Acquire settings	GAMMA x1	✓	-
	GAMMA?	✓	-
	Parameter/Return code		20: Setting 2 21: Setting 1 22: Setting 0 23: Setting -1 24: Setting -2 F0: Custom INIT (settings only)
	Parameter		x1: Color Tone 00-08 Gradient 1 to Gradient 9 x2: Adjustment Number 0-255 INC/ DEC
Gamma Color Tone Settings/ Acquire settings	GAMMALV x1 x2	✓	-
	Parameter		x1: Color Tone 00-08 Gradient 1 to Gradient 9 x2: Adjustment Number 0-255 INC/ DEC
	GAMMALV? x1	✓	-
	Parameter		See the first parameter of the GAMMALV command.
RGBCMY Settings/Acquire settings	Return code		0-255
	AXESADJ x1 x2 x3 x4	✓	-
	Parameter		x1: Color 01: R 02: G 03: B 04: C 05: M 06: Y 90: ALL x2: Hue 0-255 x3: Saturation 0-255 x4: Brightness 0-255 INIT
	AXESADJ?	✓	-
Return code		0-255 Returns the hue, saturation, and brightness of each color in the order R, G, B, C, M, Y.	

Function	Command	Epson Web Control Setting Availability	Setting Value/Response Value
Multi-screen Color Matching Settings/Acquire settings	MULSCR x1 x2 x3	✓	-
	Parameter		x1: Adjustment type 01: Pattern Guide 05: Color Correct R 06: Color Correct G 07: Color Correct B 08: Color Correct (RGB Batch) INIT x2: Level Settings 00: Off (x1 = 01 only) 01 to 08: Level 1 to Level 8 FF: All x3: Adjustment value (except x1 = 01) 0-255 INIT/INC/DEC [x3]: type (except x1 = 01 & x2 = 00) 00: Tone Pattern 01: Blend Pattern
	MULSCR? x1	✓	-
	Parameter		x1: Adjustment type 01: Pattern Guide 05: Color Correct R 06: Color Correct G 07: Color Correct B Return code Responds to the settings or level value for each level of the specified adjustment type. Level value: 00-08 Adjustment value 000-255
Load Memory	POPMEM x1 x2	✓	-
	Parameter		x1 Memory Type 02: Advanced x2 Memory No. 01: Memory 1 (1st) : 0A: Memory 10 (10th)
Save Memory	PUSHMEM x1 x2	✓	-
	Parameter		x1 Memory Type 02: Advanced x2 Memory No. 01: Memory 1 (1st) : 0A: Memory 10 (10th)
Erase Memory	ERASEMEM x1 x2	✓	-
	Parameter		x1 Memory Type 00: ALL 02: Advanced x2 Memory No. 01: Memory 1 (1st) : 0A: Memory 10 (10th)
Acquire color adjustment method settings	CSEL?	✓	-
	Return code		07: RGB/RGBCMY
Image Enhancement Preset Settings/Acquire	IMGPRESET x1	✓	-
	IMGPRESET?	✓	-
	Parameter/Return code		00: Off 01: Preset 1 02: Preset 2 03: Preset 3 04: Preset 4 05: Preset 5 INIT (settings only)
Super-resolution: Fine Line Adjust Settings/Acquire settings	SHRF x1	✓	-
	SHRF?	✓	-
	Parameter/Return code		0-255 INC/DEC/INIT

Function	Command	Epson Web Control Setting Availability	Setting Value/Response Value
Super-resolution:Soft Focus Detail Settings/Acquire settings	SHRS x1	✓	-
	SHRS?	✓	-
	Parameter/Return code		0-255 INC/DEC/INIT
Detail Enhancement: Range Settings/Acquire	DERANGE x1	✓	-
	Parameter		0-255 INC/DEC/INIT
	DERANGE?	✓	-
	Return code		0-255
Detail Enhancement: Strength Settings/Acquire	DESTRENGTH x1	✓	-
	Parameter		0-255 INC/DEC/INIT
	DESTRENGTH?	✓	-
	Return code		0-255
Scene Adaptive Gamma Settings/Acquire settings	SCENEGAMMA x1	✓	-
	SCENEGAMMA?	✓	-
	Parameter/Return code		0-255 INIT/INC/DEC (settings only)

INC: Increase the setting value/DEC: Decrease the setting value/INIT: Return to defaults

Function classification: Audio

Function	Command	Epson Web Control Setting Availability	Setting Value/Response Value
Volume Settings/Acquire settings	VOL x1	✓	-
	VOL?	✓	-
	Parameter/Return code		0-255 INIT/INC/DEC (settings only)
Audio Output Signal Settings/Acquire settings	AUDIO mode [source]	✓	-
	Parameter/Return code		Audio Settings (Determined by omitting source parameters) mode: Display Settings 00: Auto 01: Audio1 02: Audio2 INIT (settings only) HDMI Audio Output mode: Display Settings 00: Default (HDMI) 01: Audio1 02: Audio2 INIT (settings only) source: Target source 30: HDMI1 A0: HDMI2
	AUDIO? [source]	✓	-
	Parameter		See source parameters for AUDIO command
	Return code		See mode parameters for AUDIO command
	A/V Settings/Acquire settings	AVOUT x1	✓
AVOUT?		✓	-
Parameter/Return code		00: While Projecting (NW Standby) 01: Always On (AV Standby) INIT (settings only)	

INC: Increase the setting value/DEC: Decrease the setting value/INIT: Return to defaults

Function classification: Additional functions

Function	Command	Epson Web Control Setting Availability	Setting Value/Response Value
Execute or Release A/V Mute/ Acquire status	MUTE x1	✓	-
	MUTE?	✓	-
	Parameter/Return code		ON: Execute A/V Mute OFF: Release A/V Mute INIT(settings only)
Execute or Release Freeze/ Acquire status	FREEZE x1	✓	-
	FREEZE?	✓	-
	Parameter/Return code		ON: Execute Freeze OFF: Release Freeze INIT(settings only)

INC: Increase the setting value/DEC: Decrease the setting value/INIT: Return to defaults

Function classification: Configuration

Function	Command	Epson Web Control Setting Availability	Setting Value/Response Value
Horizontal Reverse Settings/ Acquire settings	HREVERSE x1	✓	-
	HREVERSE?	✓	-
	Parameter/Return code		ON: Horizontal Reverse status OFF: Normal INIT (settings only)
Vertical Reverse Settings/ Acquire settings	VREVERSE x1	✓	-
	VREVERSE?	✓	-
	Parameter/Return code		ON: Vertical Reverse status OFF: Normal INIT (settings only)
Reset All Config	INITALL2 x1	✓	-
	Parameter/Return code		x1: Reset target (Hex) bit 15: Reserved bit 14: Reserved bit 13: Reserved bit 12: Reserved bit 11: Reserved bit 10: Memory bit 9: Multi-Projection bit 8: Reserved bit 7: Reserved bit 6: Network bit 5: Management bit 4: Operation bit 3: Display bit 2: Installation bit 1: Signal I/O bit 0: Image Set as 0: Do not Reset Set as 1: Reset *This command is defined by bit assignment.
Communication Speed Settings/Acquire settings	SPEED x1	-	-
	Parameter		00: 9600bps 01: 19200bps 02: 38400bps 03: 57600bps INIT
	SPEED?	-	-
	Return code		00: 9600bps 01: 19200bps 02: 38400bps 03: 57600bps
Projector ID Settings/Acquire settings Base Unit ID Settings/Acquire settings	PROJID x1	✓	-
	PROJID?	✓	-
	Parameter/Return code		00: Off 01-09: ID1-ID9 INIT (settings only)

Function	Command	Epson Web Control Setting Availability	Setting Value/Response Value
Air Filter Notice Settings/Acquire settings	FLCLENOT x1	✓	-
	FLCLENOT?	✓	-
	Parameter/Return code		00: No Air Filter Notice 01: Use Air Filter Notice INIT (settings only)
Illumination/ Indicator Settings	ILLUM x1	✓	-
	ILLUM?	✓	-
	Parameter/Return code		00: Off 01: On INIT (settings only)
Inv Direction Button Settings/Acquire settings	KREVERSE x1	✓	-
	KREVERSE?	✓	-
	Parameter/Return code		10: Release the projector's Inv Direction Button and turn off the setting 11: Execute the projector's Inv Direction Button and turn on the setting INIT (settings only)
On Screen Settings	ONSCREEN x1	✓	-
	ONSCREEN?	✓	-
	Parameter/Return code		00: Off (do not display the OSD) 01: On (display the OSD)
OSD Rotation Settings	OSDROTATE x1	✓	-
	OSDROTATE?	✓	-
	Parameter/Return code		00: Off 01: Right 90 Degree 02: Left 90 Degree
HDBaseT Settings/Acquire settings	HDBASET mode	✓	-
	HDBASET?	✓	-
	Parameter/Return code		00: Off 01: On INIT (settings only)
Startup Source Settings/Acquire settings	STSOURCE mode	✓	-
	STSOURCE?	✓	-
	Parameter/Return code		00: Last Source 10: Computer1 30: HDMI1 52: USB 53: LAN 80: HDBaseT A0: HDMI2
Quick Startup Mode Settings/Acquire	FASTBOOT x1	✓	-
	FASTBOOT?	✓	-
	Parameter/Return code		00: Off 01: 20 min. 02: 60 min. 03: 90 min.
Refresh Mode Settings/Acquire	REFRESHTIME x1	✓	-
	REFRESHTIME?	✓	-
	Parameter/Return code		01: 1 hour 0D: 13 hours 02: 2 hours 0E: 14 hours 03: 3 hours 0F: 15 hours 04: 4 hours 10: 16 hours 05: 5 hours 11: 17 hours 06: 6 hours 12: 18 hours 07: 7 hours 13: 19 hours 08: 8 hours 14: 20 hours 09: 9 hours 15: 21 hours 0A: 10 hours 16: 22 hours 0B: 11 hours 17: 23 hours 0C: 12 hours 18: 24 hours
Refresh Mode Start	REFRESH	✓	-
Refresh Mode Executing Messages Settings/Acquire	REFRESHMSG x1	✓	-
	REFRESHMSG?	✓	-
	Parameter/Return code		00: Hide Messages 01: Messages

Function	Command	Epson Web Control Setting Availability	Setting Value/Response Value
Batch Setup Range Settings/Acquire	BARANGE x1	✓	-
	BARANGE?	✓	-
	Parameter/Return code		00: All 01: Limited
Light Source Calibration Start (Run Now)	LTCALB	✓	-
Auto Light Source Calibration Settings/Acquire (Run Periodically)	AUTOLTCALB x1	✓	-
	AUTOLTCALB?	✓	-
	Parameter/Return code		00: Off 01: On (Run Periodically)
Light Source Calibration Last Run Acquire	LASTLTCALB?	✓	-
	Return code		yyyyMMddHHmm (Year, Month, Date, Hour, Minute) 2000 to 2099: yyyy 01 to 12: MM 01 to 31: dd 00 to 23: HH 00 to 59: mm
USB Power in Standby Settings/Acquire settings USB Power Settings/Acquire settings	USBSUPPLY x1	✓	- (except for EB-L720U/EB-L520U)
	USBSUPPLY?	✓	- (except for EB-L720U/EB-L520U)
	Parameter/Return code		00: On when projecting 01: Always On
HDMI Out Setting/Acquire settings	HDMIOUT x1 x2	✓	- (except for EB-L720U/EB-L520U)
	HDMIOUT? x1	✓	- (except for EB-L720U/EB-L520U)
	Parameter/Return code		x1 = Setting function 00: HDMI Out Setting 01: Number of Projectors 02: Order x2 = Value HDMI Out Setting (x1 = 00) 00: Off 01: On (Pass Through) Number of Projectors (x1 = 01) 02: 2 03: 3 04: 4 Order (x1 = 02) 01: 1 02: 2 03: 3 04: 4
Menu Color Settings/Acquire settings	MENUCOLOR x1	✓	-
	MENUCOLOR?	✓	-
	Parameter/Return code		00: Black 01: White NIT (settings only)
Transmitter Connection Guide Display Settings/Acquire settings	TRNSGUIDE x1	✓	-
	TRNSGUIDE?	✓	-
	Parameter/Return code		00: Off (do not display) 01: On (display) INIT (settings only)
Transmitter Auto Power On Settings/Acquire settings	TRNSPWON x1	✓	-
	TRNSPWON?	✓	-
	Parameter/Return code		00: Off 01: On INIT (settings only)

INC: Increase the setting value/DEC: Decrease the setting value/INIT: Return to defaults

Function classification: Home Screen

Function	Command	Epson Web Control Setting Availability	Setting Value/Response Value
Home Screen Auto Disp.	AUTOHOME x1	✓	-
	AUTOHOME?	✓	-
	Parameter/Return code		00: Off (do not display automatically) 01: On (display automatically)
Home Screen Sort Source Thumbnails	HSORT x1	✓	-
	HSORT?	✓	-
	Parameter/Return code		00: Off 01: On INIT (settings only)

INC: Increase the setting value/DEC: Decrease the setting value/INIT: Return to defaults

Function classification: Network

Function	Command	Epson Web Control Setting Availability	Setting Value/Response Value
AMX DDDP BeaconMessage Acquire	AMX	-	-
	Return code		*The response format follows the AMX specifications. AMXB<-SDKClass=VideoProjector> <-GUID=EPSON_EMP001><-Revision=1.0.0>
AMX DDDP IP BeaconMessage Status settings/Acquire status	AMXDDDP x1	✓	-
	AMXDDDP?	✓	-
	Parameter/Return code		00: Stop sending BeaconMessage 01: Start sending BeaconMessage INIT (settings only)
Extron XTP Settings/Acquire	XTP x1	✓	-
	XTP?	✓	-
	Parameter/Return code		00: Off 01: On
Wireless Mode	WLPWR x1	✓	-
	WLPWR?	✓	-
	Parameter/Return code		00: Off 01: Wireless LAN On

INC: Increase the setting value/DEC: Decrease the setting value/INIT: Return to defaults

Function classification: Screen Mirroring

Function	Command	Epson Web Control Setting Availability	Setting Value/Response Value
Screen Mirroring (WFD Power) Settings/Acquire	WDPWR x1	✓	-
	WDPWR?	✓	-
	Parameter/Return code		00: Off 01: On
WFD Performance Adjustment Settings/Acquire	WDPERF x1	✓	-
	WDPERF?	✓	-
	Parameter/Return code		01: Setting 1 (Fine) 02: Setting 2 03: Setting 3 04: Setting 4 (Fast)
Reflect WFD Settings	WDRESET	✓	-
WFD Interrupt Projection Settings/Acquire	WDINTRPT x1	✓	-
	WDINTRPT?	✓	-
	Parameter/Return code		00: Off 01: On
WFD Information Bar Display Settings/Acquire	WDINFOBAR x1	✓	-
	WDINFOBAR?	✓	-
	Parameter/Return code		00: Off 01: On

INC: Increase the setting value/DEC: Decrease the setting value/INIT: Return to defaults

Function classification: Provide Information

Function	Command	Epson Web Control Setting Availability	Setting Value/Response Value
Acquire Lamp Hours	LAMP?	✓	-
	Return code		LAMP=x1 x1: Lamp (Laser) On Hours
Acquire Operation Hours	ONTIME?	✓	-
	Return code		ONTIME=x1 x1: Operation Hours
Acquire Signal Status	SIGNAL?	✓	-
	Return code		00: No signal 01: Signal FF: Unsupported signal
Acquire Source List Information	SOURCELIST?	✓	-
	Return code		30: HDMI1 A0: HDMI2 80: HDBaseT 10: Computer1 20: Computer2 52: USB 53: LAN 56: Screen Mirroring1 59: Screen Mirroring2
Acquire Source List Information (All sources)	SOURCELISTA?	✓	-
	Return code		30: HDMI1 A0: HDMI2 80: HDBaseT 10: Computer1 20: Computer2 52: USB 53: LAN 56: Screen Mirroring1 59: Screen Mirroring2
Log Save Destination	LOGTO x1	✓	-
	LOGTO?	✓	-
	Parameter/Return code		00: Internal memory 01: USB and internal memory

INC: Increase the setting value/DEC: Decrease the setting value/INIT: Return to defaults

PJLink Command List

See the following for more information on controlling the projector from a computer using PJLink protocols.

Function	Command	Setting Value/ Response Value	Content	Notes	
Power control instruction	POWR	0	Power-off (Standby)		
		1	Power-on (Light source on)		
Power status query	POWR ?	0	Power-off (Standby)		
		1	Power-on (Light source on)		
		2	Cooling status		
		3	Warm-up status		
Input switch instruction Input source query	INPT INPT ?	11	Computer		
		12	Computer2		
		32	HDMI1		
		33	HDMI2		
		41	USB		
		52	LAN		
		56	HDBaseT		
		57	Screen Mirroring1		
Input toggling list query	INST ?	11	Computer	Displays a list of the available input sources of the projector.	
		12	Computer2		
		32	HDMI1		
		33	HDMI2		
		41	USB		
		52	LAN		
		56	HDBaseT		
		57	Screen Mirroring1		
Error status query	ERST ?	First character	2	Fan Error	"0" is displayed when no error has occurred.
		Second character	2	Laser error Laser on error	
		Third character	1	High Temp Warning	
		Fourth character	2	Temperature error	
		Fourth character	0	Cover open (Does not apply to model being used.)	
		Fifth character	1	No air filter warning	
		Fifth character	2	Filter warning Filter error	
		Sixth character	1	Other warnings	
Sixth character	2	Other errors			
A/V Mute Settings	AVMT	30	A/V mute off	Does not support video mute off/on (10/11) or audio mute off/on (20/21).	
A/V Mute status query	AVMT ?	31	A/V mute on		
Number of light source operating hours, light source status query	LAMP ?	First number (1 to 5)	0 to 99999	Laser operation hours	
		Second number	0	Laser off	
		Second number	1	Laser on	
Projector name query	NAME ?	-	Projector Name	* Displays the name set in [Network] - [Network settings] - [Projector Name] in the projector's menu.	
Manufacture name information query	INF1 ?	EPSON	Manufacture name		
Model name information query	INF2 ?	EPSON L735U/L730U	EB-L735U/EB-L730U		
		EPSON L720U	EB-L720U		
		EPSON L635SU/L630SU	EB-L635SU/EB-L630SU		
		EPSON L630U	EB-L630U		
		EPSON L530U	EB-L530U		
EPSON L520U	EB-L520U				
Class information query	CLSS ?	2	Class information		
Serial number query	SNUM ?	11 digit numbers	Serial number of projector being used		

Function	Command	Setting Value/ Response Value	Content	Notes
Software version query	SVER ?	-	Firmware version of projector being used	
Input port name query	INNMM ?xx	(Source name)		xx is a 2 digit number used in the input toggling list query.
Input signal resolution query	IRES ?	(Horizontal resolution) x (Vertical resolution)		
Panel resolution query	RRES ?	(Horizontal resolution) x (Vertical resolution)	Panel resolution of your projector	The value may vary depending on the [Screen Type] setting in the projector's menu.
Filter operation hours query	FILT ?	0		
Filter replacement model query	RFIL ?	ELPAF56	Air filter model of your projector	
Speaker volume	SVOL	0	Lowers the volume by 1 level.	
		1	Increases the volume by 1 level.	
Static function setting	FREZ	0	Release Freeze	
Static status query	FREZ ?	1	Enable Freeze	

- The password for PJLink is set in [Network] - [Network Settings] - [Projector Control] - [PJLink Password] from the projector's menu. If you do not want to use a password, leave [PJLink Password] blank.
- PJLink is a trademark applied for registration or is already registered in Japan, the United States of America and other countries and areas.

■ Image Quality Maintenance

Clearing Afterimages (Refresh Mode)

If you project still images for an extended period of time, an afterimage may remain in the projected image. Use the Refresh Mode feature to clear it.

To use the effect functions, make sure you perform Refresh Mode regularly.

To perform refresh mode, select [Refresh Mode] from the projector's [Management] menu. After performing Refresh Mode, the power turns off after a set time has passed.

If the afterimage remains after performing Refresh Mode, contact Epson for help.

Adjusting Color Balance (Light Source Calibration)

By performing light source calibration, the difference between the white balance and the brightness level for the light source is corrected.

We recommend performing light source calibration periodically.

To perform light source calibration, select [Light Source Calibration] from the projector's [Management] menu. Select one of the following [Light Source Calibration] options.

Projection is temporarily interrupted while light source calibration is being performed.

- [Run Now]
Starts light source calibration immediately. You may not be able to start the calibration in the following situations.
 - Within 20 minutes of turning on the projector.
 - When the environmental temperature is high and the brightness of the light source is automatically reduced.
- [Run Periodically]
Set to [On] to perform light source calibration periodically every 100 hours of usage.
Set to [Off] to prevent light source calibration from starting unexpectedly while projecting images.
Set to [Off] to maintain the projected image that was adjusted using multi-projection.
Light source calibration will not start automatically in the following cases:
 - Within 20 minutes of turning on the projector.
 - When the environmental temperature is high and the brightness of the light source is automatically reduced.
 - When using direct shutdown
 - When the projector has been in use for more than 24 hours
- [Last Run]
Displays the last date and time when light source calibration was performed.

■ Cautions

1. The copyright for this guide is owned by the Seiko Epson Corporation. No part of this document may be reproduced, stored in a retrieval system, or transmitted in any form or by any means, electronic, mechanical, photocopying, recording, or otherwise, without the prior written permission of Seiko Epson Corporation.
2. This guide is only to be used as instruction guide for projector products.

■ Disclaimer

1. The contents of this document are subject to change without notice.
2. While every precaution has been taken in the preparation of this document, Seiko Epson Corporation assumes no responsibility for errors or omissions. Neither is any liability assumed for damages resulting from the use of the information contained herein.
3. Responsibility for use of this guide lies with the user. Seiko Epson Corporation shall not be liable to the purchaser of this guide or third parties for damages, losses, costs, or expenses incurred by the purchaser or third parties as a result of use of this guide.

EPSON[®]
EXCEED YOUR VISION