

UNIMOUSE

Wireless

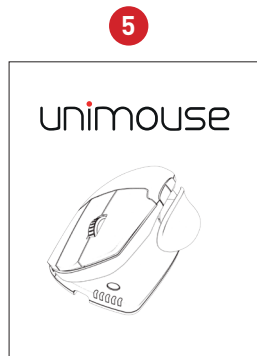
Product Manual



contour 

Box Contents

1. Unimouse
2. Dongle (Wireless receiver)
3. USB 2.0 cable adapter
4. USB to Micro USB cable
5. User Guide



Unimouse Functions



For additional mouse features and specific Mac settings, please download our driver at support.contourdesign.com

* See page 4

Power Switch

The power switch can be found on the underside of the Unimouse. Make sure the power switch is set to ON before pairing with your computer. Turning off the device is only necessary for permanent storage or during travel.



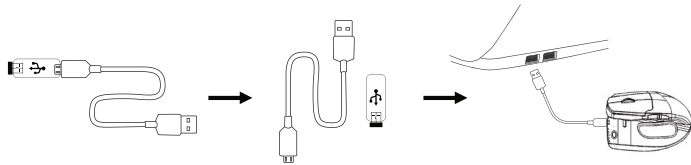
Connecting to a Computer

Plug the wireless receiver or the charging cable into the computer's USB port. Allow your computer a few seconds to automatically install.



Charging

To charge your Unimouse remove the dongle from the extender cable and plug the Micro USB into the Unimouse. Your Unimouse will charge in 2 hours and you may continue to use your Unimouse while it charges.



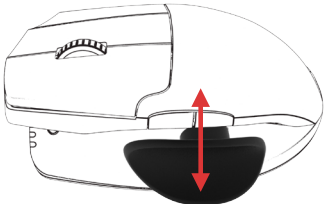
Scroll Lock to Double Click

To change the Scroll lock function to Double click, hold down the cursor speed button and the middle click at the same time. To switch back, repeat the same command. *By default, Middle click is set to scroll lock

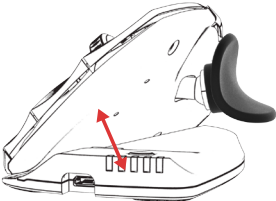


Adjustable Features

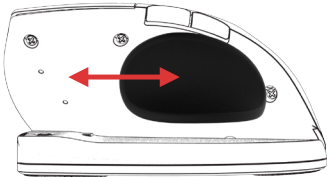
Adjust thumb rest in and out to accommodate hand size



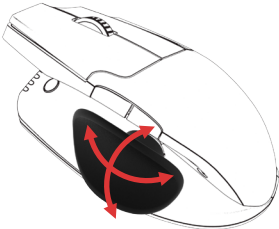
Adjust tilt for desired angle



Slide thumb rest side to side to accommodate thumb length



Thumb rest can pivot to optimal position



Pairing

With the Unimouse in close proximity to the dongle, hold left click, right click and the cursor speed buttons at the same time until the LED indicator turns green.



Battery level

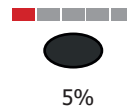
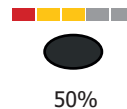
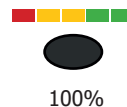
Unimouse has a built-in rechargeable battery. To see the battery level on your device, press the Cursor Speed button once. The Unimouse will first display the current DPI level, then display the current battery level.

(Red, Orange, Green.)

If your Unimouse is running low on battery, the center LED light will start blinking in red.

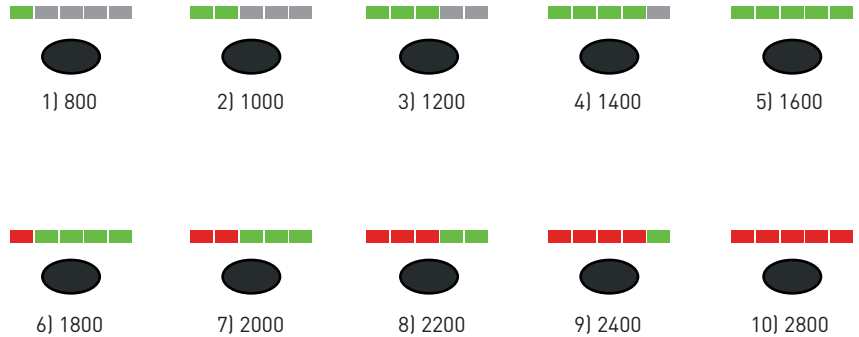
To charge your battery, plug the charging cable into your Unimouse and connect it to a USB port on your computer. (see page 4)

Unimouse has an expected battery life of up to 3 months with average daily use.



Change cursor speed

Press the Cursor Speed button to cycle through cursor speeds. There are ten speed selections ranging from slow (800 DPI) to fast (2800 DPI). Speed is indicated by the LED lights as shown.



For more information please visit:
www.contourdesign.com

Contour Design, Inc.
10 Industrial Drive
Windham, New Hampshire 03087, USA
Phone: (603) 893-4556
Email: ergoinfo@contourdesign.com

Contour Design Nordic A/S
International House
Center Boulevard 5
2300 Copenhagen S. Denmark
Phone: +45 32 46 11 20
Email: info@contour-design.com

Tested to comply with FCC
and IC standards



FCC Statement

Changes or modifications not expressly approved by the party responsible for compliance could void the user's authority to operate the equipment.

This equipment has been tested and found to comply with the limits for a Class B digital device, pursuant to Part 15 of the FCC Rules. These limits are designed to provide reasonable protection against harmful interference in a residential installation. This equipment generates uses and can radiate radio frequency energy and, if not installed and used in accordance with the instructions, may cause harmful interference to radio communications. However, there is no guarantee that interference will not occur in a particular installation. If this equipment does cause harmful interference to radio or television reception, which can be determined by turning the equipment off and on, the user is encouraged to try to correct the interference by one or more of the following measures:

- Reorient or relocate the receiving antenna.
- Increase the separation between the equipment and receiver.
- Connect the equipment into an outlet on a circuit different from that to which the receiver is connected.
- Consult the dealer or an experienced radio/TV technician for help.

This device complies with part 15 of the FCC rules. Operation is subject to the following two conditions (1) this device may not cause harmful interference, and (2) this device must accept any interference received, including interference that may cause undesired operation.

IC Statement

This device complies with Industry Canada's licence-exempt RSSs. Operation is subject to the following two conditions:

- (1) This device may not cause interference; and
- (2) This device must accept any interference, including interference that may cause undesired operation of the device.

The term "IC:" before the certification/registration number only signifies that the Industry Canada technical specifications were met. This product meets the applicable Industry Canada technical specifications.

Le présent appareil est conforme aux CNR d'Industrie Canada applicable aux appareils radio exempts de licence. L'exploitation est autorisée aux deux conditions suivantes : (1) l'appareil ne doit pas produire de brouillage, et (2) l'utilisateur de l'appareil doit accepter tout brouillage radioélectrique subi, même si le brouillage est susceptible d'en compromettre le fonctionnement

Warranty

If there is a functional defect due to faulty manufacturing, we will replace the product. This warranty does not cover damage that results from misuse of the product.

Attention!

If you attempt to dismantle your Unimouse, you will invalidate your warranty.

contour 