

# ZYXEL



## LTE7480-M804

### 4G LTE-A Outdoor Router

Fixed Wireless Access (FWA) is an alternative means to provide Internet connectivity that utilizes wireless network technology rather than fixed lines. With a fixed wireless access offering, network operators can supply a vast amount of new customers with broadband Internet connectivity. By delivering broadband over LTE mobile networks, operators can rapidly increase revenue from the untapped markets.

The Zyxel LTE7480-M804 4G LTE-A Outdoor Router supports a routing mode with both bridge and router functions, high-gain antenna for better signal performance and robust IP67 outdoor hardware designed for harsh environments – all the necessary features that benefit the critical “second WAN” design. No matter you have a router or not, the LTE7480-M804 can be easily deployed and integrated into your existing environment.

You can set 4G LTE as your main connection or use it as a backup in case performance of the main connection drops. The Zyxel LTE7480-M804 is good for any venue like suburban areas, public locations, homes and offices. Enjoy 4G LTE-Advanced technology effortlessly with the LTE7480-M804.



Download speeds of up to 600 Mbps, UE Cat. 12



Built-in 4x4 MIMO, high-gain antenna of up to 7 dBi per element



Standard 802.3af/at PoE



IP67 hardened enclosure with industrial grade components



Embedded bridge/router mode



Remote throughput testing



Remote management

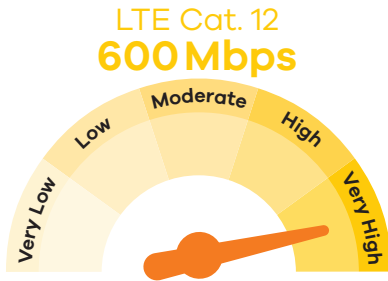


LTE Ally app for iOS & Android

## Benefits

### Lightning-fast Internet connectivity

The Zyxel LTE7480-M804 4G LTE-A Outdoor Router employs 3GPP UE downlink Category 12 – the best-practice LTE technology with downlink data rates of up to 600 Mbps through 4 Spatial Streams on two component carriers.



### Built-In 4x4 MIMO high-gain antenna

The Zyxel LTE7480-M804 4G LTE-A Outdoor Router provides 4x4 MIMO high-gain antennas of up to 7 dBi per element that work effectively in outdoor environments. The outdoor design enables it to work under near non-line-of-sight conditions to increase coverage and bandwidth as well as to eliminate edge corners having difficulty accessing good signals.



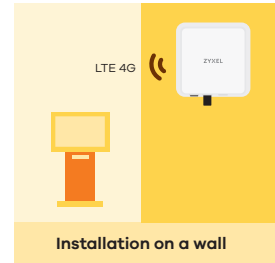
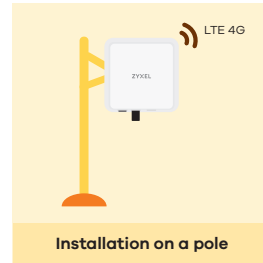
### Environmentally-hardened

Stronger waterproof protection guarantees high-quality connections and a longer device life despite weather and natural adversaries. It also elevates customer satisfaction thanks to the easy installation procedure since it's not necessary to find a spot with lower humidity.



### Easy installation

Easy installation is realized with flexible wall or pole mounting kit, indoor stand for the window side (optional), integrated IEEE 802.3af/at PoE support, dedicated WiFi AP with mobile apps content graphics for Donor eNB alignment.



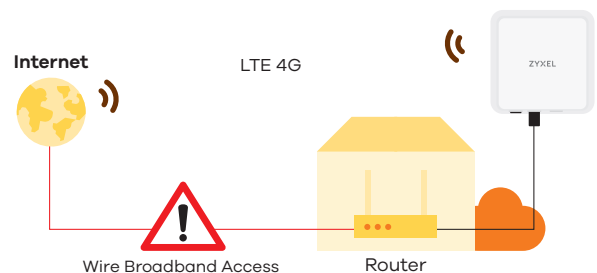
### Remote management, TR-069, HTTP/Web GUI and FTP

Through the LTE radio interface, the Zyxel LTE7480-M804 supports TR-069, remote GUI and FTP to be fully configurable and software upgradeable through events triggered by the operators. Thanks to remote throughput testing, the trouble shooting can be performed locally or remotely with better efficiency.



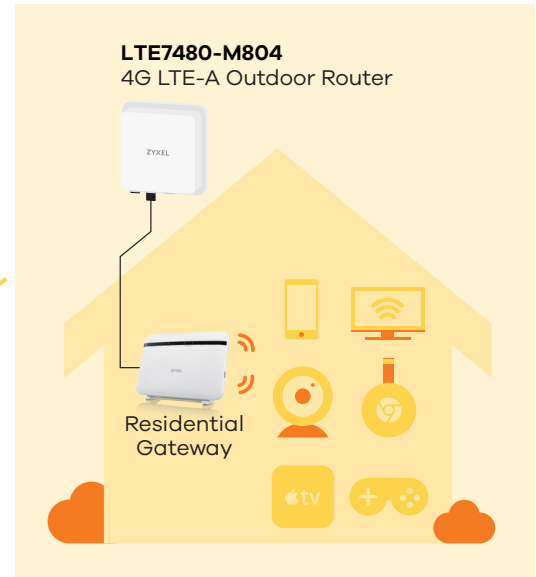
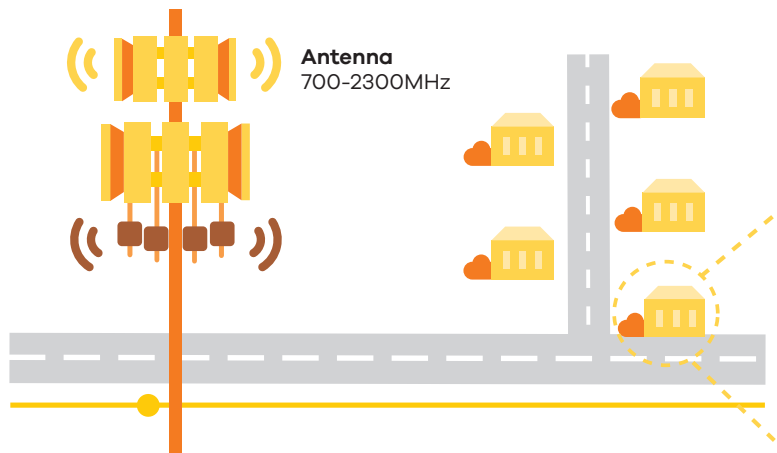
### Non-stop connectivity with LTE 2nd WAN for fail-over

Multi-WAN fail-over relieves the risk of network outage due to the dependence on single WAN connection. Even better, the wireless LTE allows you to take advantage of the 2nd WAN without a cabling plan. As long as the gateway supports "multi-WAN fail-over", you can just connect Zyxel LTE7480-M804 to the existing gateway and set LTE as the fail-over WAN.

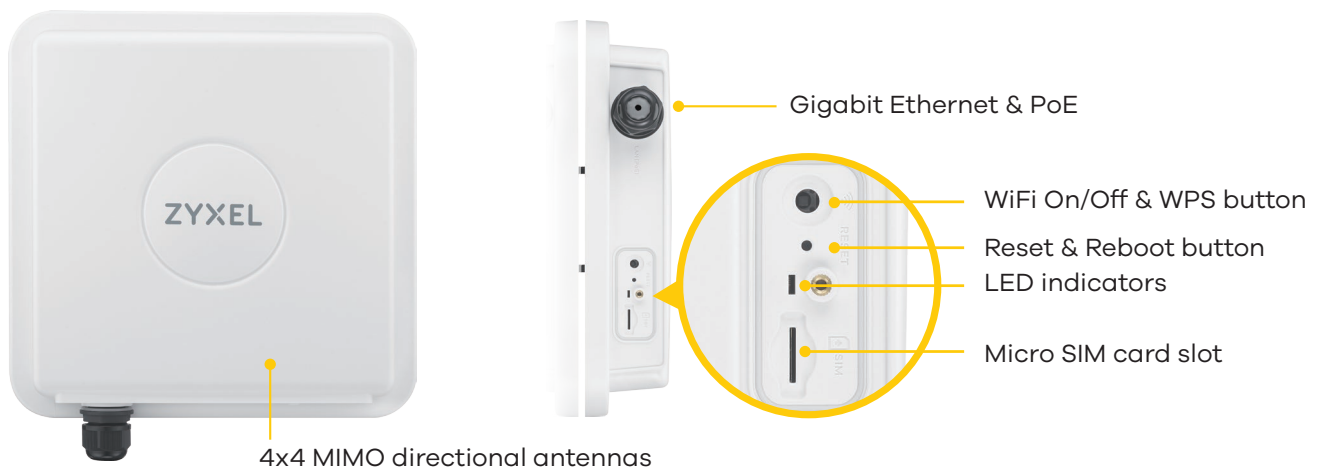


# FWA Application Diagram for Outdoor LTE CPE

Replacing the last mile with shared spectrum at suburban and rural area



## Interface description



# Specifications

## System Specifications

### IP Networking

- Support IPv4/IPv6 dual stack (NDP IPv6)
- DHCP server
- ICMP supported
- Virtual Private Network (VPN) pass through
- Roaming management
- Support NAT/NAPT
- Support NAT DMZ
- Support port forwarding/trigging
- Support ALG

### Routing

- Support router mode
- Support bridge (IP pass through) mode
- Support dynamic DNS for first APN
- Support remote management under bridge mode

### IP Firewall

- Firewall can be enabled or disabled via GUI
- DoS attack prevention
- Support SPI
- Application-level firewall
- Filters LAN MAC address
- Filters LAN IP address
- Filters URLs

### Management

- Support local/remote device management and firmware upgrade via TR-069, HTTP/Web GUI and FTP
- APN management
- Account management
- PIN/PUK management
- Network selection
- Network preference
- Operating frequency band selection
- CLI/SSH (local and remote SSH access)
- Support UPNP IGD
- Support SSH with key access certification management
- Support bandwidth/quota management
- Support mobile apps (iOS and Android) for easy installation and local management only

- Support remote throughput testing by TR143
- WiFi Protected Setup (WPS)
- Hidden SSID

## Hardware Specifications

### LTE Interface

- Standard compliant: 3GPP UE Category 12
- Support LTE bands : 1/3/5/7/8/20/28/32/38/40/41
- Support DL TM1/2/3/4/7/8/9
- LTE Antennas: 4 embedded directional antennas of up to 7 dBi/element (4x4 MIMO)
- Support DL 2CC, 4x4 MIMO, 4 spatial streams
- Support DL modulation QPSK, 16-QAM, 64-QAM and 256-QAM
- Support UL modulation QPSK, 16-QAM and 64-QAM
  - Support DL speed of up to 600 Mbps support UL speed of up to 100 Mbps

### WiFi Interface

- Wireless standard: 802.11 b/g/n, 2.4 GHz, 300 Mbps.
- Wireless omni antennas: WiFi 2.4 GHz: 2x2 internal antennas up to 3 dBi

### Hardware Interface

- One GbE RJ-45 PoE LAN port
- One LED indicator for:
  - Power status
  - Internet status
  - LTE signal strength
  - WiFi status
  - LAN status
- One WiFi On/Off button
- One 3FF mini SIM card socket
- One reset to default button

### Power Specifications

- Standard 802.3af/at PoE

## Power Consumption

- 16 watt (peak)

## Physical Specifications

- Dimension (WxDxH): 254 x 255 x 58 mm (9.99" x 10.03" x 2.28")
- Weight: 1100 g (2.43 lb.)

## Environmental Specifications

### Ingress Protection Rating

- IP67 harden for outdoor environments

### Lightning Protection

- K.21 enhance mode, 6 KV

### Operating Environment

- Temperature: -40°C to 60°C (-40°F to 140°F)
- Humidity: 5% to 95% (non-condensing)

### Storage Environment

- Temperature: -40°C to 70°C (-40°F to 158°F)
- Humidity: 5% to 95% (non-condensing)

## Certification

- CE
- WEEE
- 2011/65/EC Restriction of Hazardous Substances directive (RoHS)
- Hazardous Substance Free (HSF)
- European parliament and council directive 94/62/EC of 20 December 1994 on packaging and packaging waste

## Package Contents

- Standard 802.3af/at POE
- 1.8 M Ethernet cable yellow 8P8C
- Power cord
- 1 M grounding kit
- PG19 thread (cable grand)
- Quick start guide
- Warranty card
- DoC and safety warning
- Wall/pole mounting kit
- Stand (optional)

For more product information, visit us on the web at [www.zyxel.com](http://www.zyxel.com)

Copyright © 2019 Zyxel Communications Corp. All rights reserved. Zyxel, Zyxel logo are registered trademarks of Zyxel Communications Corp. All other brands, product names, or trademarks mentioned are the property of their respective owners. All specifications are subject to change without notice.

Datasheet [LTE7480-M804](#)



5-100-01419008 06/19