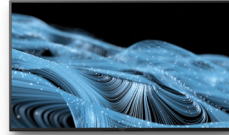


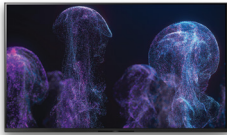
Inspire imagination

Bring collaboration to life with BRAVIA Professional Displays



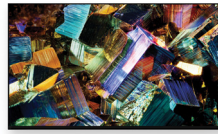


	FW-32BZ30J	FW-43BZ30J	FW-50BZ30J	FW-55BZ30J	FW-65BZ30J	FW-75BZ30J	
General features	Screen Size	80 cm	108 cm	126 cm	139 cm	164 cm	189 cm
	Brightness (cd/m ²)	300			440		
	Native contrast ratio	3000:1	1200:1	5000:1		1200:1	
	Dynamic contrast ratio	260000:1	400000:1			300000:1	
	Response Time (ms)	10		9	10		11
	Display resolution (H x V, pixels)	3840x2160					
	HDR (High Dynamic Range) compatibility	Yes (HDR10,HLG,Dolby Vision)					
	Aspect Ratio	16:9					
	Portrait Compatibility	Yes					
Display features	Dimming type	Frame Dimming					
	Display device	LCD					
	Backlight type	Edge LED	Direct LED				
	4K Processor	X1 4K HDR Processor					
Operation time	24/7					24/7	
Video Specs	Wide Mode	Wide zoom / Normal / Full / Zoom / 14:9					
	4:3 Default	Yes					
	Video Processing	4K X-Reality PRO					
	TRILUMINOS Display	Yes					
	Viewing Angle (Right/Left/Up/Down)	178(89/89) degree					
HDMI Signal	4096x2160p(24,50,60Hz), 3840x2160p(24,25,30,50,60Hz), 1080p(30,50,60Hz), 1080/24p, 1080i(50,60Hz), 720p(30,50,60Hz), 720/24p, 576p, 480p						
Audio Specs	Speaker Position	Down Firing					
	Audio Power Output	5W + 5W	10W + 10W				
Professional features	Professional Hidden mode	Yes					
	HDMI auto wake-up	Yes					
	Compatible with TDM Digital Signage	Yes					
	HTML5 platform	Yes					
	Multicast/IPTV	Yes					
	Operating System	Android 10					
Network Specs	On-board Storage (GB)	16GB					
	Wi-Fi Direct	Yes					
	Wi-Fi Certified	Yes					
	Wireless LAN	Integrated					
Security 802.1X	Yes						
Convenience features	USB playback codecs	MPEG1/MPEG1/2PS/MPEG2/MPEG2TS(HDV,AVCHD)/MPEG2_AVC/MP4(XAVC S)/AVC,MPEG4,HEVC/AVI:Xvid,MotionJpeg/ASF(WMV)/VCI/ MOV:AVC,MPEG4.MotionJpeg/MKV:Xvid,AVC,MPEG4.VP8.HEVC/WEBM:VP8/3GPP:MPEG4_AVC/MP3/ASF(WMA)/LPCM/WAV/MP4AAC/FLAC/JPEG					
	On Screen Clock	Yes					
	Sleep Timer	Yes					
	On/Off Timer	Yes					
	Chromecast built-in	Yes					
	Apple AirPlay (Internet required)	Yes					
Control Specs	IP Control	Yes					
	RS-232C Control	Yes					
	HDMI-CEC	Yes					
Inputs and outputs	HDCP	HDCP2.3(for HDMI1/2/3/4)					
	Composite Video Input(s)	1(Side, Mini jack)					
	HDMI inputs total	4(4Side)					
	Analog Audio Input(s) (Total)	1(Side Analog Conversion)					
	Digital Audio Output(s)	1(Side)					
	USB ports	2(Side)					
Design features	Ethernet inputs	1(Side)					
	Frame color	Black					
	Stand Design	Stand	Slim Blade stand				
	VESA® Hole Spacing Compatible	Yes					
VESA® Hole Pitch (W x H)	10.0 x 20.0 cm	20.0 x 20.0 cm			30.0 x 30.0 cm		
Environment specs	Energy label rating	G					
	Screen Size	80 cm	108 cm	126 cm	139 cm	164 cm	189 cm
	On-mode power consumption	66.0W	107.0W	146.0W	196.0W	230.0W	297.0W
	Power Consumption (in Standby)	0.50W					
	Dynamic Backlight Control	Yes					
Power Saving Mode / Back Light Off Mode	Yes						
Measurements (W x H x D) Approx.	Dimension of TV without Stand	72.6x43.0 x7.6cm	97.2x56.7x7.0 cm	112.6x65.3x7.0 cm	124.3x71.9x7.1 cm	146.2x84.2x7.1 cm	168.6x96.9x7.2 cm
	Dimension of TV with Stand	72.6x45.4x17.2 cm	97.2x63.2x28.6 cm	112.6x71.8x28.6 cm	124.3x78.7x33.8 cm	146.2x91.2x33.8 cm	168.6x104.5x41.0 cm
	Dimension of Package Carton	81.4x55.1x15.2 cm	107.0x69.5x14.1 cm	122.6x78.2x14.1 cm	134.8x83.3x16.0 cm	157.4x95.8x18.4 cm	181.0x110.7x18.7 cm
Weight Approx.	Weight of TV without Stand	7.5 kg	10 kg	12.3 kg	15.7 kg	21.6 kg	31.6 kg
	Weight of TV with Stand	7.7 kg	10.5 kg	12.9 kg	16.6 kg	22.5 kg	32.9 kg
	Weight of Package Carton (Gross)	10 kg	14 kg	17 kg	23 kg	30 kg	45 kg
Optional Accessories	10 point IR Touch Overlay	TO-32BZ30J-IR10	TO-43BZ30J-IR10	TO-50BZ30J-IR10	TO-55BZ30J-IR10	TO-65BZ30J-IR10	TO-75BZ30J-IR10
	10 point Capacitive Touch Overlay	TO-32BZ30J-CA10	TO-43BZ30J-CA10	TO-50BZ30J-CA10	TO-55BZ30J-CA10	TO-65BZ30J-CA10	TO-75BZ30J-CA10
Service and Warranty	Standard Warranty	3 Years with Repair or if necessary advanced exchange handled by local partner, on premise where possible					
	2 years PrimeSupport extension reference	PSP.FW32BZ30J.2X	PSP.FW43BZ30J.2X	PSP.FW50BZ30J.2X	PSP.FW55BZ30J.2X	PSP.FW65BZ30J.2X	PSP.FW75BZ30J.2X



FW-43BZ35J	FW-50BZ35J	FW-55BZ40H/1	FW-65BZ40H/1	FW-75BZ40H/1	FW-85BZ40H/1	FW-100BZ40J	
108.0 cm	126.0 cm	139.0 cm	164.0 cm	189.0 cm	215.0 cm	253.0 cm	
560	570	Typ. 620 / Peak 850				600 (Peak 940)	
4000:1	5000:1	6,000:1				4,000:1	9000:1
400000:1	500000:1	550000:1				600000:1	
6		8				6	7
3840x2160							
Yes (HDR10,HLG,Dolby Vision)							
16:9							
Yes							
Frame Dimming			Local Dimming				
LCD							
Direct LED			Direct (Full Array LED)				
X1 4K HDR Processor					Cognitive Processor XR		
24/7							
Wide zoom / Normal / Full / Zoom / 14:9							
Yes							
4K X-Reality PRO							
Triluminos Pro			Triluminos display			XR 4K Upscaling	
178(89/89) degree							
4096x2160p(24,50,60Hz), 3840x2160p(24,25,30,50,60,100,120Hz), 1080p(30,50,60,100,120Hz), 1080/24p, 1080i(50,60Hz), 720p(30,50,60Hz), 720/24p, 576p, 480p							
Down Firing			Side Back + Down Firing		Down Firing		
10W + 10W							
Yes	Yes				Yes	Yes	
Yes	Yes				Yes	Yes	
Yes	Yes				Yes	Yes	
Yes	Yes				Yes	Yes	
Yes	Yes				Yes	Yes	
Android 10							
16GB							
Yes							
Yes							
Integrated							
Yes							
MPEG1:MPEG1/MPEG2PS:MPEG2/MPEG2TS(HDV,AVCHD):MPEG2,AVC/MP4(XAVC S):AVC,MPEG4,HEVC/AVI:Xvid,MotionJpeg/ASF(WMV):VC1/MOV:AVC,MPEG4,MotionJpeg/MKV:Xvid,AVC,MPEG4,VP8,HEVC/WEBM:VP8/3GPP:MPEG4,AVC/MP3/ASF(WMA)/LPCM/WAV/MP4AAC/FLAC/JPEG							
Yes							
Yes							
Yes							
Yes							
Yes							
Yes							
Yes			1(Side)		Yes		
Yes							
HDCP2.3(for HDMI1.2/3/4)							
1(Side, Mini jack)			1(Side)		1(Side, Mini jack)		
4(4Side)							
1(Side Analog Conversion)							
1(Side)							
2(Side)							
1(Side)							
Black							
Slim Blade stand			Metal Blade Stand			Slim Blade stand	
Yes							
20.0 x 20.0 cm			30.0 x 30.0 cm		40.0 x 40.0 cm	60.0 x 40.0 cm	
G							
108.0 cm	126.0 cm	139.0 cm	164.0 cm	189.0 cm	215.0 cm	253.0 cm	
114.0W (Rated)	148.0W (Rated)	97.0W	121.0W	152.0W	189.0W	426.0 W (Rated)	
0.50W							
Yes							
Yes							
96.4x56.3x6.9 cm	111.9x64.9x7.0 cm	123.1x71.0x7.0 cm	145.0x83.3x7.0 cm	167.4x96.1x7.1 cm	189.9x108.9x7.2 cm	226.0x129.7x9.8 cm	
96.4x62.8 x28.6 cm	111.9x71.5x28.6 cm	123.1x78.0x33.8 cm	145.0x90.3x33.8 cm	167.4x103.4x41.0 cm	189.9x116.2x44.1 cm	226.0x134.6x47.5 cm	
107.0x69.5x14.1 cm	122.5x78.2x14.1 cm	135.0x83.6x16.2 cm	157.6x96.1x18.6 cm	181.2x111.0x18.8 cm	203.8x123.5x26.0 cm	244.0x156.0x37.8 cm	
Approx. 10.2 kg	Approx. 12.7 kg	Approx. 16.5 kg	Approx. 22.2 kg	Approx. 32.9 kg	Approx. 45.8 kg	Approx. 88.9 kg	
Approx. 10.7 kg	Approx. 13.3 kg	Approx. 17.5 kg	Approx. 23.2 kg	Approx. 34.4 kg	Approx. 47.7 kg	Approx. 92.6 kg	
Approx. 14 kg	Approx. 19 kg	Approx. 24kg	Approx. 31kg	Approx. 46kg	Approx. 62kg	Approx. 129 kg	
TO-43BZ35J-IR10	TO-50BZ35J-IR10	TO-55BZ40H-IR10	TO-65BZ40H-IR10	TO-75BZ40H-IR10	TO-85BZ40H-IR10	TO-100BZ40J-IR10	
TO-43BZ35J-CA10	TO-50BZ35J-CA10	TO-55BZ40H-CA10	TO-65BZ40H-CA10	TO-75BZ40H-CA10	TO-85BZ40H-CA10	TO-100BZ40J-CA10	
3 Years with Repair or if necessary advanced exchange handled by local partner, on premise where possible							
PSP.FW43BZ35J.2X	PSP.FW50BZ35J.2X	PSP.FDWBZH55.2X	PSP.FDWBZH65.2X	PSP.FDWBZH75.2X	PSP.FDWBZH85.2X	PSP.FW100BZ1.2X	





		FWD-75Z9K	FWD-85Z9K
Display features	Screen Size (inch, measured diagonally)	75"(74.5") 189 cm	85"(84.6") 215 cm
	Display resolution (H x V, pixels)	7680 x 4320	
	Backlight dimming type	Local Dimming	
	Display type	LCD	
	Backlight type	Direct(Full Array Mini LED)	
	Aspect Ratio	16:9	
Professional features	Operating System	Android 10	
	On-board Storage (GB)	16GB	
Display System	TV System (Digital Terrestrial)	DVB-T/T2	
	TV System (Digital Cable)	DVB-C	
	TV System (Digital Sat)	DVB-S/S2	
	Number of Tuners (Terrestrial/Cable)	2(Digital) / 1(Analog)	
	Number of Tuners (Sat)	2	
Network Features	Wi-Fi Direct	Yes	
	Wi-Fi Certified	Yes	
	Wi-Fi Standard	a/b/g/n/ac	
	Apple AirPlay	Yes	
	Chromecast built-in	Yes	
	Internet Browser	Vewnd	
	Codec for Home Network	MPEG1:MPEG1/MPEG2PS:MPEG2/MPEG2TS(HDV,AVCHD):MPEG2,AVC/MP4(XAVC S):AVC,MPEG4,HEVC/AVI:Xvid,MotionJpeg/ASF(WMV):VC1/MOV:AVC,MPEG4,MotionJpeg/MKV:Xvid,AVC,MPEG4,VP8.HEVC/WEBM:VP8/3GPP:MPEG4,AVC/MP3/ASF(WMA)/LPCM/WAV/MP4AAC/FLAC/JPEG,WEBM:VP9/AC4/ogg/AAC/ARW(Screen nail only)	
Wireless LAN	Integrated		
Convenience features	USB playback codecs	MPEG1:MPEG1/MPEG2PS:MPEG2/MPEG2TS(HDV,AVCHD):MPEG2,AVC/MP4(XAVC S):AVC,MPEG4,HEVC/AVI:Xvid,MotionJpeg/ASF(WMV):VC1/MOV:AVC,MPEG4,MotionJpeg/MKV:Xvid,AVC,MPEG4,VP8.HEVC/WEBM:VP8/3GPP:MPEG4,AVC/MP3/ASF(WMA)/LPCM/WAV/MP4AAC/FLAC/JPEG,WEBM:VP9/AC4/ogg/AAC/ARW(Screen nail only)	
	HDMI-CEC	Yes	
	i-Manual	Yes	
	On Screen Clock	Yes	
	Sleep Timer	Yes	
	On/Off Timer	Yes	
	Display Language	AFR,AMH,ARA,ASM,AZE,BEL,BUL,BEN,BOS,CAT,CZE,DAN,DEU,GRE,ENG,SPA,EST,BAQ,PER,FIN,FRA,GLG,GUJ,HIN,HRV,HUN,IND,ISL,ITA,HEB,JPN,KAZ,KAN,KOR,KIR,LAO,LIT,LAV,MAC,MAL,MON,MAR,MAY,BUR,NOB,NEP,NLD,ORI,PAN,POL,POR,RUM,RUS,SOL,SLV,ALB,SRP,SWE,SWA,TAM,TEL,THA,TGL,TUR,UKR,URD,UZB,VIET, zh_CN,zh_HK,zh_TW,ZUL	
Control specs	IP Control	Yes	
	Pro mode	No	
Inputs & Outputs	HDMI Signal	7680x4320p(24,25,30,50,60Hz) ¹ , 4096x2160p(24,50,60Hz), 3840x2160p(24,25,30,50,60,100,120Hz) ² , 1080p(30,50,60,100,120Hz), 1080/24p, 1080i(50,60Hz), 720p(30,50,60Hz), 720/24p, 576p, 480p	
	HDCP	HDCP2.3 (for HDMI1/2/3/4)	
	RF (Terrestrial/Cable) Connection Input(s)	1(Bottom)	
	IF (Satellite) Input(s)	2(Bottom)	
	Composite Video Input(s)	Hybrid w/S-Center Speaker Input x1(Side, Mini jack)	
	HDMI inputs total	4(1Side, 3Bottom)	
	USB ports	1(Side)/1(Bottom)	
	Ethernet inputs	1(Bottom)	
	RS-232C Input(s)	No	
Audio specifications	PCMCIA Slot(s)	1(Side)	
	Speaker Position	Front + Side + TOP	
Audio specifications	Audio Power Output	12.5W + 12.5W + 20W + 20W + 5W + 5W + 5W + 5W	
	Wide Mode	Wide zoom/Normal/Full/Zoom/14:9,Normal/Full1/Full2 for PC	
Video Specifications	4:3 Default	Yes	
	Video Processing	XR 8K Upscaling	
	4K Processor	Cognitive Processor XR	
	Motion Enhancer	XR Motion Clarity, Auto mode	
	HDR (High Dynamic Range) compatibility	Yes(HDR10,HLG,Dolby Vision)	
	Panel Refresh Rate (Native Hertz)	100Hz	
Design Features	Cable Management	Yes	
	Frame color	Titanium Silver	
	Stand Design	Aluminum Edge Stand	
	VESA® Hole Spacing Compatible	Yes	
	VESA® Hole Pitch (W x H)	30.0 x 30.0 cm	40.0 x 40.0 cm
Eco & energy saving	Rated Power Consumption	547 W	696 W
	Power Consumption (in Standby)	0.50W	
	Mercury content (mg)	0.0	
	Power Saving Mode / Back Light Off Mode	Yes	
Dimensions	Display only (W x H x D)	Approx. 167.1 x 97.1 x 7.4 cm	Approx. 189.6 x 109.6 x 7.4 cm
	Display with Stand (Standard position) (W x H x D)	Approx. 167.1 x 99.8 x 39.6 cm	Approx. 189.6 x 112.3 x 46.0 cm
Weights (Approx.)	Display only	Approx. 47.5 kg	Approx. 58.4 kg
	Display with Stand	Approx. 49.1 kg	Approx. 60.1 kg
	Package Carton (Gross)	Approx. 60 kg	Approx. 73 kg
Optional accessories	Wallmount Bracket	SU-WL450(Terminal access limitation, refer to SU-WL450 product page)	
Service and Warranty	Standard Warranty	3 years with advanced exchange handled by local partner, on premise where possible	

¹ Only HDMI IN 4 supported

² 100Hz and 120Hz is supported by HDMI IN 2, IN 3 and IN 4

A90K/A95K



FWD-42A90K

FWD-48A90K

Display features	Screen Size (inch, measured diagonally)	42"(41.5") 106 cm	48"(47.5") 121 cm
	Display resolution (H x V, pixels)	3840 x 2160	
	Display device	OLED	
	Aspect Ratio	16:9	
Professional features	Operating System	Android 10	
	On-board Storage (GB)	16GB	
Display System	TV System (Digital Terrestrial)	DVB-T/T2	
	TV System (Digital Cable)	DVB-C	
	TV System (Digital Sat)	DVB-S/S2	
	Number of Tuners (Terrestrial/Cable)	2(Digital) / 1(Analog)	
	Number of Tuners (Sat)	2	
Network Features	Wi-Fi Direct	Yes	
	Wi-Fi Certified	Yes	
	Wi-Fi Standard	a/b/g/n/ac	
	Apple AirPlay	Yes	
	Chromecast built-in	Yes	
	Internet Browser	Vewd	
	Codec for Home Network	MPEG1:MPEG1/MPEG2PS:MPEG2/MPEG2TS(HDV,AVCHD):MPEG2,AVC/MP4(XAVC S):AVC,MPEG4,HEVC/AVI:Xvid,MotionJpeg/ASF(WMV):VC1/ MOV:AVC,MPEG4,MotionJpeg/MKV:Xvid,AVC,MPEG4,VP8,HEVC/WEBM:VP8/3GPP:MPEG4,AVC/MP3/ASF(WMA)/LPCM/WAV/MP4AAC/FLAC/JPEG,WEBM:VP9/AC4/ogg/AAC/ARW(Screen nail only)	
Wireless LAN	Integrated		
Convenience features	USB playback codecs	MPEG1:MPEG1/MPEG2PS:MPEG2/MPEG2TS(HDV,AVCHD):MPEG2,AVC/MP4(XAVC S):AVC,MPEG4,HEVC/AVI:Xvid,MotionJpeg/ASF(WMV):VC1/ MOV:AVC,MPEG4,MotionJpeg/MKV:Xvid,AVC,MPEG4,VP8,HEVC/WEBM:VP8/3GPP:MPEG4,AVC/MP3/ASF(WMA)/LPCM/WAV/MP4AAC/FLAC/JPEG,WEBM:VP9/AC4/ogg/AAC/ARW(Screen nail only)	
	HDMI-CEC	Yes	
	i-Manual	Yes	
	On Screen Clock	Yes	
	Sleep Timer	Yes	
	On/Off Timer	Yes	
	Display Language	AFR, AMH, ARA, ASM, AZE, BEL, BUL, BEN, BOS, CAT, CZE, DAN, DEU, GRE, ENG, SPA, EST, BAQ, PER, FIN, FRA, GLG, GUJ, HIN, HRV, HUN, IND, ISL, ITA, HEB, JPN, KAZ, KAN, KOR, KIR, LAO, LIT, LAV, MAC, MAL, MON, MAR, MAY, BUR, NOB, NEP, NLD, ORI, PAN, POL, POR, RUM, RUS, SOL, SLV, ALB, SRP, SWE, SWA, TAM, TEL, THA, TGL, TUR, UKR, URD, UZB, VIE, zh_CN, zh_HK, zh_TW, ZUL	
	IP Control	Yes	
	Pro mode	No	
	Inputs & Outputs	HDMI Signal	4096x2160p(24,50,60Hz), 3840x2160p(24,25,30,50,60,100,120Hz) *, 1080p(30,50,60,100,120Hz), 1080/24p, 1080i(50,60Hz), 720p(30,50,60Hz), 720/24p, 576p, 480p
HDCP		HDCP2.3 (for HDMI1/2/3/4)	
RF (Terrestrial/Cable) Connection Input(s)		1(Bottom)	
IF (Satellite) Input(s)		2(Bottom)	
Composite Video Input(s)		Hybrid w/S-Center Speaker Input x1(Side, Mini jack)	
HDMI inputs total		4(1Side, 3Bottom)	
USB ports		1(Side)/1(Bottom)	
Ethernet inputs		1(Bottom)	
RS-232C Input(s)		No	
PCMCIA Slot(s)		1(Side)	
Audio specifications	Speaker Position	Front	
	Audio Power Output	10W + 10W + 5W	
Video Specifications	Wide Mode	Wide zoom/Normal/Full/Zoom/14:9,Normal/Full1/Full2 for PC	
	4:3 Default	Yes	
	Video Processing	XR 4K Upscaling	
	4K Processor	Cognitive Processor XR	
	Motion Enhancer	XR OLED Motion, Auto mode	
	HDR (High Dynamic Range) compatibility	Yes(HDR10,HLG,Dolby Vision)	
Design Features	Panel Refresh Rate (Native Hertz)	100Hz	
	Cable Management	Yes	
	Frame color	Titanium Black	
	Stand Design	Aluminum Center Plate	
	VESA® Hole Spacing Compatible	Yes	
Eco & energy saving	VESA® Hole Pitch (W x H)	20.0 x 20.0 cm	30.0 x 30.0 cm
	Rated Power Consumption	201W	235W
	Power Consumption (in Standby)	0.50W	
	Mercury content (mg)	0.0	
Dimensions	Power Saving Mode / Back Light Off Mode	Yes	
	Display only (W x H x D)	Approx. 93.3 x 54.6 x 5.7 (2.05) cm	Approx. 106.9 x 62.4 x 5.9 (2.48) cm
	Display with Stand (Standard position) (W x H x D)	Approx. 93.3 x 55.1 x 22.5 cm	Approx. 106.9 x 62.9 x 22.5 cm
Weights (Approx.)	Display only	Approx. 13.3 kg	Approx. 13.4 kg
	Display with Stand	Approx. 16.4 kg	Approx. 16.5 kg
	Package Carton (Gross)	Approx. 21 kg	Approx. 21 kg
Optional accessories	Wallmount Bracket	SU-WL450(Terminal access limitation, refer to SU-WL450 product page), SU-WL850(Depends on usage of terminal)	
Service and Warranty	Standard Warranty	3 years with advanced exchange handled by local partner, on premise where possible	



FWD-55A95K

FWD-65A95K

Display features	Screen Size (inch, measured diagonally)	55"(54.6") 139 cm	65"(64.5") 164 cm
	Display resolution (H x V, pixels)	3840 x 2160	
	Display device	OLED(QD-OLED)	
	Aspect Ratio	16:9	
Professional features	Operating System	Android 10	
	On-board Storage (GB)	16GB	
Display System	TV System (Digital Terrestrial)	DVB-T/T2	
	TV System (Digital Cable)	DVB-C	
	TV System (Digital Sat)	DVB-S/S2	
	Number of Tuners (Terrestrial/Cable)	2(Digital) / 1(Analog)	
	Number of Tuners (Sat)	2	
Network Features	Wi-Fi Direct	Yes	
	Wi-Fi Certified	Yes	
	Wi-Fi Standard	a/b/g/n/ac	
	Apple AirPlay	Yes	
	Chromecast built-in	Yes	
	Internet Browser	Vewd	
	Codec for Home Network	MPEG1:MPEG1/MPEG2PS:MPEG2/MPEG2TS(HDV,AVCHD):MPEG2,AVC/MP4(XAVC S):AVC,MPEG4,HEVC/AVI:Xvid,MotionJpeg/ASF(WMV):VC1/ MOV:AVC,MPEG4,MotionJpeg/MKV:Xvid,AVC,MPEG4,VP8,HEVC/WEBM:VP8/3GPP:MPEG4,AVC/MP3/ASF(WMA)/LPCM/WAV/MP4AAC/FLAC/JPEG,WEBM:VP9/AC4/ogg/AAC/ARW(Screen nail only)	
Wireless LAN	Integrated		
Convenience features	USB playback codecs	MPEG1:MPEG1/MPEG2PS:MPEG2/MPEG2TS(HDV,AVCHD):MPEG2,AVC/MP4(XAVC S):AVC,MPEG4,HEVC/AVI:Xvid,MotionJpeg/ASF(WMV):VC1/ MOV:AVC,MPEG4,MotionJpeg/MKV:Xvid,AVC,MPEG4,VP8,HEVC/WEBM:VP8/3GPP:MPEG4,AVC/MP3/ASF(WMA)/LPCM/WAV/MP4AAC/FLAC/JPEG,WEBM:VP9/AC4/ogg/AAC/ARW(Screen nail only)	
	HDMI-CEC	Yes	
	i-Manual	Yes	
	On Screen Clock	Yes	
	Sleep Timer	Yes	
	On/Off Timer	Yes	
	Display Language	AFR, AMH, ARA, ASM, AZE, BEL, BUL, BEN, BOS, CAT, CZE, DAN, DEU, GRE, ENG, SPA, EST, BAQ, PER, FIN, FRA, GLG, GUJ, HIN, HRV, HUN, IND, ISL, ITA, HEB, JPN, KAZ, KAN, KOR, KIR, LAO, LIT, LAV, MAC, MAL, MON, MAR, MAY, BUR, NOB, NEP, NLD, ORI, PAN, POL, POR, RUM, RUS, SOL, SLV, ALB, SRP, SWE, SWA, TAM, TEL, THA, TGL, TUR, UKR, URD, UZB, VIE, zh_CN, zh_HK, zh_TW, ZUL	
	IP Control	Yes	
	Pro mode	No	
	Inputs & Outputs	HDMI Signal	4096x2160p(24,50,60Hz), 3840x2160p(24,25,30,50,60,100,120Hz) *, 1080p(30,50,60,100,120Hz), 1080/24p, 1080i(50,60Hz), 720p(30,50,60Hz), 720/24p, 576p, 480p
HDCP		HDCP2.3 (for HDMI1/2/3/4)	
RF (Terrestrial/Cable) Connection Input(s)		1(Bottom)	
IF (Satellite) Input(s)		2(Bottom)	
Composite Video Input(s)		Hybrid w/S-Center Speaker Input x1(Side, Mini jack)	
HDMI inputs total		4(1Side, 3Bottom)	
USB ports		1(Side)/1(Bottom)	
Ethernet inputs		1(Bottom)	
RS-232C Input(s)		No	
PCMCIA Slot(s)		1(Side)	
Audio specifications	Speaker Position	Front	
	Audio Power Output	20W + 20W + 10W + 10W	
Video Specifications	Wide Mode	Wide zoom/Normal/Full/Zoom/14:9,Normal/Full1/Full2 for PC	
	4:3 Default	Yes	
	Video Processing	XR 4K Upscaling	
	4K Processor	Cognitive Processor XR	
	Motion Enhancer	XR OLED Motion, Auto mode	
	HDR (High Dynamic Range) compatibility	Yes(HDR10,HLG,Dolby Vision)	
Design Features	Panel Refresh Rate (Native Hertz)	100Hz	
	Cable Management	Yes	
	Frame color	Titanium Black	
	Stand Design	Full Edge Slate	
	VESA® Hole Spacing Compatible	Yes	
Eco & energy saving	VESA® Hole Pitch (W x H)	30.0 x 30.0 cm	30.0 x 30.0 cm
	Rated Power Consumption	348W	417W
	Power Consumption (in Standby)	0.50W	
	Mercury content (mg)	0.0	
Dimensions	Power Saving Mode / Back Light Off Mode	Yes	
	Display only (W x H x D)	Approx. 122.5 x 71.4 x 4.3 (2.17) cm	Approx. 144.4 x 83.7 x 4.3 (2.17) cm
	Display with Stand (Standard position) (W x H x D)	-	-
Weights (Approx.)	Display only	Approx. 21.2 kg	Approx. 27 kg
	Display with Stand	-	-
	Package Carton (Gross)	Approx. 40 kg	Approx. 51 kg
Optional accessories	Wallmount Bracket	SU-WL450(Terminal access limitation, refer to SU-WL450 product page), SU-WL850(Refer to Country/Area Handling Chart)	
Service and Warranty	Standard Warranty	3 years with advanced exchange handled by local partner, on premise where possible	

*1 100Hz and 120Hz is supported by HDMI IN 3 and IN 4

A80K/A90J



FWD-55A80K	FWD-65A80K	FWD-77A80K
------------	------------	------------

Display Features	Screen size (measured diagonally)	55"(54.6")	65"(64.5")	77"(76.7")
	Display resolution (H x V, pixels)	139 cm	164 cm	195 cm
	Display device	3840 x 2160		
	Aspect Ratio	OLED		
Professional Features	Operating System	16:9		
	On-board Storage (GB)	Android 10		
Display System	TV System (Digital Terrestrial)	16GB		
	TV System (Digital Cable)	DVB-T/T2		
	TV System (Digital Sat)	DVB-C		
	Number of Tuners (Terrestrial/Cable)	DVB-S/S2		
	Number of Tuners (Sat)	2(Digital) / 1(Analog)		
Network Features	Wi-Fi Direct	2		
	Wi-Fi Certified	Yes		
	Wi-Fi Standard	Yes		
	Apple AirPlay	a/b/g/n/ac		
	Chromecast built-in	Yes		
	Internet Browser	Yes		
	Codec for Home Network	Vewvd		
Convenience features	Wireless LAN	Integrated		
	USB playback codecs	MPEG1:MPEG1/MPEG2PS:MPEG2/MPEG2TS(HDV,AVCHD):MPEG2_AVC/MP4(XAVC S):AVC,MPEG4,HEVC/AVI:Xvid,MotionJpeg/ASF(WMV):VC1/ MOV:AVC,MPEG4,MotionJpeg/MKV:Xvid,AVC,MPEG4,VP8.HEVC/WEBM:VP8/3GPP:MPEG4,AVC/MP3/ASF(WMA)/LPCM/WAV/MP4AAC/FLAC/JPEG,WEBM:VP9/AC4/ogg/AAC/ARW(Screen nail only)		
	HDMI-CEC	Yes		
	i-Manual	Yes		
	On Screen Clock	Yes		
	Sleep Timer	Yes		
	On/Off Timer	Yes		
Control specs	Display Language	AFR,AMH,ARA,ASM,AZE,BEL,BUL,BEN,BOS,CAT,CZE,DAN,DEU,GRE,ENG,SPA,EST,BAQ,PER,FIN,FRA,GLG,GUJ,HIN,HRV,HUN,IND,ISL,ITA,HEB,JPN,KAZ,KAN,KOR,KIR,LAO,LIT,LAV,MAC,MAL,MON,MAR,MAY,BUR,NOB,NEP,NLD,ORI,PAN,POL,POR,RUM,RUS,SOL,SLV,ALB,SRP,SWE,SWA,TAM,TEL,THA,TGL,TUR,UKR,URD,UZB,VIE,zh_CN,zh_HK,zh_TW,ZUL		
	IP Control	Yes		
Inputs & Outputs	Pro mode	No		
	HDMI Signal	4096x2160p(24.50,60Hz), 3840x2160p(24,25,30,50,60,100,120Hz), 1080p(30,50,60,100,120Hz), 1080/24p, 1080i(50,60Hz), 720p(30,50,60Hz), 720/24p, 576p, 480p		
	HDCP	HDCP2.3(for HDMI1/2/3/4)		
	RF (Terrestrial/Cable) Connection Input(s)	1(Side)		
	IF (Satellite) Input(s)	2(Side)		
	Composite Video Input(s)	Hybrid w/S-Center Speaker Input x1(Side, Mini jack)		
	HDMI inputs total	4(Side)		
	USB ports	2(Side)		
	Ethernet inputs	1(Side)		
	RS-232C Input(s)	No		
Audio specifications	PCMCIA Slot(s)	1(Top)		
	Speaker Position	Down Firing + Front		
Video Specification	Audio Power Output	10W + 10W + 10W + 10W + 10W	20W + 10W + 10W + 10W + 10W	
	Wide Mode	Wide zoom/Normal/Full/Zoom/14:9,Normal/Full1/Full2 for PC		
	4:3 Default	Yes		
	Video Processing	XR 4K Upscaling		
	4K Processor	Cognitive Processor XR		
	Motion enhancer	XR OLED Motion, Auto mode		
Design Features	HDR (High Dynamic Range) compatibility	Yes (HDR10, HLG, Dolby Vision)		
	Panel Refresh Rate (Native Hertz)	100Hz		
	Cable Management	-		
	Frame color	Titanium Black		
Eco & energy saving	Stand Design	Metal Slim Wedged Stand		
	VESA® Hole Spacing Compatible	Yes		
	VESA® Hole Pitch (W x H)	30.0 x 30.0 cm		
	Rated Power Consumption	362 W	460 W	603 W
Dimensions	Power Consumption (in Standby)	0.50 W		
	Mercury content (mg)	0.0		
	Power Saving Mode / Back Light Off Mode	Yes		
Weights (Approx.)	Display only (W x H x D)	Approx. 122.7 x 71.2 x 5.3 (0.69) cm	Approx. 144.8 x 83.6 x 5.3 (2.62) cm	Approx. 172.2 x 99.8 x 5.4 (2.79) cm
	Display with Stand (W x H x D)	Approx. 122.7 x 73.8 x 33.0 cm	Approx. 144.8 x 86.2 x 33.0 cm	Approx. 172.2 x 102.4 x 38.9 cm
	Display only	Approx. 17.9 kg	Approx. 23 kg	Approx. 34.8 kg
Optional accessories	Display with Stand	Approx. 19.5 kg	Approx. 24.6 kg	Approx. 37 kg
	Package Carton (Gross)	Approx. 25 kg	Approx. 33 kg	Approx. 43 kg
	Camera Unit (option)	CMU-BC1		
Service and Warranty	Wallmount Bracket	SU-WL450(Terminal access limitation, refer to SU-WL450 product page), SU-WL850(Depends on usage of terminal)		
	Standard Warranty	3 years with advanced exchange handled by local partner, on premise where possible		



FWD-55A90J	FWD-65A90J	FWD-83A90J
------------	------------	------------

Display Features	Screen size (measured diagonally)	55"(54.6")	65"(64.5")	83"(82.5")
	Display resolution (H x V, pixels)	139 cm	164 cm	195 cm
	Display device	3840 x 2160		
	Aspect Ratio	OLED		
Professional Features	Operating System	16:9		
	On-board Storage (GB)	Android 10		
Display System	TV System (Digital Terrestrial)	16GB		
	TV System (Digital Cable)	DVB-T/T2		
	TV System (Digital Sat)	DVB-C		
	Number of Tuners (Terrestrial/Cable)	DVB-S/S2		
	Number of Tuners (Sat)	2(Digital) / 1(Analog)		
Network Features	Wi-Fi Direct	2		
	Wi-Fi Certified	Yes		
	Wi-Fi Standard	Yes		
	Apple AirPlay	a/b/g/n/ac		
	Chromecast built-in	Yes		
	Internet Browser	Yes		
	Codec for Home Network	Vewvd		
Convenience features	Wireless LAN	Integrated		
	USB playback codecs	MPEG1:MPEG1/MPEG2PS:MPEG2/MPEG2TS(HDV,AVCHD):MPEG2_AVC/MP4(XAVC S):AVC,MPEG4,HEVC/AVI:Xvid,Motinjpeg/ASF(WMV):VC1/ MOV:AVC, MPEG4,MotionJpeg/MKV:Xvid,AVC,MPEG4,VP8.HEVC/WEBM:VP8/3GPP:MPEG4,AVC/MP3/ASF(WMA)/LPCM/WAV/MP4AAC/FLAC/JPEG		
	HDMI-CEC	Yes		
	i-Manual	Yes		
	On Screen Clock	Yes		
	Sleep Timer	Yes		
	On/Off Timer	Yes		
Control specs	Display Language	AFR,AMH,ARA,ASM,AZE,BEL,BUL,BEN,BOS,CAT,CZE,DAN,DEU,GRE,ENG,SPA,EST,BAQ,PER,FIN,FRA,GLG,GUJ,HIN,HRV,HUN,IND,ISL,ITA,HEB,JPN,KAZ,KAN,KOR,KIR,LAO,LIT,LAV,MAC,MAL,MON,MAR,MAY,BUR,NOB,NEP,NLD,ORI,PAN,POL,POR,RUM,RUS,SOL,SLV,ALB,SRP,SWE,SWA,TAM,TEL,THA,TGL,TUR,UKR,URD,UZB,VIE,zh_CN,zh_HK,zh_TW,ZUL		
	IP Control	Yes		
Inputs & Outputs	Pro mode	No		
	HDMI Signal	4096x2160p(24.50,60Hz), 3840x2160p(24,25,30,50,60,100,120Hz), 1080p(30,50,60,100,120Hz), 1080/24p, 1080i(50,60Hz), 720p(30,50,60Hz), 720/24p, 576p, 480p		
	HDCP	HDCP2.3(for HDMI1/2/3/4)		
	RF (Terrestrial/Cable) Connection Input(s)	1(Bottom)		
	IF (Satellite) Input(s)	2(Bottom)		
	Composite Video Input(s)	Hybrid w/S-Center Speaker Input x1(Side, Mini jack)		
	HDMI inputs total	4(1Side, 3Bottom)		
	USB ports	2(Side) / 1(Bottom)		
	Ethernet inputs	1(Bottom)		
	RS-232C Input(s)	No		
Audio specifications	PCMCIA Slot(s)	1(Side)		
	Speaker Position	Front		
Video Specification	Audio Power Output	20W + 20W + 10W + 10W	20W + 10W + 10W + 10W + 10W	
	Wide Mode	Wide zoom / Normal / Full / Zoom / 14:9		
	4:3 Default	Yes		
	Video Processing	XR 4K Upscaling		
	4K Processor	Cognitive Processor XR		
	Motion enhancer	XR Motion Clarity, Auto mode		
Design Features	HDR (High Dynamic Range) compatibility	Yes (HDR10, HLG, Dolby Vision)		
	Panel Refresh Rate (Native Hertz)	100Hz		
	Cable Management	Yes		
	Frame color	Titanium Black		
Eco & energy saving	Stand Design	Aluminum Edge Stand		
	VESA® Hole Spacing Compatible	Yes		
	VESA® Hole Pitch (W x H)	30.0 x 30.0 cm		
	Rated Power Consumption	399 W	532 W	817 W
Dimensions	Power Consumption (in Standby)	0.50 W		
	Mercury content (mg)	0.0		
	Power Saving Mode / Back Light Off Mode	Yes		
Weights (Approx.)	Display only (W x H x D)	Approx. 122.3 x 70.9 x 4.1(0.56) cm	Approx. 144.4 x 83.3 x 4.1(0.56) cm	Approx. 185.0 x 106.7 x 5.3 (0.73) cm
	Display with Stand (W x H x D)	Approx. 128.2 x 70.9 x 31.7 cm	Approx. 150.2 x 83.4 x 31.7 cm	Approx. 188.0 x 107.2 x 42.8 cm
	Display only	Approx. 18.6 kg	Approx. 22.5 kg	Approx. 42 kg
Optional accessories	Display with Stand	Approx. 20.3 kg	Approx. 24.6 kg	Approx. 43.5 kg
	Package Carton (Gross)	Approx. 29 kg	Approx. 34 kg	Approx. 59 kg
	Camera Unit (option)	-		
Service and Warranty	Wallmount Bracket	SU-WL450 (Terminal access limitation, refer to SU-WL450 product page), SU-WL850(Refer to Country/Area Handling Chart)		
	Standard Warranty	3 years with advanced exchange handled by local partner, on premise where possible		

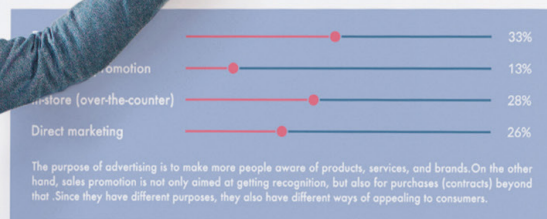
*1 Only HDMI IN 4 supported

*2 100Hz and 120Hz is supported by HDMI IN 2, IN 3 and IN 4

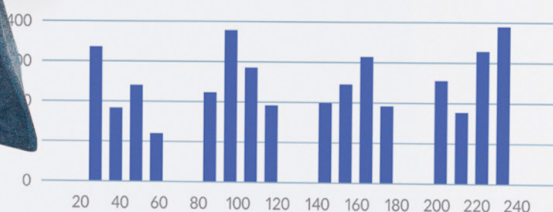
SALES PROMOTION & MARKETING



In recent years, the number of consumers who collect information on the Internet before purchasing is increasing, so it is necessary to consider various channels and tools in consideration of the trends of the times.

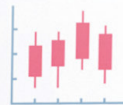


The purpose of advertising is to make more people aware of products, services, and brands. On the other hand, sales promotion is not only aimed at getting recognition, but also for purchases (contracts) beyond that. Since they have different purposes, they also have different ways of appealing to consumers.



01

The Web advertising lasts for many divergences.



02

A listing advertisement is the advertisement that is displayed with search results.

01

It is important to "clarify" the purpose of conducting sales promotion.

02

It is important to analyze the characteristics of prospective customers, including behavioral observation data, and clarify their needs and wants in detail.

03

It informs prospective customers of the existence of the product, attracts interest, stimulates wants to memorize the product, and leads to the purchase of the product.

04

After-sales customers are of you conduct the company naturally subsequent



392

The remarketing is technique to submit approach to the user.



36% A



57% B

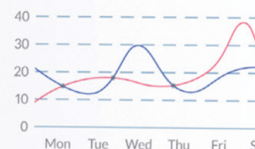


63% C



71% D

National newspapers are superior in reliability.



X80K/X81K/
X85K/X90H



FWD-43X80K	FWD-50X80K	FWD-55X80K	FWD-65X80K
43"(42.5") 108 cm	50"(49.5") 126 cm	55"(54.6") 139 cm	65"(64.5") 164 cm
450	450	438	438
1,200:1	5,000:1	1,200:1	390,000:1
	400,000:1		
3840x2160			
Frame Dimming			
LCD			
Direct LED			
16:09			
-			
1%			
8	10	8	8
Android 10			
16GB			
DVB-T/T2			
DVB-C			
DVB-S/S2			
1(Digital)/1(Analog)			
1			
Yes			
Yes			
a/b/g/n/ac			
Yes			
Yes			
Vewd			
MPEG1:MPEG1/MPEG2PS:MPEG2/MPEG2TS(HDV,AVCHD):MPEG2,AVC/MP4(XAVC S):AVC,MPEG4,HEVC/AVI:Xvid,MotionJpeg/ASF(WMV):VC1/MOV:AVC,MPEG4,MotionJpeg/MKV:Xvid,AVC,MPEG4,VP8,HEVC/WEBM:VP8/3GPP:MPEG4,AVC/MP3/ASF(WMA)/LPCM/WAV/MP4AAC/FLAC/JPEG,WEBM:VP9/AC4/ogg/AAC/ARW(Screen nail only)			
Integrated			
MPEG1:MPEG1/MPEG2PS:MPEG2/MPEG2TS(HDV,AVCHD):MPEG2,AVC/MP4(XAVC S):AVC,MPEG4,HEVC/AVI:Xvid,MotionJpeg/ASF(WMV):VC1/MOV:AVC,MPEG4,MotionJpeg/MKV:Xvid,AVC,MPEG4,VP8,HEVC/WEBM:VP8/3GPP:MPEG4,AVC/MP3/ASF(WMA)/LPCM/WAV/MP4AAC/FLAC/JPEG,WEBM:VP9/AC4/ogg/AAC/ARW(Screen nail only)			
Yes			
Yes			
Yes			
Yes			
AFR,AMH,ARA,ASM,AZE,BEL,BUL,BEN,BOS,CAT,CZE,DAN,DEU,GRE,ENG,SPA,EST,BAQ,PER,FIN,FRA,GLG,GUJ,HIN,HRV,HUN,IND,ISL,ITA,HEB,IPN,KAZ,KAN,KOR,KIR,LAO,LIT,LAV,MAC,MAL,MON,MAR,-MAY,BUR,NOB,NEP,NLD,ORI,PAN,POL,POR,RUM,RUS,SOL,SLV,ALB,SRP,SWE,SWA,TAM,TEL,THA,TGL,TUR,UKR,URD,UZB,VI,IE,zh_CN,zh_HK,zh_TW,ZUL			
Yes			
No			
4096x2160p(24,50,60Hz), 3840x2160p(24,25,30,50,60Hz), 1080p(30,50,60Hz), 1080/24p, 1080i(50,60Hz), 720p(30,50,60Hz), 720/24p, 576p, 480p			
HDCP2.3(for HDMI1/2/3/4)			
1(Side)			
1(Side)			
1(Side, Mini jack)			
4(4Side)			
2(Side)			
1(Side)			
No			
1(Top)			
Down Firing			
10W + 10W			
Wide zoom/Normal/Full/Zoom/14:9,Normal/Full1/Full2 for PC			
Yes			
4K X-Reality PRO			
4K HDR Processor X1			
Motionflow XR 200/240Hz (Native 50/60Hz), Auto mode			
Yes(HDR10,HLG,Dolby Vision)			
50Hz			
Yes			
Black			
Slim Blade stand			
Yes			
20.0 x 20.0 cm		30.0 x 30.0 cm	
114 W	151 W	241 W	
	0.50 W		
	0.0		
	Yes		
Approx. 96.4 x 56.3 x 6.9 cm	Approx. 111.9 x 64.9 x 7.0 cm	Approx. 123.3 x 71.3 x 7.2 cm	Approx. 145.2 x 83.6 x 7.2 cm
Approx. 96.4 x 62.9 x 28.8 cm	Approx. 111.9 x 71.6 x 28.8 cm	Approx. 123.3 x 78.3 x 33.9 cm	Approx. 145.2 x 90.6 x 33.9 cm
Approx. 10.1 kg	Approx. 12.4 kg	Approx. 15.9 kg	Approx. 21.7 kg
Approx. 10.7 kg	Approx. 13 kg	Approx. 16.9 kg	Approx. 22.7 kg
Approx. 14 kg	Approx. 18 kg	Approx. 22 kg	Approx. 32 kg
SU-WL450(Terminal access limitation, refer to SU-WL450 product page)		SU-WL450(Terminal access limitation, refer to SU-WL450 product page), SU-WL850(Refer to Country/Area Handling Chart)	
3 Years with advanced exchange handled by local partner, on premise where possible			



FWD-75X81K	FWD-85X85K	FWD-85X90H
75"(74.5") 189 cm	85"(84.6") 215 cm	85"(84.6") 215 cm
450	517	620
1200:1	6,000:1	4,000:1
400,000:1	460,000:1	600000:1
	3840x2160	
Frame Dimming		Local Dimming
LCD		
Direct LED	Direct(Full Array LED)	
16:09		
-		
1%		2%
8	6	
Android 10		Android 9.0 Pie
16GB		
DVB-T/T2		
DVB-C		
DVB-S/S2		
2(Digital)/1(Analog)		2(Digital)/1(Analog)
1		2
Yes		
Yes		
a/b/g/n/ac		
Yes		
Yes		
Vewd		
MPEG1:MPEG1/MPEG2PS:MPEG2/MPEG2TS(HDV,AVCHD):MPEG2,AVC/MP4(XAVC S):AVC,MPEG4,HEVC/AVI:Xvid,MotionJpeg/ASF(WMV):VC1/MOV:AVC,MPEG4,MotionJpeg/MKV:Xvid,AVC,MPEG4,VP8,HEVC/WEBM:VP8/3GPP:MPEG4,AVC/MP3/ASF(WMA)/LPCM/WAV/MP4AAC/FLAC/JPEG,WEBM:VP9/AC4/ogg/AAC/ARW(Screen nail only)		
Integrated		
MPEG1:MPEG1/MPEG2PS:MPEG2/MPEG2TS(HDV,AVCHD):MPEG2,AVC/MP4(XAVC S):AVC,MPEG4,HEVC/AVI:Xvid,MotionJpeg/ASF(WMV):VC1/MOV:AVC,MPEG4,MotionJpeg/MKV:Xvid,AVC,MPEG4,VP8,HEVC/WEBM:VP8/3GPP:MPEG4,AVC/MP3/ASF(WMA)/LPCM/WAV/MP4AAC/FLAC/JPEG,WEBM:VP9/AC4/ogg/AAC/ARW(Screen nail only)		
Yes		
Yes		
Yes		
Yes		
AFR,AMH,ARA,ASM,AZE,BEL,BUL,BEN,BOS,CAT,CZE,DAN,DEU,GRE,ENG,SPA,EST,BAQ,PER,FIN,FRA,GLG,GUJ,HIN,HRV,HUN,IND,ISL,ITA,HEB,IPN,KAZ,KAN,KOR,KIR,LAO,LIT,LAV,MAC,MAL,MON,MAR,-MAY,BUR,NOB,NEP,NLD,ORI,PAN,POL,POR,RUM,RUS,SOL,SLV,ALB,SRP,SWE,SWA,TAM,TEL,THA,TGL,TUR,UKR,URD,UZB,VI,IE,zh_CN,zh_HK,zh_TW,ZUL		
Yes		
No		Yes
4096x2160p(24,50,60Hz), 3840x2160p(24,25,30,50,60Hz), 1080p(30,50,60Hz), 1080/24p, 1080i(50,60Hz), 720p(30,50,60Hz), 720/24p, 576p, 480p		
HDCP2.3(for HDMI1/2/3/4)		
1(Side)		
1(Side)		2(Side)
1(Side, Mini jack)		1(Side)
4(4Side)		
2(Side)		
1(Side)		
No		
1(Top)		
Down Firing		Side Back + Down Firing
10W + 10W		
Wide zoom/Normal/Full/Zoom/14:9,Normal/Full1/Full2 for PC		
Yes		
4K X-Reality PRO		
4K HDR Processor X1		
Motionflow XR 200/240Hz (Native 50/60Hz), Auto mode		X-Motion Clarity, Auto mode
Yes(HDR10,HLG,Dolby Vision)		
50Hz		100Hz
Yes		
Black		
Slim Blade stand		Metal Blade stand
Yes		
30.0 x 30.0 cm		40.0 x 40.0 cm
317 W	389 W	340 W
	0.50 W	
	0.0	
	Yes	
Approx. 167.5 x 96.2 x 7.3 cm	Approx. 190.1 x 109.0 x 7.3 cm	Approx. 189.9x108.9x7.2 cm
Approx. 167.5 x 104.1 x 41.2 cm	Approx. 190.1 x 117.8 x 45.7 cm	Approx. 189.9x116.2x44.1 cm
Approx. 32.2 kg	Approx. 44.7 kg	Approx. 45.8 Kg
Approx. 33.5 kg	Approx. 46.2 kg	Approx. 47.7 Kg
Approx. 44 kg	Approx. 62 kg	Approx. 62 kg
SU-WL450(Terminal access limitation, refer to SU-WL450 product page), SU-WL850(Refer to Country/Area Handling Chart)		SU-WL450(Terminal access limitation, refer to SU-WL450 product page)
3 Years with advanced exchange handled by local partner, on premise where possible		

*1 100Hz and 120Hz is supported by HDMI IN 3 and IN 4

X95K



	FWD-65X95K	FWD-75X95K	FWD-85X95K	
General Features	Screen Size (inch, measured diagonally)	65"(64.5") 164 cm	75"(74.5") 189 cm	85"(84.6") 215 cm
	Brightness (cd/m ²)	730		
	Native contrast ratio	2,800:1		
	Dynamic contrast ratio	700,000:1		
	Display resolution (H x V, pixels)	3840x2160		
Display features	Dimming type	Local Dimming		
	Display device	LCD		
	Backlight type	Direct(Full Array Mini LED)		
	Aspect Ratio	16:09		
	Panel type	VA		
	Haze	1%		
Response time (ms)	8		6	
Professional features	Operating System	Android 10		
	On-board Storage (GB)	16GB		
Display System	TV System (Digital Terrestrial)	DVB-T/T2		
	TV System (Digital Cable)	DVB-C		
	TV System (Digital Sat)	DVB-S/S2		
	Number of Tuners (Terrestrial/Cable)	2(Digital)/1(Analog)		
	Number of Tuners (Sat)	2		
Network Features	Wi-Fi Direct	Yes		
	Wi-Fi Certified	Yes		
	Wi-Fi Standard	a/b/g/n/ac		
	Apple AirPlay	Yes		
	Chromecast built-in	Yes		
	Internet Browser	Vewd		
	Codec for Home Network	MPEG1:MPEG1/MPEG2PS:MPEG2/MPEG2TS(HDV,AVCHD):MPEG2,AVC/MP4(XAVC S):AVC,MPEG4,HEVC/AVI:Xvid,MotionJpeg/ASF(WMV):VC1/MOV:AVC,MPEG4,MotionJpeg/MKV:Xvid,AVC,MPEG4,VP8.HEVC/WEBM:VP8/3GPP:MPEG4,AVC/MP3/ASF(WMA)/LPCM/WAV/MP4AAC/FLAC/JPEG,WEBM:VP9/AC4/ogg/AAC/ARW(Screen nail only)		
Wireless LAN	Integrated			
Convenience features	USB playback codecs	MPEG1:MPEG1/MPEG2PS:MPEG2/MPEG2TS(HDV,AVCHD):MPEG2,AVC/MP4(XAVC S):AVC,MPEG4,HEVC/AVI:Xvid,MotionJpeg/ASF(WMV):VC1/MOV:AVC,MPEG4,MotionJpeg/MKV:Xvid,AVC,MPEG4,VP8.HEVC/WEBM:VP8/3GPP:MPEG4,AVC/MP3/ASF(WMA)/LPCM/WAV/MP4AAC/FLAC/JPEG,WEBM:VP9/AC4/ogg/AAC/ARW(Screen nail only)		
	HDMI-CEC	Yes		
	i-Manual	Yes		
	Sleep Timer	Yes		
	On/Off Timer	Yes		
	Display Language	AFR,AMH,ARA,ASM,AZE,BEL,BUL,BEN,BOS,CAT,CZE,DAN,DEU,GRE,ENG,SPA,EST,BAQ,PER,FIN,-FRA,GLG,GUJ,HIN,HRV,HUN,IND,ISL,ITA,HEB,JPN,KAZ,KAN,KOR,KIR,LAO,LIT,LAV,MAC,MAL,MON,MAR,-MAY,BUR,NOB,NEP,NLD,ORI,PAN,POL,POR,RUM,RUS,SOL,SLV,ALB,SRP,SWE,SWA,TAM,TEL,THA,T-GL,TUR,UKR,URD,UZB,VIE,zh_CN,zh_HK,zh_TW,ZUL		
Control Specs	IP Control	Yes		
	Pro Mode	No		
Inputs and outputs	HDMI Signal	4096x2160p(24,50,60Hz), 3840x2160p(24,25,30,50,60,100,120Hz)*1, 1080p (30,50,60,100,120Hz), 1080/24p, 1080i(50,60Hz), 720p(30,50,60Hz), 720/24p, 576p, 480p		
	HDCP	HDCP2.3(for HDMI1.2/3/4)		
	RF (Terrestrial/Cable) Connection Input(s)	1(Bottom)		
	IF (Satellite) Input(s)	2(Bottom)		
	Composite Video Input(s)	Hybrid w/S-Center Speaker Input x1(Side, Mini jack)		
	HDMI inputs total	4(1Side,3Bottom)		
	USB ports	1(Side)/1(Bottom)		
	Ethernet inputs	1(Bottom)		
	RS-232C Input(s)	No		
	PCMCIA Slot(s)	1(side)		
Audio Specifications	Speaker Position	Front + Side Back		
	Audio Power Output	10W + 10W + 10W + 10W + 10W + 10W		
Video Specifications	Wide Mode	Wide Zoom/Normal/Full/Zoom/14:9		
	4:3 Default	Yes		
	Video Processing	XR 4K Upscaling		
	4K Processor	Cognitive Processor XR		
	Motion enhancer	XR Motion Clarity, Auto mode		
	HDR (High Dynamic Range) compatibility	Yes(HDR10,HLG,Dolby Vision)		
Panel Refresh Rate (Native Hertz)	100Hz			
Design Features	Cable Management	Yes		
	Frame color	Titanium Silver		
	Stand Design	Aluminum Edge Stand		
	VESA® Hole Spacing Compatible	Yes		
	VESA® Hole Pitch(W x H)	30.0 x 30.0 cm		40.0 x 40.0 cm
Eco & energy saving	Rated Power Consumption	380 W	433 W	516 W
	Power Consumption (in Standby)	0.50W		
	Mercury content(mg)	0.0		
	Power Saving Mode / Back Light Off Mode	Yes		
Dimensions	Display only (W x H x D)	Approx. 144.3 x 83.5 x 6.0 (3.64) cm	Approx. 166.7 x 96.1 x 5.6 (3.46) cm	Approx. 188.9 x 108.6 x 5.6 (3.46) cm
	Display with Stand (W x H x D)	Approx. 144.3 x 84.6 x 34.3 cm	Approx. 166.7 x 97.2 x 39.1 cm	Approx. 188.9 x 109.7 x 45.0 cm
Weights (Approx.)	Display only	Approx. 32.1 kg	Approx. 42.7 kg	Approx. 53.2 kg
	Display with Stand (Standard position)	Approx. 33 kg	Approx. 44.1 kg	Approx. 54.7 kg
	Display with Stand	Approx. 43 kg	Approx. 57 kg	Approx. 67 kg
Optional accessories	Wallmount Bracket	SU-WL450(Terminal access limitation, refer to SU-WL450 product page), SU-WL850(Refer to Country/Area Handling Chart)		
Service and Warranty	Standard Warranty	3 Years with advanced exchange handled by local partner, on premise where possible		

*1 100Hz and 120Hz is supported by HDMI IN 3 and IN 4

W80M



FWD-32W800


Display features	Screen Size (inch, measured diagonally)	32" (31.5")
	Display resolution (H x V, pixels)	1366x768
	Dimming type	Frame Dimming
	Display device	LCD
	Backlight type	Direct LED
	Aspect Ratio	16:9
	Brightness (cd/m ²)	380
	Native contrast ratio	1200:1
Dynamic contrast ratio	1200:1	
Professional features	Operating System	Android 10
	On-board Storage (GB)	8GB
Display System	TV System (Digital Terrestrial)	DVB-T/T2
	TV System (Digital Cable)	DVB-C
	TV System (Digital Sat)	DVB-S/S2
	Number of Tuners (Terrestrial/Cable)	1(Digital/Analog)
Number of Tuners (Sat)	1	
Network Features	Wi-Fi Certified	Yes
	Wireless LAN	Integrated
Convenience features	HDMI-CEC	Yes
	i-Manual	Yes
	On Screen Clock	Yes
	On/Off Timer	Yes
	USB playback codecs	VP9/H.265/MPEG1/MPEG2/MPEG4/DivX/XviD/Sorenson
	On/Off Timer	Yes
Display Language	ALB, MAY, BUL, CAT, DEU, HRV, CZE, DAN, DUT, ENG, EST, FIN, FRA, GLE, GLG, DRE, HEB, HUN, IND, ITA, KAZ, MAC, LAV, LIT, NOB, POL, POR, RON, VIE, RUS, SRP, SLK, SLV, SPA, SWE, THA, TUR, UKR, zh_CN, zh_TW, VIE	
Control Specs	IP Control	-
	Pro mode	-
Inputs and outputs	HDMI Signal	1080p(30,50,60Hz), 1080/24p, 1080i(50,60Hz), 720p(50,60Hz),576p, 576i, 480p, 480i
	HDCP	HDCP1.4
	RF (Terrestrial/Cable) Connection Input(s)	1(Bottom)
	IF (Satellite) Input(s)	-
	Composite Video Input(s)	-
	HDMI inputs total	3(1Side, 2Bottom)
	USB ports	1(Side / Bottom)
	Ethernet inputs	1(Bottom)
	HDMI PC Input Format	640x480(31.5kHz,60Hz), 800x600(37.9kHz,60Hz), 1024x768(48.4kHz,60Hz), 1360x768(47.7kHz,60Hz)
PCMCIA Slot(s)	1(Side)	
Audio Specs	Speaker Position	Down Firing
	Audio Power Output	5W + 5W
Video Specs	Wide Mode	Automatic, Full, Wide screen, Suprt Zoom, Unscaled, 4:3, Movie expand 14:9, Movie expand 16:9
	4:3 Default	-
	Video Processing	Yes
	4K Processor	Bravia Engine
HDR (High Dynamic Range) compatibility	Yes (HDR10, HLG)	
Design features	Cable Management	-
	Frame color	Black
	Stand Design	Slim Stand
	VESA® Hole Spacing Compatible	Yes
VESA® Hole Pitch (W x H)	10.0 x 20.0 cm	
Environment specs	Power Consumption	Rated: 60W
	Power Consumption (in Standby)	0.50W
	Mercury content(mg)	0.0
	Power Saving Mode / Back Light Off Mode	Yes
Measurements (W x H x D) Approx.	Display only (W x H x D)	Approx. 73.3 x 44.2 x 7.8 cm
	Dimension of TV with Stand	Approx. 73.3 x 46.8 x 18.9 cm
Weight Approx.	Display only	Approx. 4.9 Kg
	Display with Stand	Approx. 5.0 Kg
	Weight of Package Carton (Gross)	Approx. 7 kg
Optional Accessories	Wallmount Bracket	SU-WL450(Terminal access limitation, refer to SU-WL450 product page)
Service and Warranty	Standard Warranty	3 Years with Repair or if necessary advanced exchange handled by local partner, on premise where possible' everywhere
	2 years PrimeSupport extension reference	PSP.FWD32W800.2X


© 2022 Sony Corporation.


All rights reserved. Reproduction in whole or in part without permission is prohibited. Features and specifications are subject to change without notice. All non-metric weights and measurements are approximate. 'Sony' and their logos are registered trademarks or trademarks of Sony Corporation. All other logos and trademarks are the property of their respective owners.

Errors and omissions excepted.

www.pro.sony

 Sony Professional Displays & Solutions

 Sony Professional Displays & Solutions

 Sony Professional Corporate Solutions

SONY