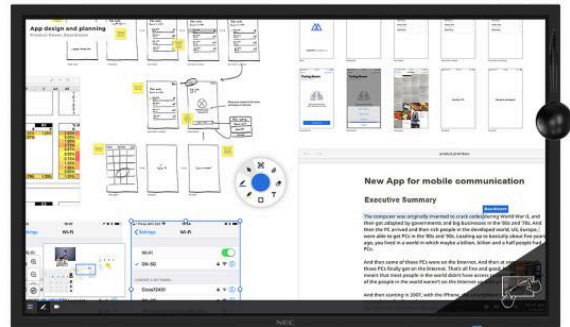
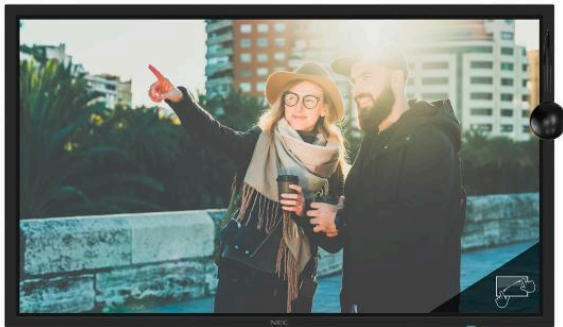


MultiSync® C861Q SST (ShadowSense) LCD 86" Ultra-High Definition Large Format Touch Display

Datasheet



Give your meeting room a bright new touch

Enhance your meeting and conferencing performance with stunning UHD resolution. Get high-end quality and reliability at a low total cost of ownership, with long life-times.

The ShadowSense™ Technology gives you the freedom to throw open the blinds and let the daylight enrich your meeting – even in direct sunlight the precise touch interface functions perfectly without ghost touches. Meanwhile, the anti-glare coating minimizes disturbing reflections and helps to eliminate annoying fingerprints on the touch surface. The design of the touch frame brings a modern styling to ShadowSense™ Touchscreens, whilst the precision pen the user an even better writing experience. Add the Mosaic Canvas software for whiteboarding and sketching capability to deliver the perfect interactive meeting solution. When adding an OPS Slot-in PC, an NEC Soundbar and Huddly GO wide screen camera, your collaborative meeting solution is ready to boost creativity and efficiency in your meeting rooms.

All NEC SST touch displays come with an NEC SST Pen and Eraser Kit.

Benefits

Seamless Touch Integration – work hand-in-hand with multi-touch applications while using the 10 touch points of ShadowSense™ touch technology in real-time collaboration.

Simple Plug & Play – easy set-up without the need to install any drivers on the host PC for all major operating systems.

Avoid Touch Frustration – satisfy users with the highest touch point accuracy, filtering out misleading touch-sizes and avoiding ghost touches even in high ambient light operation.

Intuitive Touch Behaviour – enjoy intuitive working and let the display automatically detect and switch between interactions like finger whipping, stylus writing and erasing.

Future-proof connectivity and processing – enjoy latency-free touch experience with 60 Hz refresh rates at numerous native UHD inputs including the OPS option slot.

Cost Saving Device Management – save effort whilst managing all connected NEC devices from a centralised location by using the NaViSet Administrator 2 software tool.

Product Information

Product Name	MultiSync® C861Q SST (ShadowSense)
Product Group	LCD 86" Ultra-High Definition Large Format Touch Display
Order Code	60004576

Display

Panel Technology	IPS with Edge LED backlights
Active Screen Area (W x H) [mm]	1,895 x 1,065.9
Screen Size [inch/cm]	86 / 217
Brightness [cd/m ²]	350, 254 (shipment setting)
Contrast Ratio (typ.)	1200:1
Viewing Angle [°]	178 / 178 (at contrast ratio > 10:1)
Colour Depth [bn]	1.073 (10bit)
Response Time (typ.) [ms]	8 (grey-to-grey)
Haze Level [%]	Pro (28)
Supported Orientation	Landscape; Portrait

Synchronisation Rate

Horizontal Frequency [kHz]	31.5 - 91.1
Vertical Frequency [Hz]	24 - 85

Resolution

Native Resolution	3840 x 2160
Supported Resolutions	4096 x 2160; 3840 x 2160; 1920 x 2160; 1920 x 1080

Connectivity

Input Video Digital	2 x DisplayPort (with HDCP); 3 x HDMI (with HDCP)
Input Audio Analogue	1 x 3,5 mm jack
Input Audio Digital	2 x DisplayPort; 3 x HDMI
Input Control	1 x LAN 100Mbit; 1 x Remote Control (3.5 mm jack); 1 x RS232
Input Data	1 x microSD (Value); 1 x USB 2.0 (Downstream); 1 x USB 2.0 (MediaPlayer); 1 x USB Type-B (Upstream); 2 x USB 2.0 (Compute Module, 1 x 5V/2A powered)
Output Video Digital	1 x DisplayPort (loop through: DisplayPort, OPS slot-in PC)
Output Audio Analogue	1 x 3,5 mm jack
Output Control	1 x LAN 100Mbit

Open Modular Intelligence

OPS Slot	Slot Technology: Open pluggable specification (NEC / Intel OPS standard)
OPS Max. Current / Power Consumption [A / W]	4.7 / 75
Compute Module Slot	Slot Technology: Compute Module Slot (NEC proprietary standard)

Sensors

Human Sensor	Optional, external, 4-5m range, triggered actions programmable
Temperature Sensor	Integrated, 3 sensors, triggered actions programmable
NFC Sensor	Integrated, 2cm range, free NEC Android App required

Electrical

Power Consumption [W]	242 Eco (shipment setting), 312
Power Savings Mode [W]	< 0.5; < 2 (Networked Standby)
Power Management	VESA DPMS

Environmental Conditions

Operating Temperature [°C]	+0 to +30
Operating Humidity [%]	20 to 80

Mechanical

Dimensions (W x H x D) [mm]	Without stand: 2,001.5 x 1,170 x 92
Weight [kg]	90
Bezel Width [mm]	34.1 (top and bottom); 35.5 (left and right)
VESA Mounting [mm]	4 holes; 400 x 400 (FDMI); 600 x 400 (FDMI); M8
Ingress Protection	IP5x (front); IP2x (back)

Glass

Thickness [mm]	5
Type	Premium toughened glass, single sided anti-reflective coating
Light Transmission [%]	92 (+/- 2 %)

Touch

Touch Technology	ShadowSense™ Touch
Number of Touches	Real multi-touch up to 10 touches
Response Time [ms]	6 to 8
Touch Method	Finger; Gloves; Stylus (≥ 2 mm)
Supported Operating System	Native Multi-Touch: Windows 7, Windows 8, Windows 10, Linux, Android; Default Mouse: Windows XP, Windows Vista, Mac OS X
Data Interface	USB 2.0 (full speed) HID; USB powered, plug & play
Accuracy [mm]	< 2
Touch Resolution	12-bit (4096 x 4096)
Ambient Light Rejection	Up to full sunlight (approx. 100000 lux)

MediaPlayer

Supported Image Formats	JPG (baseline, progressive, RGB, CMYK); max. resolution 5000 x 5000; PNG (interlace, alpha channel); max. resolution 4000 x 4000
Supported Video Formats	MP4 / MOV / FLV (video H.264, audio MP3, AAC); max. resolution 1080p at 30 Hz, 1080i at 60 Hz; MPG (video mpeg1/2, audio mpeg audio layer2/3, AAC-LC); MP @ ML, MP @ HL; WMV (video H.264, wmv advanced L3, wmv simple / main, audio mp3 wmv std); max. resolution 1080p at 30 Hz, 1080i at 60 Hz
Supported Audio Formats	MP3 (MP3); max. bit-rate 320 kBit/s; WAV (LPCM); max. 48 kHz sampling
Supported File Storage / File System	MicroSDHC / FAT16, FAT32; USB 2.0 / FAT16, FAT32

Available Options

Accessories	Feet (ST-801); Speaker (SP-TF1); Trolley (PD02MHA, PD03MHA); Wall mount (PDW T XL-2, BalanceBox650)
Compute Module Slot	NEC Compute Module; Raspberry Pi Compute Module 1 and 3
OPS Slot	HDBaseT receiver; Intel® Atom, Celeron and Core CPUs; OPS-2C Quad 3G SDI

Green Features

Energy Efficiency

Annual energy consumption: 372 kWh (based on 4 operating hours per day); Carbon savings meter; ECOMode; Energy efficiency class: B; Local dimming

Additional Features

Special Characteristics	12-bit Look Up table; AMX NetLinx Support; ASCII Control Commands; Auto ID assignment; Auto tiling function; Automated Email Alert; CEC Support; Crestron Connected Support; DICOM Simulation; Display Browser Control; Emergency Notification; HDMI with UHD at 60 Hz; HDR Gamma Support (HLG, PQ); KeyGuide; MediaPlayer with Browser Control; NaViSet Administrator 2; OmniColor Control; OSD rotation for portrait mode; PIN as theft protection; PLink Support; Powered USB-Port; Removable Logo; Scheduler; Slim LED Indicator; SNMP Support; TileMatrix (10 x 10); User readable log function
Colour Versions	colour variations available on request
Safety and Ergonomics	CE; RoHS
Audio	Integrated Speakers (10 W + 10 W); Optional Speakers (15 W + 15 W)
Shipping Content	CD-ROM (User Guides/Manuals); Display; DisplayPort Cable; Remote Control; USB cable
Warranty	optional 4. + 5. year warranty extension
Operating Hours	24/7



CE



RoHS

This document is © 2018 NEC Display Solutions Europe GmbH.

All rights reserved in favour of their respective owners. All hardware and software names are brand names and/or registered trademarks of the respective manufacturers. All specifications are subject to change without notice. Errors and omissions are excepted. 07.12.2018