

# ROG-STRIX-GTX1650-4G-GAMING

## TAKE FLIGHT

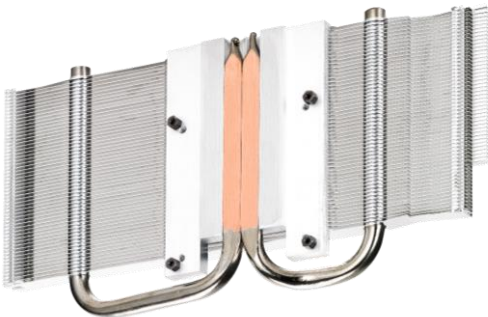
### ASUS Exclusive Innovations

- The **ROG Strix GeForce® GTX 1650** is built with the breakthrough graphics performance of the award-winning **NVIDIA Turing™ architecture** to supercharge your favorite games.
- Get **game ready** with performance that's twice as fast as the GeForce GTX 950 and up to 70% faster than the GTX 1050.
- **GeForce Experience** lets you capture and share videos, screenshots, and livestreams with friends, keep GeForce drivers up to date, and easily optimize your in-game settings.



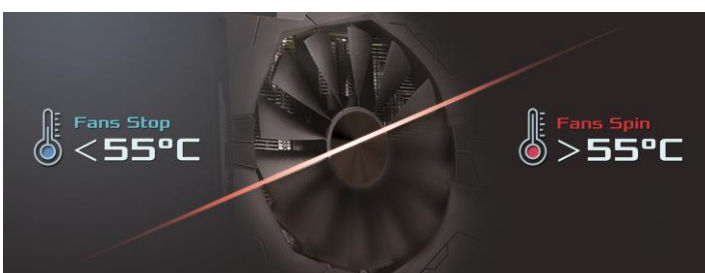
#### ■ DirectCU II

Copper heatpipes make direct contact with the die for improved thermal transfer.



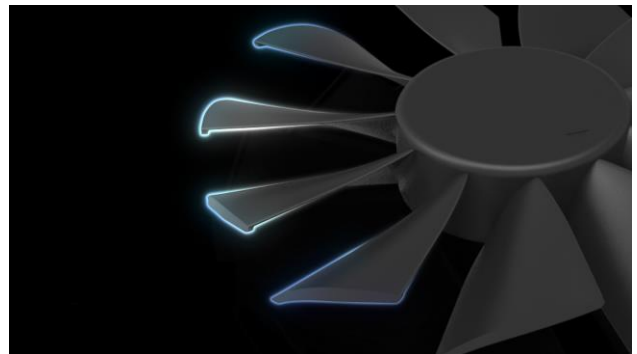
#### ■ 0dB Technology

An advanced controller brings fans to a standstill below 55 Celsius, letting you enjoy light gaming in relative silence.



#### ■ Wing-blade Fan Design

Drooped tips on each blade reduce drag.



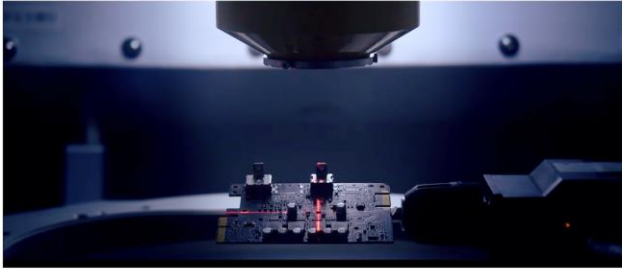
#### ■ ASUS FanConnect II

A hybrid-controlled fan header enables optimal system cooling.



## ■ Auto-Extreme Technology

An automated manufacturing process that enhances reliability.



## ■ ASUS Aura Sync

Customize and sync lighting effects with other compatible hardware.



### **Stealth mode**

A button on the back, you can just turn off all the lights.

## ASUS Features

**4GB** GDDR5  
Memory

● **4GB GDDR5 Memory:**  
On-board memory for the best gaming experience & the best resolution.

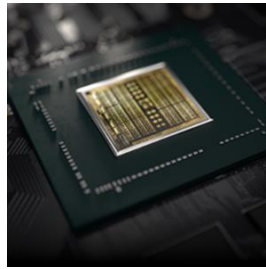
**GPU Tweak II**  
Real-time Graphics Tuning and Live Streaming

● **Software Suite:**  
Tweak performance with GPU Tweak II, stream games with XSplit Gamecaster, get a better connection to game servers with wtfast, and earn passive income with Quantumcloud.



\*Free 14-day premium XSplit Gamecaster.  
\*Six-month wtfast premium license\* — a USD\$53.95 value — to let user enjoy online gaming that's free from lag, latency and lost packets.

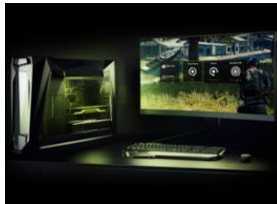
## Graphics GPU Features



● **TURING SHADERS:**  
Featuring concurrent execution of floating point and integer operations, adaptive shading technology, and a new unified memory architecture with twice the cache of its predecessor, NVIDIA Turing™ shaders enable awesome performance increases in today's games.



● **AWESOME PERFORMANCE:**  
Easily upgrade your PC and get game ready with performance that's twice as fast as the GeForce GTX 950 and up to 70% faster than the GTX 1050 in the latest games.

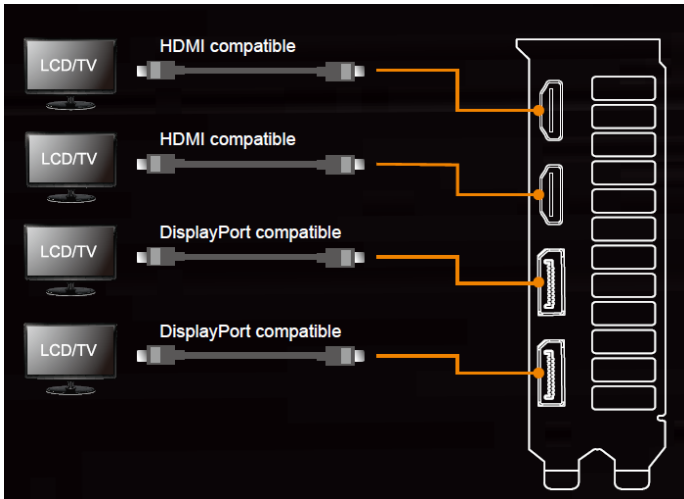


● **GEFORCE EXPERIENCE:**  
GeForce Experience™ is the essential companion to your GeForce graphics card. Capture and share videos, screenshots, and livestreams with friends, keep your GeForce drivers up to date, and easily optimize your in-game settings.



● **NVIDIA® ANSEL:**  
This powerful tool lets you take professional-grade screenshots of your games. Now, you can record and share your most brilliant gaming experiences with super-resolution, 360-degree, HDR, and stereoscopic capture modes.

## I/O Specifications



● **MORE CREATING, LESS WAITING:**  
Dedicated GPU power accelerates the creative apps you use every day. Combined with NVIDIA Creator Ready Drivers, you'll get additional performance and reliability to supercharge your creativity.



● **NVIDIA® G-SYNC™ TECHNOLOGY:**  
For the smoothest and fastest gaming imaginable, eliminating screen tearing and minimizing display stutter and input lag.

## Hardware Specification

Model	ROG-STRIX-GTX1650-4G-GAMING
Graphics Engine	NVIDIA® GeForce® GTX 1650
CUDA cores	896
OpenGL	OpenGL® 4.5
Engine Clock	OC mode : 1695 MHz (Boost Clock) 1485 MHz (Base Clock) Gaming mode : 1665 MHz (Boost Clock) 1485 MHz (Base Clock)
Memory Interface	128 bit
Video Memory	4GB GDDR5
Memory Clock	8002 MHz
Power connectors	1*6pin
I/O	2x Native HDMI 2.0b 2x Native DisplayPort 1.4
HDCP compliant	HDCP 2.2
Digital Max Resolution	7680 x 4320
Maximum Display Support	4
SLI / Crossfire Support	N/A
Recommended PSU	300W
Accessory Bundled	1x ROG Velcro Hook & Loop
Bus Standard	PCIE 3.0
Dimension	The card size is 24.2*12.7*3.84 cm The card size is 9.52*5*1.51 inches
Software Bundled	ASUS GPU Tweak II & Driver
Slot	2 slots
Note	<ul style="list-style-type: none"> <li>Specifications are subject to change without notice.</li> <li>PCB color and bundled software versions are change without notice.</li> <li>Brand and product names mentioned are trademarks of their respective company.</li> </ul>

