



# User Guide

## **SUMMARY**

This guide provides technical specifications and information about monitor features, setting up the monitor, and using the monitor.

## Legal information

© Copyright 2021 HP Development Company, L.P.

AMD® is a trademark of Advanced Micro Devices, Inc. HDMI™, the HDMI™ Logo and High-Definition Multimedia Interface™ are trademarks or registered trademarks of HDMI Licensing LLC. Windows is either a registered trademark or trademark of Microsoft Corporation in the United States and/or other countries. DisplayPort™, the DisplayPort™ logo, and VESA® are trademarks or registered trademarks owned by the Video Electronics Standards Association (VESA) in the United States and other countries. USB Type-C® and USB-C® are registered trademarks of USB Implementers Forum. Eyesafe® is a trademark of Eyesafe Inc.

The information contained herein is subject to change without notice. The only warranties for HP products and services are set forth in the express warranty statements accompanying such products and services. Nothing herein should be construed as constituting an additional warranty. HP shall not be liable for technical or editorial errors or omissions contained herein.

### Product notice

This guide describes features that are common to most models. Some features may not be available on your product. To access the latest user guide, go to <http://www.hp.com/support>, and follow the instructions to find your product. Then select **Manuals**.






First Edition: July 2021

Document part number: M82047-001

---

# About this guide

This guide provides technical specifications and information about monitor features, setting up the monitor, and using the software. Depending on the model, your monitor may not have all the features included in this guide.

- 
-  **WARNING!** Indicates a hazardous situation that, if not avoided, **could** result in serious injury or death.
  -  **CAUTION:** Indicates a hazardous situation that, if not avoided, **could** result in minor or moderate injury.
  -  **IMPORTANT:** Indicates information considered important but not hazard-related (for example, messages related to property damage). Warns the user that failure to follow a procedure exactly as described could result in loss of data or in damage to hardware or software. Also contains essential information to explain a concept or to complete a task.
  -  **NOTE:** Contains additional information to emphasize or supplement important points of the main text.
  -  **TIP:** Provides helpful hints for completing a task.
- 



This product incorporates HDMI technology.



---

# Table of contents

<b>1 Getting started</b>	<b>1</b>
Important safety information	1
More HP resources	2
Preparing to call technical support	2
Getting to know your monitor	2
Features	2
Rear components	3
Locating the serial number and product number	4
Setting up the monitor	5
Attaching the monitor stand	5
Routing the cables	6
Mounting the monitor head	6
Removing the monitor stand	6
Attaching the monitor head to a mounting device	7
Connecting the cables	8
Connecting USB devices	10
Adjusting the monitor	10
Installing a security cable	11
Turning on the monitor	11
HP watermark and image retention policy	12
<b>2 Using the monitor</b>	<b>13</b>
Downloading software and utilities	13
Downloading OMEN Gaming Hub	13
The Information file	13
The Image Color Matching file	14
Using the OSD menu	14
Selecting color presets	15
Using RGB Gain Adjust	16
Using Auto-Sleep Mode (select products only)	16
Using PiP and PbP (select products only)	16
<b>3 Support and troubleshooting</b>	<b>17</b>
Solving common issues	17
Button lockouts	18
<b>4 Maintaining the monitor</b>	<b>19</b>
Maintenance guidelines	19
Cleaning the monitor	19
Shipping the monitor	20

<b>Appendix A Technical specifications .....</b>	<b>21</b>
68.5 cm (27 in) model specifications.....	21
Preset display resolutions .....	21
68.5 cm (27 in) model .....	22
Enhanced-definition and high-definition video formats .....	23
Power supply specification .....	23
<b>Appendix B Accessibility .....</b>	<b>24</b>
HP and accessibility .....	24
Finding the technology tools you need .....	24
The HP commitment .....	24
International Association of Accessibility Professionals (IAAP) .....	25
Finding the best assistive technology .....	25
Assessing your needs .....	25
Accessibility for HP products .....	25
Standards and legislation.....	26
Standards .....	26
Mandate 376 – EN 301 549.....	26
Web Content Accessibility Guidelines (WCAG) .....	26
Legislation and regulations .....	27
Useful accessibility resources and links .....	27
Organizations.....	27
Educational institutions.....	27
Other disability resources.....	28
HP links .....	28
Contacting support .....	28
<b>Index .....</b>	<b>29</b>

---

# 1 Getting started

Read this chapter to learn about safety information and where to find additional HP resources.

## Important safety information

An AC adapter and power cord might be included with the monitor. If you use another cord, use only a power source and connection appropriate for this monitor. For information about the correct power cord set to use with the monitor, see the *Product Notices* provided in your documentation kit.

---

 **WARNING!** To reduce the risk of electric shock or damage to the equipment:


- Plug the power cord into an AC outlet that is easily accessible at all times.
- If the power cord has a three-pin attachment plug, plug the cord into a grounded (earthed) three-pin outlet.
- Disconnect power from the computer by unplugging the power cord from the AC outlet. When unplugging the power cord from the AC outlet, grasp the cord by the plug.

---

For your safety, do not place anything on power cords or cables. Take care to route all cords and cables connected to the monitor so that they cannot be stepped on, pulled, grabbed, or tripped over.

To reduce the risk of serious injury, read the *Safety & Comfort Guide* provided with your user guides. It describes proper workstation setup and proper posture, health, and work habits for computer users. The *Safety & Comfort Guide* also provides important electrical and mechanical safety information. The *Safety & Comfort Guide* is also available on the web at <http://www.hp.com/ergo>.


---


 **IMPORTANT:** For the protection of the monitor and the computer, connect all power cords for the computer and its peripheral devices (such as a monitor, printer, scanner) to a surge protection device such as a power strip or uninterruptible power supply (UPS). Not all power strips provide surge protection; the power strip must be specifically labeled as having this capability. Use a power strip whose manufacturer offers a damage replacement policy so that you can replace the equipment if surge protection fails.


---


Use the appropriate and correctly sized furniture designed to properly support your monitor.

---

 **WARNING!** Monitors that are inappropriately situated on dressers, bookcases, shelves, desks, speakers, chests, or carts could fall over and cause personal injury.

 **WARNING! Stability hazard:** The device might fall, causing serious personal injury or death. To prevent injury, securely attach the monitor to the floor or wall in accordance with the installation instructions.

 **WARNING!** This equipment is not suitable for use in locations where children are likely to be present.

 **NOTE:** This product is suitable for entertainment purposes. Consider placing the monitor in a controlled luminous environment to avoid interference from surrounding light and bright surfaces that might cause disturbing reflections from the screen.

---

## More HP resources

Use this table to locate resources that provide product details, how-to information, and more.

**Table 1-1 Additional information**

Resource	Contents
Setup Instructions	Overview of monitor setup and features
HP support	<p>For HP support or to resolve a hardware or software problem, go to <a href="http://www.hp.com/support">http://www.hp.com/support</a>, and follow the instructions to find your product.</p> <p>– or –</p> <p>Type <b>support</b> in the taskbar search box, and then select <b>HP Support Assistant</b>. Then select <b>Support</b>.</p> <p>– or –</p> <p>Select the question mark icon in the taskbar search box.</p> <p>Then select <b>Support</b>.</p>

**NOTE:** Contact customer support to replace the power cord, the AC adapter (select products only), or any other cables that shipped with your monitor.

## Preparing to call technical support

Use this information if you have to troubleshoot an issue.

If you cannot solve a problem using [Support and troubleshooting on page 17](#), a call to technical support can provide additional help. Have the following information available when you call.

- Monitor model number
- Monitor serial number
- Purchase date on invoice
- Conditions under which the problem occurred
- Error messages received
- Hardware configuration
- Name and version of the hardware and software that you are using

## Getting to know your monitor

Your monitor has top-rated features. This section provides details about your components, where they are located, and how they work.

### Features

Depending on the model, your monitor might include the following features:



## Display features

- Three-sided borderless 68.5 cm (27 in) curved monitor with 2560 × 1440 @ 240 Hz (DP) or 144 Hz (HDMI) resolution, plus full-screen support for lower resolutions; includes custom scaling for maximum image size while preserving original aspect ratio
- Liquid crystal display (LCD) with active matrix and vertical alignment (VA)
- Wide color gamut to provide coverage of DCI-P3 color spaces
- Antiglare panel with an LED backlight
- HP Eye Ease with Eyesafe® certification (default mode) to reduce blue light to keep your eyes comfortable
- Flicker-free feature for optimal eye comfort and viewing
- Wide viewing angle to allow viewing from a sitting or standing position, or moving from side to side
- Height and tilt adjustment capability
- On-screen display (OSD) adjustments in several languages for easy setup and screen optimization
- Color space presets for DCI-P3 (Gaming mode) and sRGB (Standard mode)
- Security cable slot on the rear of the monitor for an optional security cable

## Connectors

- DisplayPort™ video input (cable included)
- High-Definition Multimedia Interface™ (HDMI) video input
- Audio-out (headphone) jack
- USB Type-C® port (data only)
- USB Type-A-to-USB Type-C cable and DisplayPort cable provided
- Plug and Play capability, if supported by your operating system

## Monitor stand

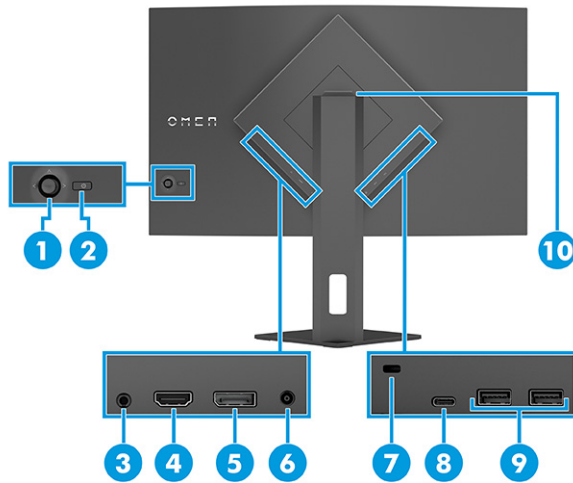
- Removable stand for flexible monitor head mounting solutions
- VESA® mounting capability (100 × 100 mm) for attaching the monitor to a swing arm mount



**NOTE:** For safety and regulatory information, see the *Product Notices* provided in your documentation kit. To access the latest user guide, go to <http://www.hp.com/support>, and follow the instructions to find your product. Then select **Manuals**.

## Rear components

To identify the components on the rear of the monitor, use these illustrations and tables.



**Table 1-2 Rear components and their descriptions**

Component	Description
(1) OSD controller	Opens the OSD menu and makes adjustments to monitor settings.
(2) Power button	Turns the monitor on or off.
(3) Audio-out (headphone) jack	Connects headphones or earbuds.  <b>CAUTION:</b> To reduce the risk of personal injury, adjust the volume before using headphones or earbuds. For additional safety information, see the <i>Product Notices</i> provided in your documentation kit.
(4) HDMI port	Connects the HDMI cable to a source device such as a computer or game console.
(5) DisplayPort connector	Connects the DisplayPort cable to a source device such as a computer or game console.
(6) Power connector	Connects an AC adapter.
(7) Security cable slot	Connects an optional security cable.
(8) USB Type-C port	Connects a USB Type-C cable to a source device such as a computer or game console.  This port only enables the USB Type-A ports to perform their functions.
(9) USB Type-A ports	Connects a USB cable to a peripheral device, such as a keyboard, mouse, or USB flash drive.
(10) Headphone storage	The monitor features a headphone hook at the top of the stand for convenient headphone storage.

## Locating the serial number and product number

Depending on the product, the serial number and product number are located on a label on the rear of the monitor or on a label under the front bezel of the monitor head. You might need these numbers when contacting HP for support.



## Setting up the monitor

This section describes attaching the monitor stand or wall mount and the options for connecting your monitor to a PC, notebook, gaming console, or similar device.

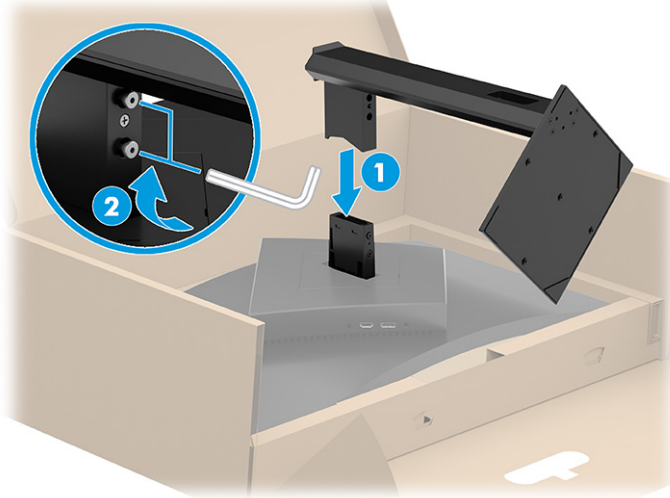
- 
- ⚠ WARNING!** To reduce the risk of serious injury, read the *Safety & Comfort Guide*. It describes proper workstation setup and proper posture, health, and work habits for computer users. The *Safety & Comfort Guide* also provides important electrical and mechanical safety information. The *Safety & Comfort Guide* is available on the web at <http://www.hp.com/ergo>.
  - 📝 IMPORTANT:** To prevent damage to the monitor, do not touch the surface of the LCD panel. Pressure on the panel can cause nonuniformity of color or disorientation of the liquid crystals. If this occurs, the screen will not recover to its normal condition.
  - 📝 IMPORTANT:** To prevent the screen from getting scratched, defaced, or broken and to prevent damage to the control buttons, position the monitor facedown on a flat surface covered with protective sheet foam or a nonabrasive cloth.
- 

## Attaching the monitor stand

Correctly attaching your monitor stand is critical for safe use. This section describes how to safely attach a stand.

- 
- 💡 TIP:** Consider the placement of the monitor, because surrounding light and bright surfaces might cause interfering reflections.
  - 📝 NOTE:** The procedures for attaching a monitor stand might be different on other models.
-

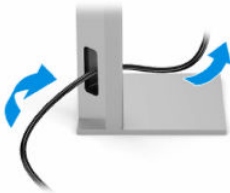
- ▲ Position the monitor head facedown and attach the stand to the back of the monitor head (1); secure it with the screws (2).



## Routing the cables


The monitor stand includes a cable management feature that you can use to organize your monitor cables.

- ▲ Route any cables that you want to organize through the stand and connect them to the appropriate connectors on the rear of the monitor.



## Mounting the monitor head


To attach your monitor to a wall using a swing arm or other mounting fixture, follow the steps in this section to safely and securely connect your monitor.


 **IMPORTANT:** This monitor supports the VESA industry-standard 100 mm mounting holes. To attach a third-party mounting solution to the monitor head, use four 4 mm, 0.7 pitch, and 10 mm long screws. Longer screws might damage the monitor. Be sure that the manufacturer's mounting solution is compliant with the VESA standard and is rated to support the weight of the monitor head. For best performance, use the power and video cables provided with the monitor.

 **NOTE:** This apparatus is intended to be supported by a UL-listed or CSA-listed wall-mount bracket.

## Removing the monitor stand

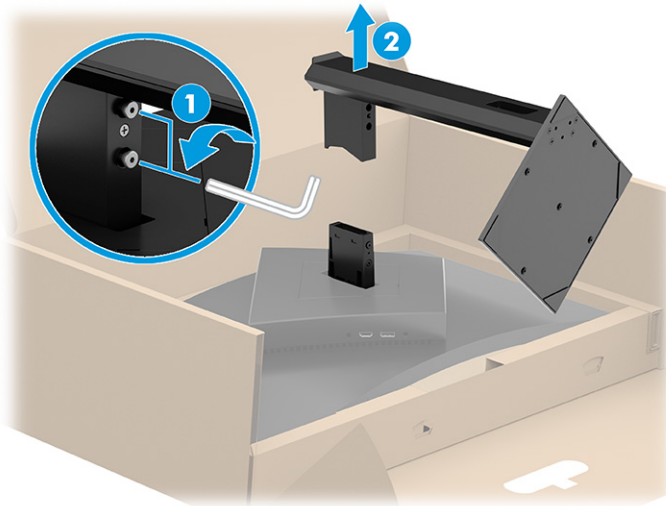
If you decide to use a wall mount instead of the monitor stand that you attached, first remove the stand.

 **IMPORTANT:** Before you disassemble the monitor, be sure that the monitor is turned off and all cables are disconnected.

 **IMPORTANT:** To position and stabilize the monitor, HP recommends that two people perform these procedures.

---

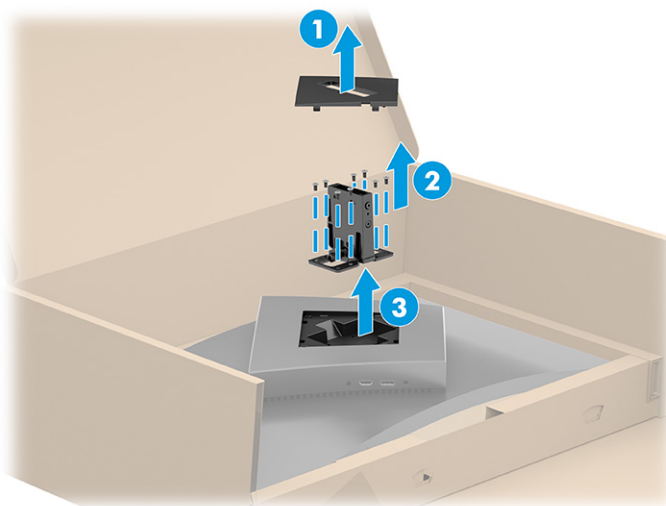
1. Place the monitor head facedown in the box, never on a flat surface.
2. Loosen the screws near the bottom center of the stand's mounting plate (1).
3. Lift the stand from the monitor head (2).



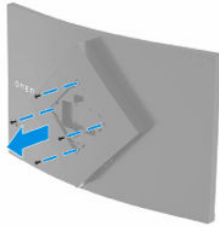
### Attaching the monitor head to a mounting device

You might need additional tools such as a screwdriver (purchased separately) when you attach a mounting device. To avoid damage to your monitor, follow these instructions.

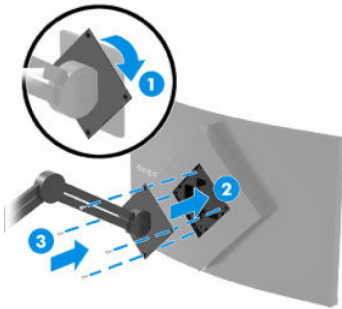
1. Remove the monitor stand if it is attached. See [Removing the monitor stand on page 6](#).
2. Use a flathead screwdriver to pry open the VESA cover on the back of the monitor, and remove the VESA cover (1).
3. Use a screwdriver to remove the six screws that hold the hinge in place (2), and then remove the hinge (3).




4. Remove the four screws from the VESA holes located on the back of the monitor and use them to attach the mounting device as indicated in step 6.



5. On the swing arm, rotate the VESA adapter to 45° to line up with the screw holes on the rear of the monitor (1) before attaching it to the monitor.
6. With the VESA adapter rotated to 45°, insert the VESA adapter into the slot on the rear of the monitor head (2). Then secure the adapter to the monitor head by inserting the four VESA screws into the screw holes on the adapter and monitor head and tightening them (3). Be sure that the adapter is properly secured to the monitor head before use.




---

 **IMPORTANT:** If these instructions do not apply to your device, then follow the mounting device manufacturer's instructions when mounting the monitor to a wall or swing arm.

---

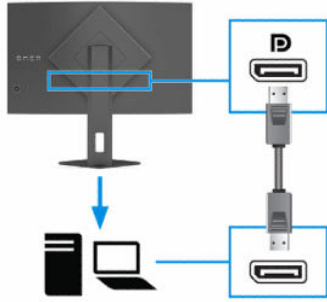
## Connecting the cables

In addition to details about how to connect a cable, this section contains information about how your monitor functions when you connect certain cables.

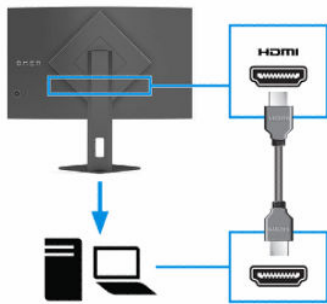
 **NOTE:** Depending on the model, the monitor might be capable of supporting HDMI or DisplayPort inputs. The video mode is determined by the video cable used. The monitor automatically determines which inputs have valid video signals. You can select the inputs through the OSD menu. The monitor ships with select cables. Not all cables shown in this section are included with the monitor.


---

1. Place the monitor in a convenient, well-ventilated location near the computer.
2. Connect a video cable.
  - Connect one end of a DisplayPort cable to the DisplayPort connector on the rear of the monitor and the other end to the DisplayPort connector on the source device.

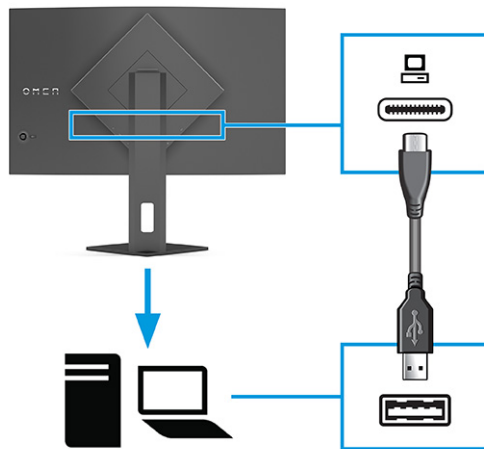


- Connect one end of an HDMI cable to the HDMI port on the rear of the monitor and the other end to the HDMI port on the source device.



3.  **NOTE:** You must connect the USB Type-C cable from the source device (computer) to the rear of the monitor to enable the two USB Type-A ports to serve as a USB hub for a mouse, keyboards, phones, external hard drives, and practically anything that is USB connected and can accept 5 V.

Connect one end of a USB cable to a USB port on the monitor and the other end to the USB port on the source device.



4. Connect one end of the power cord to the AC adapter (1) and the other end to a grounded AC outlet (2). Then connect the AC adapter to the power connector on the monitor (3).

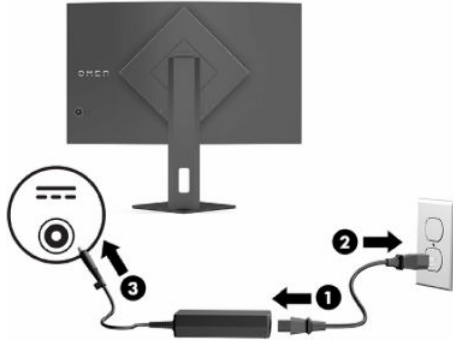
 **WARNING!** To reduce the risk of electric shock or damage to the equipment:

Do not disable the power cord grounding plug. The grounding plug is an important safety feature.

Plug the power cord into a grounded (earthed) AC outlet that is easily accessible at all times.

Disconnect power from the equipment by unplugging the power cord from the AC outlet.

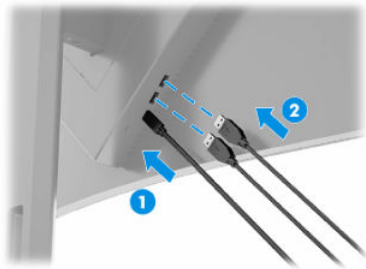
For your safety, do not place anything on power cords or cables. Arrange them so that no one can accidentally step on or trip over them. Do not pull on a cord or cable. When unplugging the power cord from the AC outlet, grasp the cord by the plug.



## Connecting USB devices

Use USB ports to connect devices such as a digital camera, USB keyboard, or USB mouse. There are two USB Type-A ports on the monitor to connect to a device (downstream).

**NOTE:** You must connect the USB Type-C cable from the source device (computer) to the rear of the monitor to enable the USB Type-A ports to serve as a USB hub for a mouse, keyboards, phones, external hard drives, and practically anything that is USB-connected and can accept 5 V.



**Table 1-3** USB port locations

USB Ports	
(1)	USB Type-C port from computer
(2)	USB Type-A ports

## Adjusting the monitor

To support an ergonomic work space, your monitor offers the adjustment options outlined in this section.

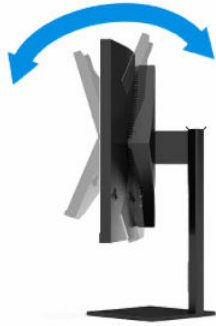
**WARNING!** To reduce the risk of serious injury, read the *Safety & Comfort Guide*. It describes proper workstation setup and proper posture, health, and work habits for computer users. The *Safety & Comfort*



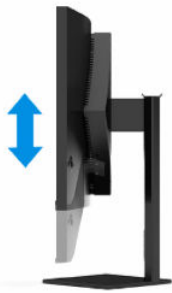
*Guide* also provides important electrical and mechanical safety information. The *Safety & Comfort Guide* is available on the web at <http://www.hp.com/ergo>.

---

1. Tilt the monitor head forward or backward to set it to a comfortable eye level.

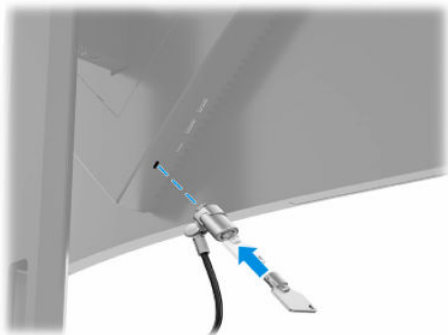


2. Adjust the monitor's height to a comfortable position for your individual workstation. The monitor's top bezel edge should not exceed a height that is parallel to your eye height. A monitor that is positioned low and reclined might be more comfortable for users with corrective lenses. Reposition your monitor as you adjust your working posture throughout the work day.



## Installing a security cable


As a security measure, you can secure the monitor to a fixed object with an optional security cable available from HP. Use the key that came with the optional security cable to attach and remove the lock.




## Turning on the monitor

This section provides important information about preventing damage to your monitor, startup indicators, and troubleshooting information.

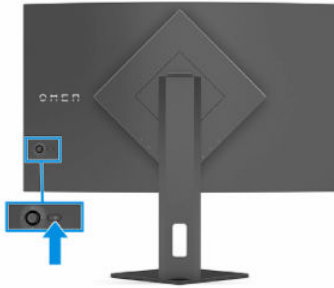
---

 **IMPORTANT:** Burn-in image damage might occur on monitors that display the same static image on the screen for 12 or more hours. To avoid burn-in image damage, you should always activate a screen saver application or turn off the monitor when it will not be in use for a prolonged period of time. Image retention is a condition that might occur on all LCD screens. Burn-in damage on the monitor is not covered under the HP warranty.

 **NOTE:** On select HP monitors, you can disable the power light in the OSD menu. Press the center of the OSD controller to open the OSD, select **Power**, select **Power LED**, and then select **Off**.

---

- ▲ Press the power button on the rear of the monitor to turn it on.



When you first turn on your monitor, a monitor status message is displayed for 5 seconds. The message shows which input is the current active signal, the status of the auto-switch source setting (On or Off; default setting is On), the current preset display resolution, and the recommended preset display resolution.

The monitor automatically scans the signal inputs for an active input and uses that input for the display.

## HP watermark and image retention policy

Some monitors are designed with VA display technology, which provides ultrawide viewing angles and advanced image quality. Though suitable for many applications, this panel technology is not suitable for static, stationary, or fixed images for long periods of time, unless you use screen savers.

Applications with static images can include camera surveillance, video games, marketing logos, and templates. Static images can cause image retention damage that could look like stains or watermarks on the monitor's screen.

Image retention damage on monitors that are in use 24 hours per day is not covered under the HP warranty. To avoid image retention damage, always turn off the monitor when it is not in use, or use the power management setting, if supported on your computer, to turn off the monitor when the computer is idle.

---

## 2 Using the monitor

This chapter describes how to use your monitor and its features, including software and utilities, the OSD menu, color presets, Auto-Sleep Mode, Picture in Picture (PiP), and Picture beside Picture (PbP).

### Downloading software and utilities

You can download and install these files from HP Support.

- INF (Information) file
- ICM (Image Color Matching) files

To download the files:

1. Go to <http://www.hp.com/support>.
2. Select **Software and Drivers**.
3. Select your product type.
4. Enter your HP monitor model in the search field, and follow the on-screen instructions.

### Downloading OMEN Gaming Hub

You can download and install OMEN Gaming Hub from the Microsoft Store app.



**NOTE:** Be sure to download OMEN Gaming Hub after you set up the monitor so that you can access all settings and features.

To download the application:

1. Select **Start** from the taskbar.
2. Select the **Microsoft Store** app.
3. Enter `OMEN Gaming Hub` in the search field, select **Get**.

### The Information file

The INF file defines monitor resources used by Windows® operating systems to ensure monitor compatibility with the computer's graphics adapter.

This monitor is Plug and Play compatible, and the monitor will work correctly without installing the INF file. Monitor Plug and Play compatibility requires that the computer's graphics card is VESA DDC2 compliant and that the monitor connects directly to the graphics card. Plug and Play does not work through separate BNC-type connectors or through distribution buffers, boxes, or both.

# The Image Color Matching file

The ICM files are data files that are used in conjunction with graphics programs to provide consistent color matching from monitor screen to printer or from scanner to monitor screen. These files are activated from within graphics programs that support this feature.



**NOTE:** The ICM color profile is written in accordance with the International Color Consortium (ICC) Profile Format specification.

## Using the OSD menu

You can adjust your HP monitor to suit your preferences. Use the OSD menu to customize the viewing features of your monitor.

To access and make adjustments in the OSD, use the OSD controller on the monitor's rear panel.

1. If the monitor is not already on, press the power button to turn on the monitor.
2. Press the center of the OSD controller.
3. Move the controller up, down, left, or right to navigate menu choices. Press the center of the controller to make a selection.

The following table lists possible menu selections in the OSD main menu. It includes descriptions for each setting and its impacts on your monitor's appearance or performance.

**Table 2-1** OSD menu options and descriptions

Main menu	Description
Gaming	Selects and adjusts gaming preferences, such as Adaptive-Sync or AMD® FreeSync Premium Pro, motion picture response time (MPRT), response time, edge precision, shadow vision, frame rate, crosshair, message timers, and multiple-monitor alignment.  <b>NOTE:</b> MPRT is disabled in the following conditions: <ol style="list-style-type: none"><li>1. HDR signal is active</li><li>2. Refresh rate &lt; 100 Hz</li><li>3. Adaptive-Sync or FreeSync is on</li></ol>
Image	Adjusts the screen image, including brightness, contrast, dynamic contrast, black stretch, sharpness, image scaling, video level, and overscan.  <b>NOTE:</b> Brightness and contrast are disabled when HDR signal inputs.  Dynamic contrast is disabled in the following conditions: <ol style="list-style-type: none"><li>1. HDR signal is active</li><li>2. MPRT is on</li></ol> Black stretch is disabled when the HDR signal is active.  Video level and overscan both function for HDMI only.
Color	Provides a variety of color presets that configure the monitor for different viewing situations, such as gaming, standard, warm, cool, native, night, HP Enhance +, and RGB gain adjust.
Input	Selects the video input signal (DisplayPort or HDMI). Adjusts PiP, auto-switch input, DisplayPort hot-plug Detection, and DisplayPort mode.

**Table 2-1 OSD menu options and descriptions (continued)**

Main menu	Description
Power	Adjusts the power settings, such as auto-sleep mode, power-on recall, and power LED.
Menu	Adjusts the OSD menu and function button controls such as language, menu transparency, menu timeout, OSD messages, and assign buttons.
Management	Returns all OSD menu settings to the factory default settings, or changes DDC and support status.
Information	Provides information about the monitor, such as current mode, optimal mode, color setting, display mode, HDR status, backlight hours, FW package version, HW revision, and serial number.
Exit	Exits the OSD menu screen.

## Selecting color presets

Use the OSD menu to select from a variety of color presets that configure the monitor for a variety of different viewing situations.

To access the color presets:

1. In the OSD menu, select the **Color** menu.
2. Select a color preset. The following table describes the available color presets.



**NOTE:** Each preset has both a standard dynamic range (SDR) and high dynamic range (HDR) configuration.

**Table 2-2 Color presets and descriptions**

Color preset	Description
Gaming	A high brightness preset that takes advantage of the native, wide gamut of the monitor. In HDR, this preset uses the 2084 PQ + clip response, as recommended by the HDR Gaming Interest Group, a consortium of gaming developers and monitor manufacturers.
Standard	Recommended for general computing use, this preset has an sRGB gamut in SDR and a P3 gamut in HDR. Both modes have a D65 white point.
Warm	This color preset provides a warmer D50 white point for the SDR mode. This white point is close to that used by 35 mm projectors and might be preferred for watching black-and-white films because it more closely matches their original appearance.
Cool	Identical to the Standard color preset, but provides a cooler, more blue look than the standard white point. This preset uses a D93 white point.
Native	This is the native color temperature and gamut of the LCD panel (no color processing or tuning is performed).
Night	This is a low blue light preset that reduces the amount of blue spectral energy emitted by the monitor. This color preset has a very warm color temperature (2856K).
HP Enhance+	The HP Enhance+ color submenu or preset adds an additional level of detail (sharpness and contrast) to static images and motion video to enhance their appearance. The three user-selectable options are Low, Medium, and High. The default is Medium.

## Using RGB Gain Adjust

You can use RGB Gain Adjust to adjust the color temperature of any color preset. RGB gain adjustments are stored separately for each color preset.

## Using Auto-Sleep Mode (select products only)

Your monitor has an energy-saving feature called Auto-Sleep Mode, a reduced power state. This section describes how to activate or adjust Auto-Sleep Mode on your monitor.

When Auto-Sleep Mode is enabled (enabled by default), the monitor enters a reduced power state when the computer signals low power mode (absence of either horizontal or vertical sync signal).

Upon entering this reduced power state (Auto-Sleep mode), the monitor screen is blanked, the backlight turns off, and the power light turns amber. The monitor draws less than 0.5 W of power when in this reduced power state. The monitor wakes from Auto-Sleep mode when the computer sends an active signal to the monitor (for example, when you activate the mouse or keyboard).

To disable Auto-Sleep Mode in the OSD:

1. Press the center of the OSD controller to open the OSD.
2. In the OSD, select **Power**.
3. Select **Auto-Sleep Mode**, and then select **Off**.

## Using PiP and PbP (select products only)

The monitor supports both Picture in Picture (PiP), where one source is overlaid on another, and Picture beside Picture (PbP), where one source is positioned adjacent to another horizontally (for landscape orientation). Two QHD @ 60 Hz (Default) images can be displayed in the PiP mode.

To use PiP or PbP:

1. Connect a secondary input source to the monitor.
2. Press the center of the OSD controller on the rear panel to open the OSD.
3. In the OSD, select **Input** and then select **PIP**.

The monitor scans the secondary inputs for a valid signal input and uses that input for the PiP or PbP picture.

4. If you want to change the PiP or PbP input, select **PIP** in the OSD, and then select **Assign Inputs**.

# 3 Support and troubleshooting

If your monitor is not working as expected, you might be able to resolve the issue by following the instructions in this section.

## Solving common issues

The following table lists possible issues, the possible cause of each issue, and the recommended solutions.

**Table 3-1 Common issues and solutions**

Issues	Possible cause	Solution
Screen is blank or video is blinking.	Power cord is disconnected.	Connect the power cord.
	Monitor is off.	Press the monitor power button.  <b>NOTE:</b> If pressing the power button has no effect, press and hold the power button for 10 seconds to disable the Power Button Lockout feature.
	Video cable is improperly connected.	Connect the video cable properly. For more information, see <a href="#">Connecting the cables on page 8</a> .
	System is in sleep mode.	Press any key on the keyboard or move the mouse to inactivate the screen blanking utility.
	Video card is incompatible.	Open the OSD menu and select the <b>Input</b> menu. Set <b>Auto-Switch Inputs</b> to <b>Off</b> and manually select the input.  or  Replace the video card or connect the video cable to one of the computer's on-board video sources.
Image appears blurred, indistinct, or too dark.	Brightness setting is too low.	Open the OSD menu, and select the <b>Image</b> menu. Select <b>Brightness</b> to adjust the brightness scale as needed.
"Check Video Cable" is displayed on the screen.	Monitor video cable is disconnected.	Connect the appropriate video signal cable between the computer and monitor. Be sure that the computer power is off while connecting the video cable.
The monitor does not enter into a low-power sleep state.	The monitor's power saving control is disabled.	Open the OSD menu and select <b>Power</b> , select <b>Auto-Sleep Mode</b> , and then set auto-sleep to <b>On</b> .
"OSD Lockout" is displayed.	The monitor's OSD Lockout function is enabled.	Press and hold the center of the OSD controller for 10 seconds to disable the OSD Lockout function.
"Power Button Lockout" is displayed.	The monitor's Power Button Lockout feature is enabled.	Press and hold the <b>Power</b> button for 10 seconds to unlock the power button function.

## Button lockouts

The button lockout function is available only when the monitor is on, an active signal is displayed, and the OSD menu is closed. Holding down the power button for 10 seconds disables that button. You can re-enable the button by holding it down again for 10 seconds.



---

## 4 Maintaining the monitor

Properly maintained, your monitor can run for many years. These instructions provide steps you can perform to keep your monitor in the best condition.

### Maintenance guidelines

Follow these instructions to enhance the performance and extend the life of the monitor.

- Do not open the monitor cabinet or attempt to service this product yourself. Adjust only those controls that are covered in the operating instructions. If the monitor is not operating properly or has been dropped or damaged, contact an authorized HP dealer, reseller, or service provider.
- Use only a power source and connection appropriate for this monitor, as indicated on the label or back plate of the monitor.
- Be sure that the total ampere rating of the products connected to the outlet does not exceed the current rating of the AC outlet and that the total ampere rating of the products connected to the cord does not exceed the rating of the cord. Look on the power label to determine the ampere rating (AMPS or A) for each device.
- Install the monitor near an outlet that you can easily reach. Disconnect the monitor by grasping the plug firmly and pulling it from the outlet. Never disconnect the monitor by pulling the cord.
- Turn the monitor off when it is not in use, and use a screen saver program. Doing this can substantially increase the life expectancy of the monitor.



**NOTE:** A burned-in image on the monitor is not covered under the HP warranty.

---

- Never block the slots and openings of the cabinet or push objects into them. These openings provide ventilation.
- Do not drop the monitor or place it on an unstable surface.
- Do not allow anything to rest on the power cord. Do not walk on the cord.
- Keep the monitor in a well-ventilated area, away from excessive light, heat, or moisture.

### Cleaning the monitor

Use these instructions to clean your monitor when necessary.

1. Turn off the monitor and unplug the power cord from the AC outlet.
2. Disconnect any external devices.
3. Dust the monitor by wiping the screen and the cabinet with a soft, clean antistatic cloth.

4. For more difficult cleaning situations, use a 50/50 mix of water and isopropyl alcohol.



**IMPORTANT:** Do not use cleaners that contain petroleum-based materials such as benzene, thinner, or any volatile substance to clean the monitor screen or cabinet. These chemicals might damage the monitor.



**IMPORTANT:** Spray the cleaner onto a cloth and use the damp cloth to gently wipe the screen surface. Never spray the cleaner directly on the screen surface. It can run behind the bezel and damage the electronics. The cloth should be moist, but not wet. Water dripping into the ventilation openings or other points of entry can cause damage to the monitor. Allow the monitor to air-dry before use.

---

5. After you remove the dirt and debris, you can also clean the surfaces with a disinfectant. The World Health Organization (WHO) recommends cleaning surfaces, followed by disinfection, as a best practice for preventing the spread of viral respiratory illnesses and harmful bacteria. A disinfectant that is within HP's cleaning guidelines is an alcohol solution consisting of 70% isopropyl alcohol and 30% water. This solution is also known as rubbing alcohol and is sold in most stores.


## Shipping the monitor

Keep the original packing box in a storage area. You might need it later if you ship the monitor or move.

# A Technical specifications

This section contains technical specifications for the physical aspects of your monitor, such as the weight and viewing dimensions, as well as required environmental operating conditions and power source ranges.

All specifications represent the typical specifications provided by HP component manufacturers; actual performance can vary either higher or lower.

 **NOTE:** For the latest specifications or additional specifications for this product, go to <http://www.hp.com/go/quickspecs/> and search for your specific monitor model to find the model-specific QuickSpecs.

## 68.5 cm (27 in) model specifications

This section provides specifications for your monitor.

**Table A-1** Technical specifications

Specification	Measurement	
<b>Display, wide-screen</b>	<b>68.5 cm</b>	27 in
Type	VA	
<b>Viewable image size</b>	<b>68.5 cm diagonal</b>	27 in diagonal
<b>Maximum weight (unpacked)</b>	<b>7.01 kg</b>	15.45 lb
<b>Dimensions (include base)</b>		
Height	<b>52.23 cm</b>	20.56 in
Depth	<b>26.00 cm</b>	10.24 in
Width	<b>60.71 cm</b>	23.90 in
<b>Tilt</b>	<b>-5° to 20°</b>	
<b>Environmental requirements temperature</b>		
Operating temperature	<b>5°C to 35°C</b>	41°F to 95°F
Storage temperature	<b>-40°C to 65°C</b>	-40°F to 149°F
Storage humidity	5% to 95% (noncondensing)	
<b>Power source</b>	100 V ac to 240 V ac 50/60 Hz	
<b>Video input terminal</b>	One HDMI port and one DisplayPort connector	

## Preset display resolutions

The following display resolutions are the most commonly used modes and are set as factory defaults. The monitor automatically recognizes these preset modes, and they will appear properly sized and centered on the screen.

## 68.5 cm (27 in) model

This section provides preset display resolutions and preset timing resolutions.

**Table A-2** Preset display resolutions

Preset	Pixel format	Horz freq (kHz)	Vert freq (Hz)
1	640 × 480	31.469	59.940
2	640 × 480	37.500	75.000
3	720 × 400	31.469	70.087
4	720 × 480	31.469	59.940
5	800 × 600	37.879	60.317
6	800 × 600	46.875	75.000
7	1024 × 768	48.363	60.004
8	1024 × 768	60.023	75.029
9	1280 × 720	45.000	60.000
10	1280 × 800	49.702	59.810
11	1280 × 1024	79.976	75.025
12	1440 × 900	55.935	59.887
13	1600 × 900	60.000	60.000
14	1600 × 1200	75.000	60.000
15	1680 × 1050	65.290	59.954
16	1920 × 1080	67.500	60.000
17	1920 × 1080	112.500	100.000
18	1920 × 1080	135.000	120.000
19	1920 × 1080	192.788	164.917
20	1920 × 1200	74.556	59.885
21	1920 × 1080	278.400	239.761
22	2560 × 1440	88.787	59.951
23	2560 × 1440	150.919	99.946
24	2560 × 1440	182.996	119.998
25	2560 × 1440	104.056	69.999
26	2560 × 1440	221.970	143.856
27	2560 × 1440	222.202	144.006
28	2560 × 1440	257.169	164.958
29	2560 × 1440	361.441	240.001

# Enhanced-definition and high-definition video formats

This section provides enhanced-definition and high-definition video formats.

**Table A-3 High-definition video formats**

Preset	Timing name	Pixel format	Horz freq (kHz)	Vert freq (Hz)
1	480p	640 × 480	31.469	59.940
2	480p	720 × 480	31.469	59.940
3	720p60	1280 × 720	45.000	60.000
4	1080p60	1920 × 1080	67.500	60.000
5	1080p100	1920 × 1080	112.500	100.000
6	1080p120	1920 × 1080	135.000	120.000

# Power supply specification

This section provides power supply specifications.

**Table A-4 Power supply specification**

Manufacturer	Model number	Power supply rating
Delta	TPN-DA19	120 W
Lite-On	TPN-LA18	120 W

---

## B Accessibility

HP's goal is to design, produce, and market products, services, and information that everyone everywhere can use, either on a stand-alone basis or with appropriate third-party assistive technology (AT) devices or applications.

### HP and accessibility

Because HP works to weave diversity, inclusion, and work/life into the fabric of the company, it is reflected in everything HP does. HP strives to create an inclusive environment focused on connecting people to the power of technology throughout the world.

### Finding the technology tools you need

Technology can unleash your human potential. Assistive technology removes barriers and helps you create independence at home, at work, and in the community. Assistive technology helps increase, maintain, and improve the functional capabilities of electronic and information technology.

For more information, see [Finding the best assistive technology on page 25](#).

### The HP commitment

HP is committed to providing products and services that are accessible for people with disabilities. This commitment supports the company's diversity objectives and helps ensure that the benefits of technology are available to all.

The HP accessibility goal is to design, produce, and market products and services that can be effectively used by everyone, including people with disabilities, either on a stand-alone basis or with appropriate assistive devices.

To achieve that goal, this Accessibility Policy establishes seven key objectives to guide HP actions. All HP managers and employees are expected to support these objectives and their implementation in accordance with their roles and responsibilities:

- Raise the level of awareness of accessibility issues within HP, and provide employees with the training they need to design, produce, market, and deliver accessible products and services.
- Develop accessibility guidelines for products and services, and hold product development groups accountable for implementing these guidelines where competitively, technically, and economically feasible.
- Involve people with disabilities in the development of accessibility guidelines and in the design and testing of products and services.
- Document accessibility features, and make information about HP products and services publicly available in an accessible form.
- Establish relationships with leading assistive technology and solution providers.
- Support internal and external research and development that improves assistive technology relevant to HP products and services.

- Support and contribute to industry standards and guidelines for accessibility.

## International Association of Accessibility Professionals (IAAP)

IAAP is a not-for-profit association focused on advancing the accessibility profession through networking, education, and certification. The objective is to help accessibility professionals develop and advance their careers and to better enable organizations to integrate accessibility into their products and infrastructure.

As a founding member, HP joined to participate with other organizations to advance the field of accessibility. This commitment supports HP's accessibility goal of designing, producing, and marketing products and services that people with disabilities can effectively use.

IAAP will make the profession strong by globally connecting individuals, students, and organizations to learn from one another. If you are interested in learning more, go to <http://www.accessibilityassociation.org> to join the online community, sign up for newsletters, and learn about membership options.

## Finding the best assistive technology

Everyone, including people with disabilities or age-related limitations, should be able to communicate, express themselves, and connect with the world using technology. HP is committed to increasing accessibility awareness within HP and with our customers and partners.

Whether it's large fonts that are easy on the eyes, voice recognition that lets you give your hands a rest, or any other assistive technology to help with your specific situation—a variety of assistive technologies make HP products easier to use. How do you choose?

## Assessing your needs

Technology can unleash your potential. Assistive technology removes barriers and helps you create independence at home, at work, and in the community. Assistive technology (AT) helps increase, maintain, and improve the functional capabilities of electronic and information technology.

You can choose from many AT products. Your AT assessment should allow you to evaluate several products, answer your questions, and facilitate your selection of the best solution for your situation. You will find that professionals qualified to do AT assessments come from many fields, including those licensed or certified in physical therapy, occupational therapy, speech/language pathology, and other areas of expertise. Others, while not certified or licensed, can also provide evaluation information. You will want to ask about the individual's experience, expertise, and fees to determine if they are appropriate for your needs.

## Accessibility for HP products

These links provide information about accessibility features and assistive technology, if applicable and available in your country or region, that are included in various HP products. These resources will help you select the specific assistive technology features and products most appropriate for your situation.

- **HP Aging & Accessibility:** Go to <http://www.hp.com>, type `Accessibility` in the search box. Select **Office of Aging and Accessibility**.
- **HP computers:** For Windows 7, Windows 8, and Windows 10, go to <http://www.hp.com/support>, type `Windows Accessibility Options` in the **Search our knowledge** search box. Select the appropriate operating system in the results.
- **HP Shopping, peripherals for HP products:** Go to <http://store.hp.com>, select **Shop**, and then select **Monitors or Accessories**.

If you need additional support with the accessibility features on your HP product, see [Contacting support on page 28](#).

Additional links to external partners and suppliers that may provide additional assistance:

- [Microsoft Accessibility information \(Windows 7, Windows 8, Windows 10, Microsoft Office\)](#)
- [Google Products accessibility information \(Android, Chrome, Google Apps\)](#)

## Standards and legislation

Countries worldwide are enacting regulations to improve access to products and services for persons with disabilities. These regulations are historically applicable to telecommunications products and services, PCs and printers with certain communications and video playback features, their associated user documentation, and their customer support.

### Standards

The US Access Board created Section 508 of the Federal Acquisition Regulation (FAR) standards to address access to information and communication technology (ICT) for people with physical, sensory, or cognitive disabilities.

The standards contain technical criteria specific to various types of technologies, as well as performance-based requirements which focus on functional capabilities of covered products. Specific criteria cover software applications and operating systems, web-based information and applications, computers, telecommunications products, video and multimedia, and self-contained closed products.

### Mandate 376 – EN 301 549

The European Union created the EN 301 549 standard within Mandate 376 as an online toolkit for public procurement of ICT products. The standard specifies the accessibility requirements applicable to ICT products and services, with a description of the test procedures and evaluation methodology for each requirement.

### Web Content Accessibility Guidelines (WCAG)

Web Content Accessibility Guidelines (WCAG) from the W3C's Web Accessibility Initiative (WAI) helps web designers and developers create sites that better meet the needs of people with disabilities or age-related limitations.

WCAG advances accessibility across the full range of web content (text, images, audio, and video) and web applications. WCAG can be precisely tested, is easy to understand and use, and allows web developers flexibility for innovation. WCAG 2.0 has also been approved as [ISO/IEC 40500:2012](#).

WCAG specifically addresses barriers to accessing the web experienced by people with visual, auditory, physical, cognitive, and neurological disabilities, and by older web users with accessibility needs. WCAG 2.0 provides characteristics of accessible content:

- **Perceivable** (for instance, by addressing text alternatives for images, captions for audio, adaptability of presentation, and color contrast)
- **Operable** (by addressing keyboard access, color contrast, timing of input, seizure avoidance, and navigability)
- **Understandable** (by addressing readability, predictability, and input assistance)
- **Robust** (for instance, by addressing compatibility with assistive technologies)



## Legislation and regulations


Accessibility of IT and information has become an area of increasing legislative importance. These links provide information about key legislation, regulations, and standards.

- [United States](#)
- [Canada](#)
- [Europe](#)
- [Australia](#)

## Useful accessibility resources and links

These organizations, institutions, and resources might be good sources of information about disabilities and age-related limitations.

---

 **NOTE:** This is not an exhaustive list. These organizations are provided for informational purposes only. HP assumes no responsibility for information or contacts you encounter on the internet. Listing on this page does not imply endorsement by HP.

---

## Organizations

These organizations are a few of the many that provide information about disabilities and age-related limitations.

- American Association of People with Disabilities (AAPD)
- The Association of Assistive Technology Act Programs (ATAP)
- Hearing Loss Association of America (HLAA)
- Information Technology Technical Assistance and Training Center (ITTATC)
- Lighthouse International
- National Association of the Deaf
- National Federation of the Blind
- Rehabilitation Engineering & Assistive Technology Society of North America (RESNA)
- Telecommunications for the Deaf and Hard of Hearing, Inc. (TDI)
- W3C Web Accessibility Initiative (WAI)

## Educational institutions

Many educational institutions, including these examples, provide information about disabilities and age-related limitations.

- California State University, Northridge, Center on Disabilities (CSUN)
- University of Wisconsin - Madison, Trace Center
- University of Minnesota computer accommodations program

## Other disability resources

Many resources, including these examples, provide information about disabilities and age-related limitations.

- ADA (Americans with Disabilities Act) Technical Assistance Program
- ILO Global Business and Disability network
- EnableMart
- European Disability Forum
- Job Accommodation Network
- Microsoft Enable

## HP links

These HP-specific links provide information that relates to disabilities and age-related limitations.

[HP comfort and safety guide](#)

[HP public sector sales](#)

## Contacting support

HP offers technical support and assistance with accessibility options for customers with disabilities.



---

**NOTE:** Support is in English only.

---

- Customers who are deaf or hard of hearing who have questions about technical support or accessibility of HP products:
  - Use TRS/VRS/WebCapTel to call (877) 656-7058 Monday through Friday, 6 a.m. to 9 p.m. Mountain Time.
- Customers with other disabilities or age-related limitations who have questions about technical support or accessibility of HP products, choose one of the following options:
  - Call (888) 259-5707 Monday through Friday, 6 a.m. to 9 p.m. Mountain Time.
  - Complete the [Contact form for people with disabilities or age-related limitations](#).

---

# Index

## A

accessibility 24, 25, 27, 28  
accessibility needs assessment 25  
assistive technology (AT)  
    finding 25  
    purpose 24  
AT (assistive technology)  
    finding 25  
    purpose 24  
audio-out (headphone) jack 3  
auto-adjustment (analog input) 17

## B

buttons  
    power 3

## C

calling technical support 2  
color presets 15  
components  
    rear 3  
connectors  
    DisplayPort 3  
    power 3  
customer support, accessibility 28

## D

DisplayPort connector 3

## G

getting started 1  
getting to know your monitor 2

## H

HDMI port 3  
HP Assistive Policy 24  
HP resources 2  
HP support 2

## I

International Association of  
    Accessibility Professionals 25

## J

jacks  
    audio-out (headphone) 3

## L

label 4

## O

optimizing image performance  
    (analog input) 17  
OSD controller 3

## P

ports  
    HDMI 3  
power button 3  
power connector 3  
product label 4  
product number 4

## R

rear components 3  
resources, accessibility 27  
RGB Gain Adjust 16  
routing cables 6

## S

safety information 1  
Section 508 accessibility  
    standards 26  
serial number 4  
standards and legislation,  
    accessibility 26  
support 2

## T

technical support 2

## W

warnings 1