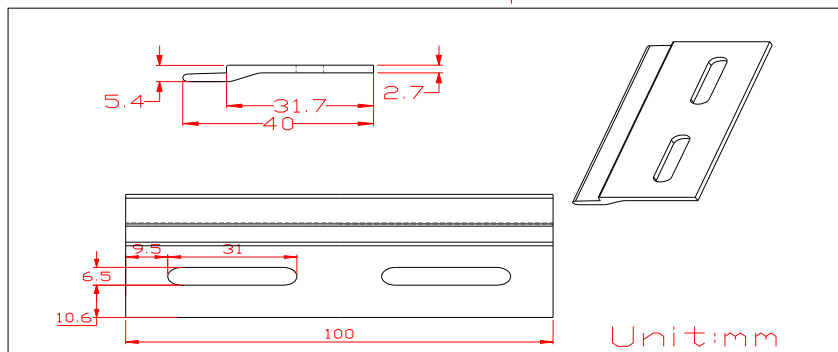
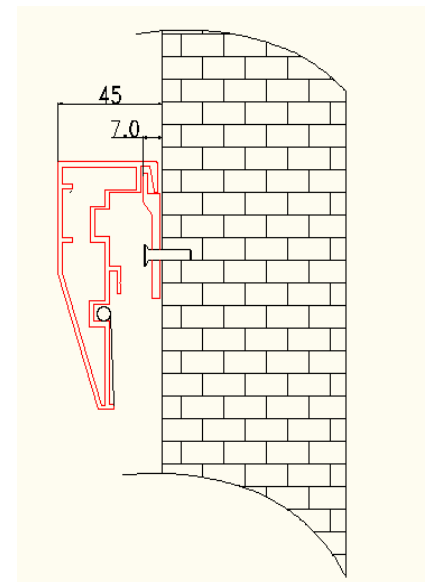
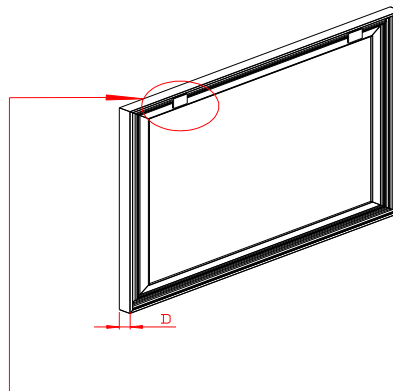
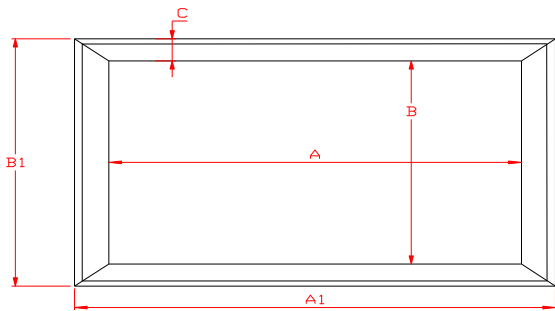


Sable Frame Series Dimensions Table

Unit: mm							
Model Number	Nominal Diagonal & Aspect Ratio	Overall Width (A1)	Viewing Width (A)	Overall Height (B1)	Viewing Height (B)	Frame Width (C)	Frame Depth (D)
ER92WH1	92" (16:9)	2157	2037	1265	1145	60	40
ER100-WH1, -A1080P2, -A1080P3, GH1, DHD3	100" (16:9)	2334	2214	1365	1245	60	40
ER106WH1	106" (16:9)	2467	2347	1440	1320	60	40
ER110WH1	110" (16:9)	2555	2435	1490	1370	60	40
ER110DHD3	110" (16:9)	2555	2435	1490	1370	60	40
ER120-WH1, -A1080P2, -A1080P3, GH1, DHD3	120" (16:9)	2777	2657	1614	1494	60	40
ER135WH1	135" (16:9)	3110	2990	1800	1680	60	40
ER135DHD3	135" (16:9)	3110	2990	1800	1680	60	40
ER150WH1	150" (16:9)	3440	3320	1990	1870	60	40
ER150DHD3	150" (16:9)	3440	3320	1990	1870	60	40
ER180WH1	180" (16:9)	4105	3985	2360	2240	60	40
ER180GH1	180" (16:9)	4105	3985	2360	2240	60	40
ER200WH1	200" (16:9)	4550	4430	2610	2490	60	40
ER109WX1	109" (16:10)	2456	2336	1579	1460	60	40
ER114WX1	114" (16:10)	2557	2438	1643	1524	60	40
ER85WH1-Wide	85"(2.35:1)	2106	1986	965	845	60	40
ER85H1-Wide	85"(2.35:1)	2106	1986	965	845	60	40
ER85WH1-A1080P2	85"(2.35:1)	2106	1986	965	845	60	40
ER96WH1-Wide	96"(2.35:1)	2364	2244	1075	955	60	40
ER96H1-Wide	96"(2.35:1)	2364	2244	1075	955	60	40
ER96WH1-A1080P2	96"(2.35:1)	2364	2244	1075	955	60	40
ER96WH1W-A1080P3	96"(2.35:1)	2364	2244	1075	955	60	40
ER103WH1-Wide	103"(2.35:1)	2527	2407	1144	1024	60	40
ER103H1-Wide	103"(2.35:1)	2527	2407	1144	1024	60	40
ER103WH1-A1080P2	103"(2.35:1)	2527	2407	1144	1024	60	40
ER115WH1-Wide	115"(2.35:1)	2808	2688	1264	1144	60	40
ER115WH1-A1080P2	115"(2.35:1)	2808	2688	1264	1144	60	40
ER115WH1W-A1080P3	115"(2.35:1)	2808	2688	1264	1144	60	40
ER125WH1-Wide	125"(2.35:1)	3041	2921	1363	1243	60	40
ER125WH1-A1080P2	125"(2.35:1)	3041	2921	1363	1243	60	40
ER125WH1W-A1080P3	125"(2.35:1)	3041	2921	1363	1243	60	40
ER138H1-Wide	138"(2.35:1)	3345	3225	1492	1372	60	40
ER138WH1-Wide	138"(2.35:1)	3345	3225	1492	1372	60	40
ER138WH1-A1080P2	138"(2.35:1)	3345	3225	1492	1372	60	40
ER138WH1W-A1080P3	138"(2.35:1)	3345	3225	1492	1372	60	40
ER158WH1-Wide	158"(2.35:1)	3813	3693	1691	1571	60	40
ER158WH1-A1080P2	158"(2.35:1)	3813	3693	1691	1571	60	40
ER166WH1-Wide	166"(2.35:1)	4000	3880	1771	1651	60	40
ER166WH1-A1080P2	166"(2.35:1)	4000	3880	1771	1651	60	40
ER176WH1-Wide	176"(2.35:1)	4233	4113	1870	1750	60	40
ER176WH1-A1080P2	176"(2.35:1)	4233	4113	1870	1750	60	40

The listed measurements are for general reference only. Please contact Elite Screens to verify product design and dimensions before attempting to integrate its products with any structural or furniture modification. Although a manufacturer may offer product advice, it may be taken or disregarded at the integrator's discretion. Elite Screens will not be held responsible or be otherwise liable for faulty installations.

Note: Data Error ±1", *Denotes a Discontinued Item, stock may be limited or unavailable.





ezFrame & Sable Frame Series

Fixed Frame Projection Screen

User's Guide

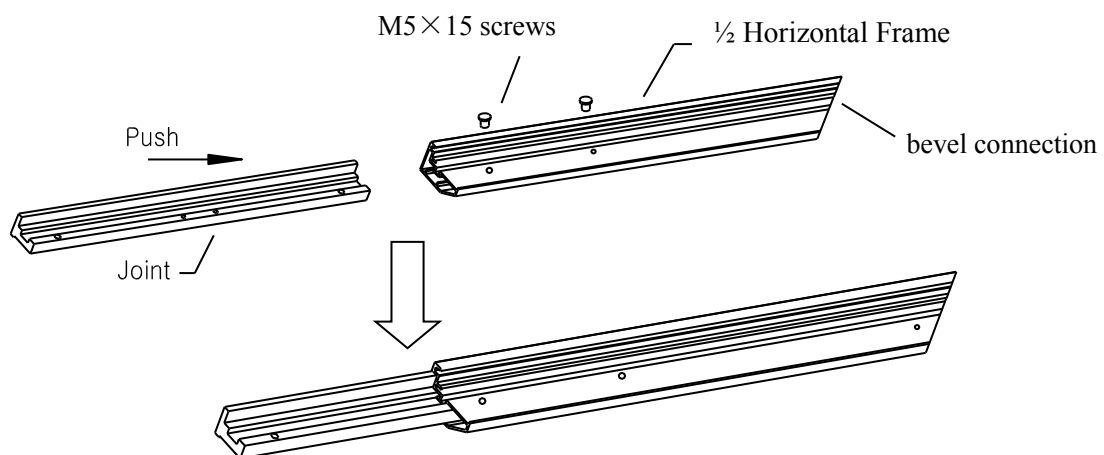
Hardware and Parts List

1. Frame Parts x 6 pcs (4 top/bottom horizontal frame pcs + 2 side vertical frame pcs)
2. Tension Rods x 6 pcs (4 top/bottom rods + 2 side rods)
3. Screen Material x 1 pc
4. Center joints x 2 pcs
5. Elbow Joints x 4 pcs
6. Wall brackets x 2 – 3 pcs (depending on model/size)
7. M5x50 wood screws x 6 pcs
8. Hollow wall anchor x 6 pcs
9. M5x15 screws x 16 pcs
10. Center Support Bar x 1 – 2 pcs (depending on model/size)
11. Fix Plates x 60 – 180 pcs (depending on model/size)

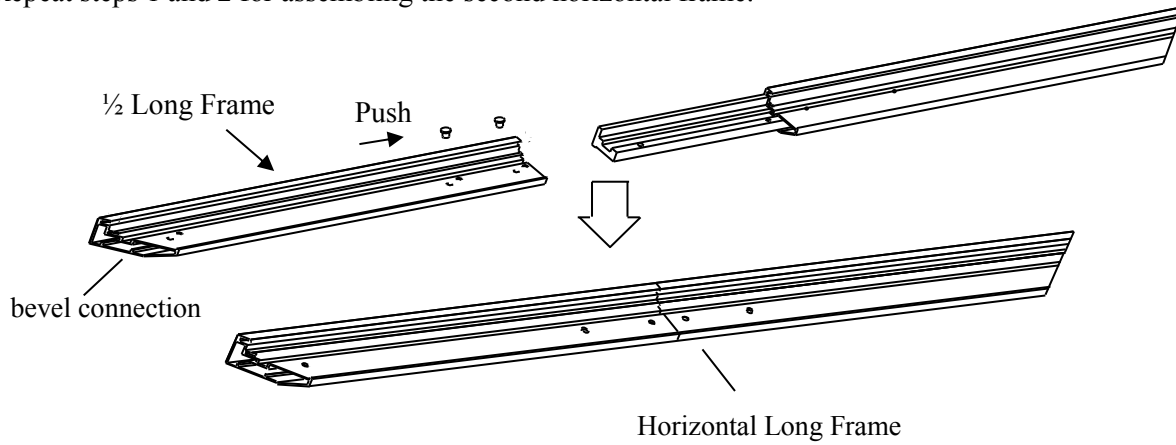
Note: Please make sure all parts are included in your package before proceeding to assemble your Elite Screens fixed frame projection screen.

FRAME ASSEMBLY

1. Insert the **center joint** connector into to one of the 1/2 horizontal frames and fasten it with two **M5x15 screws**.



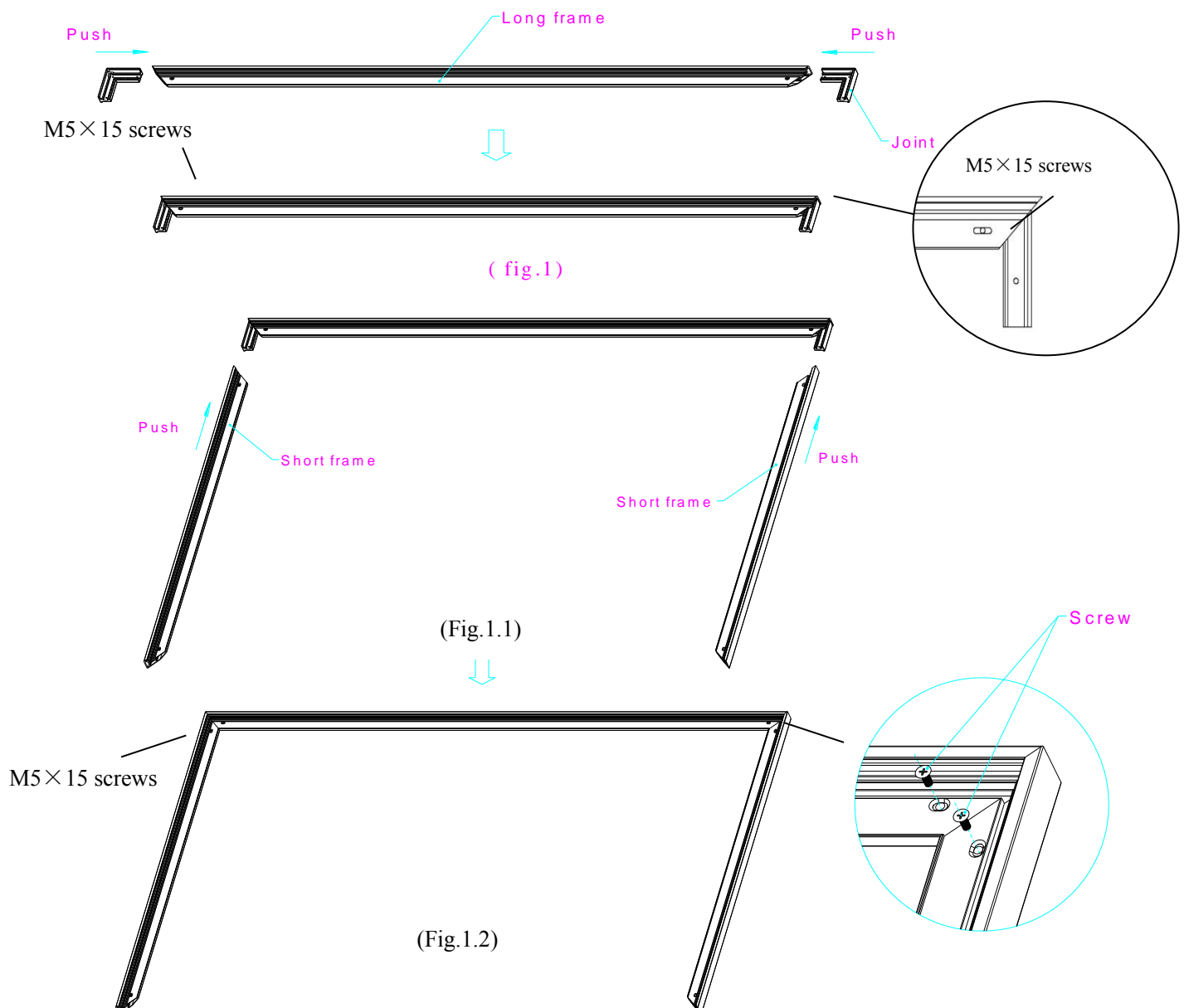
2. Insert the other 1/2 horizontal frame piece to the **center joint** connector and fasten it with two **M5x15 screws**. Repeat steps 1 and 2 for assembling the second horizontal frame.



Note: a. 2 long frames should be assembled for a screen.

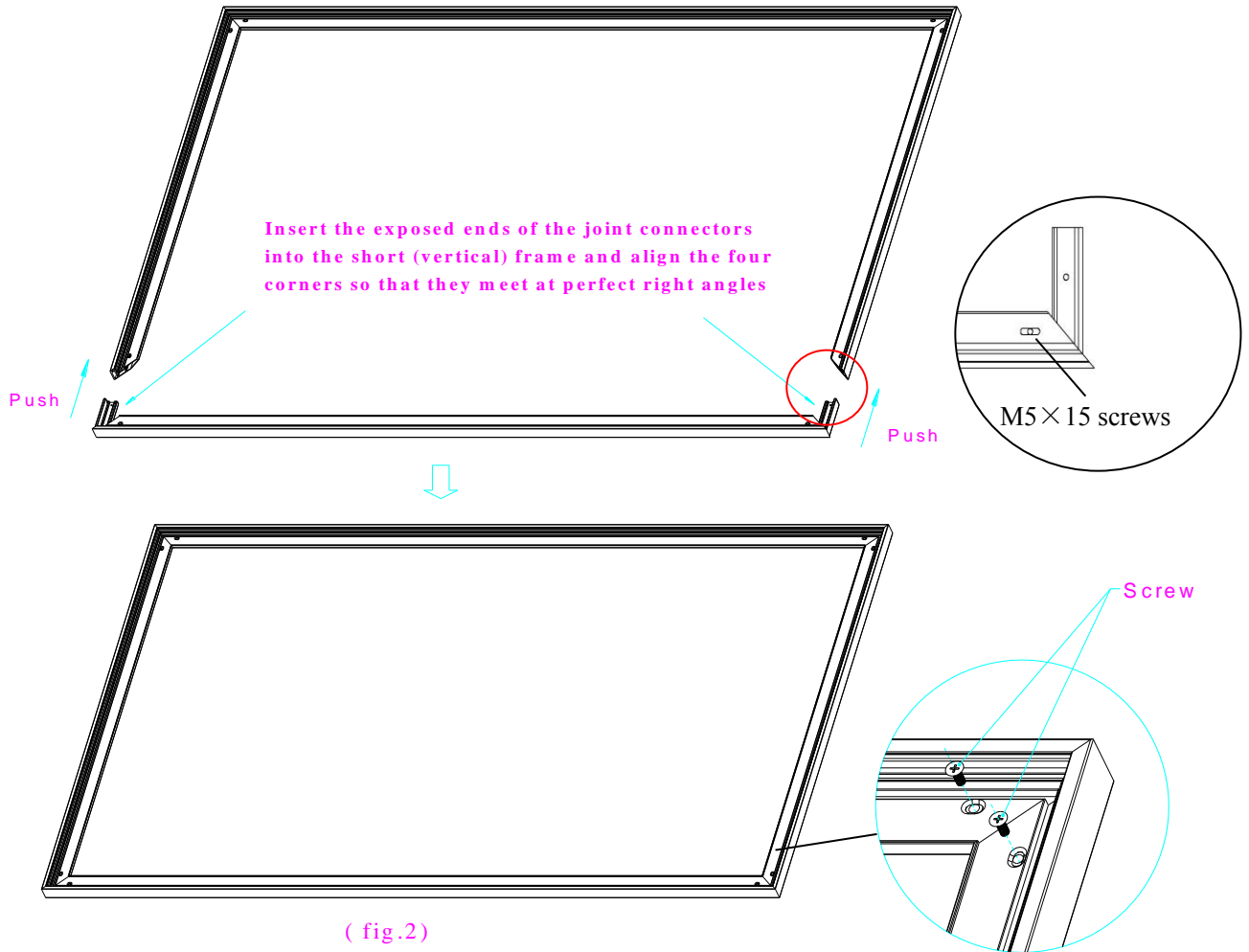
b. Do not tighten the screws completely until all frame pieces have been assembled correctly.

3. Insert both **elbow joint** connectors into the long horizontal frame and then fasten it with two **M5x15 screws** (see Fig.1). Then insert the vertical short frames and fasten them with screws (fig.1.2)



4. Join all four frame parts together following the steps shown below. (Fig.2)

Note: When assembled, please push simultaneously the two ends of the long frames.

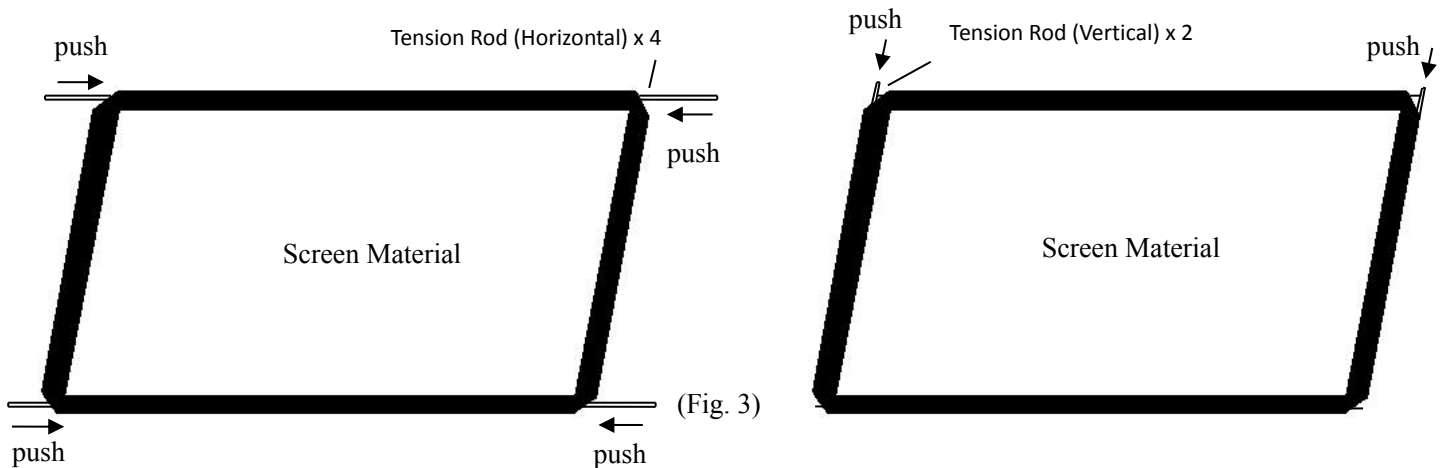


(fig.2)

Attaching the screen material to the frame

1. Unroll the screen material and lay it down on a clean surface. Then insert the tension rods separately into the edges of all four corners of the material (see fig.3)

- Tension Rod (Vertical) x 2
- Tension Rod (Horizontal) x 4



2. Make sure that the material and frame are both lying face down on a clean, dry, and non-abrasive surface.

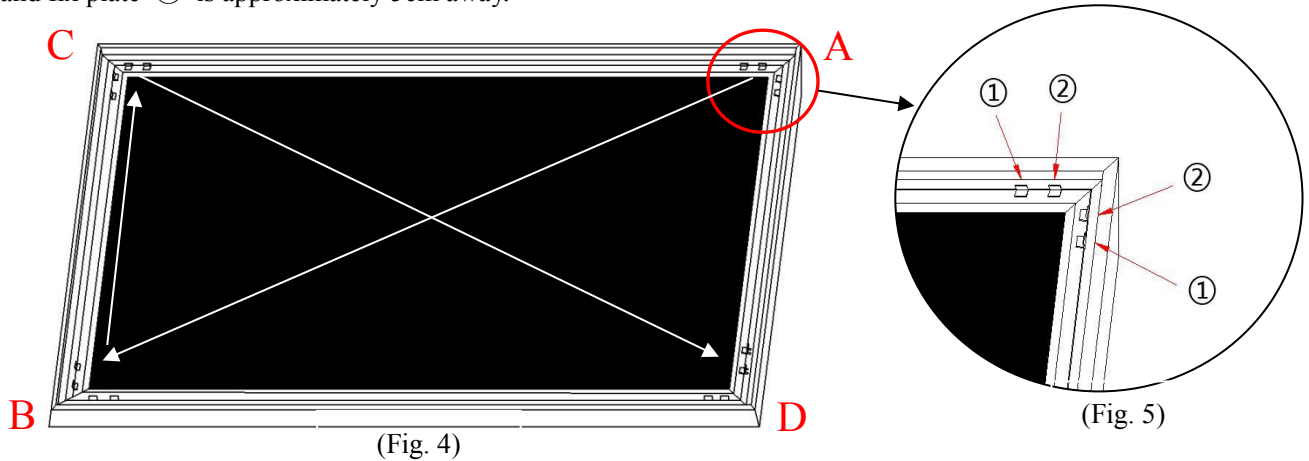
3. Center the material inside the frame.

Please note the material will be noticeably smaller than the frame, as the material must be stretched to create a sufficient amount of tension for perfect material flatness.

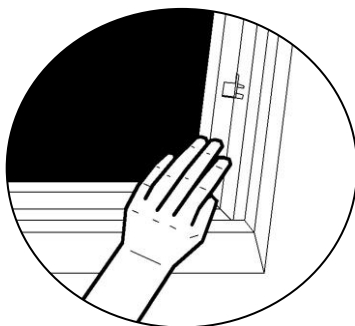
4. Attach the fix plates

(1) Begin by securing the four corners in the following order **A**→**B**→**C**→**D** (Fig.4)

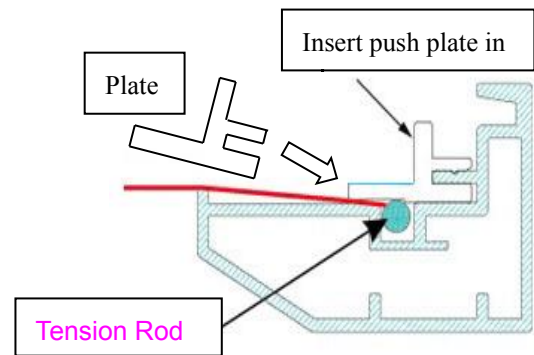
(2) Insert the fix plates as shown on Fig. 5. Fix plate ① is approximately 10 cm away from the frame's corner and fix plate ② is approximately 5cm away.



(3) Stretch the material to the corner and insert the screen material's edge into the groove of the frame. While one hand holds the material in place, the other hand snaps in the push plate (Fig.6-Fig.7).



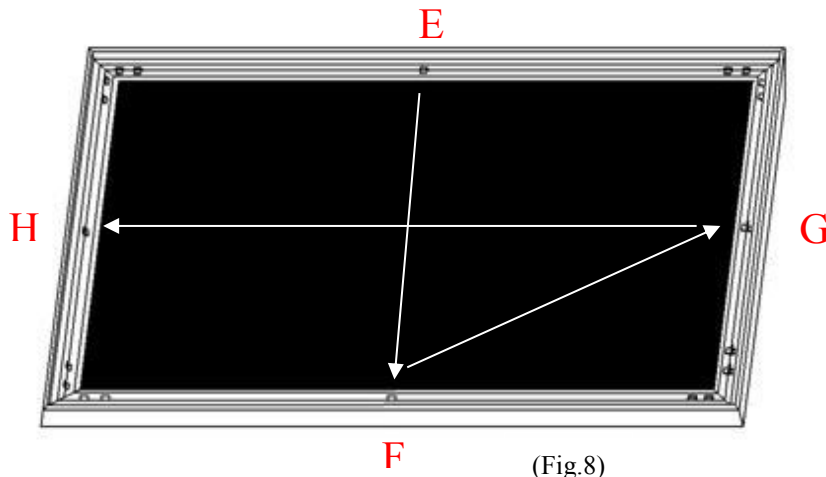
(Fig. 6)



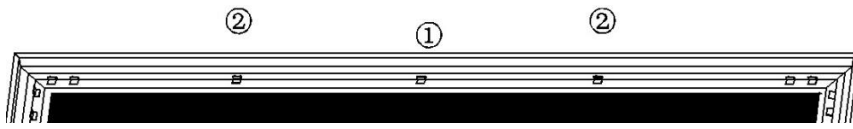
(Fig. 7)

Schematic Cross section of the Frame

(4) Place a fix plate in the center of each side in the following order **E**→**F**→**G**→**H**. (Fig.8)

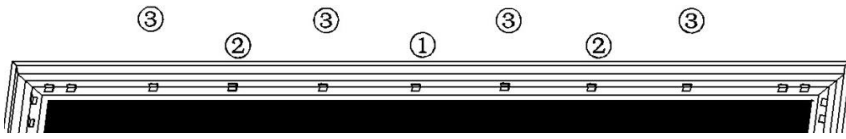


(Fig.8)



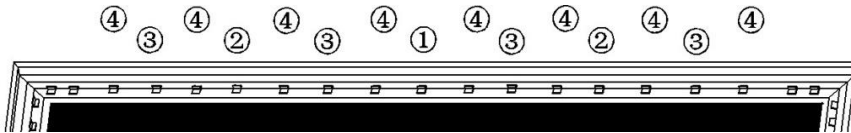
(Fig.9)

(5) Put the next set of fix plates ② in the middle between fix plate ① and the corner. (Fig.9)



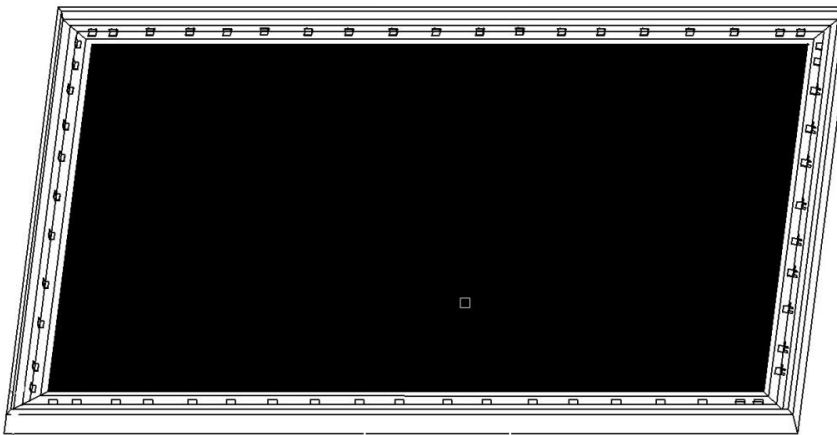
(Fig.10)

(6) Then put the next set of fix plates ③ between ① and ② and the corner. (Fig.10)



(Fig.11)

(7) Lastly, put the next set of fix plates (4) as shown in Fig.11



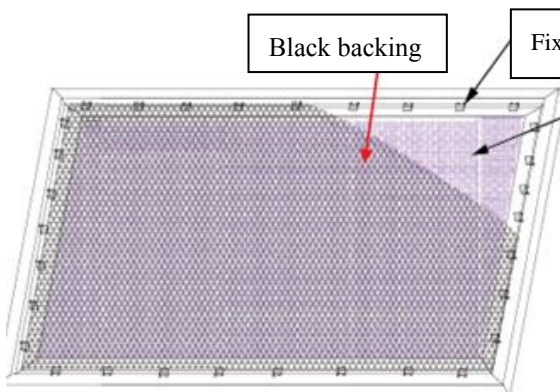
(Fig.12)

(8) Repeat steps 5-7 to for the rest of the sides to complete attaching the screen material (Fig.12)

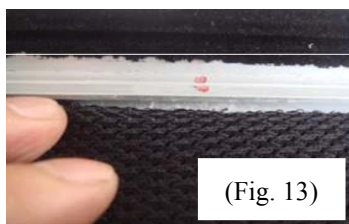
Black backing for AcousticPro models

This procedure only applies to AcousticPro models. Disregard this section if your Fixed Frame does not include an acoustically transparent screen material. The purpose of the black backing material is to block out any light penetration that may reflect off of anything mounted behind the screen, which can cause distortion to the projected image.

The black backing is held in place by the Velcro that is on the fix plates.



Interval markings reveal the best points for inserting the fix plates (Fig. 13). The prongs on the fix plates insert to the lip on the back of the frame creating a friction hold that will firmly keep the material and black backing in place (Fig. 14-15). After the material has been installed, the backing will lie over the back of the white (Acoustic) material and then be held in place by the Velcro on the fix plates (Fig 16).



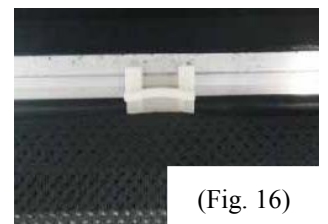
(Fig. 13)



(Fig. 14)



(Fig. 15)

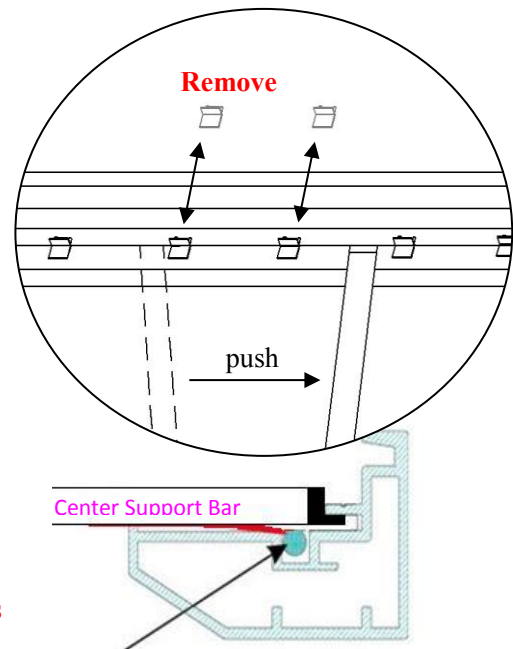
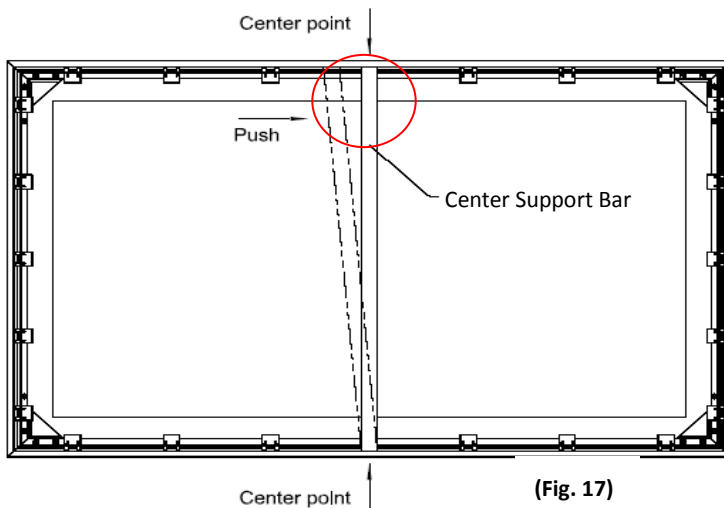


(Fig. 16)

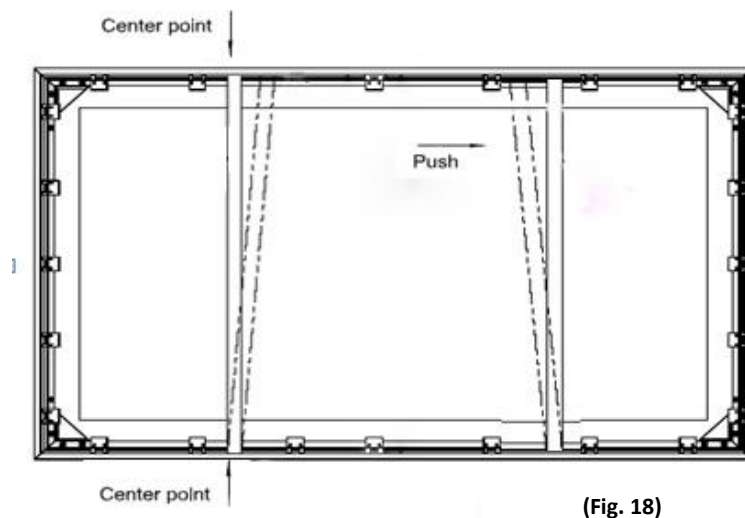
Center Support Bar

1. Insert the **Center Support Bar** into the upper top groove on the back of the frame (**not the one where the fix plate inserts**) with the bottom end near the approximate center point of the frame and rotate it in at an angle so that both ends of the bar are in alignment with the groove (see Fig. 17 and Fig. 18 below for details).

Diagonal models 135" and below use 1x Center Support Bar



Diagonal models above 135" require 2 x Center Support Bars



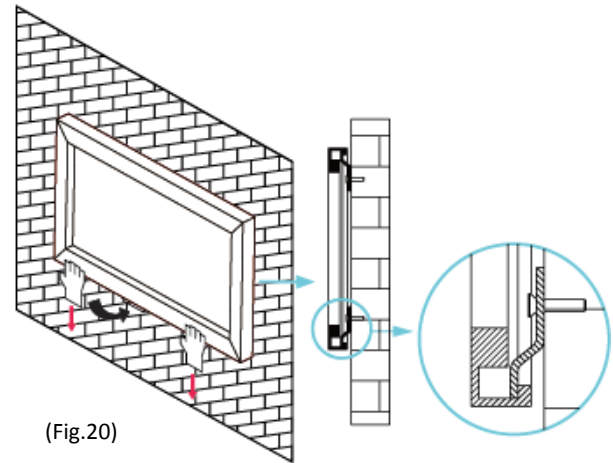
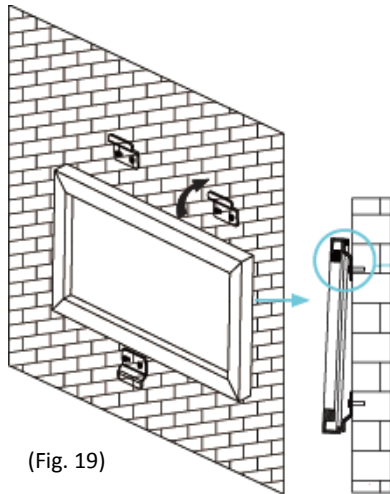
2. Slide the top end of the bar into the top center point of the frame to complete the center support bar installation. **This will provide added stability to your frame and added tension to the material.**

Installation

1. Locate your desired installation location with a stud finder (recommended) and mark the drill-hole area of where the screen is to be installed.
2. Drill a hole with the proper bit size according to the wood screws included.
3. Line up the wall brackets with the drilled holes on the installation location and screw them in using a Phillips screwdriver.

Note: Use 2 top wall brackets on diagonal sizes below 135”, and use 3 top wall brackets on diagonal sizes 135” and above.

4. Position the fixed frame screen onto the top wall brackets as shown in (Fig. 19) and push down at the center of the bottom frame to secure the installation.
5. The design of the wall brackets allows the frame to slide over them through its sides. This is an important feature of the installation design as it allows your screen to be properly centered.
6. Using both hands finish the installation by pushing the lower portion of the fixed frame screen into the lower bracket as shown in Fig 20.



CAUTION

Please follow these instructions carefully to ensure proper maintenance and safety of your Fixed Frame Screen

1. When hanging the screen up, please make sure that no other objects such as power switches, outlets, furniture, ladders, windows, etc. occupy the space designated for your Fixed-Frame screen.
2. Regardless if the screen is hung on or installed into the wall, make sure that the proper mounting anchors are used and that the weight is supported appropriately by a strong and structurally sound surface just as any large and heavy picture frame should. *(Please consult a home improvement specialist for the best advice on installation)*
3. Frame parts are made of high quality velour-surfaced aluminum and should be handled with care.
4. When not in use, cover over the screen with a furniture sheet to protect it from dirt, grime, paint or any other impurities.
5. When cleaning, use a damp soft cloth with warm water to remove any marks on the frame or screen surface.
6. Never attempt to use any solutions, chemicals or abrasive cleaners on the screen surface.
7. In order to avoid damaging the screen, avoid touching it directly with your fingers, tools or any other sharp or abrasive objects.
8. Spare Parts should be placed out of reach of small children in accordance with household safety guidelines.

For a local Elite Screens contact or Technical Support, please visit

www.elitescreens.com



Screen Material Maintenance Care General Cleaning Instructions

Care & Use

Proper care and use will maximize the life of the material and bring you years of enjoyment.

Care for the following materials:

AcousticPro 1080P2, AcousticPro 1080P3, AcousticPro UHD, CineWhite®, CineWhite® A8K, CineWhite® UHD, CineWhite® UHD-B, CineWhite® X, CineWhite ISF, CineGrey, MaxWhite®, MaxWhite® B, MaxWhite® 2, MaxWhite® FG, Spectra White FG, SilkWhite, SilkWhite 2, StarBright 9™, VersaWhite, WraithVeil®, WraithVeil® and WraithVeil® Dual

1. Materials needed: 2 Lint-Free white cloths, Mild Soap (hand soap is suitable) and Water.
2. Take the Lint-Free cloth and submerge it in warm water for cleaning light dust and dirt. For stubborn stains or a sticky surface, a solution of mild dishwashing liquid diluted with warm water should be used.
3. Completely ring out cloth so it is lightly dampened, not drenched.
4. Using the damp cloth, lightly wipe in an up and down motion starting at the left of the screen moving to the right of the screen. **DO NOT WIPE IN CIRCULAR MOTION.**
5. Once you have completed wiping the entire screen with a dampened Lint-Free cloth, use the dry Lint-Free cloth to wipe off any excess water from the screen.

****If heavily soiled (marked permanently): You may use alcohol with a Q-Tip to clean.**

1. Dip one side of the Q-Tip in Alcohol
2. Gently wipe marked spot ONLY.
3. Use dry side of Q-Tip to go over mark to dry it.
4. You may wipe over with dry Lint-Free Cloth to finish.

Care for the following materials:

CineGrey 3D®, CineGrey 3D® AT, CineGrey 4D, CineGrey 5D®, PowerGain and AirBright 3D2

1. Materials needed: 2 Microfiber cloths and water.
2. Gently blot the area using a lightly dampened lint-free microfiber cloth with clear warm water. **DO NOT** rub.
3. Using the damp cloth, lightly wipe in an up and down motion starting at the left of the screen moving to the right of the screen. **DO NOT WIPE IN CIRCULAR MOTION.**
4. To clean a stubborn stain or a sticky surface, spray a solution of equal parts Formula 409 and warm water onto a lint-free microfiber cloth. **DO NOT SPRAY THE SCREEN MATERIAL DIRECTLY.**

NEVER ALLOW ANY SOLVENTS TO DRY ON THE MATERIALS AS THEY WILL CREATE A STAIN THAT IS NON-REMOVABLE.

****If Heavily soiled (marked permanently): Unfortunately you may NOT use any solution to clean the surface as it will damage the screen. If there is a mark, it is permanent.**

- You can **NOT** repair a screen if it is torn.

Ceiling Ambient Light Rejection Screen Fabric Maintenance:

StarBright CLR® and CLR® 3

Dust, dirt and scratches on the projection screen surface will affect the quality and performance of the projection image. Follow the instructions below to properly maintain the screen.

1. The screen surface has a horizontal linear structure. **DO NOT** wipe the screen up and down or in a circular motion.

Wipe gently from left to right only.

2. Clean the dust on the screen surface with a soft brush or microfiber cloth. A rough/coarse towel or cloth may damage the screen's surface.

3. Gently wipe the screen with a lightly moistened white lint free cloth with water or with a neutral detergent (1mL/0.33 oz) mixed with water (1000 mL/33.8 oz).

Notes: The following precautions should always be followed to avoid damaging the material, which is not covered under warranty.

- Don't touch the screen material to avoid leaving fingerprints.
- Use gloves when handling the material.
- Don't scratch the material, as it will leave permanent markings on the screen's surface.
- Don't point to the screen material with a fingertip or other sharp objects to prevent damage to the material.
- Don't use acetone, benzene, alcohol and any other organic solvents to clean the screen material. Using such chemicals will permanently damage the screen.

Ceiling Ambient Light Rejection Screen Fabric Maintenance:

CLR® 2 Material

Dust, dirt and scratches on the projection screen surface will affect the quality and performance of the projection image. Follow the instructions below to properly maintain the screen.

1. The screen surface has a horizontal linear structure. **DO NOT** wipe the screen up and down or in a circular motion.

Wipe gently from left to right only.

2. Clean the dust on the screen surface with a soft brush or microfiber cloth.

3. Gently wipe the screen with a lightly moistened white lint free cloth with mild soap and water to remove any dirt or debris.

Notes: The following precautions should always be followed to avoid damaging the material, which is not covered under warranty.

- Don't point to the screen material with sharp objects to prevent damage to the material.
- Don't use acetone, benzene, alcohol and any other organic solvents to clean the screen material. Using such chemicals will permanently damage the screen.

For a local Elite Screens contact or Technical Support, Please visit

www.elitescreens.com



Elite's **CineWhite®** (Tension Matte White) has broad light dispersion through diffusion uniformity, black & white contrast and true color rendition making it the most versatile in Elite's tensions screen product lines. This tension PVC surface is the best choice for today's high-contrast ratio projectors in commercial or residential presentations. The **CineWhite®** material equals the performance to our MaxWhite® product, but improves the experience with the superior surface flatness. Uniform diffusion surface has black-backing to eliminate light penetration and is easily washable with mild soap and water.

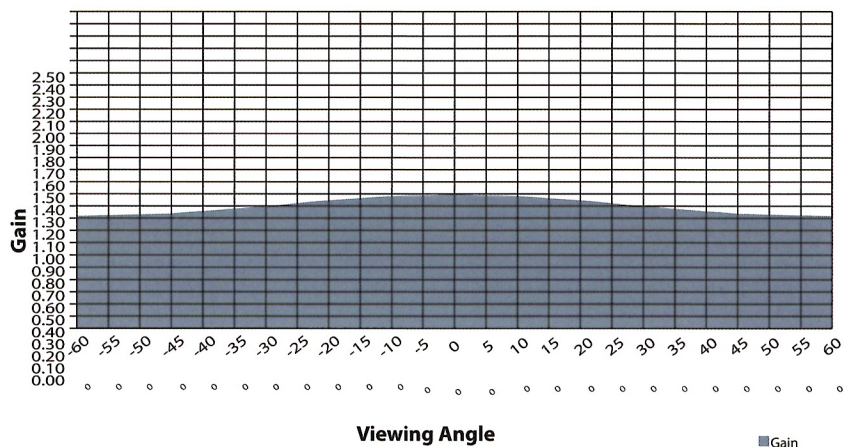
Elite Screen series:
Sable Frame, Lunette, Yard Master 2
ezFrame, Evanesce Tab-Tension B, Aeon



On axis 0° Gain: 1.1
Viewing Cone: 180°

Features

- Multi-layer PVC (Polyvinyl Chloride) with texture and surface coating
- CineWhite® material has a Gain of 1.1
- Active 3D, 4K Ultra HD and HDR ready
- Surface can be cleaned with (water) moist cotton cloth
- Viewing Angle: 180° (90° +/- LR)
- Full Lambertian Diffuser - no half gain drop
- Mildew resistant
- Produces exceptional picture quality for any presentation
- Compatible with Ultra/Short and Standard throw projectors



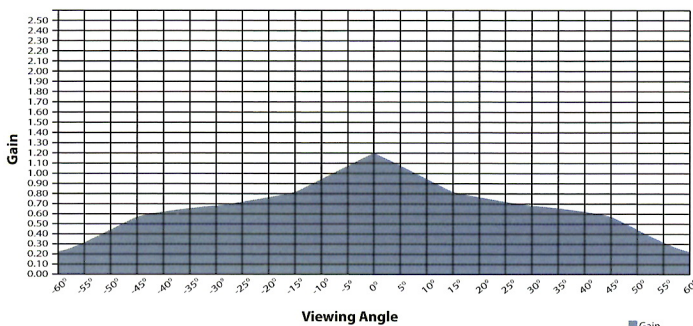


(Shown here on Aeon EDGE FREE® Screen)

The **CineGrey 3D®** is a reference quality front projection screen material formulated for environments with minimal control over room lighting. It was designed to enhance picture brightness, offer accurate color fidelity, and improve contrast levels. The **CineGrey 3D®** is best for family rooms, educational facilities, conference rooms or any applications in which incident light is a factor. Typical matte white surfaces wash out the images when ambient light cannot be controlled. The **CineGrey 3D®** is the best choice for having a projected image with a balanced color temperature and contrast under such conditions. It provides flat spectral response for an accurate color balance in dark room environments as well for reference quality applications. **The CineGrey 3D®** is ready for the next-generation of high-performance video.



On axis 0° Gain: 1.2
Viewing Cone: 45°



**Elite Screens Series:
SableFrame, Aeon EDGE FREE® Fixed Frame**

- Gain: 1.2; Viewing Angle: 90° (45° L/R)
- ISF Certified for accurate color points, color temperature and dynamic range
- Angular-Reflective front projection material with ambient light rejecting technology
- Contrast enhancement over standard matte white surface
- 4K Ultra HD, Active 3D, and HDR Ready
- Polarized for Passive 3D applications
- Capable of improving brightness, color, and contrast under ambient light conditions
- Mildew resistant, screen surface can be cleaned with a microfiber cloth and water
- Accurate color representation – Flat Spectral Response