

4 Select your country/region (Initial setup only)

After turning the machine on, you will be required to set your country/region. Select your country/region, then the LCD shows the initial language.

5 Select your language (if needed)

1. Press **Menu**, **0**, **0**.
2. Press **▲** or **▼** to select your language, and then press **OK**.
3. Press **Stop/Exit**.

6 Select a device to connect to your machine

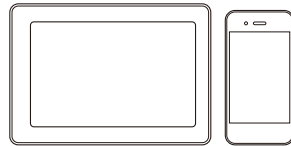
Computer



Go to **7** and follow the instructions.

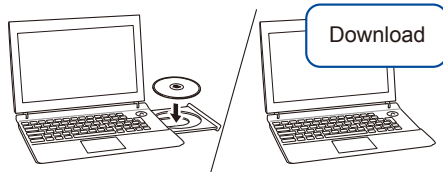
NOTE:
We recommend configuring wireless settings from your computer.

Mobile Device



Go to **8** and follow the instructions.

7 Connect your computer



Put the installation disc into your CD/DVD drive, or download the Full Driver & Software Package including Mac and XPS at:

<http://www.ricoh.com/support/>

If you are using a recently released operating system on your computer, visit the above websites for updated driver and software information.

RICOH regularly updates firmware to add features and apply bug fixes. To check for the latest firmware, visit <http://www.ricoh.com/support/>.

▶ Follow the on-screen instructions and prompts.

▶ Finished

For Windows®:

If the screen does not appear automatically, go to **Computer (This PC)**. Double-click the CD/DVD-ROM icon, and then double-click **start.exe**.

For Mac:

For full driver functionality, we recommend choosing the **CUPS driver** when adding a printer.

Can't Connect? Check the following:

Wireless network

▶ Restart your wireless access point/router (if possible).

Wired network

USB connection

▶ Disconnect the cable.

▶ Restart your machine and computer, and then go to **7**.

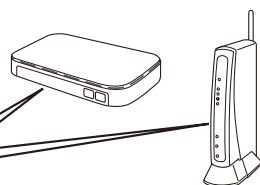
▶ If still not successful, go to **8**.

8 Alternative wireless setup

Find your SSID (Network Name) and Network Key (Password) on your wireless access point/router and write them in the table provided below.

SSID (Network Name)	
Network Key (Password)	

SSID: XXXXXXXX
Network key: XXXX



▶ To select each menu option, press **▲** or **▼**, and then press **OK** to confirm. Select [Network] > [WLAN] > [Setup Wizard], and then press **▲**.

▶ Select the SSID (Network Name) for your access point/router and enter the Network Key (Password).

▶ When the wireless setup is successful, the LCD displays [Connected].

▶ If setup is not successful, restart your machine and your wireless access point/router, and repeat **8**.

▶ For Computer

Go to **7** to install software.

▶ For Mobile Device

Print using the mobile print service. For more information, see the User's Guide.

If you cannot find this information, ask your network administrator or wireless access point/router manufacturer.