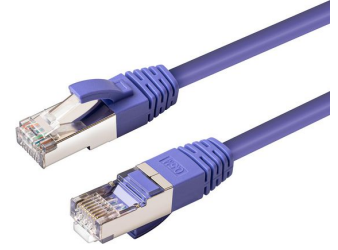


MPN: MC-SFTP6A075P

## CAT6A S/FTP 7.5m Purple LSZH

The MicroConnect CAT6a Patch Cable is ideal for use in demanding environments where 10Gbit and bandwidth up to 500Mhz is required. There are 50u ´ RJ45 connectors to provide a better connection, latch protection to protect the clip from breaking and meter marking on the boot to easy identify the length of the cable.

- Fluke CAT6A Channel Link Pass
- PoE+ ready
- LSZH – Low Smoke Zero Halogen
- Snagless hood
- Length marking on boot



## Specifications

|                       |  |   |
|-----------------------|--|---|
| <b>Features</b>       | <b>AWG wire size</b>                               | 26/7  |
|                       | <b>Cable length</b>                                | 7.5 m                                       |
|                       | <b>Cable shape</b>                                 | Round                                       |
|                       | <b>Cable shielding</b>                             | S/FTP (S-STP)                               |
|                       | <b>Cable standard</b>                              | Cat6a                                       |
|                       | <b>Certification</b>                               | RoHS, CE                                    |
|                       | <b>Conductor material</b>                          | Copper                                      |
|                       | <b>Conductor type</b>                              | Stranded                                    |
|                       | <b>Connector 1</b>                                 | RJ45  |
|                       | <b>Connector 1 gender</b>                          | Male  |
|                       | <b>Connector 2</b>                                 | RJ45  |
|                       | <b>Connector 2 gender</b>                          | Male  |
|                       | <b>Connector contacts plating</b>                  | Gold  |
|                       | <b>Connector shielding</b>                         | Yes   |
|                       | <b>Data transfer rate</b>                          | 10000 Mbit/s                                |
|                       | <b>Frequency</b>                                   | 500 MHz                                     |
|                       | <b>Halogen-free</b>                                | Yes   |
|                       | <b>Jacket material</b>                             | Low smoke zero halogen (LSZH)               |
|                       | <b>Molded cable boot</b>                           | Yes   |
|                       | <b>Plug and Play</b>                               | Yes   |
|                       | <b>Power over Ethernet (PoE)</b>                   | Yes   |
|                       | <b>Product colour</b>                              | Purple                                      |
|                       | <b>RoHS compliance</b>                             | Yes   |
|                       | <b>Snagless cable boot</b>                         | Yes   |
| <b>Logistics data</b> | <b>Export Control Classification Number (ECCN)</b> | EAR99                                       |
| <b>Other features</b> | <b>Technical features</b>                          | Kink Protection, strain relief and Snagless |

|                           |                                   |              |
|---------------------------|-----------------------------------|--------------|
| <b>Package dimensions</b> | <b>Depth (package,cm)</b>         | 20.9 cm      |
|                           | <b>Gross Weight (Package, kg)</b> | 0.236 kg     |
|                           | <b>Height (package,cm)</b>        | 4.2 cm       |
|                           | <b>Width (package,cm)</b>         | 26.5 cm      |
| <b>Product dimensions</b> | <b>Net Weight (Product, kg)</b>   | 0.2 kg       |
|                           | <b>Product Depth</b>              | 130 cm       |
| <b>Vendor information</b> | <b>Brand Name</b>                 | MicroConnect |
|                           | <b>Warranty</b>                   | 25 Year(s)   |

## Other products in this series

| Cable length | Black          | Blue           | Green          | Grey          |
|--------------|----------------|----------------|----------------|---------------|
| 0.25         | MC-SFTP6A0025S | MC-SFTP6A0025B | MC-SFTP6A0025G | MC-SFTP6A0025 |
| 0.3          |                |                |                | MC-SFTP6A003  |
| 0.5          | MC-SFTP6A005S  | MC-SFTP6A005B  | MC-SFTP6A005G  | MC-SFTP6A005  |
| 1.0          | MC-SFTP6A01S   | MC-SFTP6A01B   | MC-SFTP6A01G   | MC-SFTP6A01   |
| 1.5          | MC-SFTP6A015S  | MC-SFTP6A015B  | MC-SFTP6A015G  | MC-SFTP6A015  |
| 2.0          | MC-SFTP6A02S   | MC-SFTP6A02B   | MC-SFTP6A02G   | MC-SFTP6A02-A |
| 3.0          | MC-SFTP6A03S   | MC-SFTP6A03B   | MC-SFTP6A03G   | MC-SFTP6A03   |
| 4.0          |                |                |                |               |
| 5.0          | MC-SFTP6A05S   | MC-SFTP6A05B   | MC-SFTP6A05G   | MC-SFTP6A05   |
| 6.0          |                |                |                |               |
| 7.5          | MC-SFTP6A075S  | MC-SFTP6A075B  | MC-SFTP6A075G  | MC-SFTP6A075  |
| 8.0          |                |                |                |               |
| 10.0         | MC-SFTP6A10S   | MC-SFTP6A10B   | MC-SFTP6A10G   | MC-SFTP6A10   |
| 15.0         | MC-SFTP6A15S   | MC-SFTP6A15B   | MC-SFTP6A15G   | MC-SFTP6A15   |
| 20.0         | MC-SFTP6A20S   | MC-SFTP6A20B   | MC-SFTP6A20G   | MC-SFTP6A20   |
| 25.0         |                |                |                | MC-SFTP6A25   |
| 30.0         |                |                |                | MC-SFTP6A30   |

| Cable length | Orange         | Purple         | Red            | Transparent    |
|--------------|----------------|----------------|----------------|----------------|
| 0.25         | MC-SFTP6A0025O | MC-SFTP6A0025P | MC-SFTP6A0025R | MC-SFTP6A0025T |
| 0.3          |                |                |                |                |
| 0.5          | MC-SFTP6A005O  | MC-SFTP6A005P  | MC-SFTP6A005R  |                |
| 1.0          | MC-SFTP6A01O   | MC-SFTP6A01P   | MC-SFTP6A01R   |                |
| 1.5          | MC-SFTP6A015O  | MC-SFTP6A015P  | MC-SFTP6A015R  |                |
| 2.0          | MC-SFTP6A02O   | MC-SFTP6A02P   | MC-SFTP6A02R   |                |
| 3.0          | MC-SFTP6A03O   | MC-SFTP6A03P   | MC-SFTP6A03R   |                |
| 4.0          |                |                |                |                |
| 5.0          | MC-SFTP6A05O   | MC-SFTP6A05P   | MC-SFTP6A05R   |                |
| 6.0          |                |                |                |                |
| 7.5          | MC-SFTP6A075O  | MC-SFTP6A075P  | MC-SFTP6A075R  |                |
| 8.0          |                |                |                |                |
| 10.0         | MC-SFTP6A10O   | MC-SFTP6A10P   | MC-SFTP6A10R   |                |
| 15.0         | MC-SFTP6A15O   | MC-SFTP6A15P   | MC-SFTP6A15R   |                |
| 20.0         | MC-SFTP6A20O   | MC-SFTP6A20P   | MC-SFTP6A20R   |                |
| 25.0         |                |                |                |                |

| Cable length | Orange       | Purple       | Red | Transparent |
|--------------|--------------|--------------|-----|-------------|
| 30.0         | MC-SFTP6A30O | MC-SFTP6A30P |     |             |

| Cable length | White          | Yellow         |
|--------------|----------------|----------------|
| 0.25         | MC-SFTP6A0025W | MC-SFTP6A0025Y |
| 0.3          |                |                |
| 0.5          | MC-SFTP6A005W  | MC-SFTP6A005Y  |
| 1.0          | MC-SFTP6A01W   | MC-SFTP6A01Y   |
| 1.5          | MC-SFTP6A015W  | MC-SFTP6A015Y  |
| 2.0          | MC-SFTP6A02W   | MC-SFTP6A02Y   |
| 3.0          | MC-SFTP6A03W   | MC-SFTP6A03Y   |
| 4.0          | MC-SFTP6A04W   |                |
| 5.0          | MC-SFTP6A05W   | MC-SFTP6A05Y   |
| 6.0          | MC-SFTP6A06    |                |
| 7.5          | MC-SFTP6A075W  | MC-SFTP6A075Y  |
| 8.0          | MC-SFTP6A08W   |                |
| 10.0         | MC-SFTP6A10W   | MC-SFTP6A10Y   |
| 15.0         | MC-SFTP6A15W   | MC-SFTP6A15Y   |
| 20.0         | MC-SFTP6A20W   | MC-SFTP6A20Y   |
| 25.0         |                |                |
| 30.0         |                |                |

## Other images

