



Philips
Wireless TV headphones

40-mm drivers/open-back

Over-ear
Breathable ear cushions

SHD8850



High-res home cinema sound

Superior cinematic sound for your home

Philips SHD8850 wireless headphones immerse you in your own world of cinematic sound, with total freedom. Digital wireless connectivity provides interference-free, crystal-clear sound, for the ultimate in personal home entertainment.

Superior listening experience

- Superior cinematic sound from 40 mm drivers
- High-res audio via wired connection

Ease of use

- 20-hour runtime for long listening sessions
- Move freely with 30 m wireless range
- Automatic on/off power
- Easy-to-use charging dock
- Optical and analogue input fits all televisions

Designed for long-wearing comfort

- Hammock auto-adjusts for optimal fit
- Breathable velour ear cushions for extensive comfort

PHILIPS

Wireless TV headphones
40-mm drivers/open-back Over-ear, Breathable ear cushions

SHD8850/12

Highlights

20-hour runtime

With a 20-hour runtime, you can indulge in marathon viewing sessions without worrying about losing power.

30 m wireless range

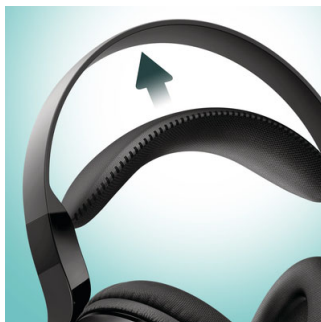


The 30 m transmission range provides mobility and freedom to enjoy your music all around your home.

Auto on/off

Philips SHD8850 headphones turn on automatically when you put them on your head. And when you've finished watching, they will automatically power off, to ensure power doesn't go to waste.

Auto-adjustable fit



The self-adjusting lightweight hammock gives you the best fit for your head shape, while offering optimal comfort.

Cinematic sound



Philips SHD8850 40 mm drivers are acoustically tuned to deliver superior cinematic sound.

Easy charging



Place the headphones in the charging dock for easy charging.

Fits all televisions

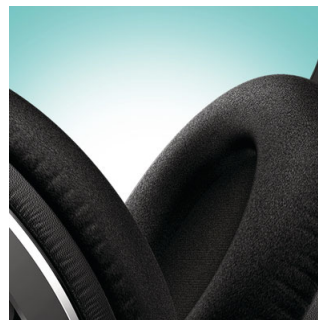
Equipped with an optical and analogue input, Philips SHD8850 headphones are compatible.

Hi-res audio



High-resolution audio offers the best in sound performance, reproducing the quality of original studio master recordings more faithfully than 16 bit/44.1 kHz CD formats. Using the audio cable provided, Philips SHD8850 wireless headphones support high-resolution audio, delivering uncompromising audio quality from your preferred devices — so you can get more out of your home entertainment.

Velour ear cushions



Breathable velour ear cushions dissipate pressure and heat, ensuring extensive comfort for long wearing sessions.

Specifications

Sound

- Acoustic system: Open
- Magnet type: Neodymium
- Speaker diameter: 40 mm
- Signal/noise ratio: >75 dB
- Impedance: 24 Ohm
- Frequency range: 8–40,000 Hz (when wired); 8–22,500 (wireless mode)

Tuner/Reception/Transmission

- Modulation: FHSS
- Effective range: 30 m
- Channel selection: automatic
- Channel separation: >40 dB
- Number of channels: 15

Convenience

- Automatic power off
- Battery low indication
- Operating time: ~20 hours
- Battery charging indicator
- Base station features: LED indicator

Accessories

- AC/DC Adapter: 5 V/550 mA DC
- Included accessories: Optical cable

Power

- Power supply headphone: 2 x AAA 1.2 V NiMH

- rechargeable battery
- Power supply transmitter: 5 V 550 mA DC

Product dimensions

- Product dimensions (W x H x D): 17.6 x 22 x 9.5 cm
- Weight: 0.239 kg

Packaging dimensions

- Packaging dimensions (W x H x D): 24 x 32 x 12.5 cm
- Net weight: 0.616 kg
- Gross weight: 0.998 kg
- Tare weight: 0.382 kg
- EAN: 69 25970 71235 4
- Type of shelf placement: Both
- Number of products included: 1
- Packaging type: Carton

Outer Carton

- Outer carton (L x W x H): 39.5 x 26 x 32.5 cm
- Gross weight: 3.578 kg
- Tare weight: 1.73 kg
- GTIN: 1 69 25970 71235 1
- Number of consumer packages: 3
- Net weight: 1.848 kg

Connectivity

- 3.5 mm headphone jack
- Input connections: Digital optical line in



Issue date 2019-07-01

Version: 4.0.5

12 NC: 8670 001 42592
EAN: 69 51613 99240 1

© 2019 Koninklijke Philips N.V.
All Rights reserved.

Specifications are subject to change without notice.
Trademarks are the property of Koninklijke Philips N.V.
or their respective owners.

www.philips.com