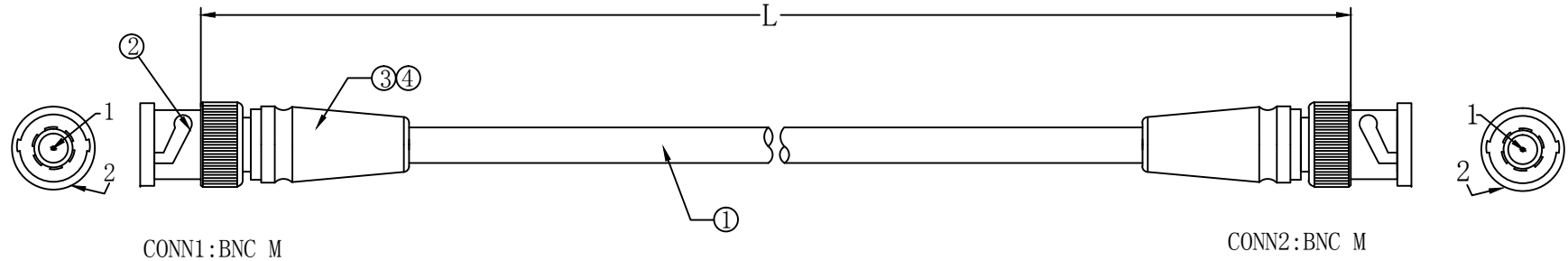


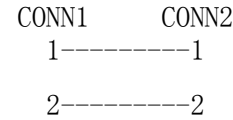
REV.	Q' TY	REVISED DESCRIPTION	DATE	CHECKED



1. WIRING DIAGRAM

2. Electrical test conditions:

- A. voltage: DC 300V
- B. Insulation impedance: 10M Ω
- C. Conduction impedance: 5 Ω



4K60Hz

L	20000 ± 100MM
	10000 ± 80MM
	5000 ± 40MM
	3000 ± 40MM
	2000 ± 30MM
	1000 ± 30MM

6	CARTON	49*32*33.5cm		
5	BAG	PE bag A single packing		
4	TIE	L=200MM black		
3	EXTERNAL MOLD	45P PVC color:black		
2	CONN	BNC White glue core Nickel plating		
1	CABLE	SDI 12G 1C*16#+AB OD:7.8 COLOR: BLACK		
ITEM	DESCRIPTION	SPECIFICATION	Q' TY	UNIT

					SYMBOL
▲	X	MAJOR DIMENSION	UNIRISE P/N:	REVISION	SO
ALL DIMENSIONS ARE "mm". METRIC ANGLES 1/2 DEG. .XXX ± .03 .XX ± .05 .X ± .1			CUSTOMER	UNIT	mm
FILE NO:			CUSTOMER P/N:	SCALE	
			DESCRIPTION	SDI 12G CABLE	PAGE NO 1/1
			APPROVED	Emil Olsen	CHECKED
			Lai	ENGINEER	Xiaowen
			DRAWN		