



* All images are for illustrative purposes only.

OUTDOOR LG LED SIGNAGE

GSCA Versatile Series



Fast Installation



Easy Maintenance



Two Cabinet Options



90° Corner Design Available

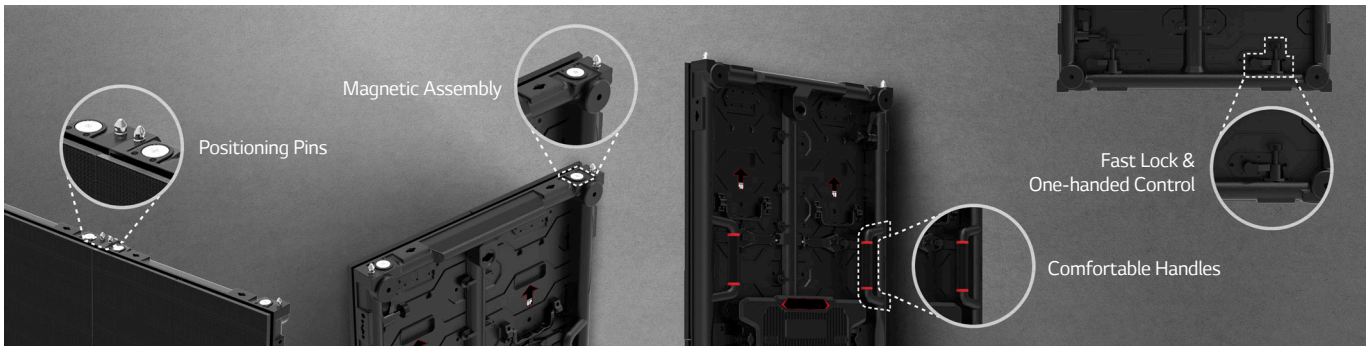


Front or Rear Serviceability



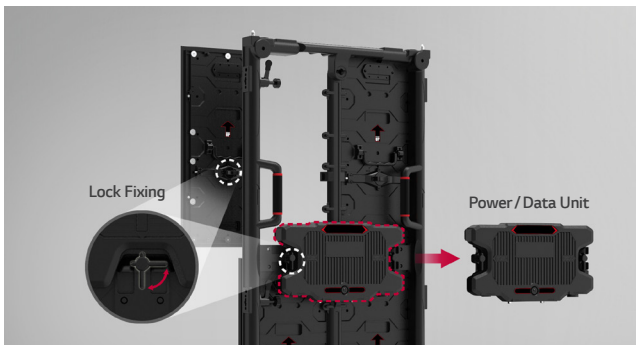
IP Rated Weatherproof Design

IP65



Fast Installation

Various factors including magnets on the top and bottom, positioning pins, handles and fast locks help installers easily set up and dismantle the LED screens without additional tools.



Easy Maintenance

The GSCA series uses a simple Lock Fixing method which requires no additional tools, making it easier to replace LED modules or power/data units. This saves time and complexity for maintenance.



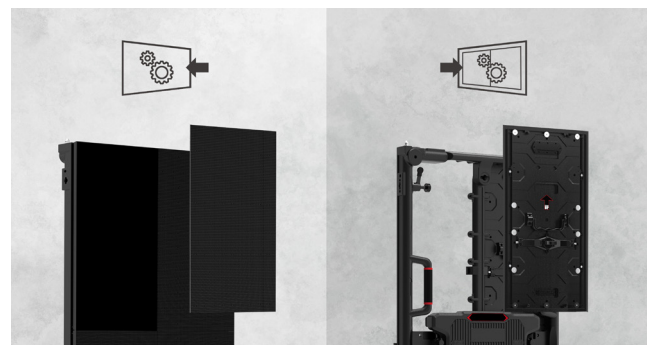
Two Cabinet Options

The GSCA series offers two sizes of cabinets enabling a screen size configuration that fits perfectly with customer's demands.



IP Rated Weatherproof & 90° Corner Design

The cabinet is IP65 certified, allowing stable operation unaffected by weather and harsh outdoor environments. Also, if you add a 90° corner option, the GSCA series can deliver virtually seamless content even when installed on the corners.



Front or Rear Serviceability

The product offers either front access or rear access, allowing customers to choose installation options according to their environment and minimizes limitations in installation and maintenance.

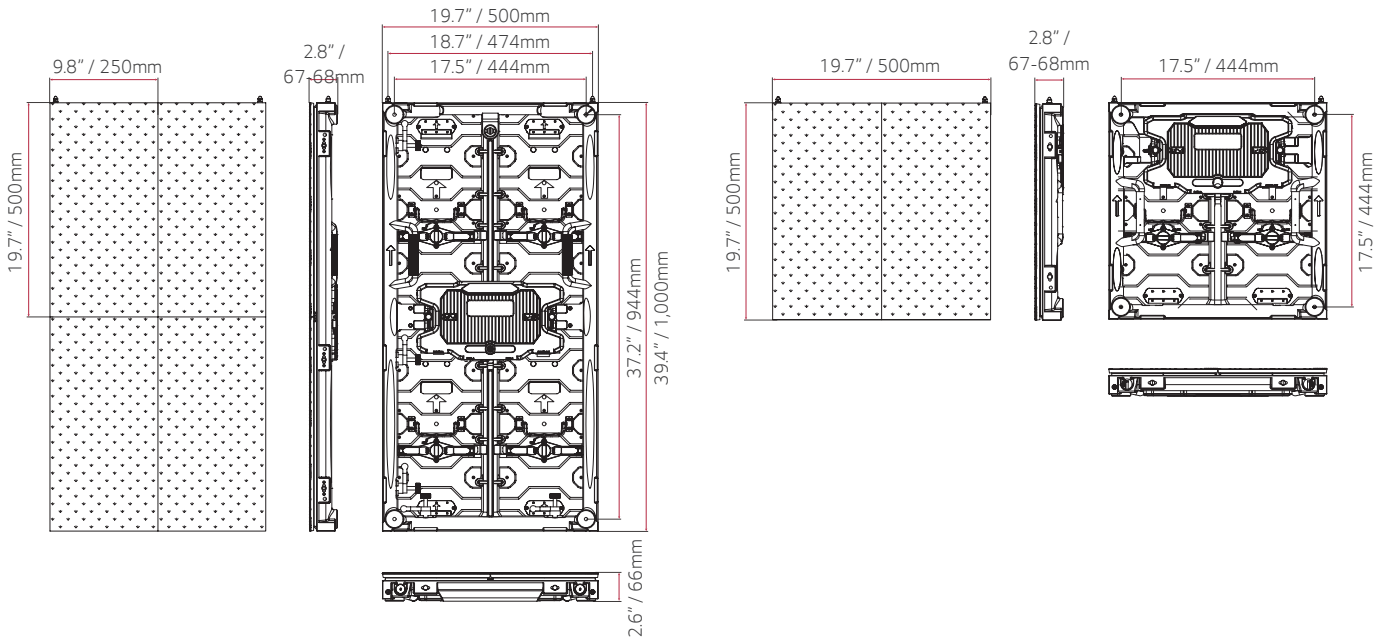
PRODUCT INFORMATION



GSCA Series

Pixel Pitch	3.91 / 4.63 mm
Brightness	5,000 nits
Refresh Rate	3,840 Hz
Serviceability	Front or Rear (One Option Only)
IP Rating	IP65

DIMENSIONS



		GSCA039-GN	GSCA039-GN2	GSCA046-GN	GSCA046-GN2
PHYSICAL PARAMETERS	Pixel Configuration	3 in 1 SMD	3 in 1 SMD	3 in 1 SMD	3 in 1 SMD
	Pixel Pitch	3.91 mm	3.91 mm	4.63 mm	4.63 mm
	Module Resolution (W x H)	64 x 128	64 x 128	54 x 108	54 x 108
	Module Dimensions (W x H)	9.8 x 19.7 in / 250 x 500 mm	9.8 x 19.7 in / 250 x 500 mm	9.8 x 19.7 in / 250 x 500 mm	9.8 x 19.7 in / 250 x 500 mm
	Weight per Module	3.1 lbs / 1.4 kg	3.1 lbs / 1.4 kg	3.1 lbs / 1.4 kg	3.1 lbs / 1.4 kg
	LED Package Manufacturer	Nationstar	Nationstar	Nationstar	Nationstar
	No. of Modules per Unit Case (W x H)	2 x 2	2 x 1	2 x 2	2 x 1
	Unit Case Resolution (W x H, pixels)	128 x 256	128 x 128	108 x 216	108 x 108
	Unit Case Dimensions (W x H x D)	19.7 x 39.4 x 2.6 in 500 x 1000 x 66.05 mm	19.7 x 19.7 x 2.6 in 500 x 500 x 66.05 mm	19.7 x 39.4 x 2.6 in 500 x 1000 x 67.2 mm	19.7 x 19.7 x 2.6 in 500 x 500 x 67.2 mm
	Unit Case Surface Area	5.38 ft ² / 0.5 m ²	2.7 ft ² / 0.25 m ²	5.38 ft ² / 0.5 m ²	2.7 ft ² / 0.25 m ²
	Weight per Unit Case	27.6 lbs / 12.46 kg	17.4 lbs / 7.93 kg	28.0 lbs / 12.7 kg	17.9 lbs / 8.05 kg
	Weight per Square Meter	5.1 lb/ft ² / 24.92 kg/m ²	6.5 lb/ft ² / 31.72 kg/m ²	5.2 lb/ft ² / 25.4 kg/m ²	6.6 lb/ft ² / 32.2 kg/m ²
	Physical Pixel Density (pixels/M ²)	6,091 pixels/ft ² 65,536 pixels/m ²	6,091 pixels/ft ² 65,536 pixels/m ²	6,091 pixels/ft ² 65,536 pixels/m ²	6,091 pixels/ft ² 65,536 pixels/m ²
	Flatness of Unit Case (mm)	±0.3	±0.3	±0.3	±0.3
	Unit Case material	Die-cast Magnesium	Die-cast Magnesium	Die-cast Magnesium	Die-cast Magnesium
	Service access	Front or Rear (select one only)	Front or Rear (select one only)	Front or Rear (select one only)	Front or Rear (select one only)
OPTICAL SPECIFICATIONS	Min. Brightness (After Calibration)	5,000 nits	5,000 nits	5,000 nits	5,000 nits
	Color Temperature	3,500 to 9,000 K	3,500 to 9,000 K	3,500 to 9,000 K	3,500 to 9,000 K
	Visual Viewing Angle (Horizontal)	160°	160°	160°	160°
	Visual Viewing Angle (Vertical)	155°	155°	135°	135°
	Brightness Uniformity	97%	97%	97%	97%
	Color Uniformity	±0.003CxCy	±0.003CxCy	±0.003CxCy	±0.003CxCy
	Contrast Ratio	6,000	6,000	11,000	11,000
	Processing Depth	14 bit	14 bit	14 bit	14 bit
ELECTRICAL SPECIFICATIONS	Max Power Consumption per Unit	300 W	150 W	300 W	150 W
	Average Power Consumption per Unit	100 W	50 W	100 W	50 W
	Max Power Consumption per Unit Area	600 W/m ²	600 W/m ²	600 W/m ²	600 W/m ²
	Max Power Consumption per Unit	1024 BTU	512 BTU	1024 BTU	512 BTU
	Average Power Consumption per Unit	341 BTU	171 BTU	341 BTU	171 BTU
	Max Power Consumption per Unit Area	2,047 BTU/m ²	2,047 BTU/m ²	2,047 BTU/m ²	2,047 BTU/m ²
	Power Supply	100 to 240 Vac	100 to 240 Vac	100 to 240 Vac	100 to 240 Vac
	Frame Rate	50 / 60 Hz	50 / 60 Hz	50 / 60 Hz	50 / 60 Hz
	Refresh Rate	3843 Hz	3844 Hz	3845 Hz	3846 Hz
OPERATION SPECIFICATIONS	LED Lifetime (Half brightness)	100,000 hrs	100,000 hrs	100,000 hrs	100,000 hrs
	Operating Temperature	-4°F to 113°F / -20°C to +45°C	-4°F to 113°F / -20°C to +45°C	-4°F to 113°F / -20°C to +45°C	-4°F to 113°F / -20°C to +45°C
	Operating Humidity	10-99%RH	10-99%RH	10-99%RH	10-99%RH
	IP rating Front	IP65	IP65	IP65	IP65
	IP rating Rear	IP65	IP65	IP65	IP65
CERTIFICATIONS	FCC (Regulatory)	Yes	Yes	Yes	Yes
	CE (Regulatory)	Yes	Yes	Yes	Yes
	ETL (Safety)	Yes	Yes	Yes	Yes
	RoHS (Environmental)	Yes	Yes	Yes	Yes
CONTROLLER	LCIN006	LCIN006	LCIN006	LCIN006	
90 DEGREE CORNER CUT	Yes	Yes	Yes	Yes	