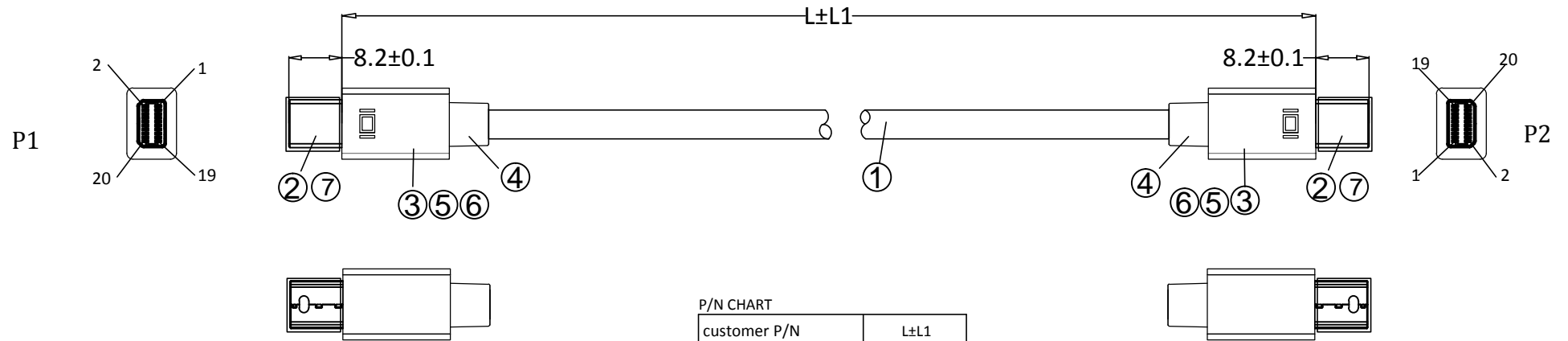


RoHS compliant

REV	MODIFICATION	DATE
A	ISSUE	2018.09.19

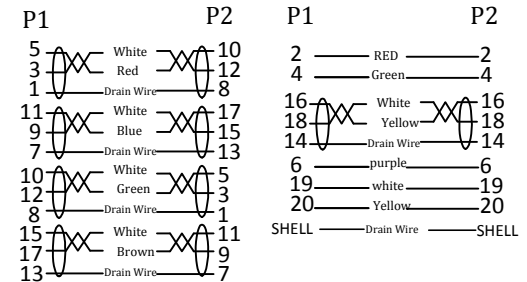


customer P/N	L±L1
MDPMDP050BV1.4	500±30
MDPMDP1BV1.4	1000±30
MDPMDP2BV1.4	2000±50

Electronic Tests:

- A. Open/Short/Intermittence: 100%
- B.HI-POT: AC 300V 0.01S
- C. Insulation Resistance: DC 300V 0.01S 10MΩ Min
- D. Conductive Resistance: 2 OHM Max
- E.Computer testing:8K*4K @60HZ.

CONNECTION



⑦	DUST CAP	mini DISPLAYPORT MALE LDPE	2	PCS					
⑥	ABS plastic shell	mini DISPLAYPORT 20P ABS plastic shell black	2	PCS					
⑤	COPPER FOIL	COPPER FOIL:L30*W15mm	2	PCS	角法 PROJ:		容忍公差 TOLERANCE:	XX= XXX=	产品名称 PROUCT NAME: MDPMDP*BV1.4
④	OUTER MOLDED	45P BLACK PVC	4	G	比例 SCALE:	NONE	版本 REV:	A	产品料号 PART NO:
③	INNER MOLDED	LDPE	3	G	单位 UNIT:	MM	页次 SHEET:	1/1	客户 CUST:
②	CONNECTOR	MINI DISPLAYPORT 20P Male soldering WHITE INSULATION,THE PIN GOLD PLATED AND SHELL GOLD PLATED	2	PCS	客户回签 SUST APPROVED:				
①	CABLE	DP1.4V[1P*32#(7/0.08TC)+D(7/0.08TC)+AL/MYLAR]*5C+5C*32#(7/0.08TC)+AL+D(1/0.254BC)+B(80/0.12AL-MG)BLACK PVC JACKET OD:4.8±0.2MM MARKING: DisplayPort Cable E***** 兄 AWM STYLE 20276 80℃ 30V VW-1	A/R	MM	核准 APPROVED:				
NO	NAME	SPECIFICATIONS	Q'TY	UNIT	制图 DRAWING:				